

Test bank - lipids - part 2

By Hind Shaker Suhwail - Modified by Dana Hijeh



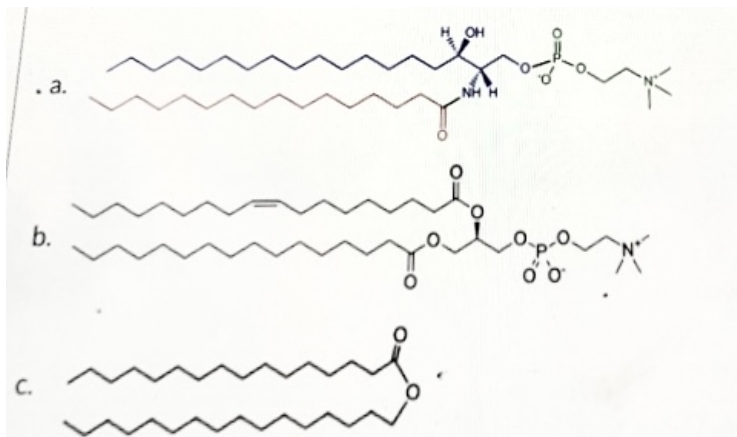
يارب كما هونتها على سيدنا يونس هونها عليهم

Q1. Liposomes are often used for drug delivery because they:

- A. Increase the solubility of hydrophobic drugs
- B. Allow for targeted delivery
- C. Non of the above
- D. All of the above

Q2. which structure illustrates sphingolipids

- A. a
- B. b
- C. c
- D. Non of the above

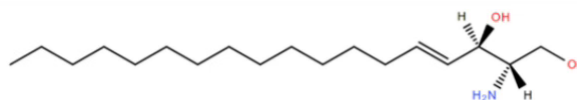


Q3. Which membrane lipid contains an amide bond?

- A. cholesterol
- B. phosphatidylserine
- C. phosphatidic acid
- D. sphingomyelin

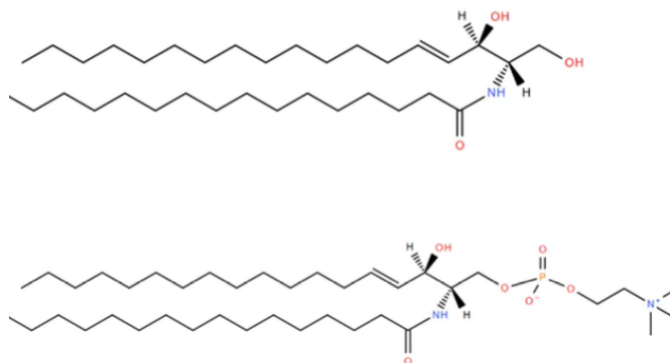
Q4. What is the group attached to C1 in sphingomyelin?

- A. Phosphocholine
- B. Galactose
- C. Glucose
- D. Ceramide



Q5. Which of the following shows sphingomyeline ?

- A. a
- B. b
- C. c
- D. Non of the above



Q6. In multiple sclerosis (MS), damage to which component of the nerve cells is primarily implicated?

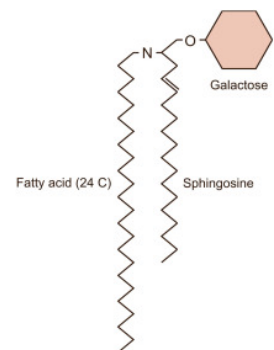
- A. Glycosphingolipids
- B. Phosphatidylcholine
- C. Sphingomyelin
- D. Ceramide

Q7. Globosides are characterized by:

- A. A ceramide backbone with a single sugar unit
- B. A ceramide backbone with multiple sugars but without sialic acid
- C. A complex oligosaccharide chain with sialic acid
- D. A glycerol backbone and phosphate group

Q8. The following structure shows ..?

- A. Cerebrosides
- B. Globosides
- C. Gangliosides
- D. Ceramide

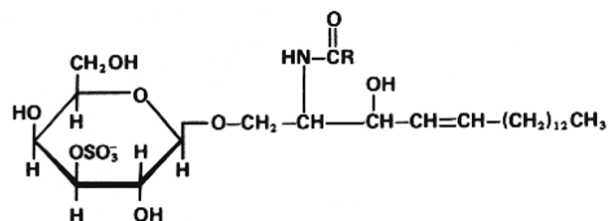


Q9. In the context of glycolipids, which of the following statements is true?

- A. Globosides contain only glucose and galactose.
- B. Cerebrosides are complex glycolipids with multiple oligosaccharide chains.
- C. Gangliosides are bound by cholera toxin, which facilitates their endocytosis into cells.
- D. Globosides do not contain N-acetylgalactosamine.

Q10. The following structure illustrates ..?

- A. Globoside
- B. Ganglioside
- C. Sphingomyelin
- D. Sulfatide



Q11. Which lipoprotein is primarily responsible for transporting cholesterol from the liver to peripheral tissues?

- A. Chylomicrons
- B. Very-low-density lipoproteins (VLDL)
- C. Low-density lipoproteins (LDL)

D. High-density lipoproteins(HDL)

Q12. lipoprotein increases, what happens to its density?

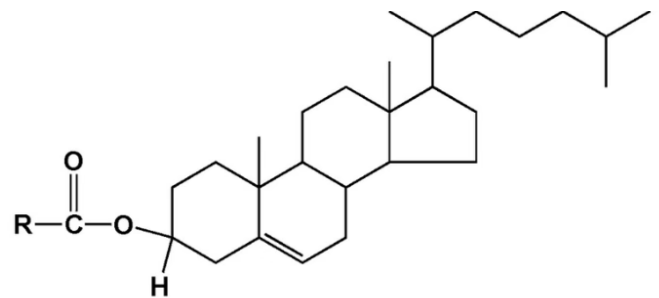
- A. Increases
- B. Decreases
- C. Remains the same
- D. increase slightly then decrease

Q13.Which of the following best describes the relationship between cholesterol and bile acids?

- A. Cholesterol is converted into bile acids in the kidneys.
- B. Bile acids are synthesized from cholesterol and aid in the digestion of proteins.
- C. Cholesterol is converted into bile acids, which facilitate the intestinal absorption of fats.
- D. Bile acids convert cholesterol into hormones.

Q14. The following structure shows ..?

- A. Estrogen
- B. Isoprene
- C. Androgen
- D. Cholesterol ester



Q15.Which of the following phospholipids is predominantly found in the outer leaflet of the plasma membrane?

- A. Phosphatidylserine
- B. Phosphatidylethanolamine
- C. Phosphatidylcholine
- D. Phosphatidylinositol

Q16.Which of the following statements about membrane proteins is true?

- A. Peripheral proteins penetrate the hydrophobic core of the lipid bilayer.
- B. Integral membrane proteins can be easily dissociated from the membrane by mild treatments.
- C. Lipid-anchored proteins are covalently attached to a lipid molecule that is inserted into the membrane.
- D. All membrane proteins are covalently bonded to the membrane

Answers key

1. D
2. A
3. D
4. A
5. C
6. C
7. B
8. A
9. C
10. D
11. C
12. B
13. C
14. D
15. C
16. C



اللهم يا من لا يهزم جنده ولا يخلف وعده، ولا إله غيره،
كن لأهل فلسطين عوناً ونصيراً، ومعيناً وظهيراً، اللهم
انصرهم ولا تنصر عليهم اللهم لا ترفع لليهود في القدس
راية، ولا تحقق لهم غاية واجعلهم للناس آية