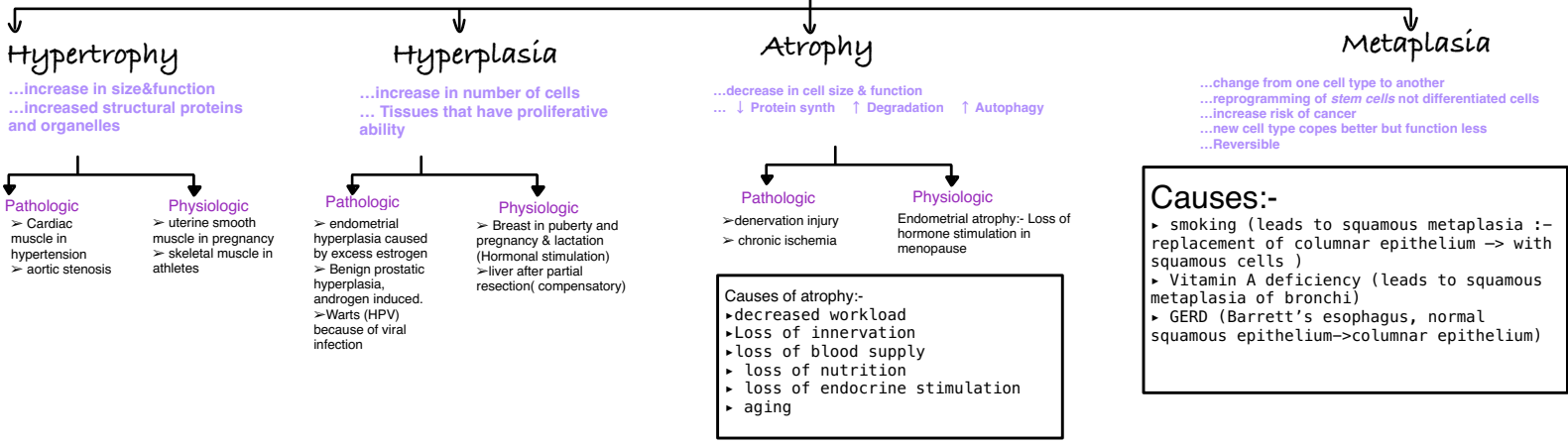


# Adaptations



**Causes:-**

- ▶ smoking (leads to squamous metaplasia :- replacement of columnar epithelium -> with squamous cells )
- ▶ Vitamin A deficiency (leads to squamous metaplasia of bronchi)
- ▶ GERD (Barrett's esophagus, normal squamous epithelium->columnar epithelium)

## Causes of cell injury

