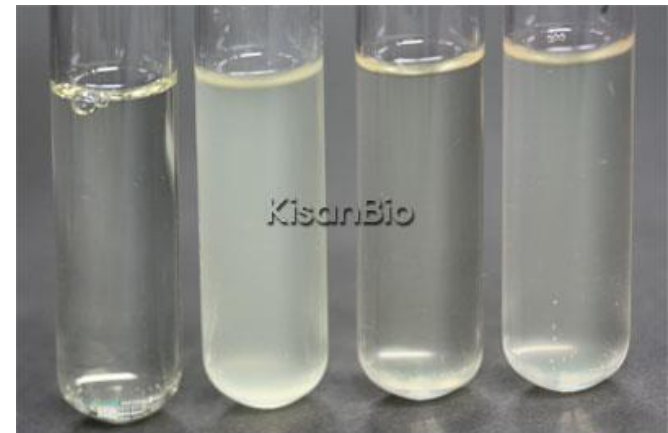
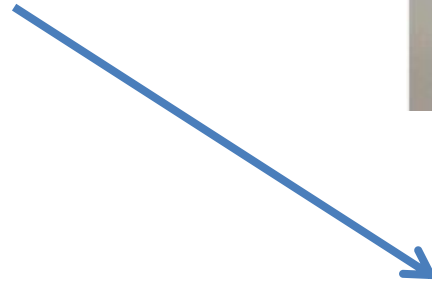
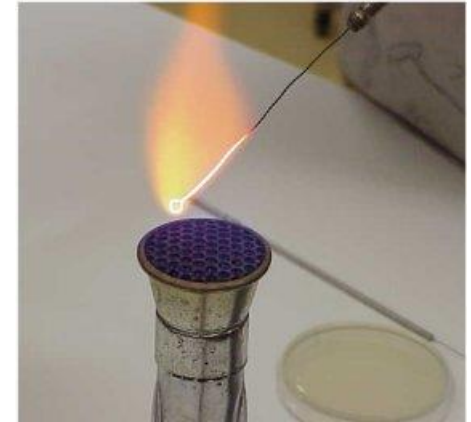
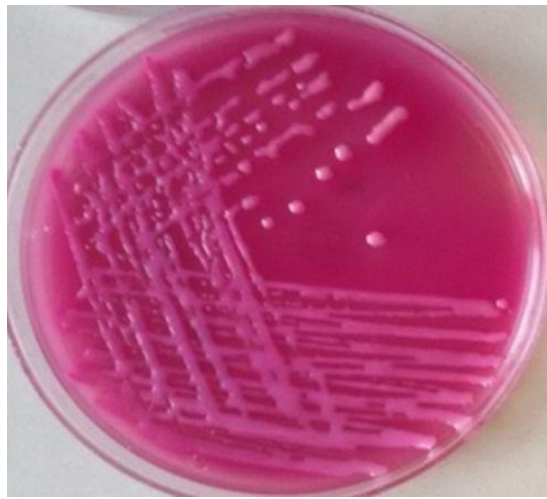
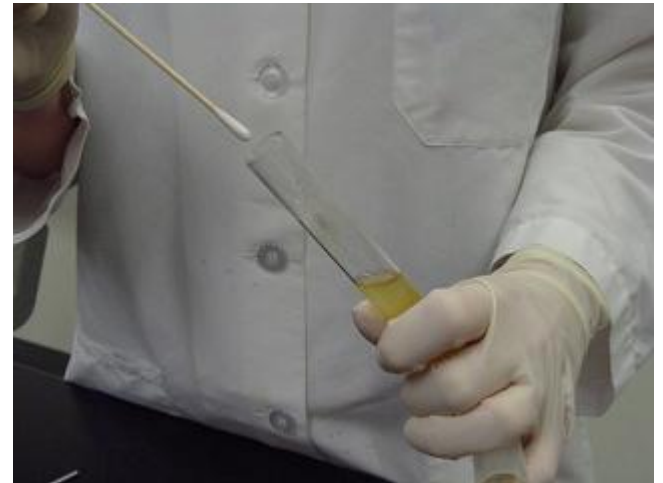
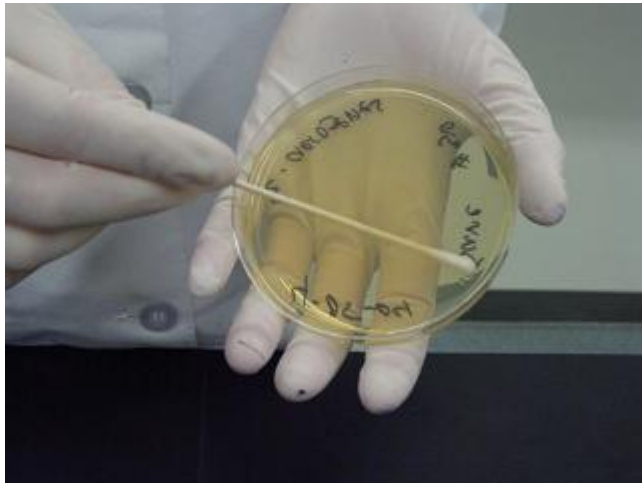


Antibiotic susceptibility test Kirby-Bauer disk diffusion method

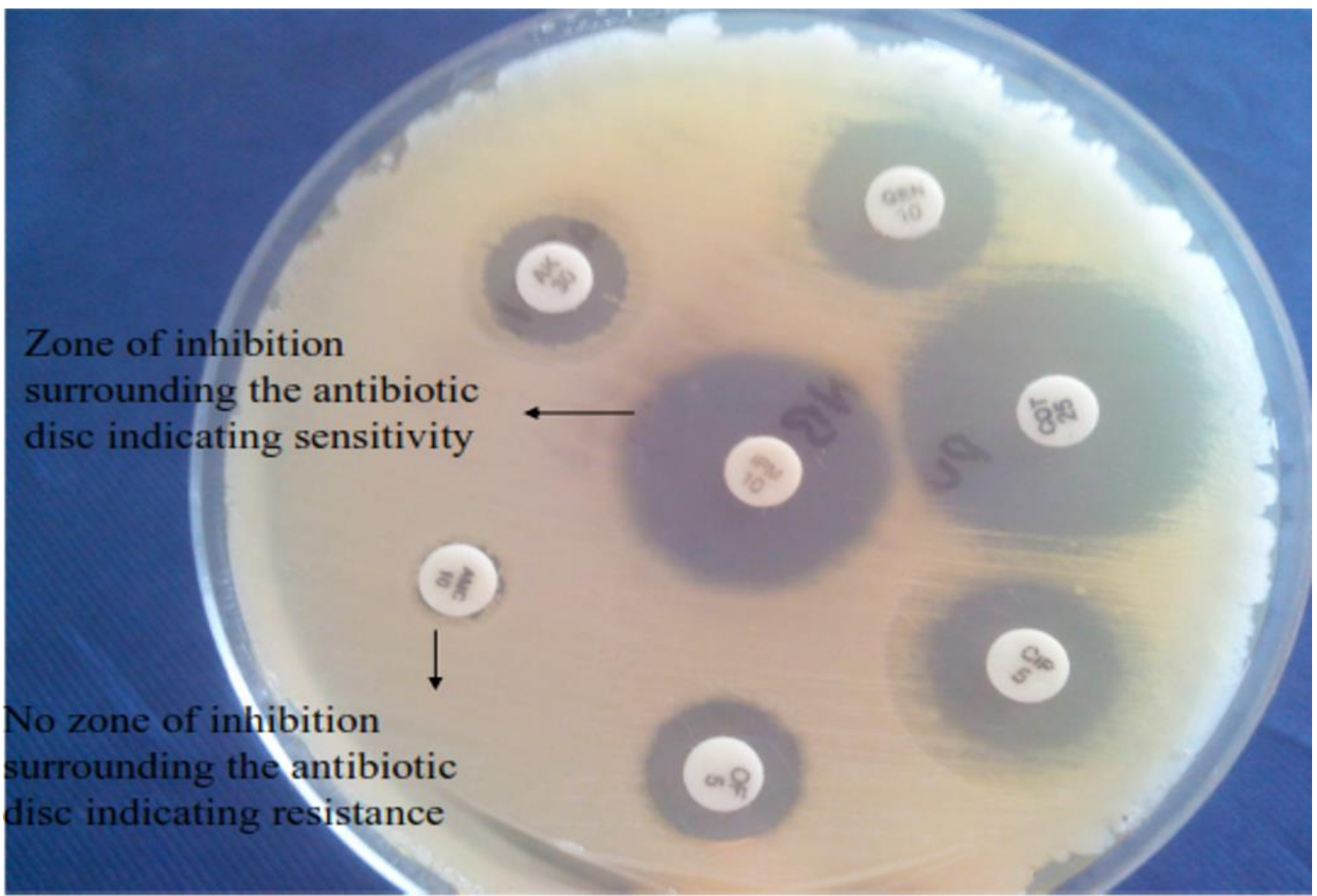


MB-M1034 Mueller Hinton Broth
Uncultivated
/ Cultivated *E.coli* / *Staphylococcus aureus* / *Enterococcus*



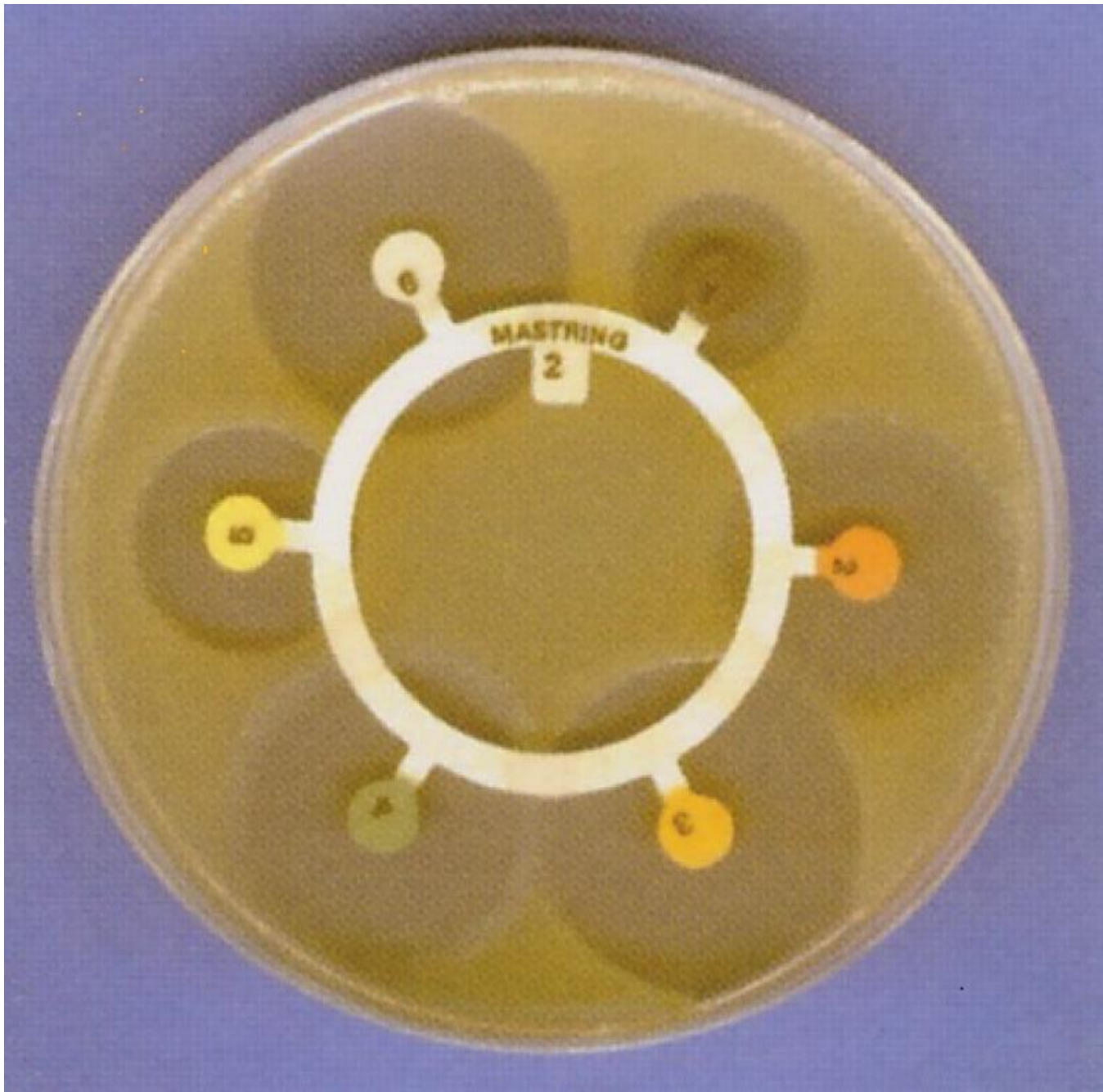


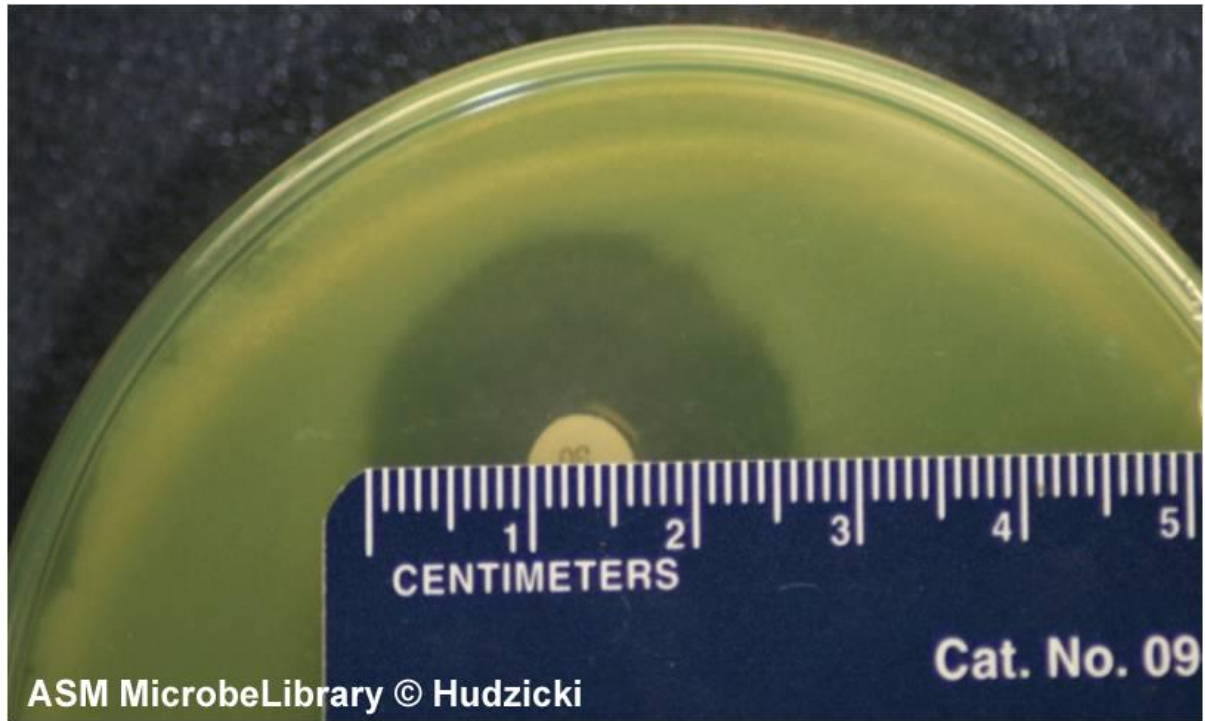
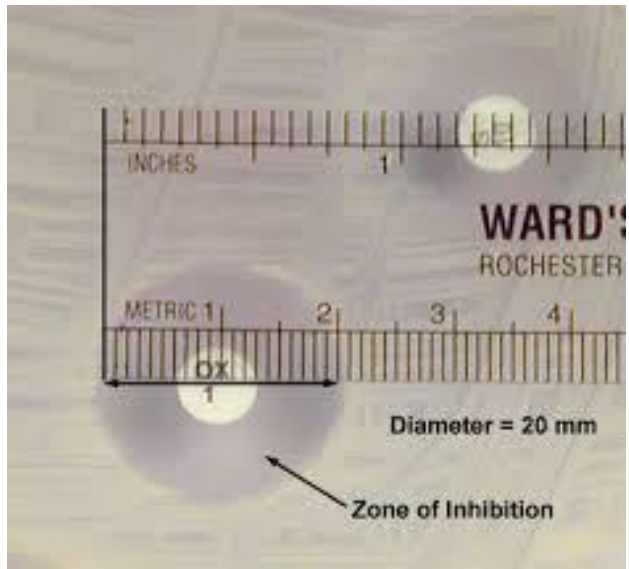




Zone of inhibition surrounding the antibiotic disc indicating sensitivity

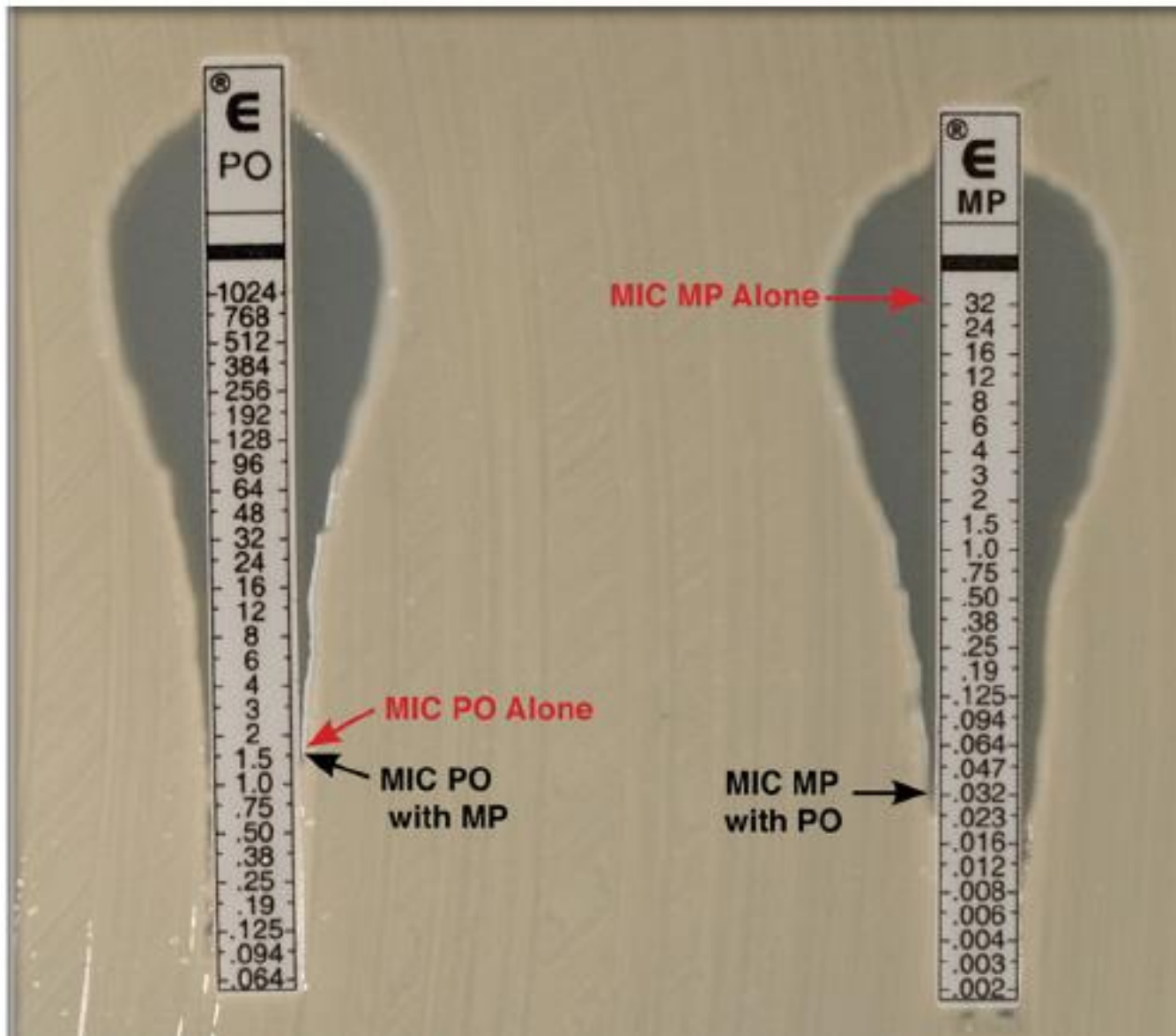
No zone of inhibition surrounding the antibiotic disc indicating resistance





Antibiotics used	Zone diameter measured (mm)		
	Sensitive	Intermediate	Resistant
Ampicillin, 10 μ g	≥ 10	N/A	≤ 9
Chloramphenicol, 30 μ g	≥ 23	12 - 22	≤ 11
Clindamycin, 2 μ g	≥ 18	16 - 17	≤ 15
Ciprofloxacin, 5 μ g	≥ 24	19 - 23	≤ 18
Erythromycin, 15 μ g	≥ 19	16 - 18	≤ 15
Gentamicin, 10 μ g	≥ 23	N/A	≤ 22
Kanamycin, 30 μ g	≥ 18	14 - 17	≤ 13
Nalidixic acid, 30 μ g	≥ 15	N/A	≤ 14
Streptomycin, 10 μ g	≥ 15	12 - 14	≤ 11
Tetracycline, 30 μ g	≥ 33	16 - 32	≤ 15
Vancomycin, 30 μ g	-	-	-

E-test



® E
TGC

256
192
128
96
64
48
32
24
16
12
8
6
4
3
2
1.5
1.0
.75
.50
.38
.25
.19
.125
.094
.064
.047
.032
.023
.016

® E
DPC

256
192
128
96
64
48
32
24
16
12
8
6
4
3
2
1.5
1.0
.75
.50
.38
.25
.19
.125
.094
.064
.047
.032
.023
.016