

# **Preparation and sterilization Of culture media**

**Culture of bacteria  
(Streak plate method)**

**Media** : referring to the substances were organism grown , it design to mimic the environment which the bacteria grown naturally

Sugar

Nitrogen

Elements

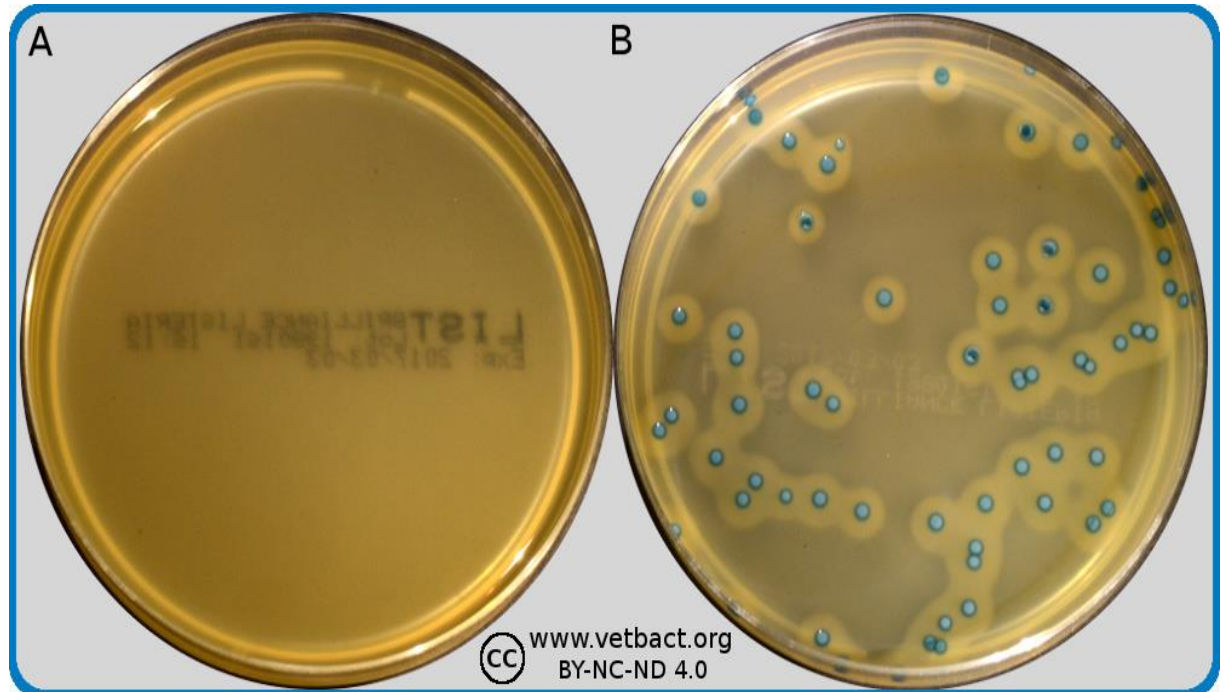
pepton

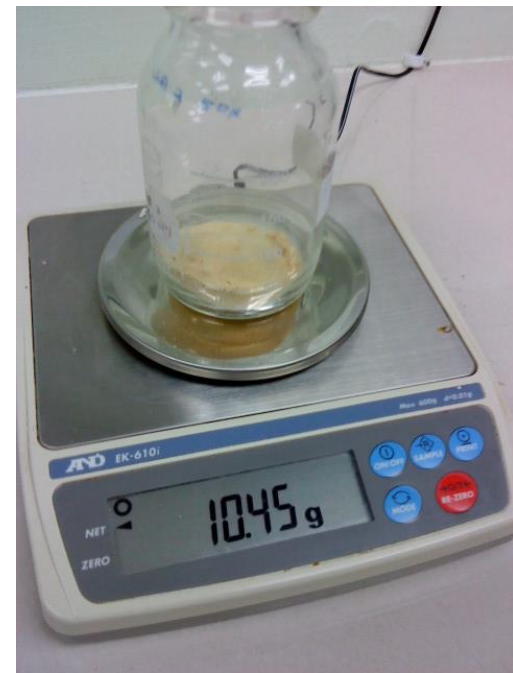
D.W

**Liquid media (broth)**



**Agar media**





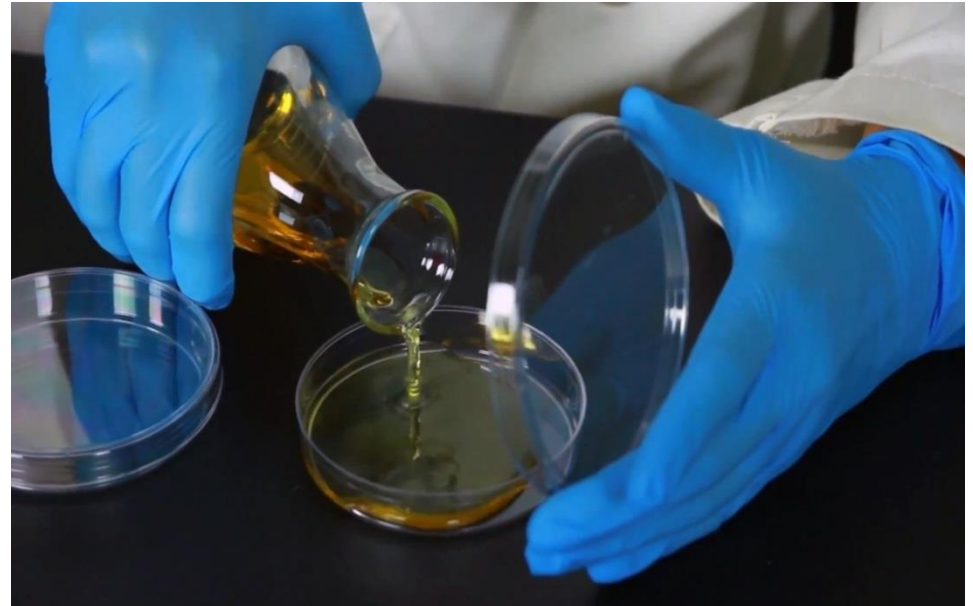


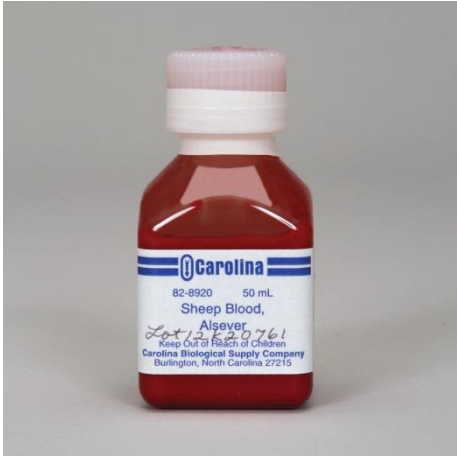
- **Autoclave condition:**
- 121 C
- 30 Min
- 15 pound/inch

Liquid media (broth)

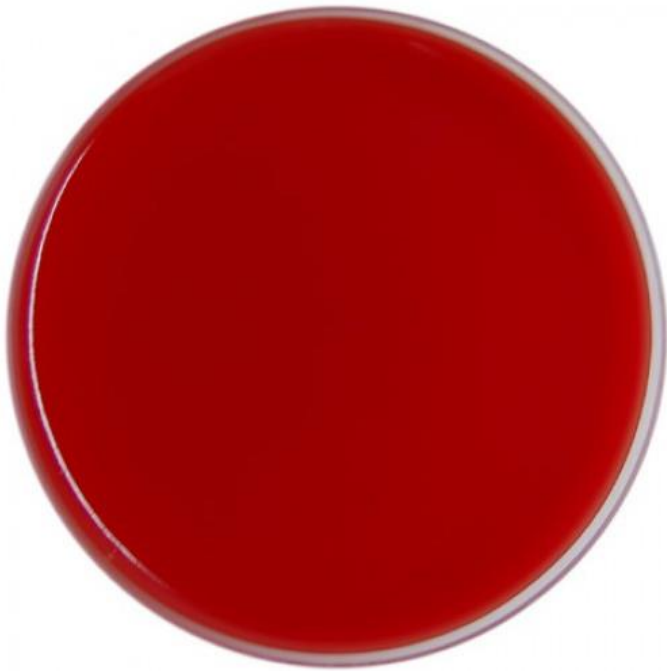


Agar media





# Enrichment media



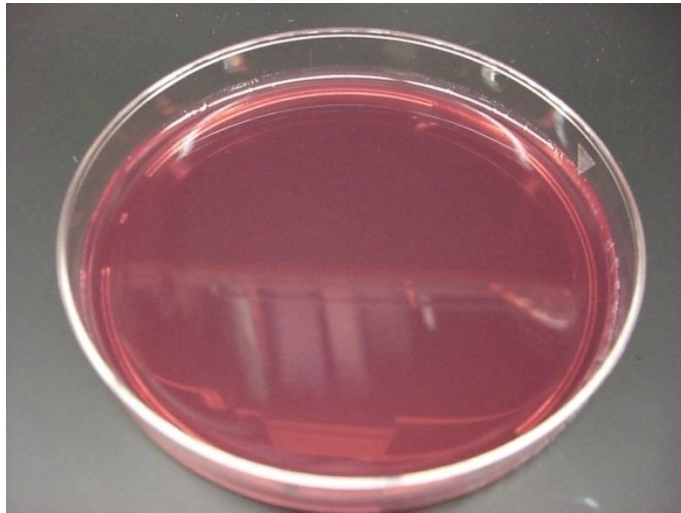
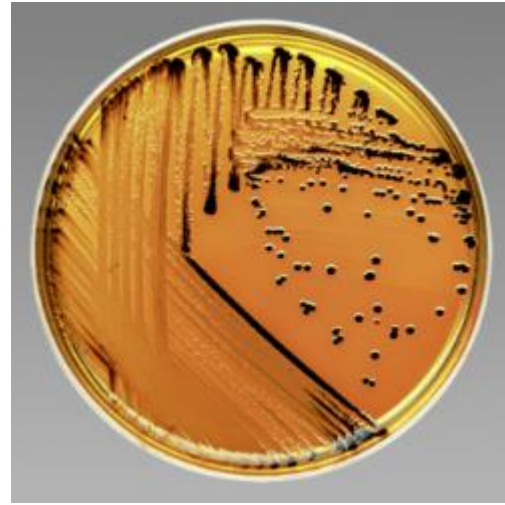
Alamy/Summ3r



# Selective media



SS Agar Plate  
(Salmonella-Shigella Agar)



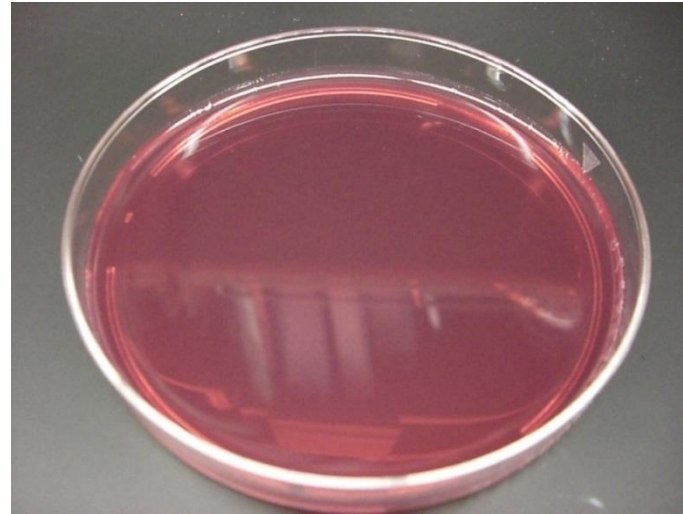
Macconkey agar media



# Differential media



SS Agar Plate  
(Salmonella-Shigella Agar)



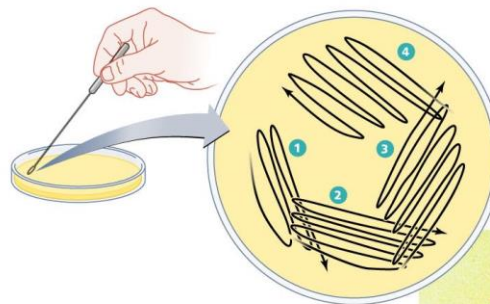
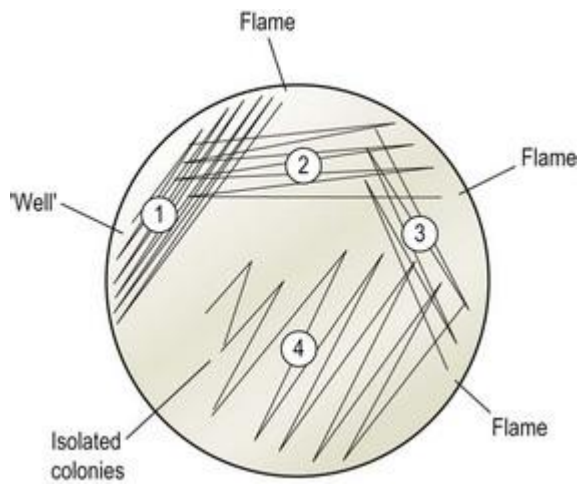
Lactose fermenting colonies

Non-lactose fermenting colonies

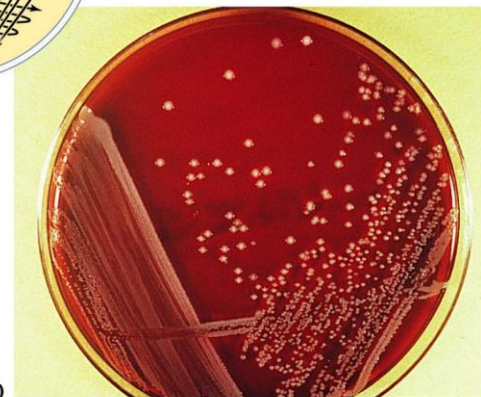
# Differential media



**CLED agar (cystine lactose electrolyte deficient medium)**



(a)



(b)

Copyright © 2006 Pearson Education, Inc., publishing as Benjamin Cummings.

