

**The University of Jordan  
Faculty Of Medicine**



# **Blood vessels of the neck**

**Dr.Ahmed Salman**

Associate professor of anatomy

## I-Arteries

### 1-Subclavian Artery

#### Origin:



#### Parts:

The scalenus anterior muscle divides the artery into 3 parts;

- ❖ **1st part** (Pre-scalene part) medial to scalenus anterior
- ❖ **2nd part** (Retro-scalene part ) deep to scalenus anterior
- ❖ **3rd part** (Post-scalene part ) lateral to scalenus anterior



#### End :

 **Branches:**

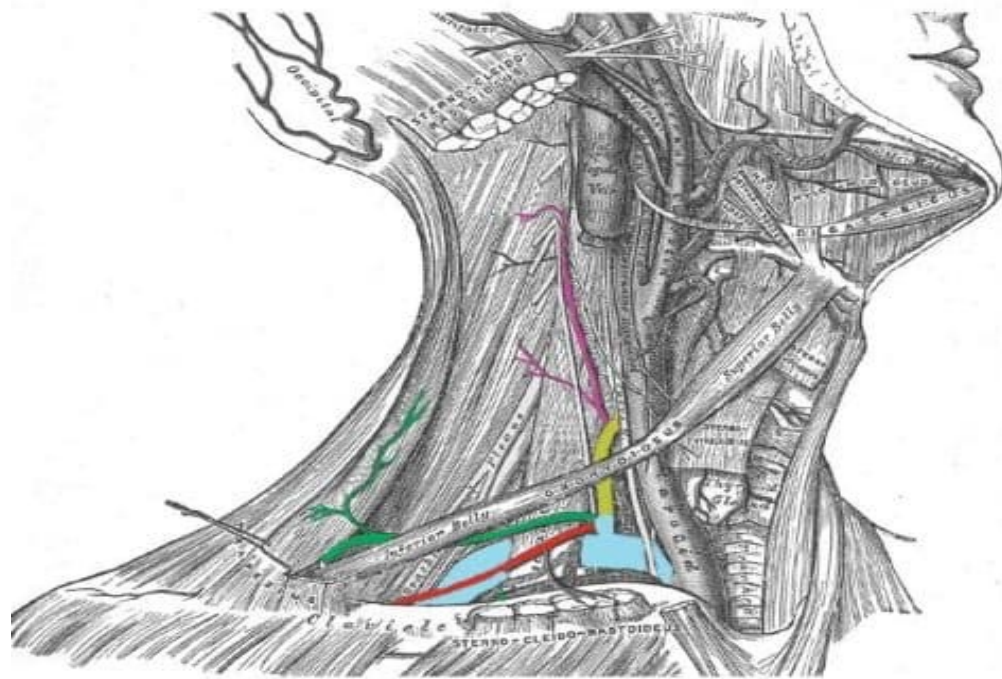
**a) From 1st part :**








**b) From 2nd part :**

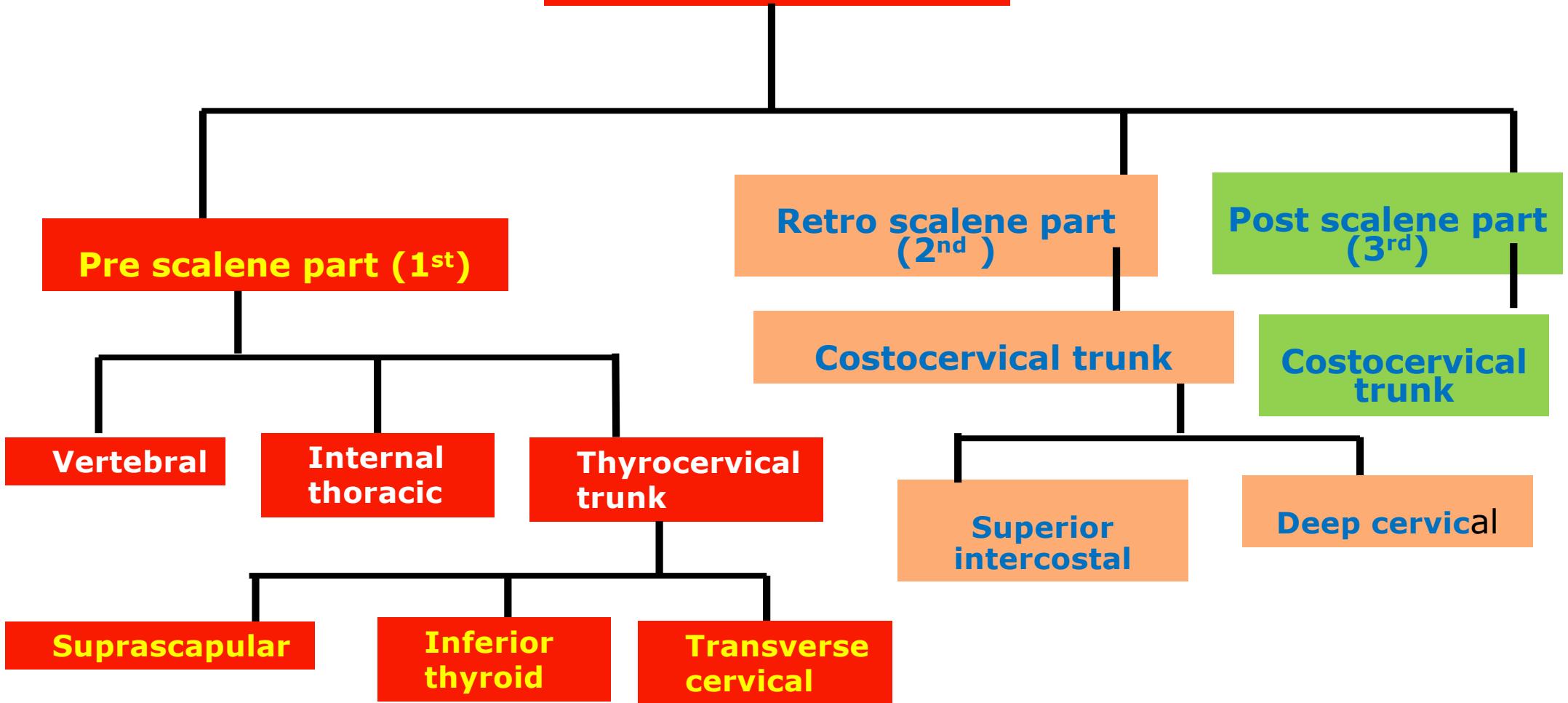


**c) From 3rd part :**



- |   |   |
|---|---|
|    | <b>Subclavian and thyrocervical trunk</b> |
|    | <b>Inferior thyroid</b>                   |
|   | <b>Ascending cervical</b>                 |
|  | <b>Transverse cervical</b>                |
|  | <b>Suprascapular</b>                      |

# Subclavian Artery



## 2- Common Carotid Artery (CCA)

### Origin:

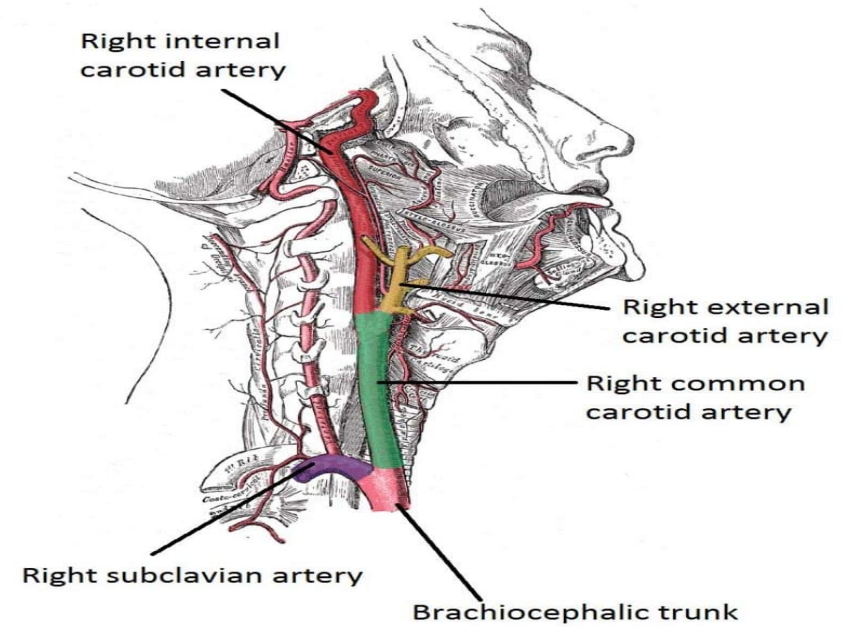
- **Right artery:** Arises from the



- **Left artery:** Arises from the






### End :



## A. External Carotid Artery

### Origin:

### Course and termination:

It ascends  to internal carotid artery outside carotid sheath and ends  in the substance of parotid gland by dividing into: 

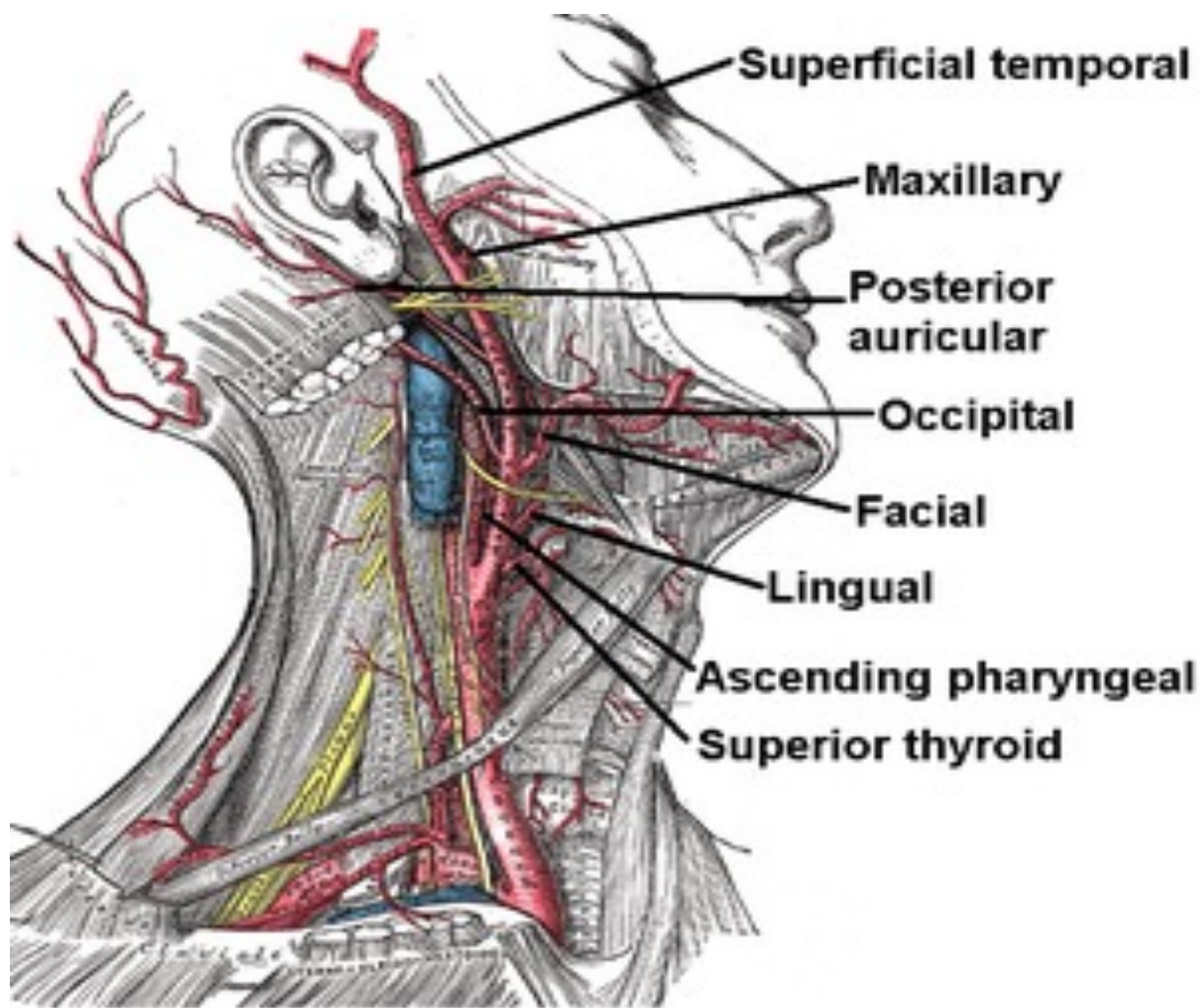
### Branches of external carotid artery:

**1. Three from the anterior aspect:** **S**uperior thyroid, **L**ingual and **F**acial arteries.

**2. Two from the posterior aspect:** **O**ccipital and **P**osterior auricular arteries.

**One from the medial (deep) aspect:** **A**scending pharyngeal artery

**Some African Ladies Found Our Petra More Satisfactory**




## B. Internal Carotid Artery

 **Origin:**

**Termination:**



At its beginning it shows a localized dilatation called 

**Parts :** It has 4 parts:

**1-Cervical part:** It lies in the neck, inside carotid sheath,  to vagus and internal jugular vein.

**Branches:** It has no branches in the neck.

**2-Petrous part:** pass in the 

 , then leave it, and passes through the 





to enter the 

**Branches:**





### 3-Cavernous part:

- ❖ Inside the cavernous sinus, the artery runs in a sinuous course .
- ❖ It leaves the sinus through the  part of its roof.
- ❖ The artery runs  to abducent nerve and  to oculomotor nerve ,  
 trochlear nerve , ophthalmic and maxillary respectively

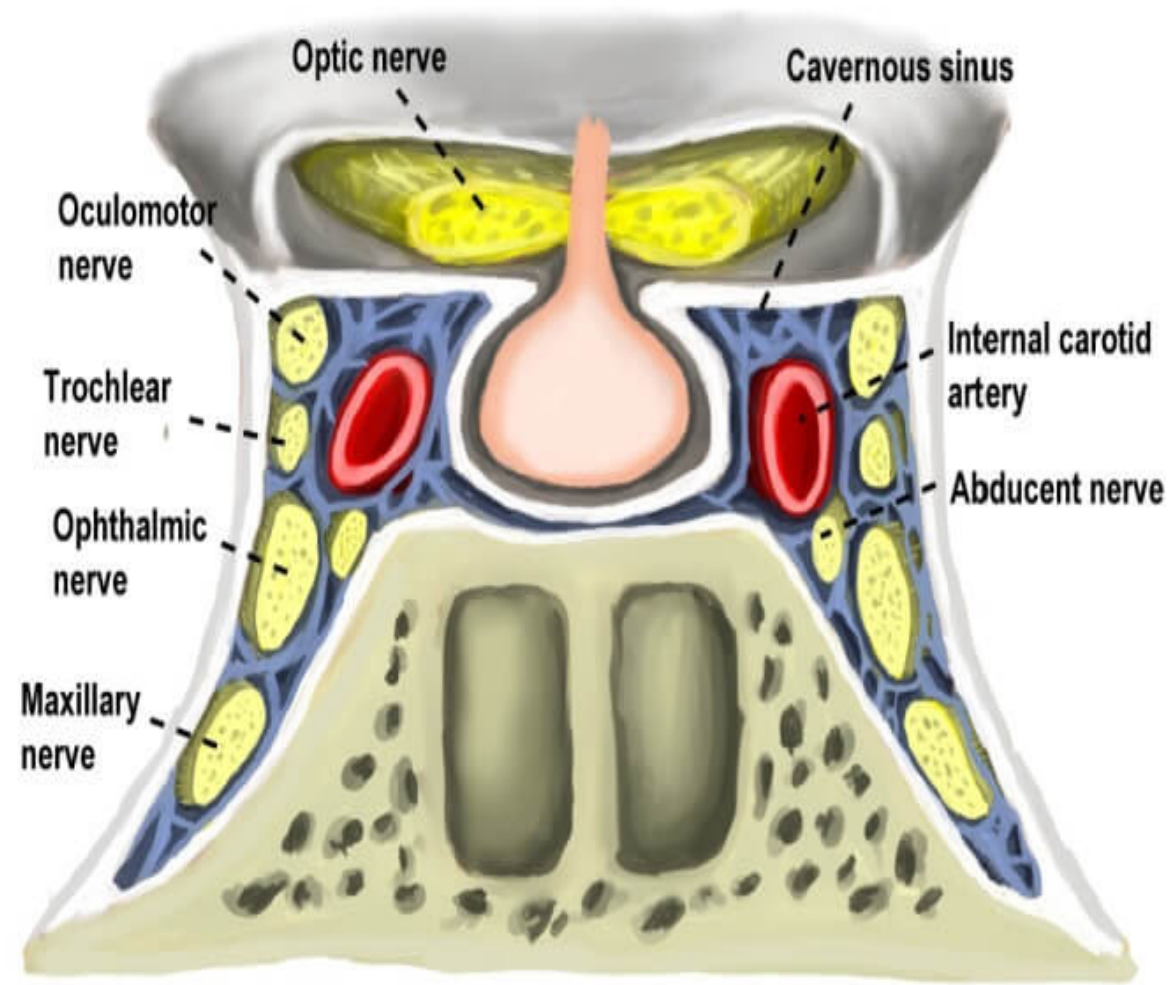
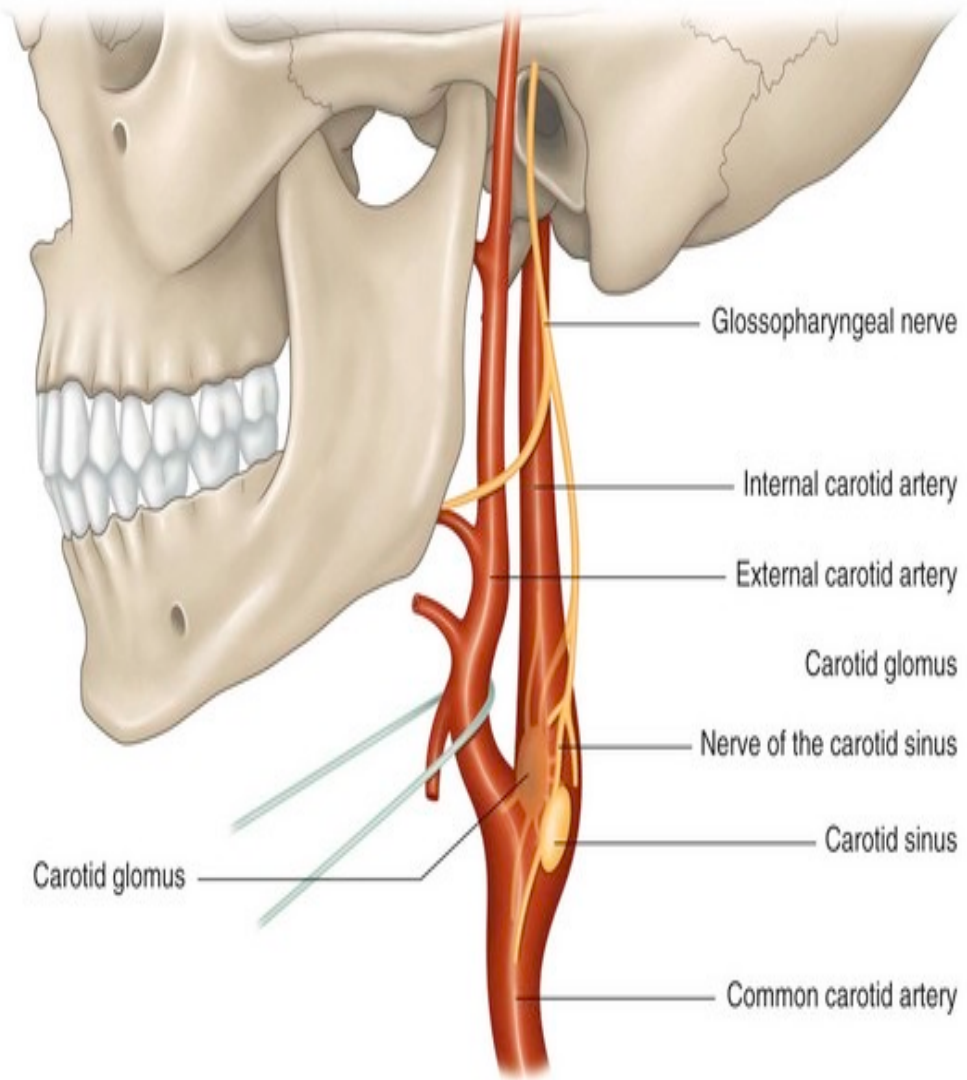
#### **Branches:**

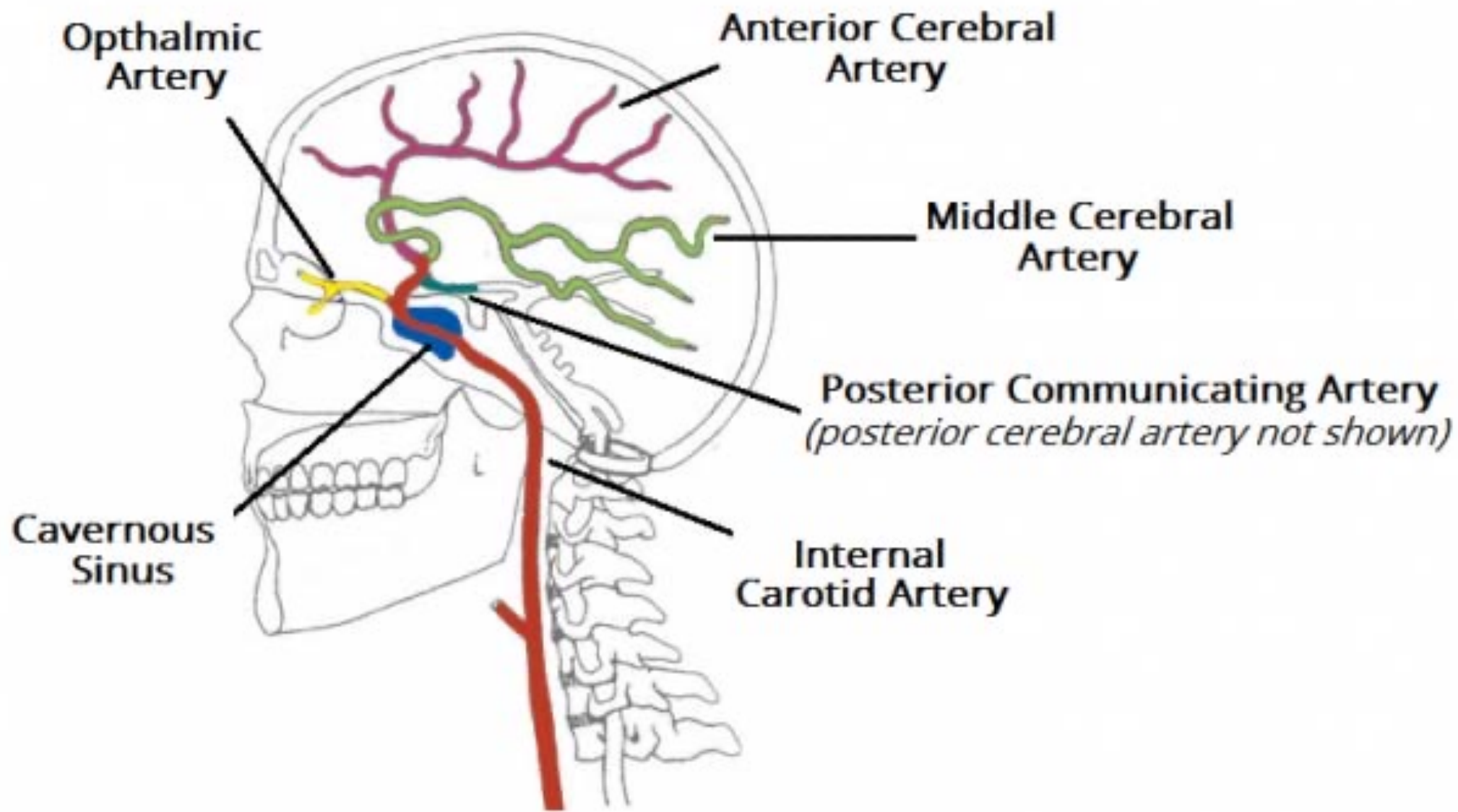
### 4-Cerebral part:

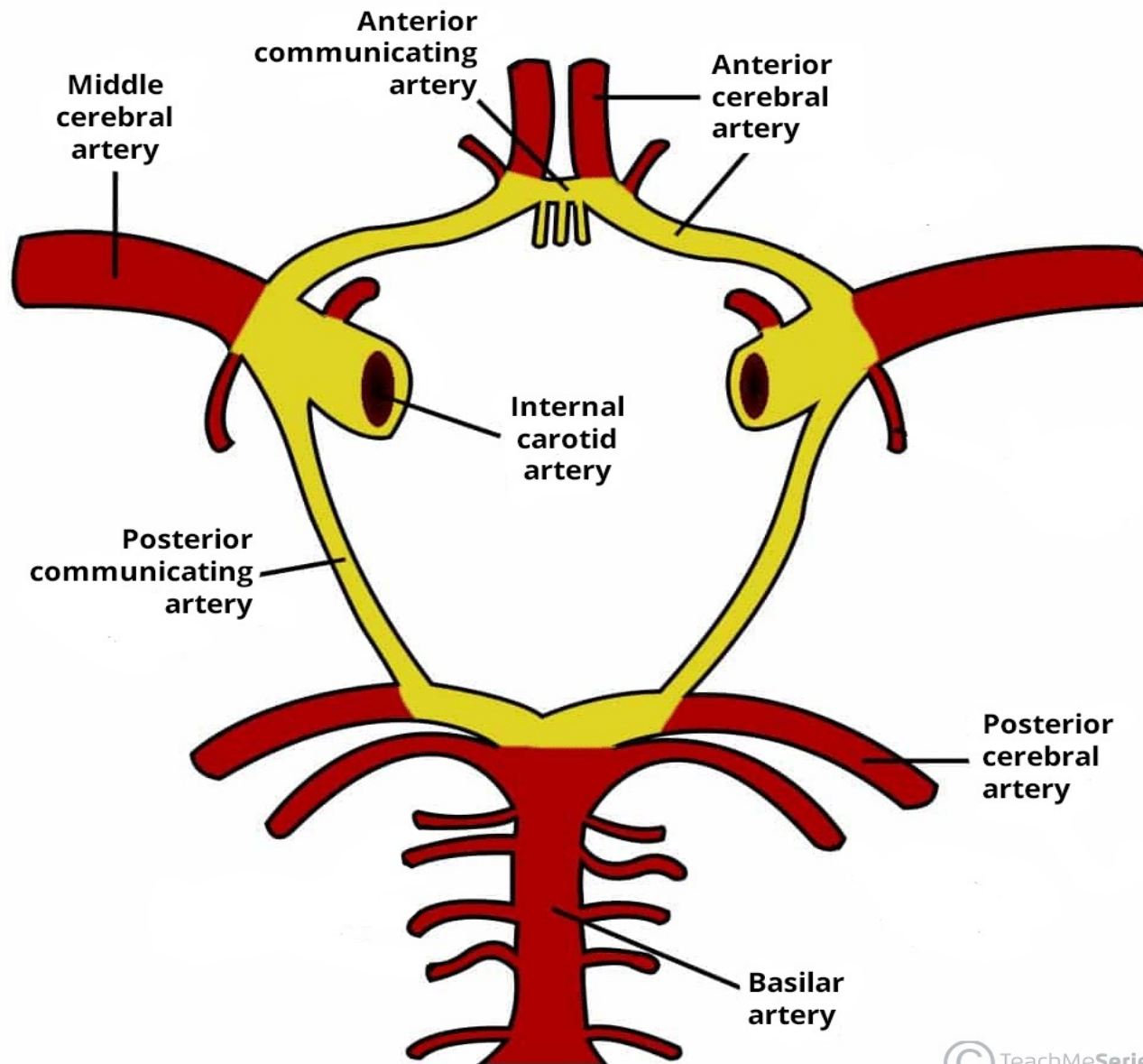
After leaving the roof of cavernous sinus, the artery ends just below **the anterior perforated substance of** the base of the brain by dividing into its two terminal branches ( anterior & middle cerebral arteries ) .

#### **Branches:**

1. Ophthalmic artery.
2. Anterior cerebral artery.
3. Middle cerebral artery.
4. Posterior communicating artery.
4. Anterior choroidal artery.










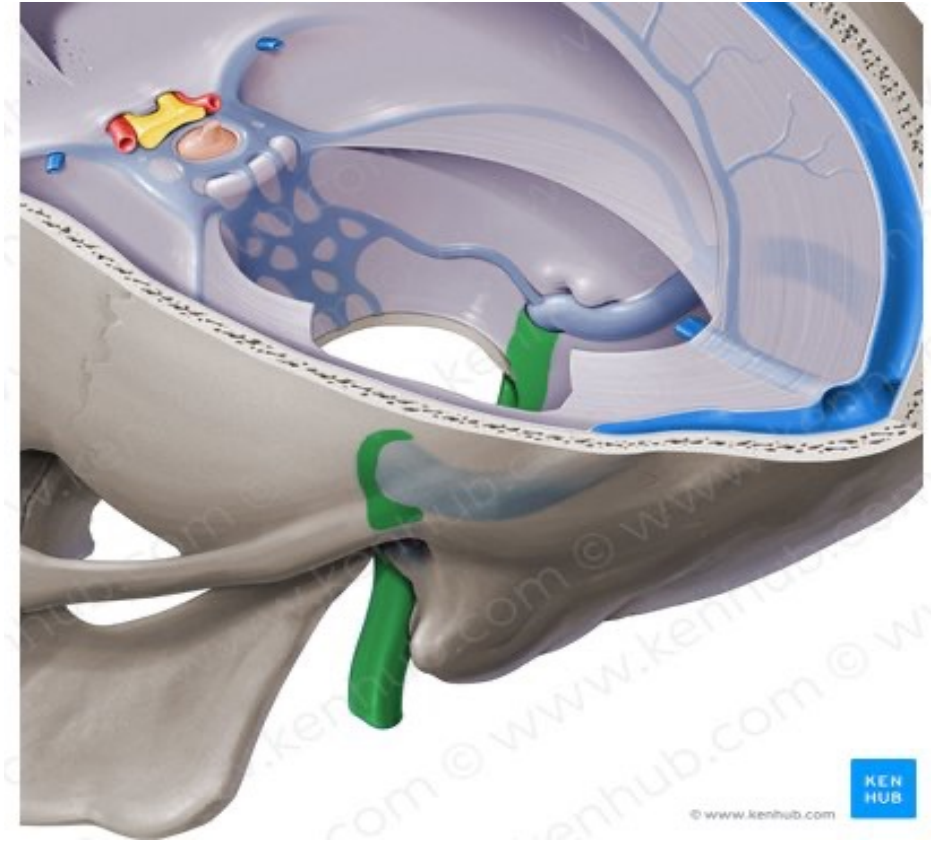
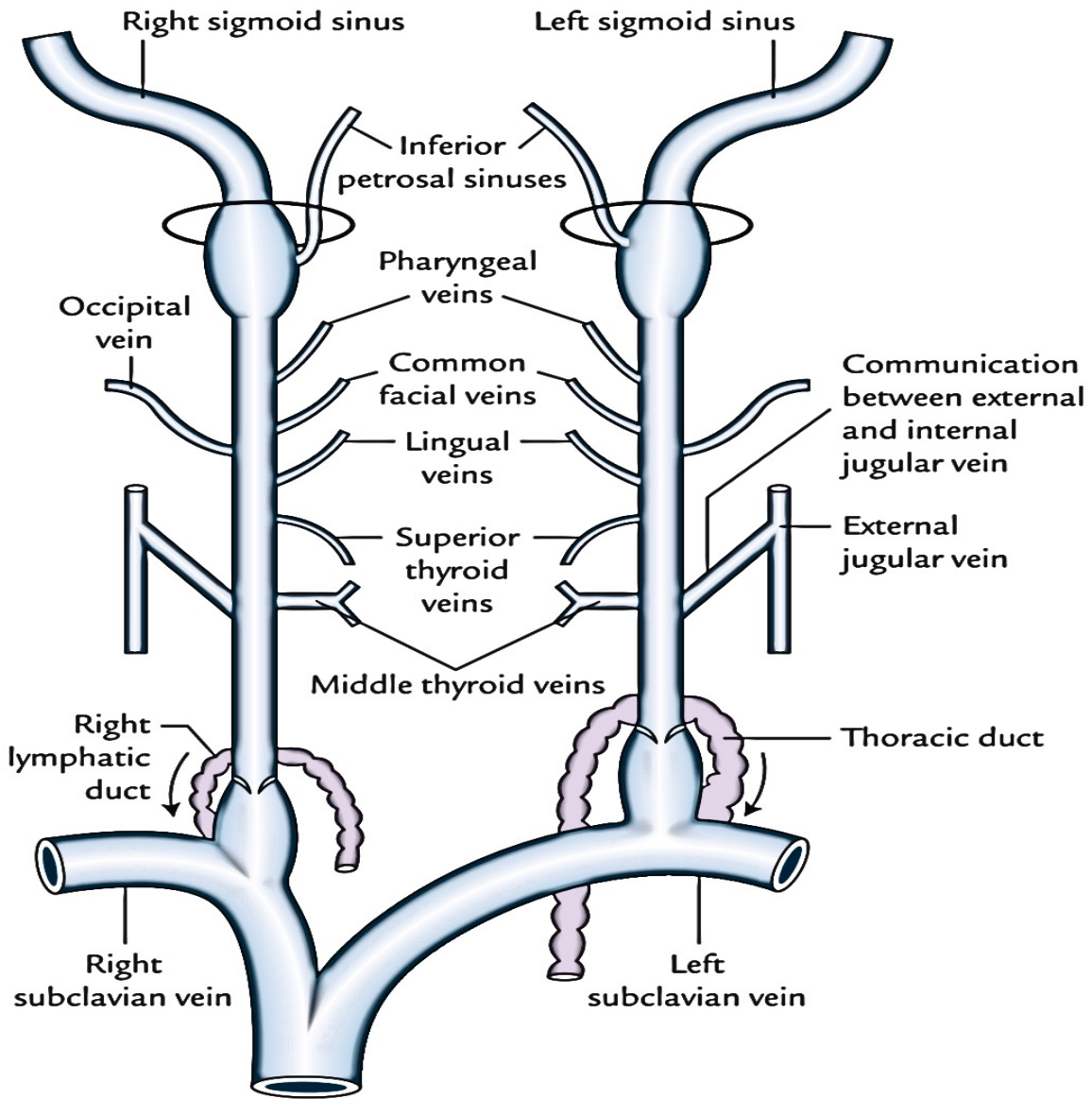


## II. Veins :

### Internal Jugular Vein

- \* It **begins** at the  as a continuation of the 
- \* It **descends** inside the carotid sheath  to the internal and common carotid arteries and vagus nerve.
- \* It **ends** by joining the  to form the brachiocephalic vein 
- \* At its upper and lower ends, it forms the superior and inferior bulbs.
- \* **Tributaries:** From above downwards:
  1. Inferior petrosal sinus.
  2. Pharyngeal veins.
  3. Common facial vein.
  4. Lingual vein.
  5. Superior thyroid vein.
  6. Middle thyroid vein.





Thank  
you

The image features the words "Thank you" written in a black, elegant cursive script. The text is set against a white background and is surrounded by various teal-colored decorative elements. These include several leaves of different shapes and sizes, some with detailed vein patterns, and small, four-pointed starburst symbols. The overall composition is balanced and aesthetically pleasing, with the teal elements framing the central text.