

بِسْمِ اللَّهِ الرَّحْمَنِ الرَّحِيمِ



الجاني

FINAL | Lectures (1&2)

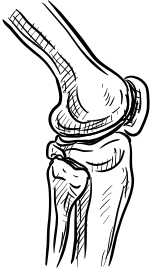
وَإِن تَتَوَلَّوْا يَسْتَبَدِلْ قَوْمًا غَيْرَكُمْ ثُمَّ لَا يَكُونُوا أَمْثَلَكُمْ

اللهم استعملنا ولا تستبدلنا

Past papers

Written by : Layan Fawarseh
Aya Altaki

Reviewed by : Dana Hijjeh



HISTOLOGY



The background features three vertical bars on the left side: a purple bar, a green bar, and a light blue bar. In the top right and bottom left corners, there is a pattern of small, light red dots arranged in a grid that tapers towards the edges.

Past papers

Always remember that past exam questions are only for practice.

Questions:1-30

Bismillah, let's go!

Which sequence correctly orders the layers of the epidermis in thin skin from outermost to innermost:

- A) Corneum, granulosum, spinosum, basale
- B) Corneum, lucidum, granulosum, spinosum, basale
- C) Corneum, spinosum, granulosum, basale
- D) Spinosum, basale, corneum, granulosum

Which of the following sentences is true about thick skin?

- A) It has prominent stratum corneum
- B) presence of hair follicles
- C) There are no sebaceous glands, but there is apocrine salivary glands
- D) Most dominant over the body

Ans: A

Choose the wrong statement about the epidermis:

- A) Langerhans cells' embryonic origin is from monocytes
- B) The most abundant type of cell in epidermis is keratinocytes
- C) Merkel cells are mostly found in fingertips
- D) melanocytes are found in stratum spinosum
- E) stratum lucidum doesn't contain mitosis activity

Ans: D

Thick skin, choose the **WRONG** statement:

- A) Composed of 5 epidermal layers
- B) Found on palms and soles
- C) Usually has a thicker dermis than thin skin
- D) Contains one type of sweat glands
- E) Has prominent epidermal-dermal ridges

Ans: C

Wrong statement about stratum granulosum:

Ans: lameller granules are non-membrane-bound granules

Mismatched pair:

- A) Stratum spinosum >Langerhans cells are abundant
- B) Stratum Lucidum >not found in all skin types
- C) Stratum corneum >Dead cells
- D) Stratum granulosum >non-membranous bound lamellar granule
- E) All answers are paired correctly

Which of the following statements is wrong regarding thick skin:

- A) It is found in palms and soles
- B) Its epidermis consists of five layers
- C) Its dermis is thicker than the dermis of thin skin
- D) It has no hair or sebaceous glands

Merkel cells and melanocytes are located in:

- A) Stratum corneum
- B) Stratum granulosum
- C) Stratum spinosum
- D) Stratum basale

Ans: D

Thin skin, choose the CORRECT statement:

- A) Contains one type of sweat glands
- B) Usually has a thicker dermis than thick skin
- C) Found on palms and soles
- D) Has prominent epidermal-dermal ridges
- E) Composed of 5 epidermal layers

استغفر الله العظيم

Ans: B

Which of the following is FALSE about melanocytes:

- A) They store the melanin pigment, so they appear brown in color
- B) They are located in stratum basale
- C) They transfer melanosomes to near by keratinocytes
- D) Their proliferation is stimulated by exposure to sun light

Integumentary system, choose the **WRONG** match:

- A) Arrector pili: supplied by sympathetic fibers
- B) Inner root sheath: continuous with epidermis
- C) Stratum germinativum: stratum basale along with the deepest part of stratum spinosum
- D) Merkel cell: found in stratum basale
- E) Stratum granulosum: contains two types of granules

Which type of encapsulated nerve ending is located in dermal papillae:

- A) Free nerve endings
- B) Ruffini corpuscle
- C) Merkel's disc
- D) Meissner's corpuscle
- E) Pacinian corpuscle

Which cell is a mechanoreceptor:

- A) Langerhans cell
- B) Keratinocyte
- C) Melanocyte
- D) Merkel cell

Ans: D

Which of the following responds to continuous pressure?

- A) Free nerve endings
- B) Ruffini's corpuscles
- C) Pacinian corpuscles
- D) Krause's end bulbs
- E) Meissner's corpuscle

حسبي الله لا إله إلا هو عليه
توكلت وهو رب العرش العظيم

Ans: C

Which is continuous with outer epidermis of the hair follicle:

- A) Inner root sheath
- B) outer root sheath
- C) Hair matrix
- D) Dermal papillae

The question is from past papers but the options are generated by me.

Ans: B

Apocrine sweat glands and sebaceous glands are similar to each other in which of the following features:

- A) Location in the body
- B) Association with hair follicles
- C) Their mode of secretion
- D) The produced material

Merkel cells and melanocytes are located in:

- A) Stratum corneum
- B) Stratum granulosum
- C) Stratum spinosum
- D) Stratum basale

All the following are seen in this section except:

- A) Sebaceous glands
- B) Arrector pili
- C) Stratum lucidum



Ans: C

Which of the following is False about melanocytes:

- A) They store the melanin pigment, so they appear brown in color
- B) They are located in stratum basale
- C) They transfer melanosomes to near by keratinocytes
- D) Their proliferation is stimulated by exposure to sun light

Which of the following layers is made of loose connective tissue:

- A) Epidermis
- B) reticular layer of dermis
- C) Hypodermis
- D) reticular layer of dermis and hypodermis

Which of the following statements is wrong regarding thin skin:

- A) the stratum corneum layer thickness plays a significant role in determining the thickness difference between thin and thick skin
- B) it has less prominent stratum granulosum
- C) its dermis is less cellular in comparison to that of the thick skin
- D) the interdigitations between the epidermis & dermis are as developed as those in thick skin

Which of the following statement is NOT TRUE:

- A) The substance most produced in the hair is melanin
- B) The substance most produced in the epidermis is keratin
- C) The substance most produced in the dermis is collagen
- D) The substance most produced in the subcutis is fat
- E) All answers are True

Which of the following statements about eccrine sweat glands is true:

- A) They are absent in thick skin
- B) They are holocrine glands
- C) They have a narrow duct lined by a stratified cuboidal epithelium
- D) They secrete an oily material called sebum
- E) They empty into hair follicles

Which layer of the epidermis contains star shaped cells :

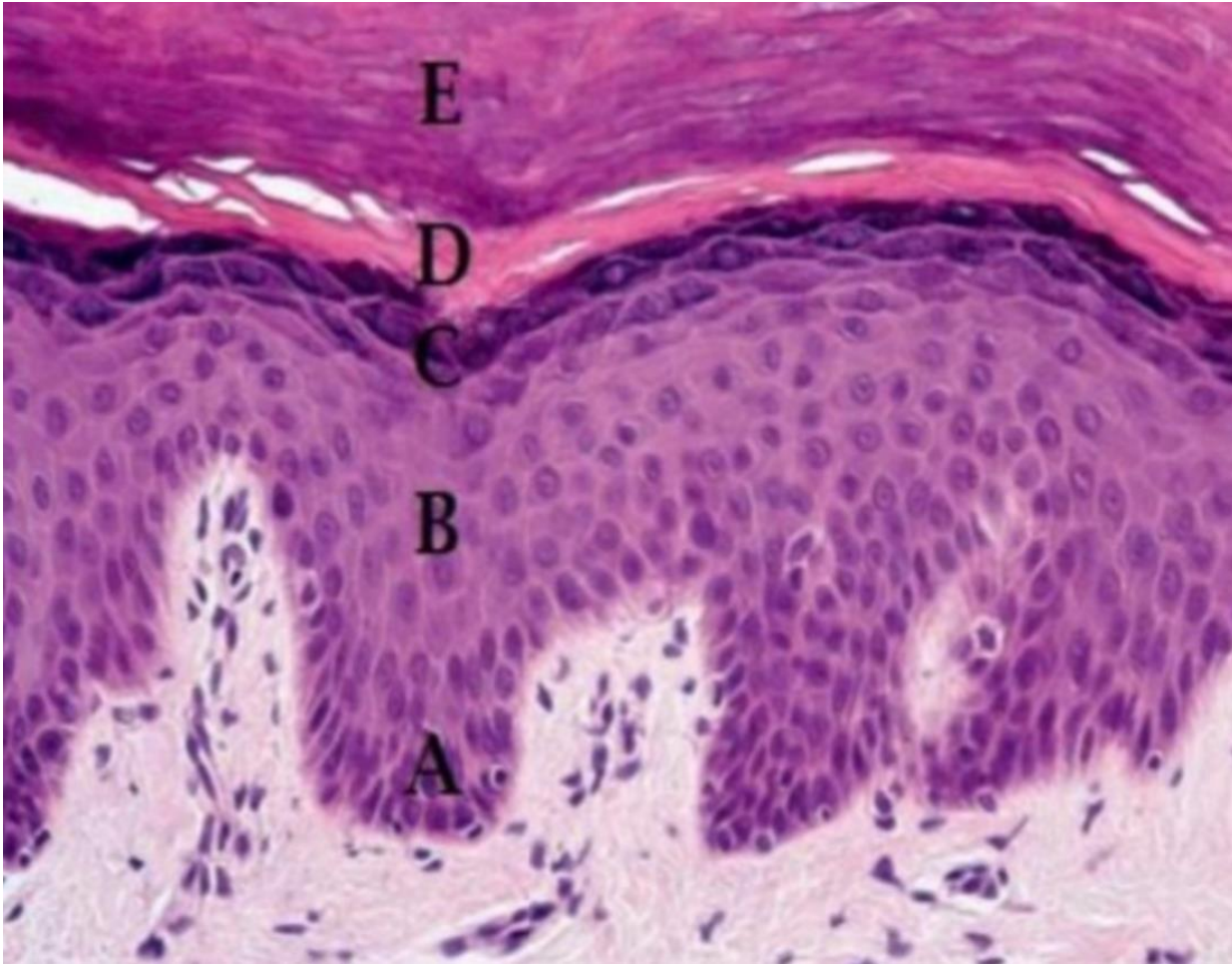
- A) Stratum basale
- B) Stratum spinosum
- C) Stratum granulosum
- D) Stratum lucidum
- E) Stratum corneum

Ans: B

Choose the correct statement regarding hair follicles:

- A) Males have more follicles than females
- B) Females have more follicles than males
- C) Males and females have the same number of follicles
- D) Children have more follicles than adults

Name B, D respectively:



Ans: B: stratum spinosum
D: stratum lucidum

One of the following is wrong:

- A) Pacinian corpuscle is found deep in the reticular dermis
- B) Merkel disc is for sensing light touch and texture
- C) Meissner's corpuscle is located deep in the reticular dermis
- D) Stretch sensation is sensed by Ruffini corpuscle

One of the following is wrong:

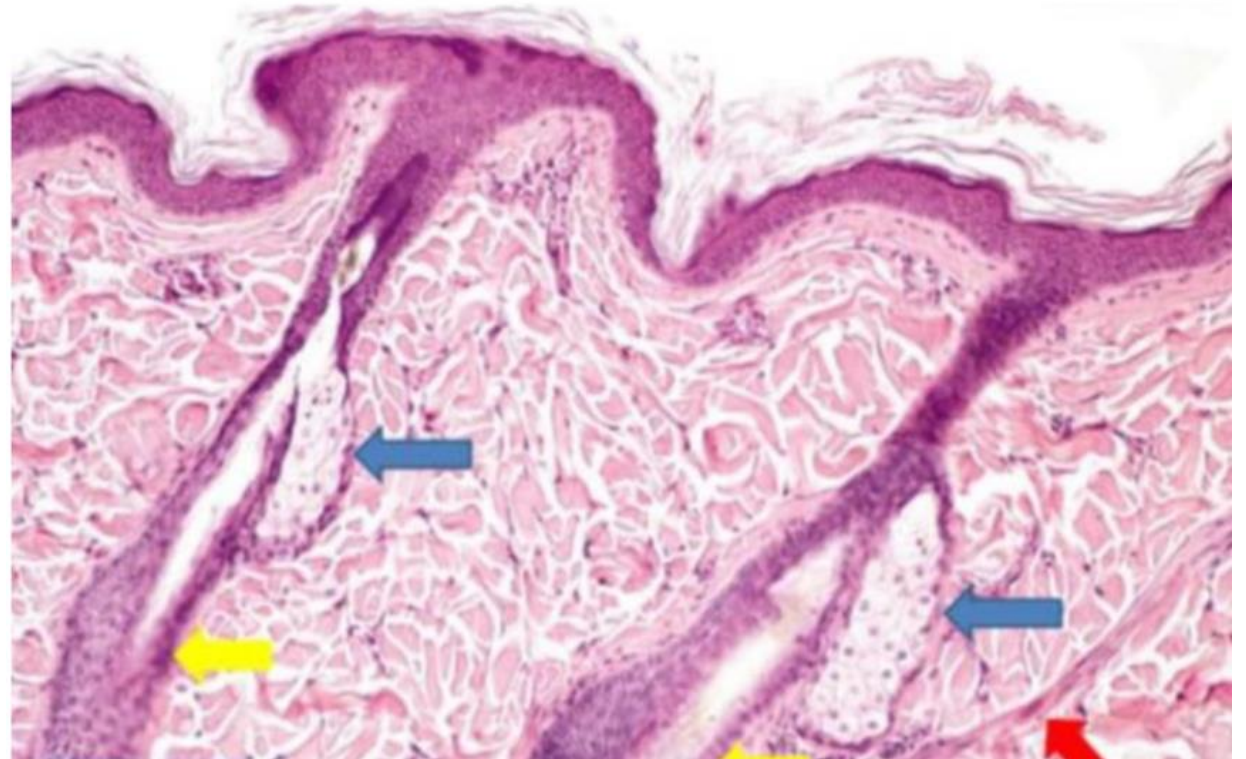
- A) Eccrine sweat glands empty into hair follicles
- B) Sebaceous glands secrete by holocrine secretion
- C) Contraction of arrector pilli muscles causes goose bumps
- D) The part of a hair that is below the skin surface (embedded part) is the hair root

One of the following is wrong about hair structure:

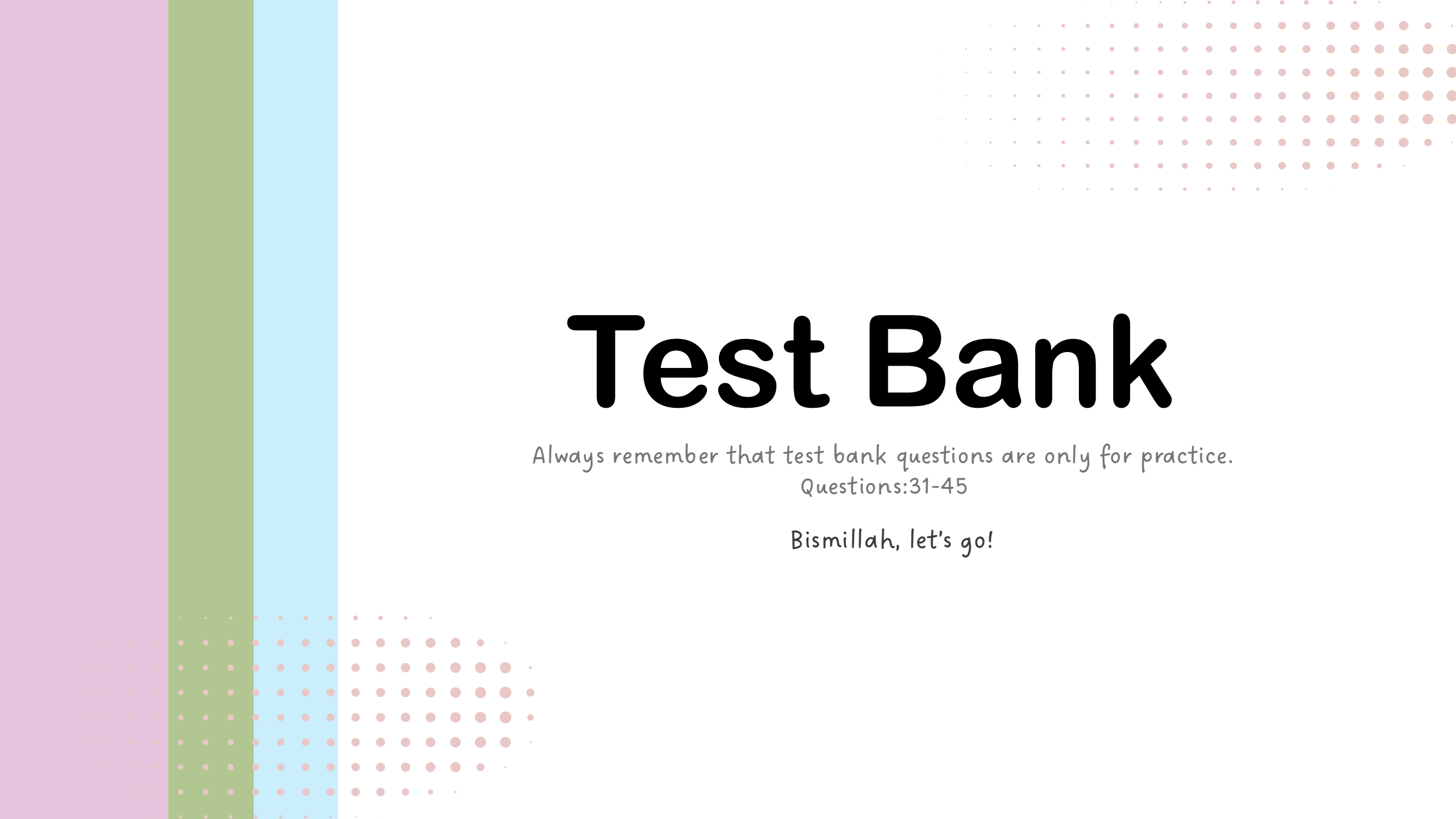
- A) Apocrine sweat glands empty into hair follicles
- B) The outer root sheath terminates at the level of the sebaceous glands
- C) Melanocytes located in the hair matrix produce hair color
- D) The outer root sheath does not take part in hair formation

Label the following (blue arrow):

- A) Hair follicle
- B) Arrector pili
- C) Stem cells
- D) Sebaceous gland
- E) Dermal papilla



Ans: D

The background features three vertical bars on the left side: a purple bar, a green bar, and a light blue bar. In the top right and bottom left corners, there is a pattern of small, light red dots arranged in a grid that tapers off towards the center.

Test Bank

Always remember that test bank questions are only for practice.

Questions:31-45

Bismillah, let's go!

Which layer of the epidermis is responsible for continuous cell division?

- A) Stratum Corneum
- B) Stratum Granulosum
- C) Stratum Spinosum
- D) Stratum Basale

Ans: D

What is the primary function of the stratum corneum?

- A) Cell division
- B) Waterproofing and protection
- C) Sensory perception
- D) Melanin production

"وفي أنفسكم أفلا تبصرون"

Ans: B

Which layer of the skin contains blood vessels and nerve endings?

- A) Epidermis
- B) Dermis
- C) Hypodermis
- D) Stratum Lucidum

Ans: B

Which type of sweat gland is responsible for body odor?

- A) Eccrine glands
- B) Apocrine glands
- C) Sebaceous glands
- D) Merocrine glands

Ans: B

What is the pH of the acid mantle of the skin?

- A) 4.5
- B) 5.5
- C) 6.5
- D) 7.5

Ans: B

Which of the following is responsible for the sensation of light touch?

- A) Pacinian corpuscles
- B) Meissner corpuscles
- C) Ruffini corpuscles
- D) Free nerve endings

Ans: B

What is the primary function of sebaceous glands?

- A) Produce sweat
- B) Secrete sebum to lubricate skin and hair
- C) Regulate body temperature
- D) Detect pressure and vibrations

Ans: B

Which of the following is the resting phase of the hair growth cycle?

- A) Anagen
- B) Catagen
- C) Telogen
- D) Exogen

Ans: C

What is the primary function of Merkel cells?

- A) Produce keratin
- B) Detect light touch
- C) Synthesize melanin
- D) Phagocytose foreign antigens

استغفر الله العظيم وأتوب إليه

Ans: B

Which of the following is responsible for the sensation of pressure and vibrations?

- A) Meissner corpuscles
- B) Pacinian corpuscles
- C) Ruffini corpuscles
- D) Free nerve endings

Ans: B

What is the primary function of the hypodermis?

- A) Protection against UV radiation
- B) Insulation and energy storage
- C) Sensory perception
- D) Production of vitamin D

Ans: B

Which of the following is the primary component of the nail?

- A) Collagen
- B) Keratin
- C) Melanin
- D) Sebum

Ans: B

Which of the following is responsible for the sensation of stretch and twisting?

- A) Meissner corpuscles
- B) Pacinian corpuscles
- C) Ruffini corpuscles
- D) Free nerve endings

What is the primary function of the arrector pili muscles?

- A) Secrete sebum
- B) Cause hair to stand on end (goosebumps)
- C) Detect pressure and vibrations
- D) Regulate body temperature

"لا إله إلا أنت سبحانك إني
كنت من الظالمين"

Ans: B

Which of the following is another name for the hypodermis?

- A) Superficial fascia
- B) Subcutaneous tissue
- C) Subdermal fat
- D) All of the above

Ans: D

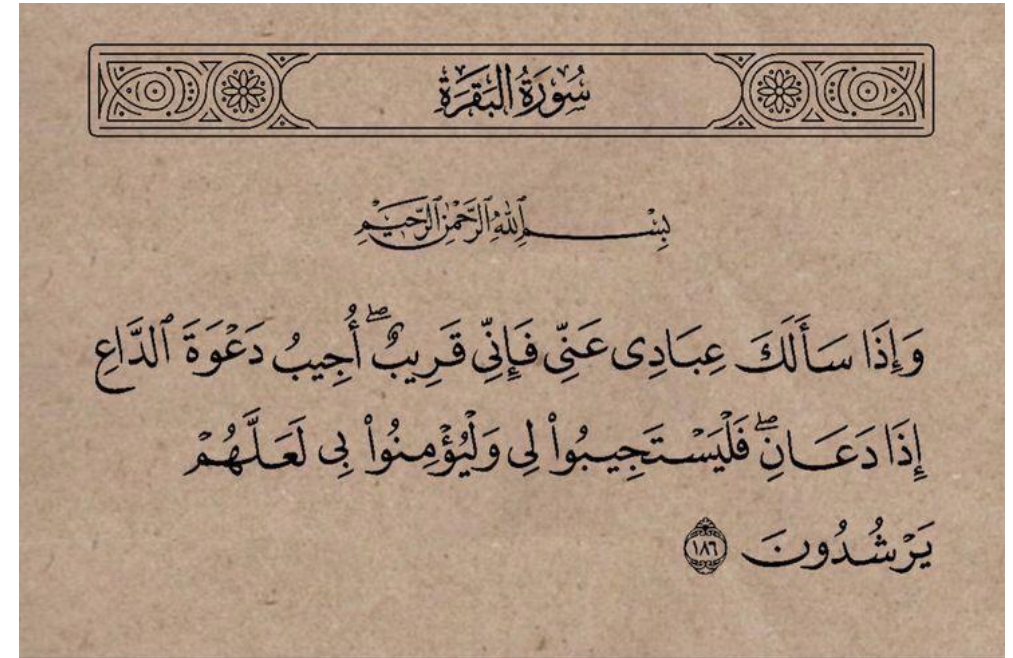
For any feedback, scan the code or click on it.



Corrections from previous versions:

Versions	Slide # and Place of Error	Before Correction	After Correction
V0 → V1			
V1 → V2			

رسالة من الفريق العلمي:



عن أبي هريرة رضي الله عنه، عن رسول الله - صلى الله عليه وسلم - ، قال : " الإيمان بضع وسبعون شعبة ، والحياء شعبة من الإيمان " ، وفي رواية : " بضع وسبعون - أو بضع وستون - شعبة ، فأفضلها : قول لا إله إلا الله ، وأدناها : إمطة الأذى عن الطريق ، والحياء شعبة من الإيمان " .