



Skull Practical Part 2

Dr. Ahmed Salman

Associate professor of anatomy & embryology

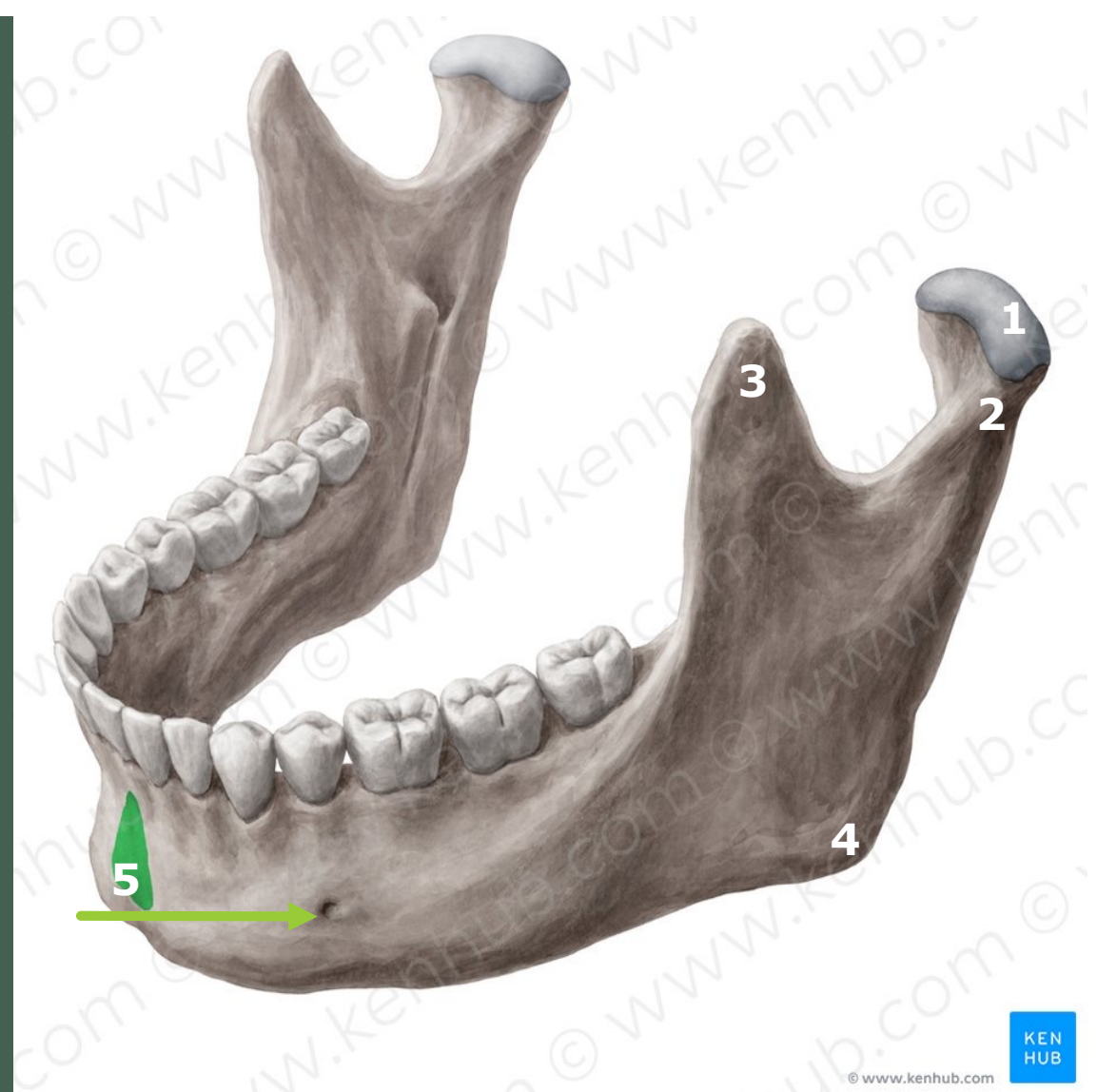
Mandible

Check list

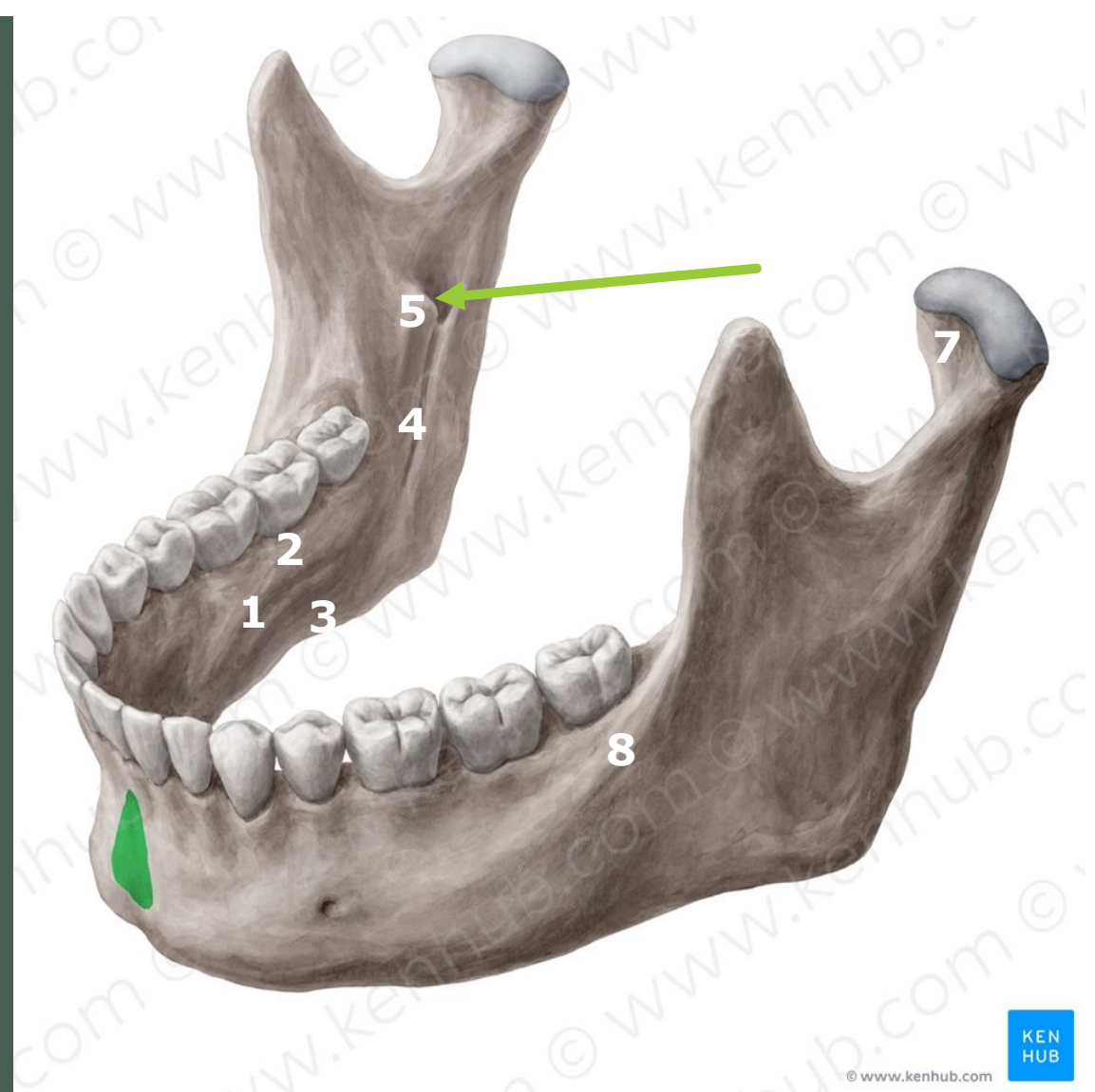
1. Condylar process
2. Coronoid process
3. Angle
4. Mental protuberance
5. Mental foramen
6. Mylohyoid line
7. Sublingual fossa
8. Submandibular fossa
9. Mylohyoid groove
10. Lingula
11. Mandibular foramen
12. Pterygoid fossa
13. Oblique line
14. Superior and inferior genial tubercles
15. Digastric fossa

It composed of ramus and body

1. Head
2. Neck (Head and neck compose condylar process)
3. Coronoid process
4. Angle
5. Mental protuberance
6. Mental foramen



1. Mylohyoid line
2. Sublingual fossa
3. Submandibular fossa
4. Mylohyoid groove
5. Lingula
6. Mandibular foramen
7. Pterygoid fossa
8. Oblique line



1. Superior and inferior genial tubercles
2. Digastric fossa

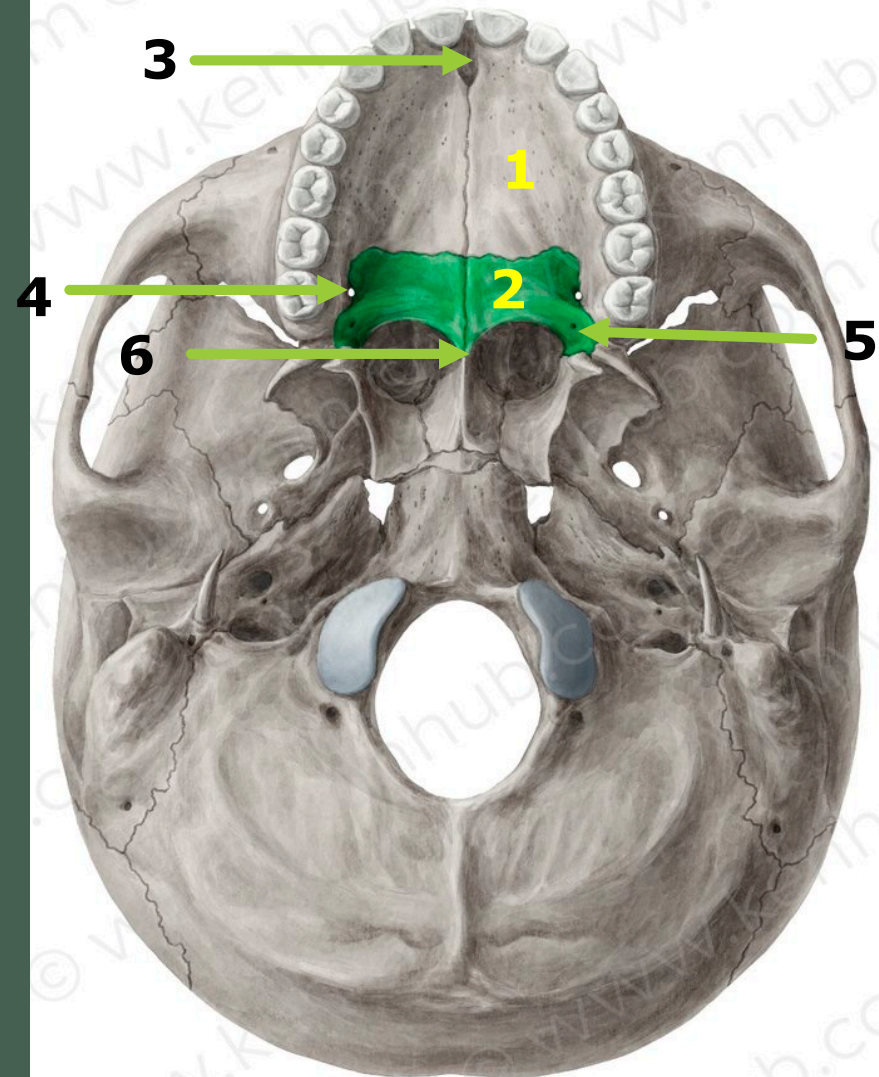


Norma Basalis Externa

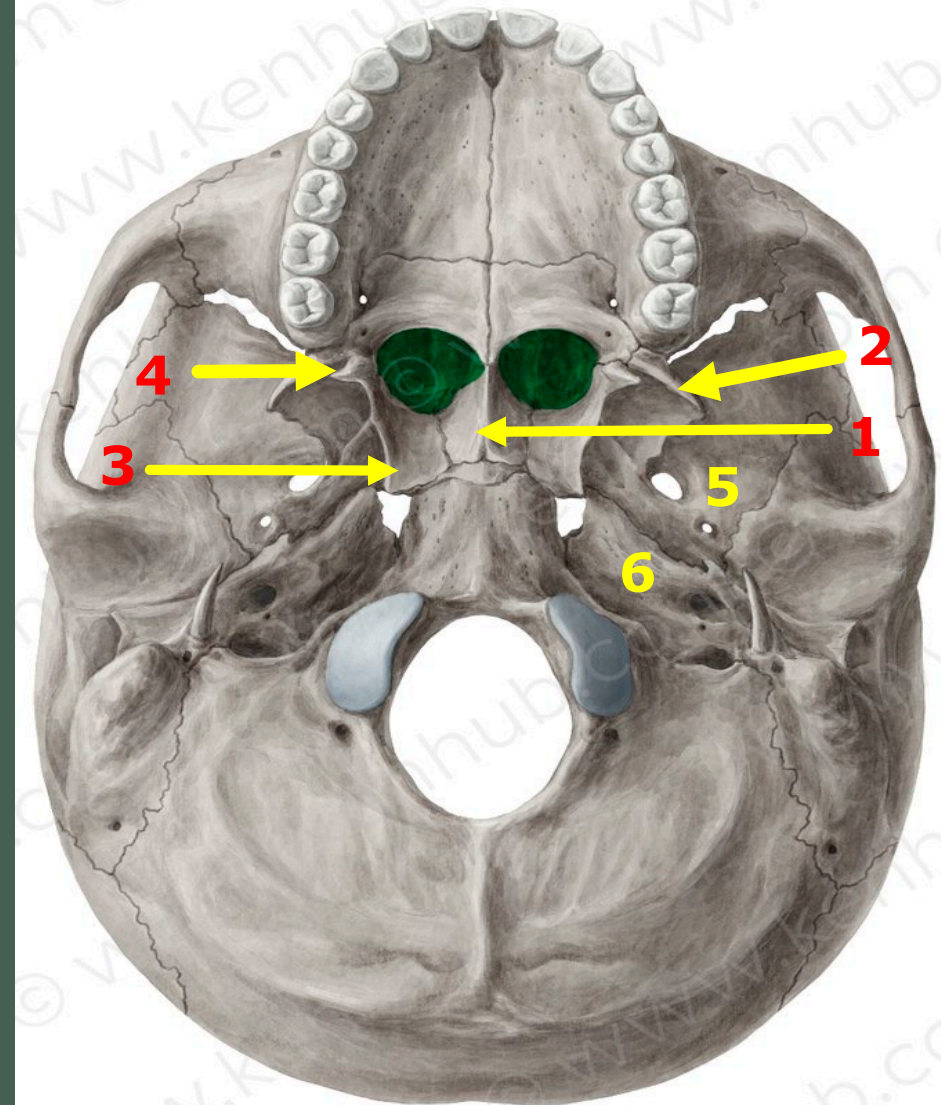
Check List Norma Basalis Externa

1. Palatine processes of maxillae
2. Horizontal plates of the palatine bones
3. Incisive fossa
4. Greater palatine foramina
5. Lesser palatine foramina
6. Posterior nasal spine
7. Mandibular fossa
8. Articular tubercle
9. Vomer
10. lateral pterygoid plate
11. Medial pterygoid plate
12. Pterygoid hamulus
13. Infratemporal surface of the greater wing of sphenoid
14. Petrous part of the temporal bone
15. Basilar part of occipital bone
16. Squamous part of occipital bone
17. Occipital condyle
18. Styloid process
19. Mastoid process
20. Foramen ovale
21. Foramen spinosum
22. Foramen lacerum
23. Carotid canal
24. Jugular Foramen
25. Stylomastoid foramen
26. Foramen magnum

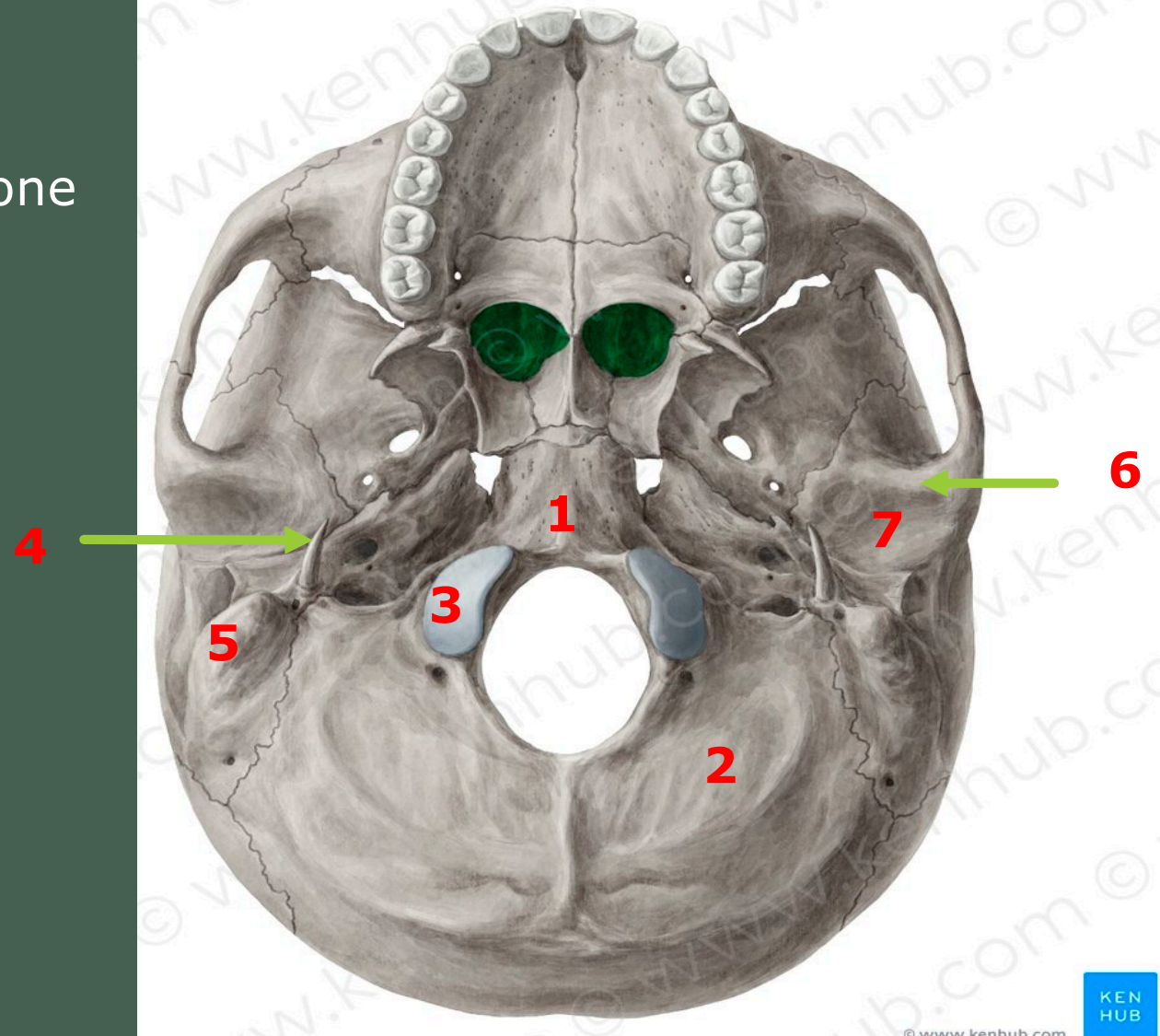
1. Palatine processes of maxillae
2. Horizontal plates of the palatine bones
3. Incisive fossa
4. Greater palatine foramina
5. Lesser palatine foramina
6. Posterior nasal spine



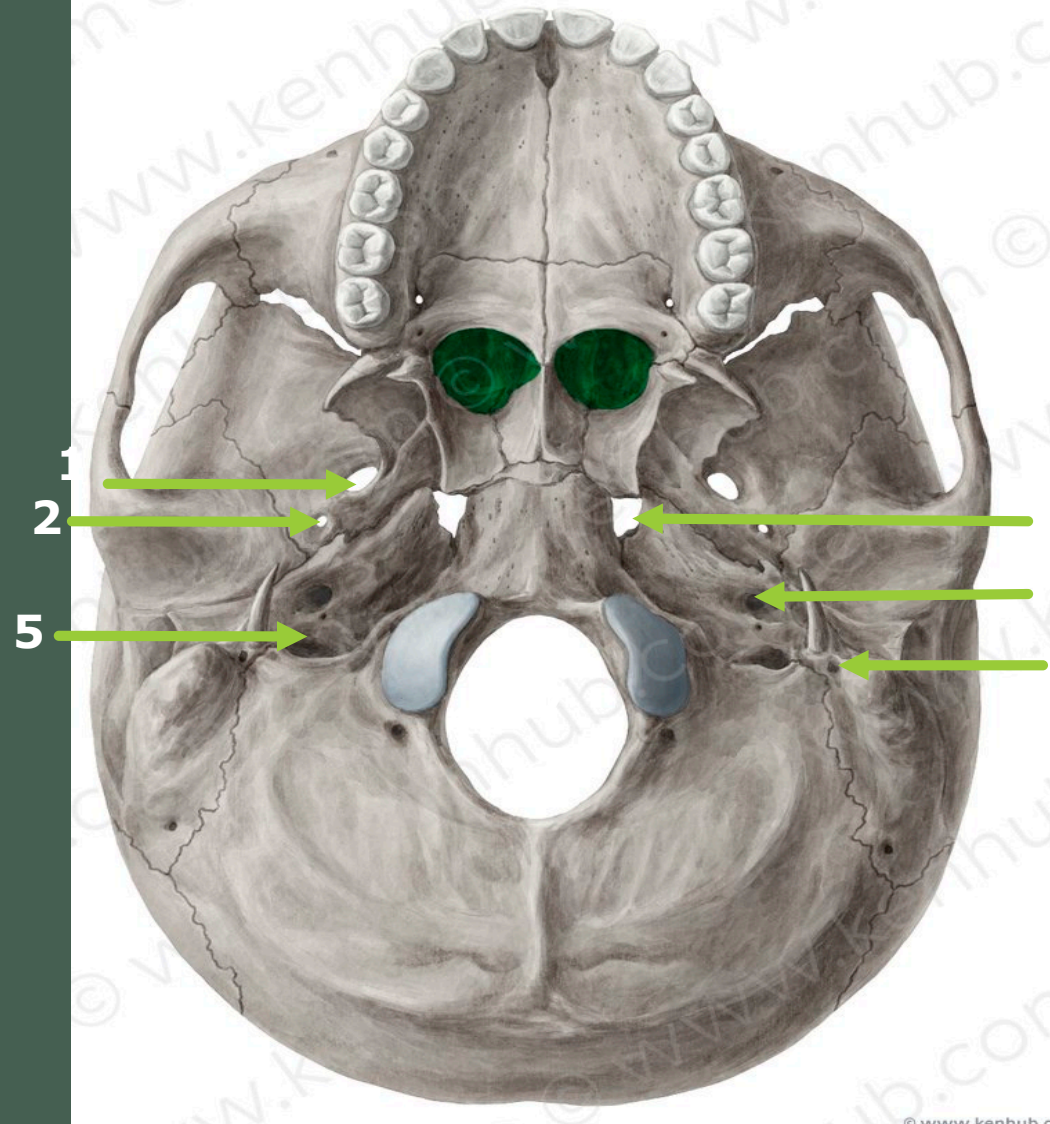
1. Vomer
2. lateral pterygoid plate
3. Medial pterygoid plate
4. Pterygoid hamulus
5. Infratemporal surface of the greater wing of sphenoid
6. Petrous part of the temporal bone



1. Basilar part of occipital bone
2. Squamous part of occipital bone
3. Occipital condyle
4. Styloid process
5. Mastoid process
6. Articular tubercle
7. Mandibular fossa



1. Foramen ovale
2. Foramen spinosum
3. Foramen lacerum
4. Carotid canal
5. Jugular Foramen
6. Stylomastoid foramen
(transmit facial nerve)
7. Foramen magnum

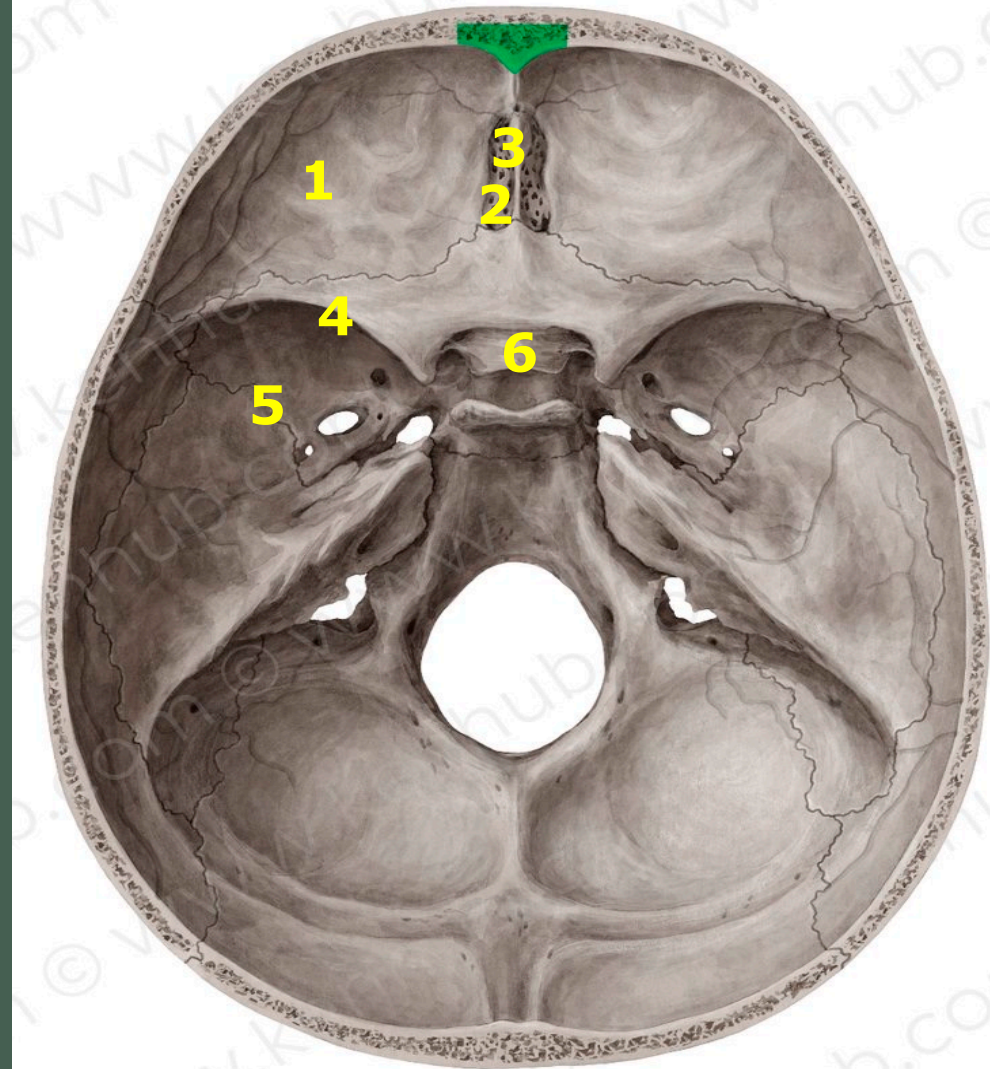


Norma Basalis Interna

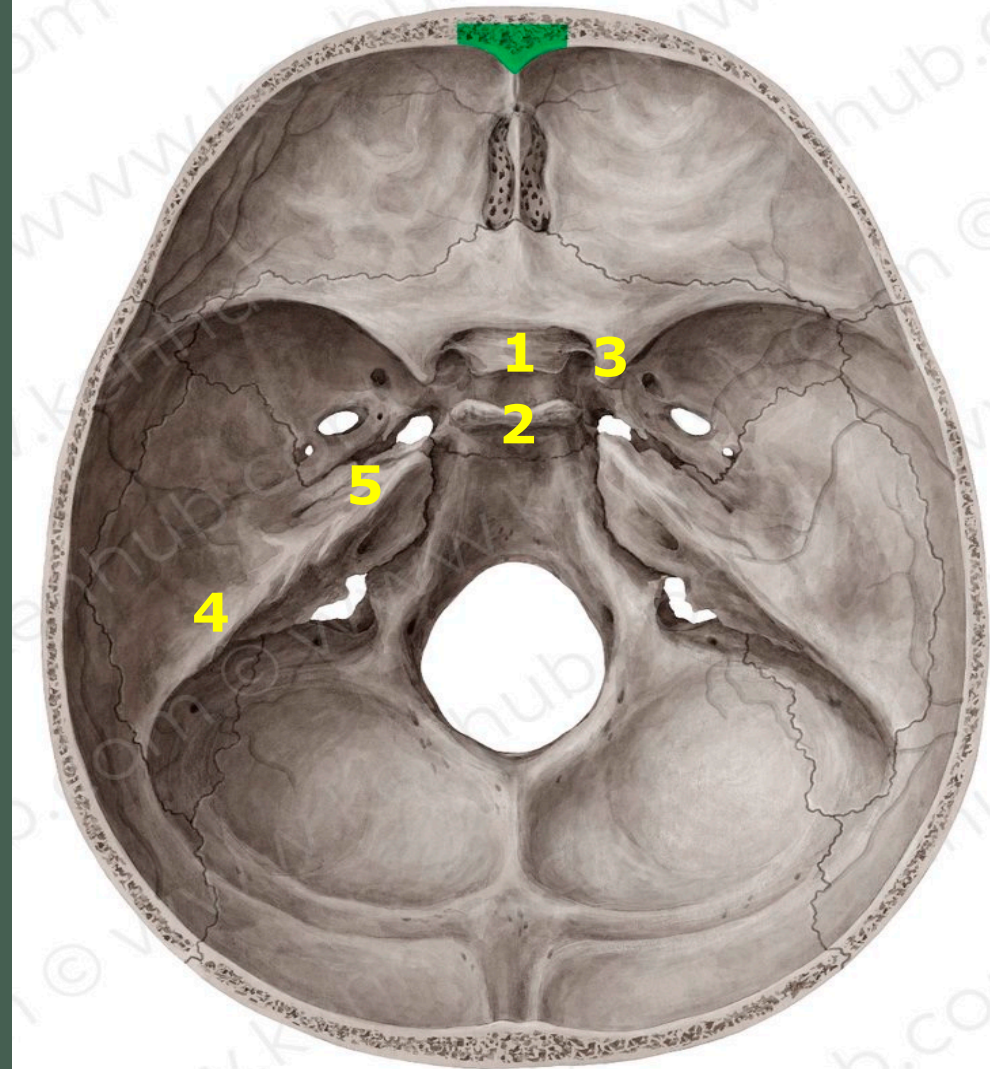
Check List Norma Basalis Interna

1. Orbital plates of the frontal bone
2. Cribriform plate of ethmoid
3. Crista galli
4. Lesser wing of sphenoid
5. Greater wing of sphenoid
6. sulcus chiasmaticus
7. Tuberculum sellae
8. Dorsum sellae
9. Hypophyseal fossa
10. Anterior clinoid process
11. Petrous part of temporal bone
12. Trigeminal impression
13. Sella turcica
14. Basilar part of occipital bone
15. Squamous part of occipital bone
16. Groove for transverse sinus
17. Groove for sigmoid sinus
18. Internal occipital protuberance
19. Internal occipital crest
19. Cribriform Plate of ethmoid
20. Optic canal
21. Superior orbital fissure
22. Foramen Rotundum
23. Internal acoustic meatus
24. Foramen Ovale
25. Foramen spinosum
26. Foramen Lacerum
27. Jugular Foramen
28. Hypoglossal Canal

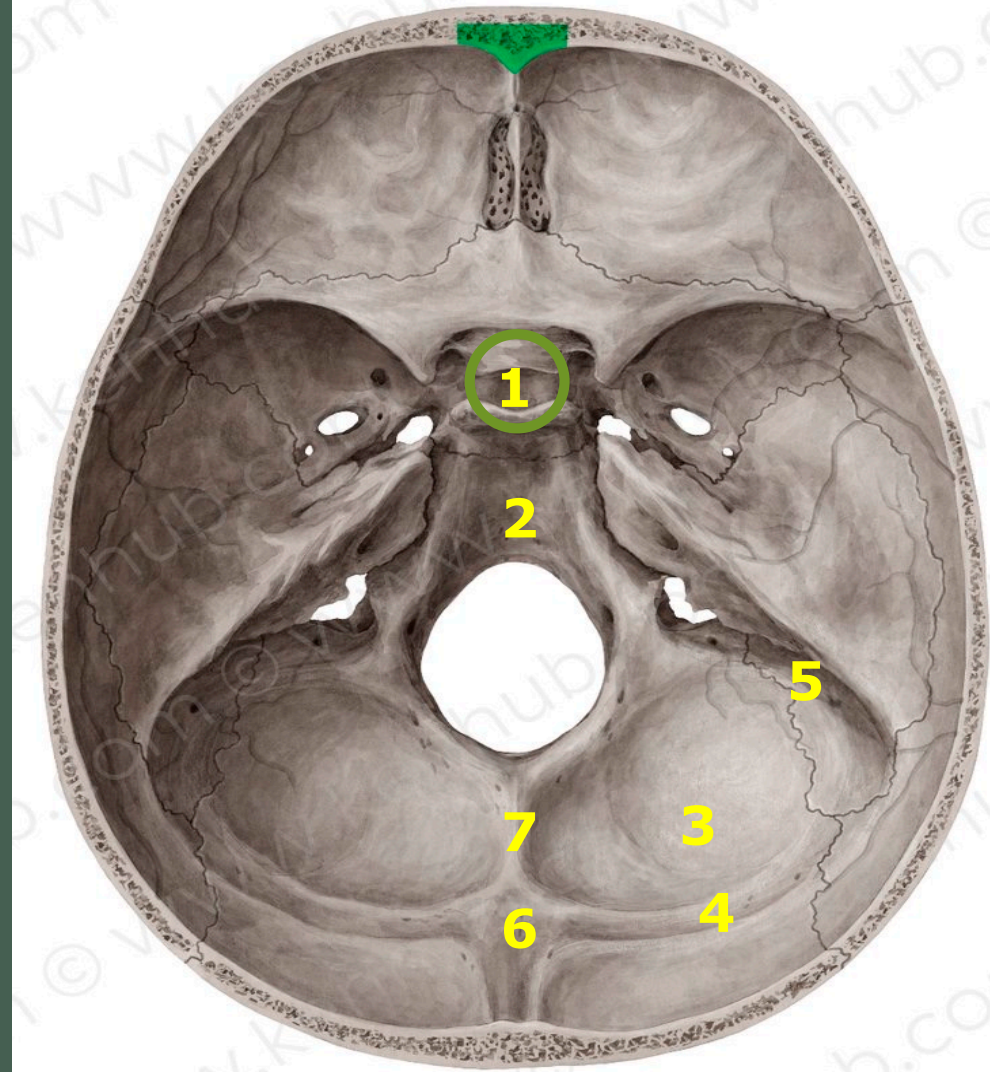
1. Orbital plates of the frontal bone
2. Cribriform plate of ethmoid
3. Crista galli
4. Lesser wing of sphenoid
5. Greater wing of sphenoid
6. Sulcus chiasmaticus



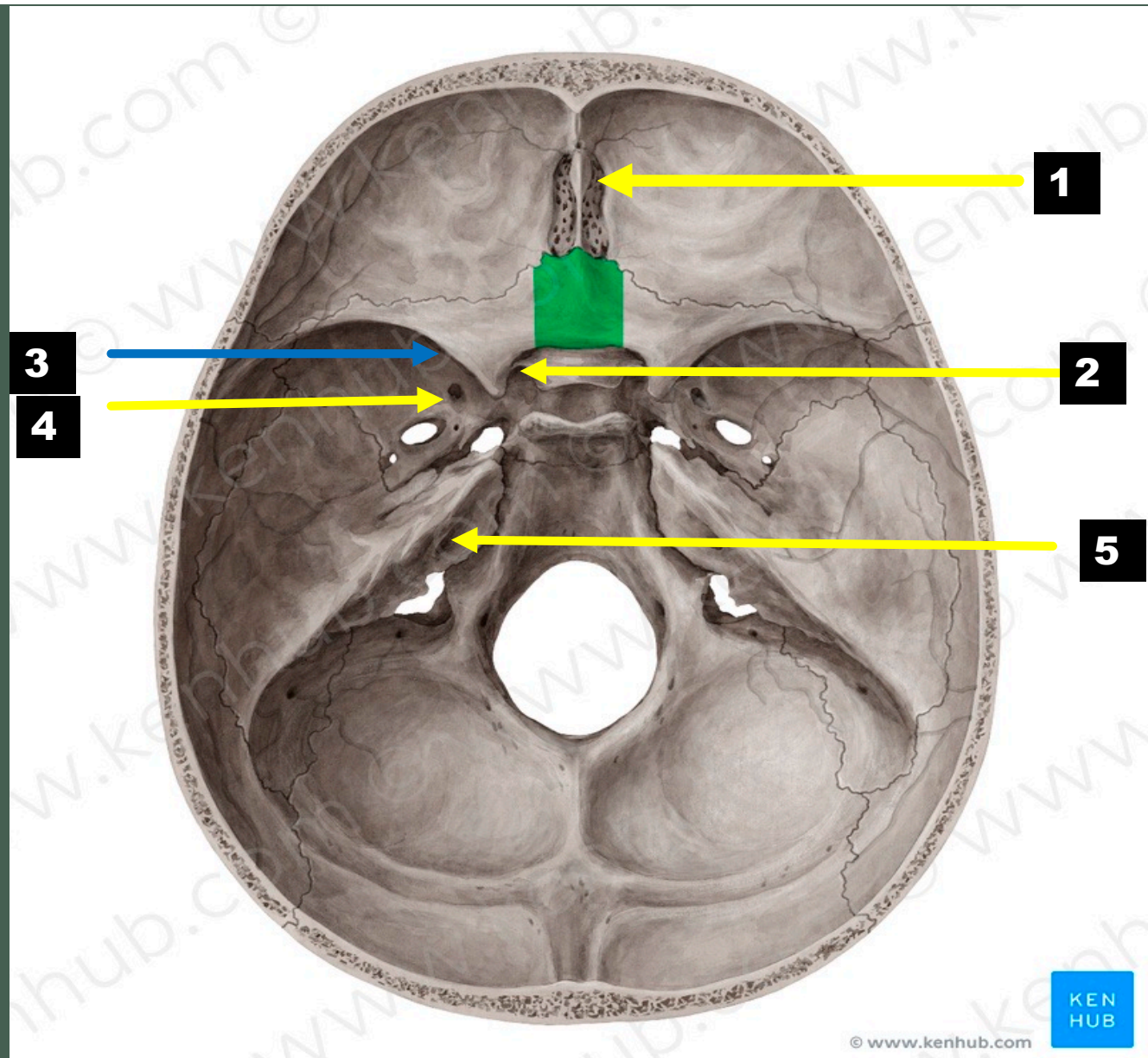
1. Tuberculum sellae
2. Dorsum sellae
and hypophyseal fossa in the
middle ALL this parts forms Sella
turcica
3. Anterior clinoid process
4. Petrous part of temporal bone
5. Trigeminal impression



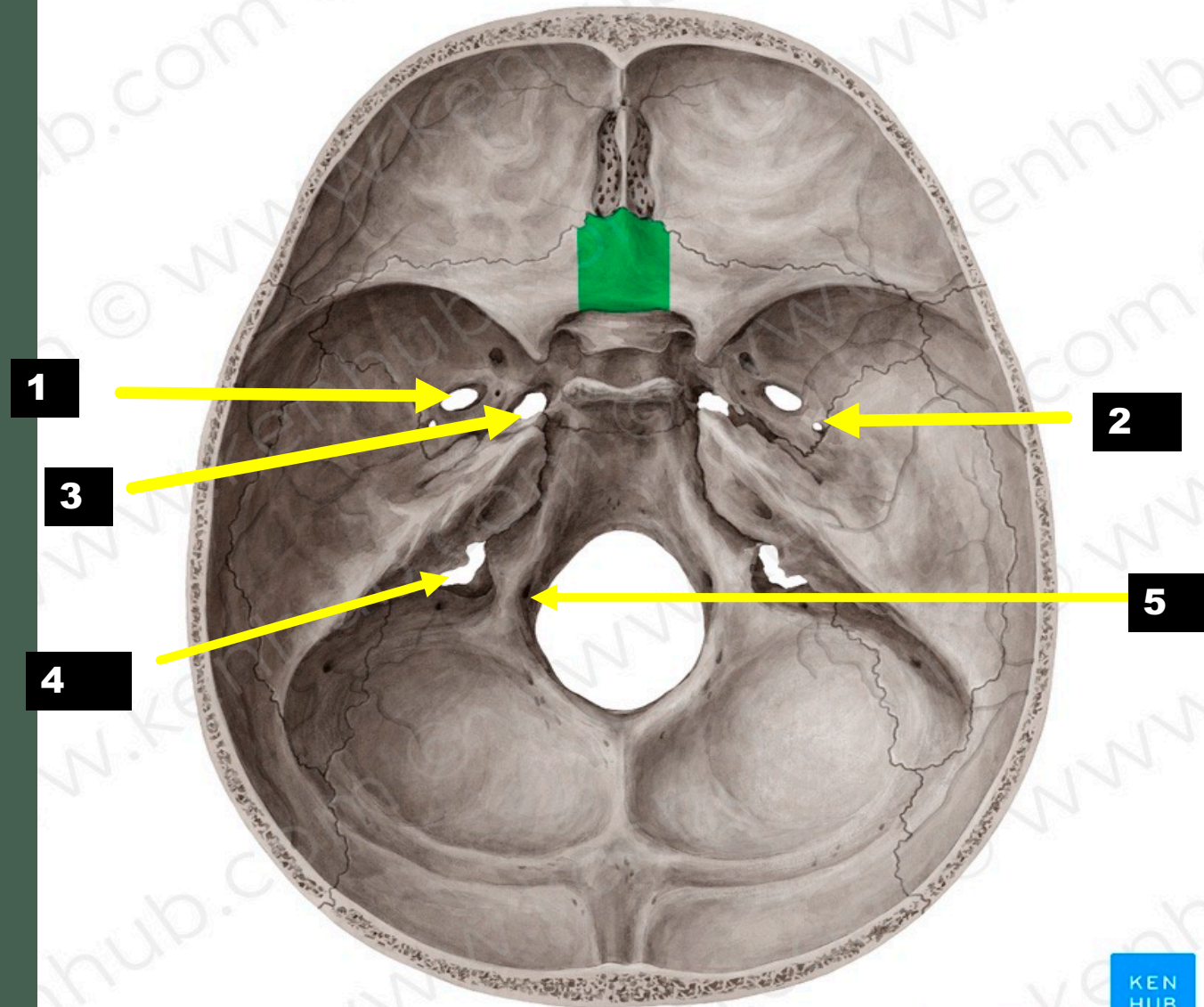
1. Sella turcica
2. Basilar part of occipital bone
3. Squamous part of occipital bone
4. Groove for transverse sinus
5. Groove for sigmoid sinus
6. Internal occipital protuberance
7. Internal occipital crest



- 1-Cribriform Plate of ethmoid
- 2-Optic canal
- 3-Superior orbital fissure
- 4-Foramen Rotundum
- 5-Internal acoustic meatus

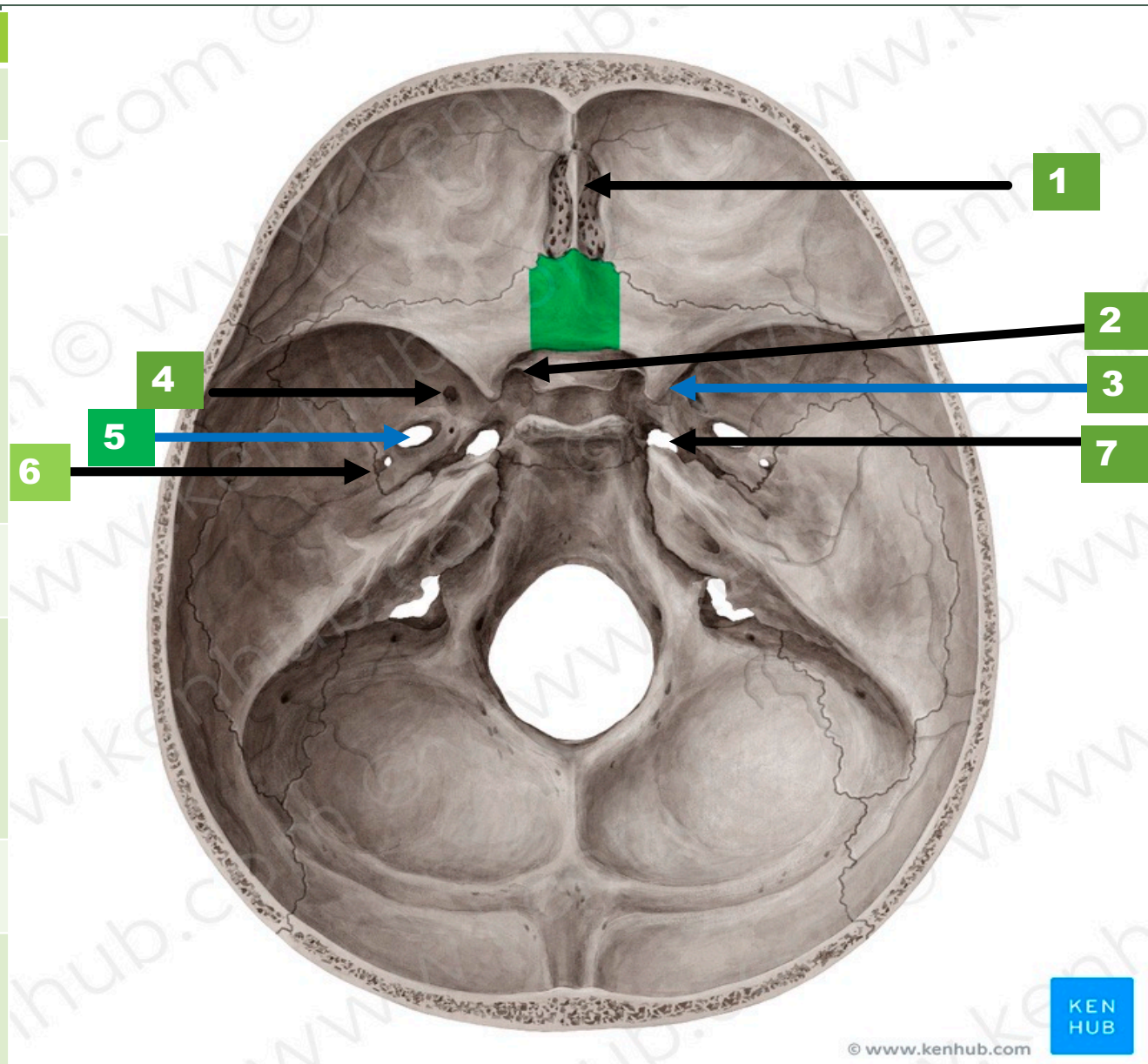


- 1-Foramen Ovale
- 2-Foramen spinosum
- 3-Foramen Lacerum
- 4-Jugular Foramen
- 5- Hypoglossal Canal

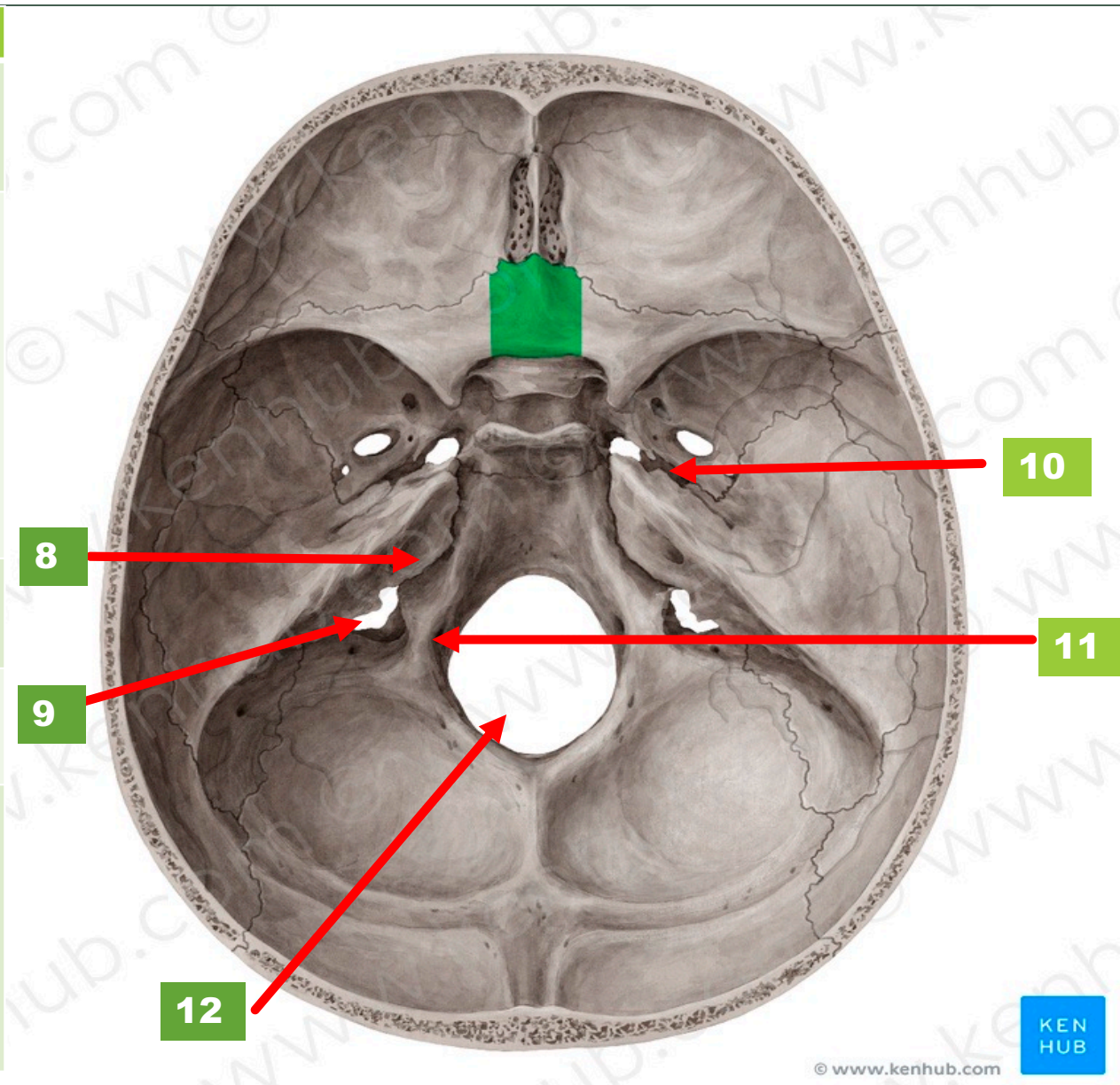


Skull Foramina

Foramina	Contents
1-Cribriform Plate	Olfactory N (I)
2-Optic canal	Optic nerve (II) and ophthalmic artery
3-Superior orbital fissure	Occulomotor (III), Trochlear (IV), Abducence (VI) and (lacrima, frontal and nasociliary) branches of ophthalmic nerves (V1)
4-Foramen Rotundum	Maxillary nerve
5-Foramen Ovale	MALE Mandibular nerve V3 Accessory meningeal A Lesser petrosal nerve Emissary vein
6-Foramen spinosum	Middle meningeal artery
7-Foramen Lacerum	Nerve and Artery of pterygoid canal and emissary vein



Foramina	Contents
8-Internal acoustic meatus	Facial nerve (VII), vestibulocochlear nerve (VIII)
9-Jugular Foramen	Inferior petrosal sinus (Anterior) Glossopharyngeal nerve (IX), vagus nerve (X), accessory nerve (XI) (Intermediate) Sigmoid sinus (Posterior)
10- Carotid canal	Internal carotid artery
11-Hypoglossal Canal	Hypoglossal Nerve (XII)
12-Foramen magnum	spinal cord and meninges; vertebral arteries; anterior and posterior spinal arteries; dural veins; spinal roots of the accessory nerve



Thank
you

