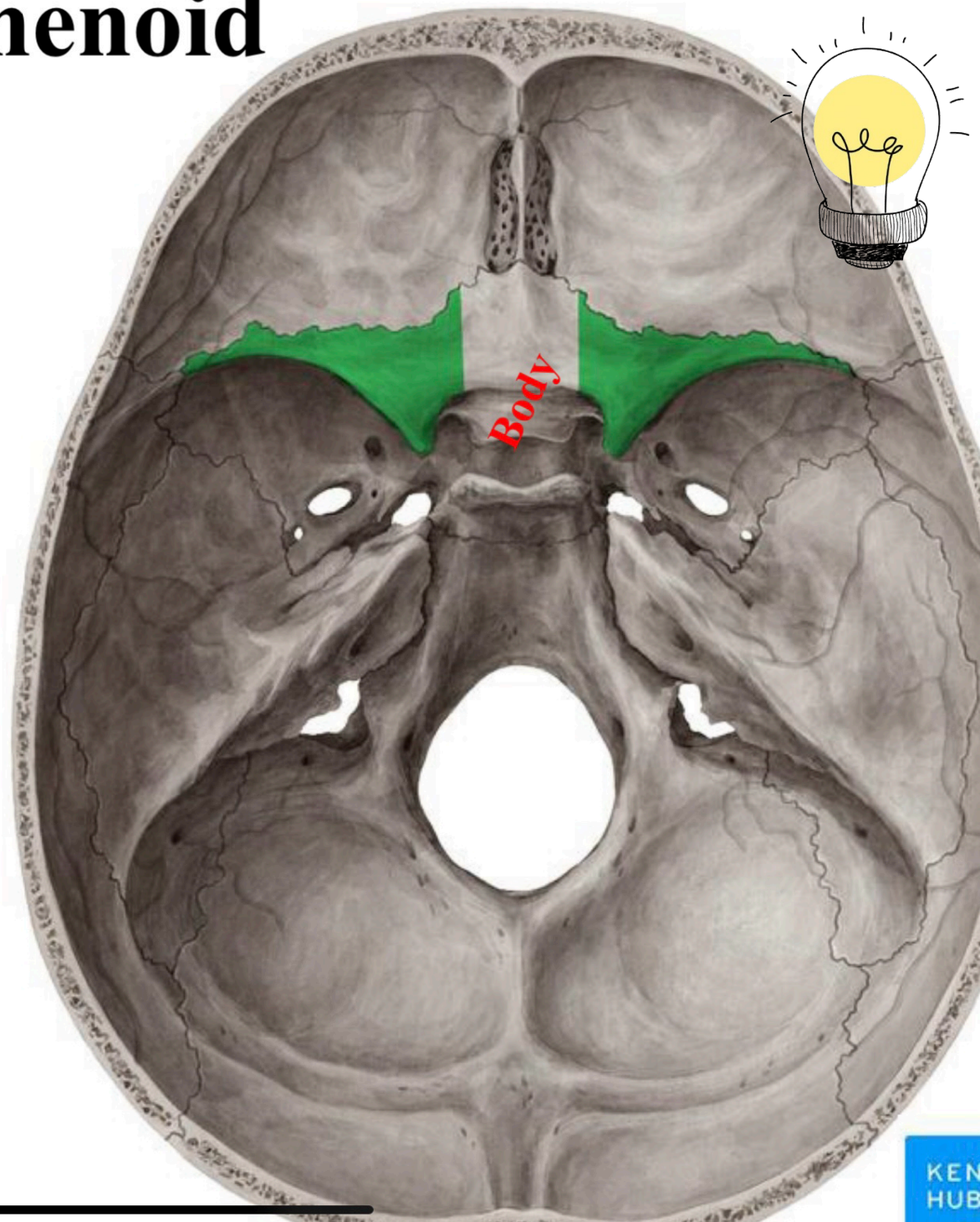


Lesser wing of sphenoid



Done by Noor Marzooq 🎀

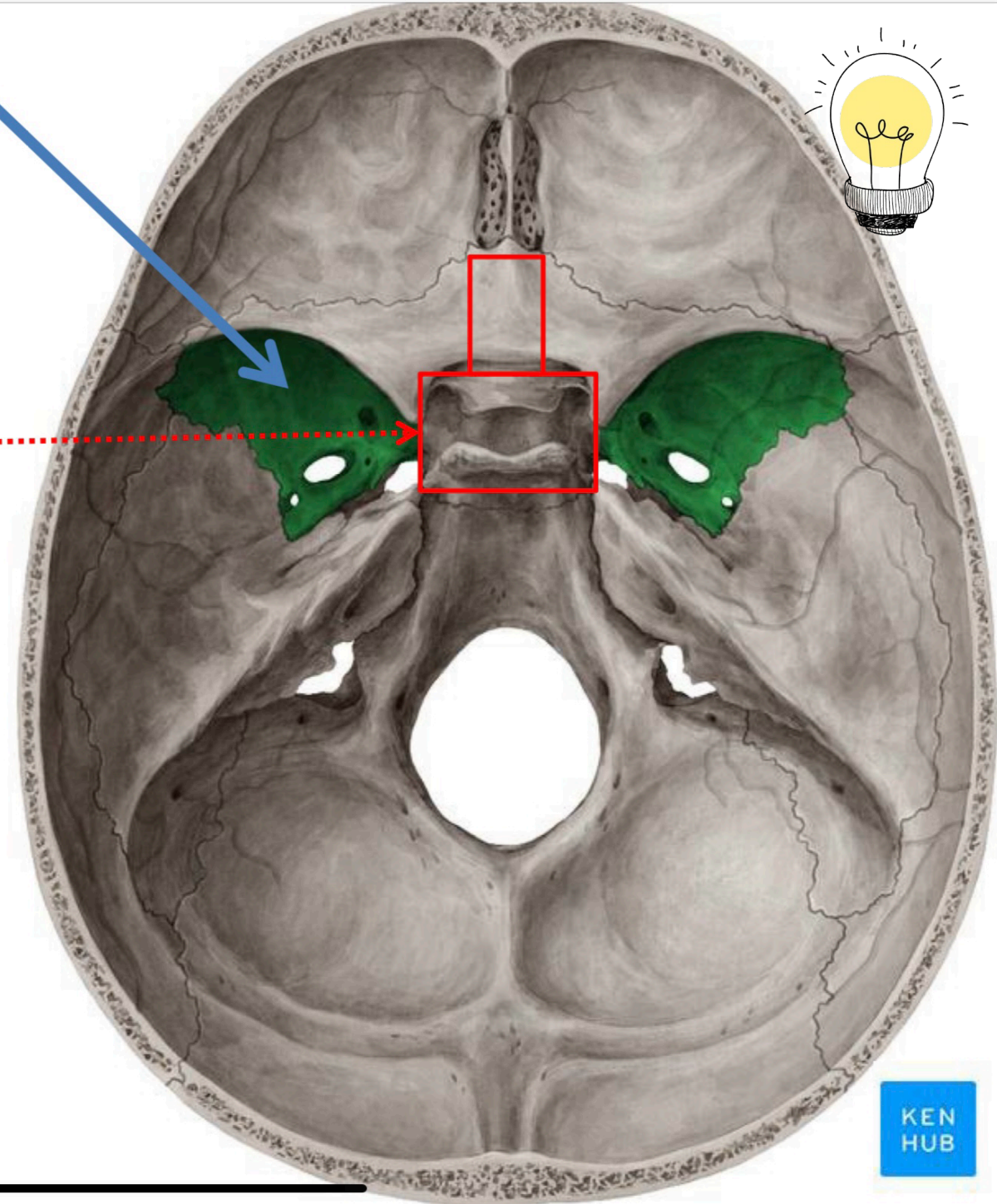


Greater wing of the sphenoid

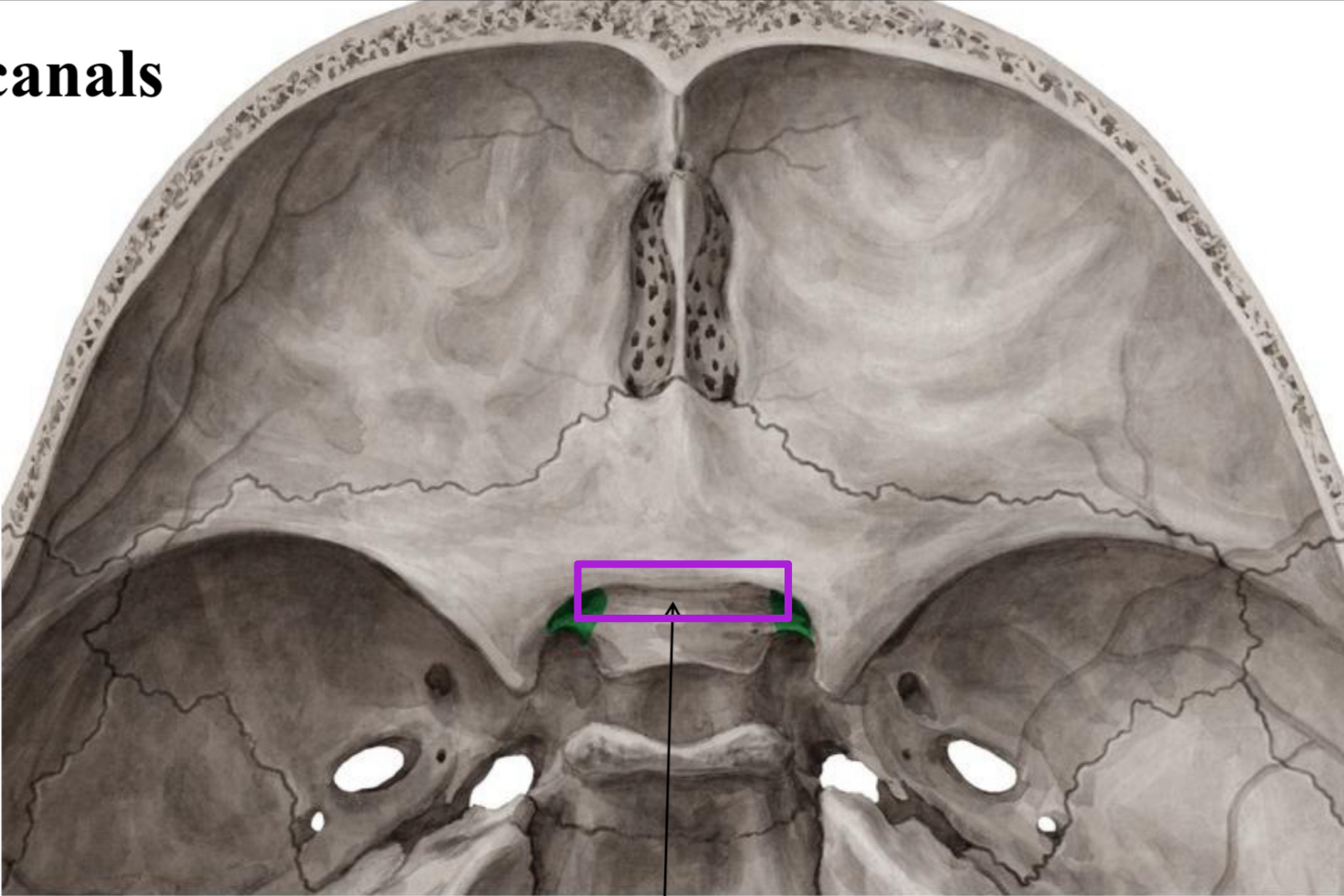
20 of 76



Body of sphenoid



Optic canals



**Sulcus chiasmaticus
(chiasmatic groove)**

Is the groove between the optic canals

© www.kenhub.com



The median part of the middle cranial fossa is formed by the **body of the sphenoid**

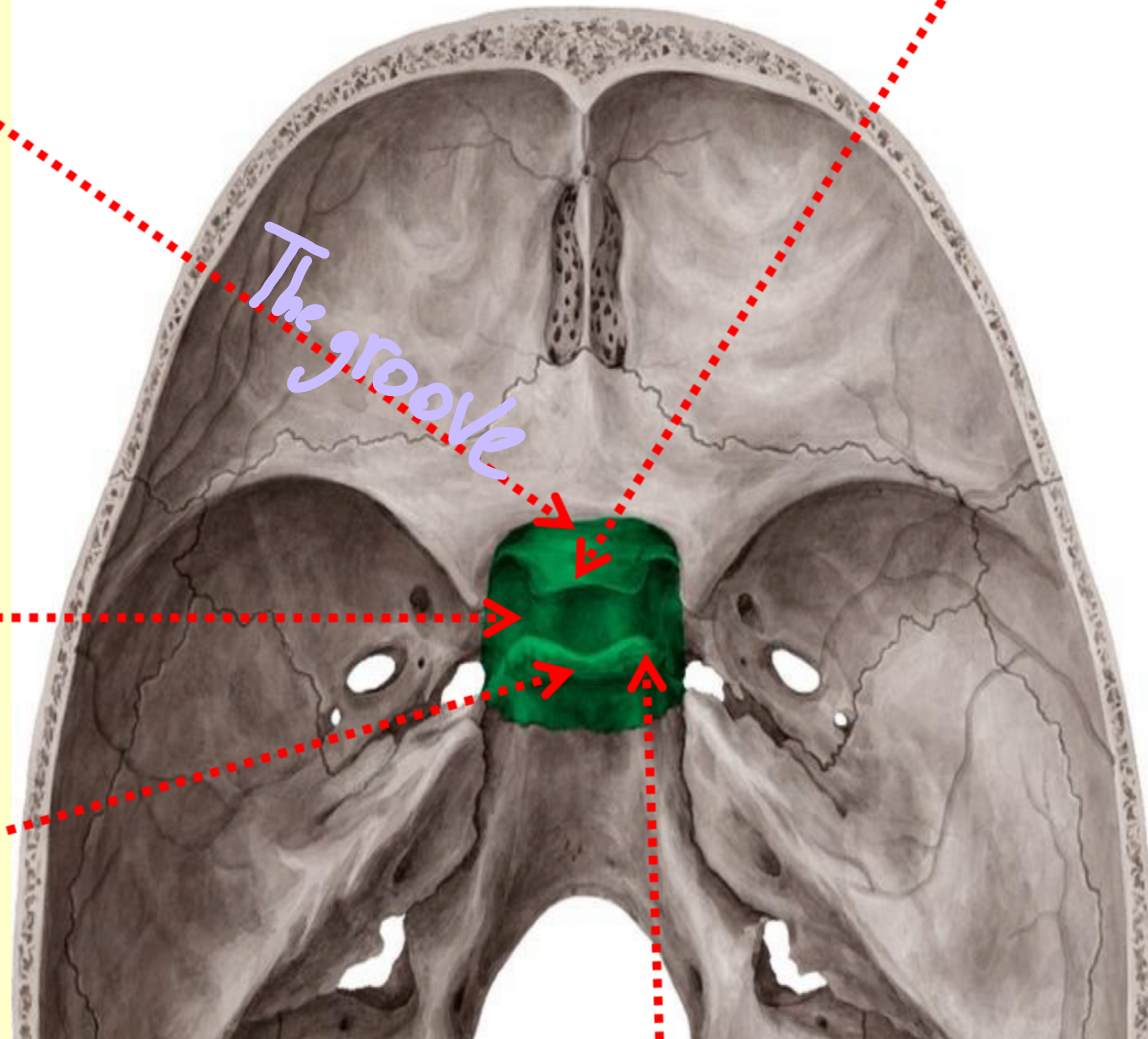
Sulcus chiasmaticus (chiasmatic groove) is related to the optic chiasma and leads laterally to the **Optic canal**

On the superior aspect of the body is a depression called the **Sella turcica** which contains the pituitary gland (**hypophyseal fossa**)

Posterior to the hypophyseal fossa is the **Dorsum sellae**

The superior angles of the dorsum sellae have two tubercles called the **Posterior clinoid processes**

In front of the hypophyseal fossa is the **Tuberculum sellae**



Turkish saddle

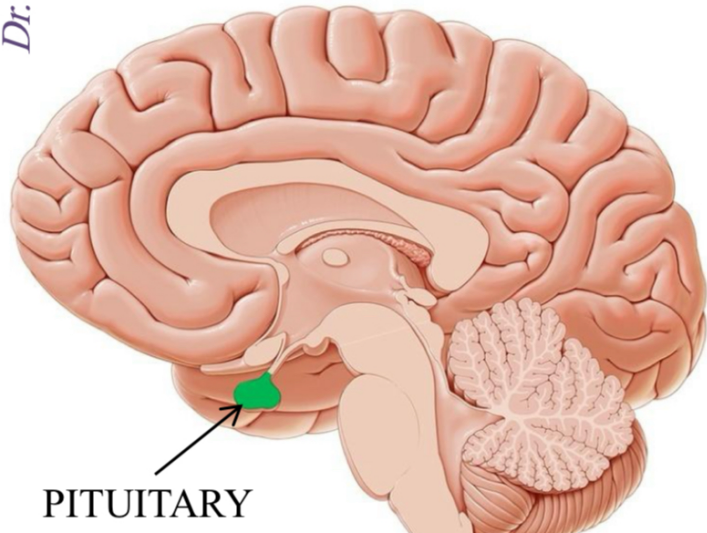
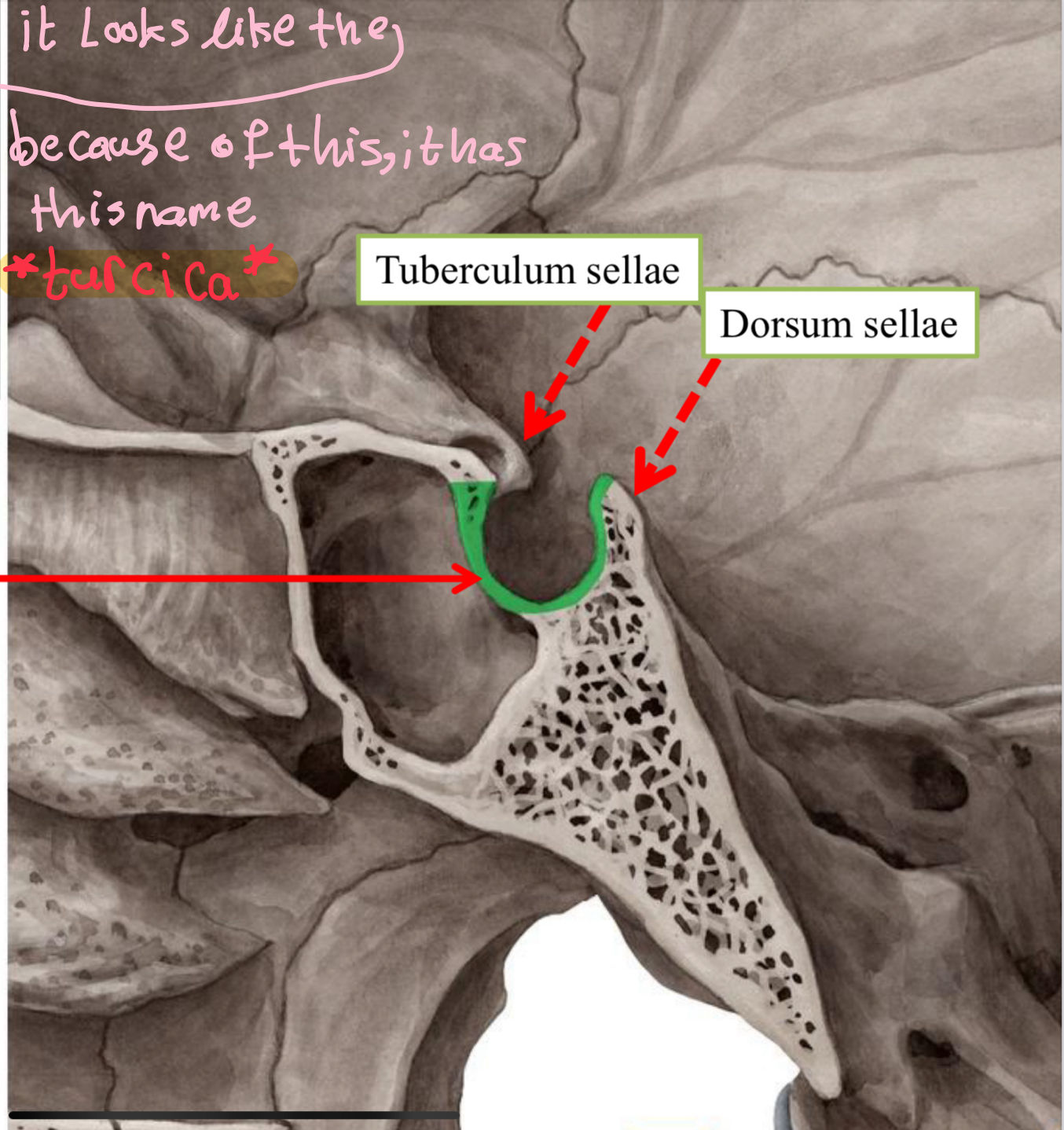


it looks like the
because of this, it has
this name
turcica

Tuberculum sellae

Dorsum sellae

The **sella turcica**
(hypophyseal fossa) which
CONTAINS THE
PITUITARY GLAND



Dr. Heba Kalbouneh