

The University of Jordan
Faculty Of Medicine



Head and Neck Practical

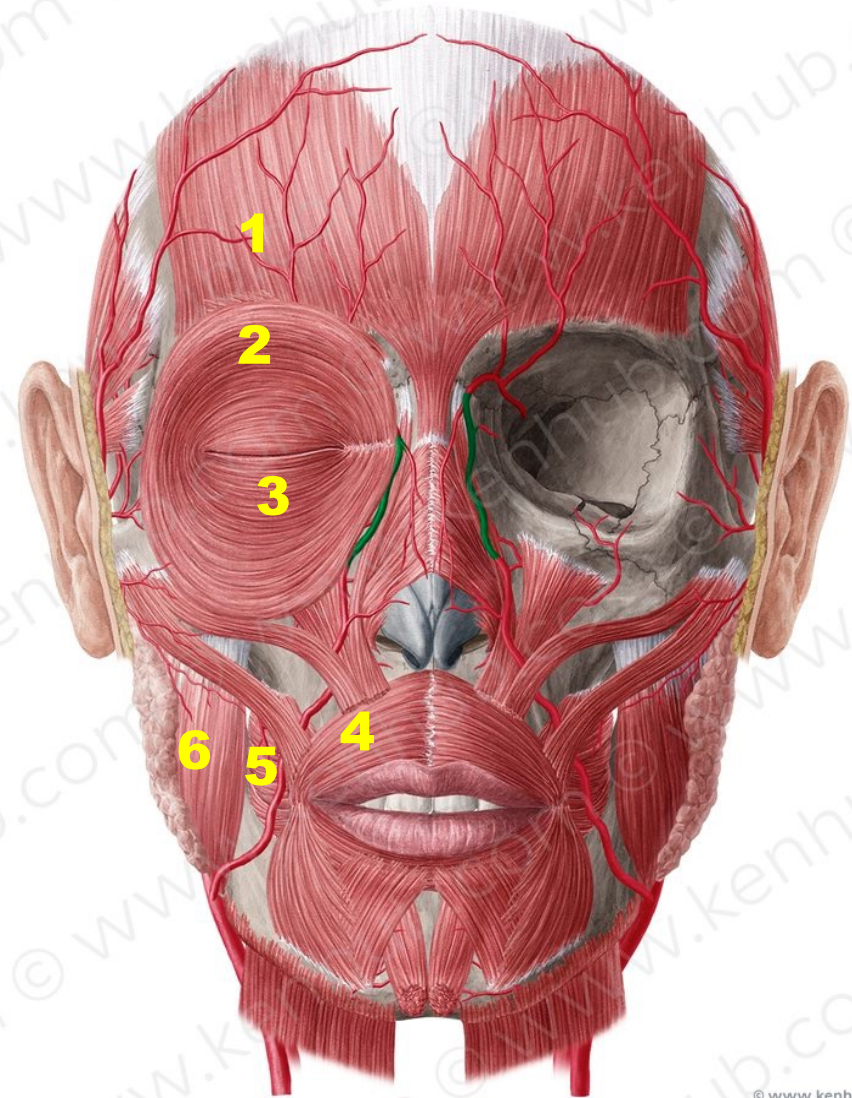
Dr. Ahmed Salman

Associate professor of anatomy & embryology

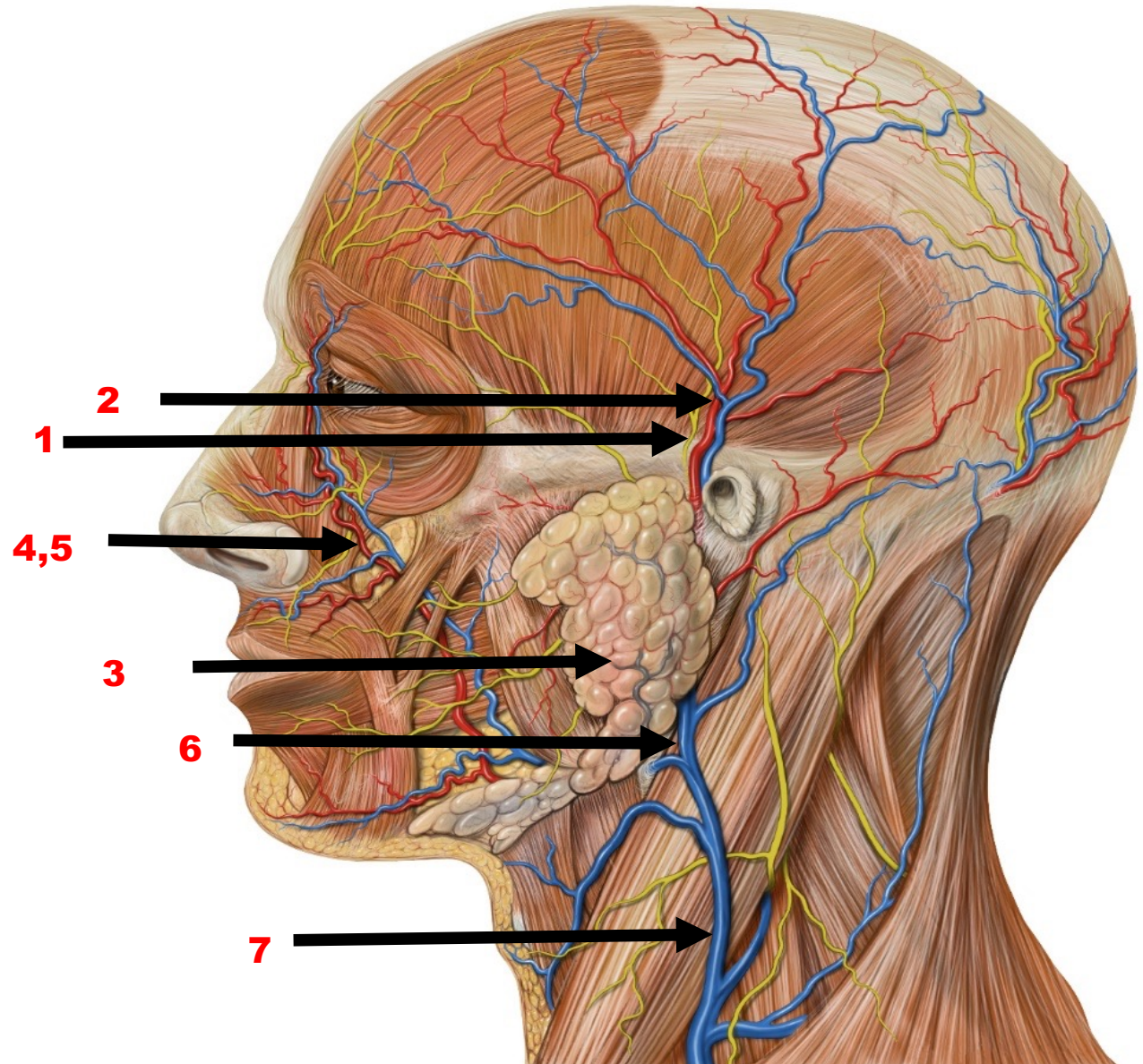
Face check List

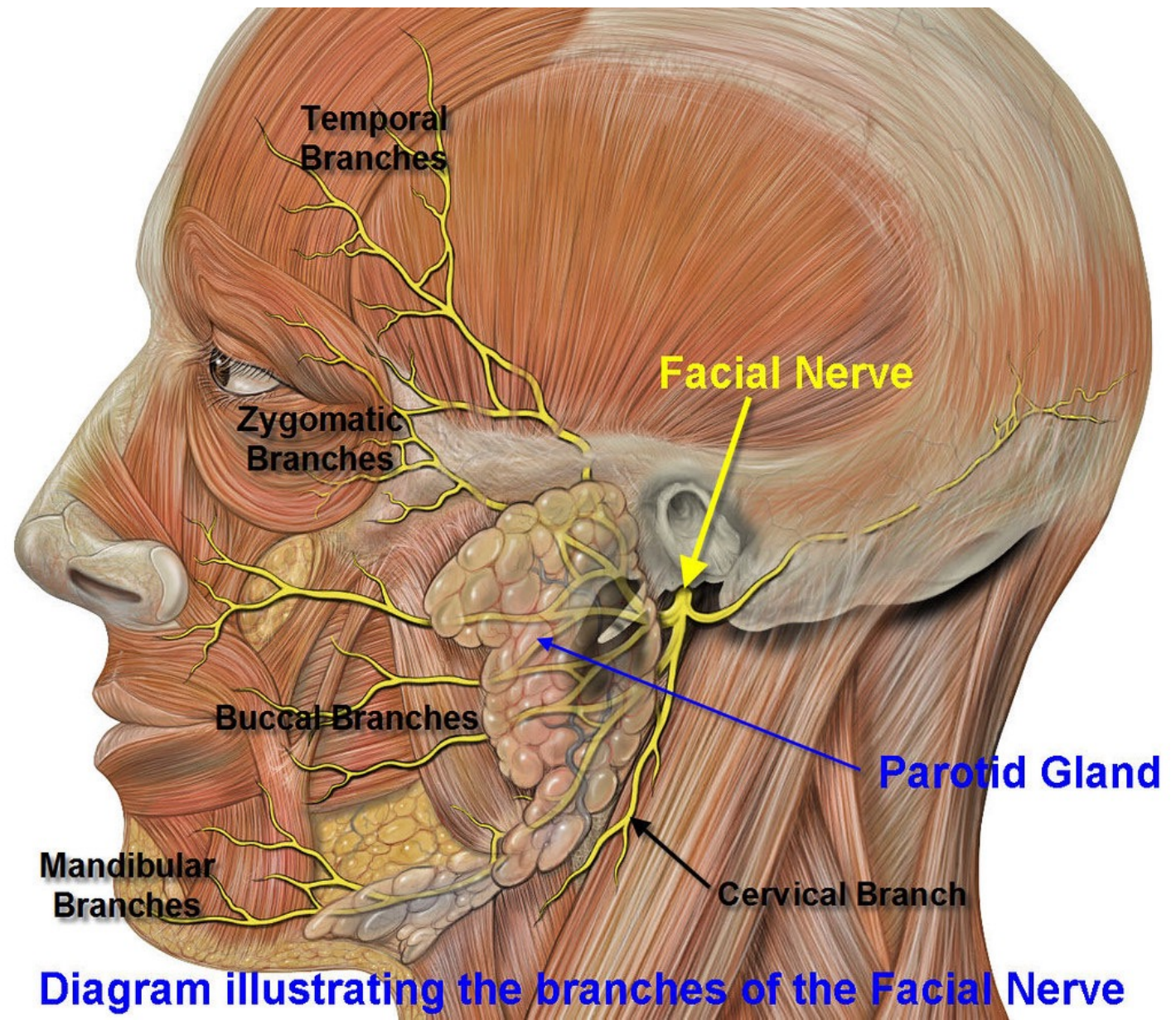
1. Auriculotemporal nerve
2. Superficial temporal vessels
3. Parotid gland
4. Parotid duct
5. Facial artery
6. Facial vein
7. Retromandibular vein
8. External Jugular vein
9. Temporal ,zygomatic ,buccal ,mandibular and cervical branches of facial nerve.
10. Occipitofrontalis ,Orbicularis oculi ,Orbicularis oris and Buccinators
11. Temporalis ,Masseter ,Lateral Pterygoid , Medial Pterygoid

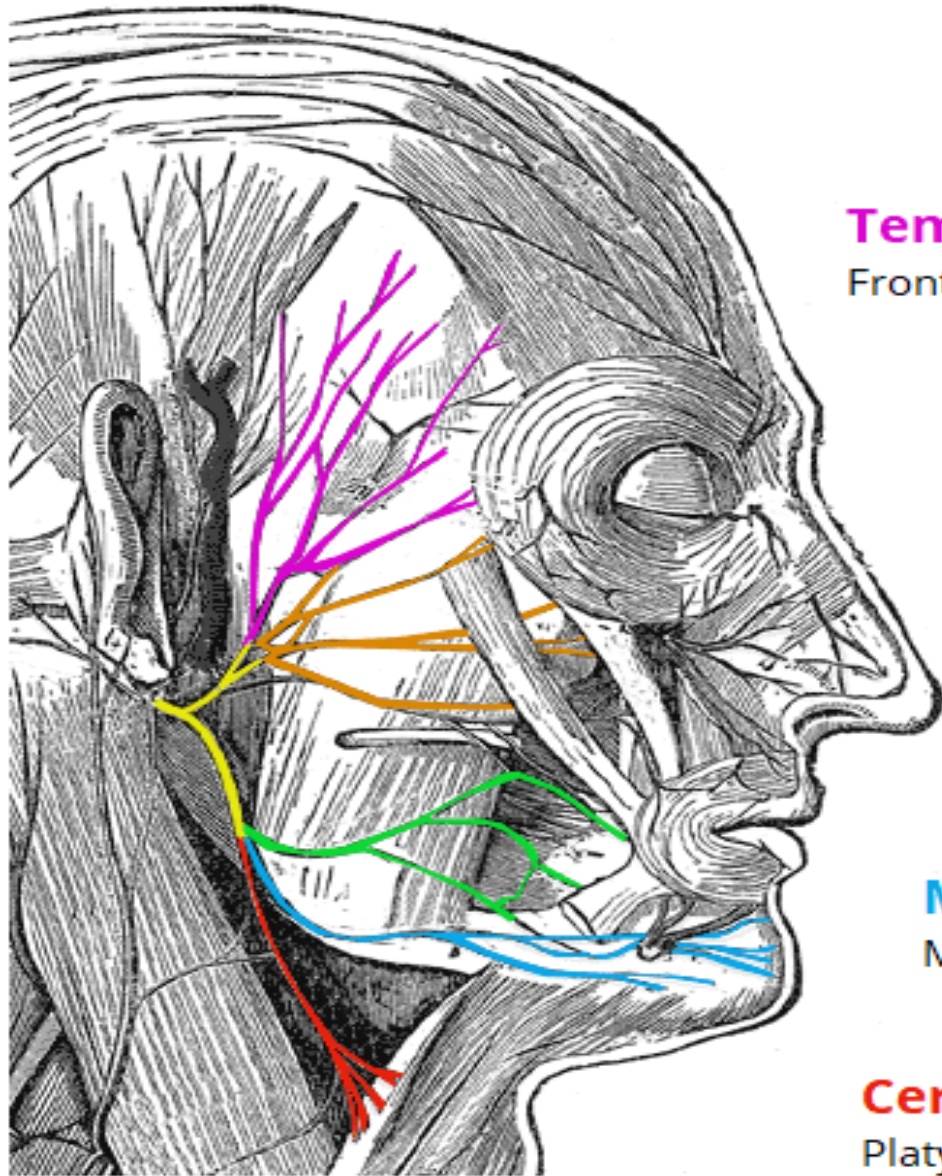
1. Frontal belly of occipitofrontalis
2. Orbicularis oculi (Orbital part)
3. Orbicularis oculi (Palpebral part)
4. Orbicularis oris
5. Buccinators
6. Masseter



1. Auriculotemporal nerve
2. Superficial temporal vessels
3. Parotid gland
4. Facial artery
5. Facial vein
6. Retromandibular vein
7. External Jugular vein







Temporal branches

Frontalis, orbicularis oculi, corrugator supercilii

Zygomatic branches

Orbicularis oculi

Buccal branches

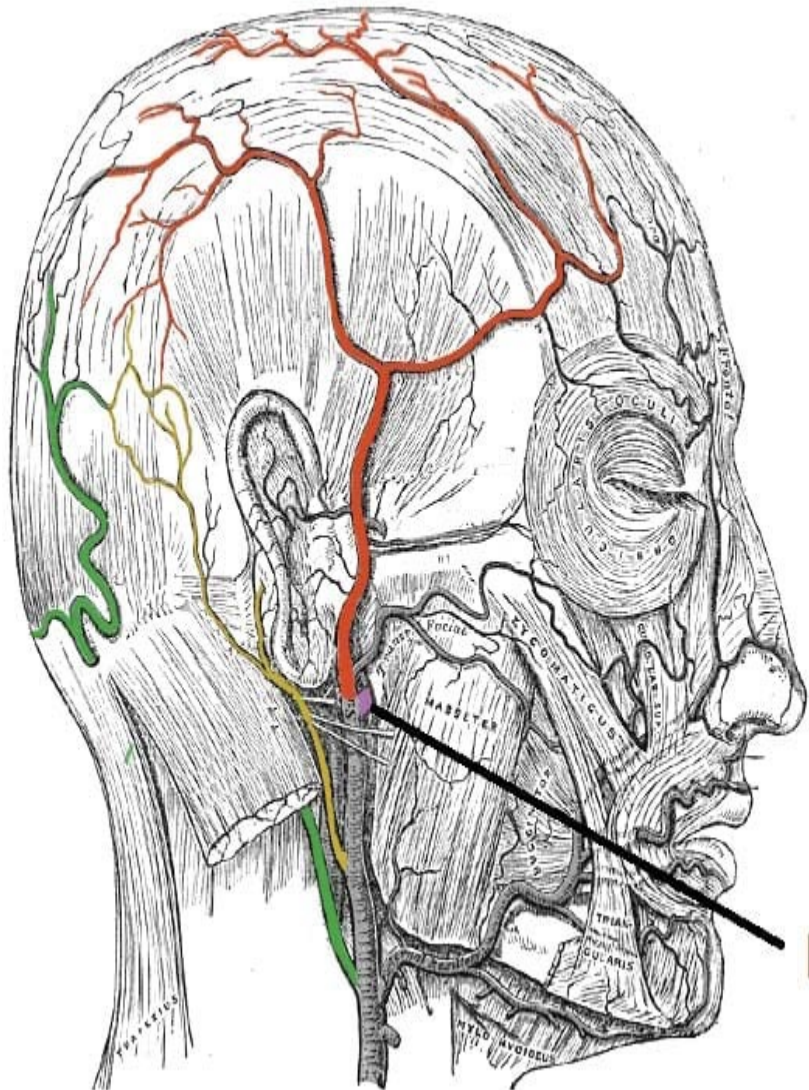
Orbicularis oris, buccinator, zygomaticus

Marginal mandibular branches

Mentalis, depressor labii inferioris, depressor anguli oris

Cervical branches

Platysma

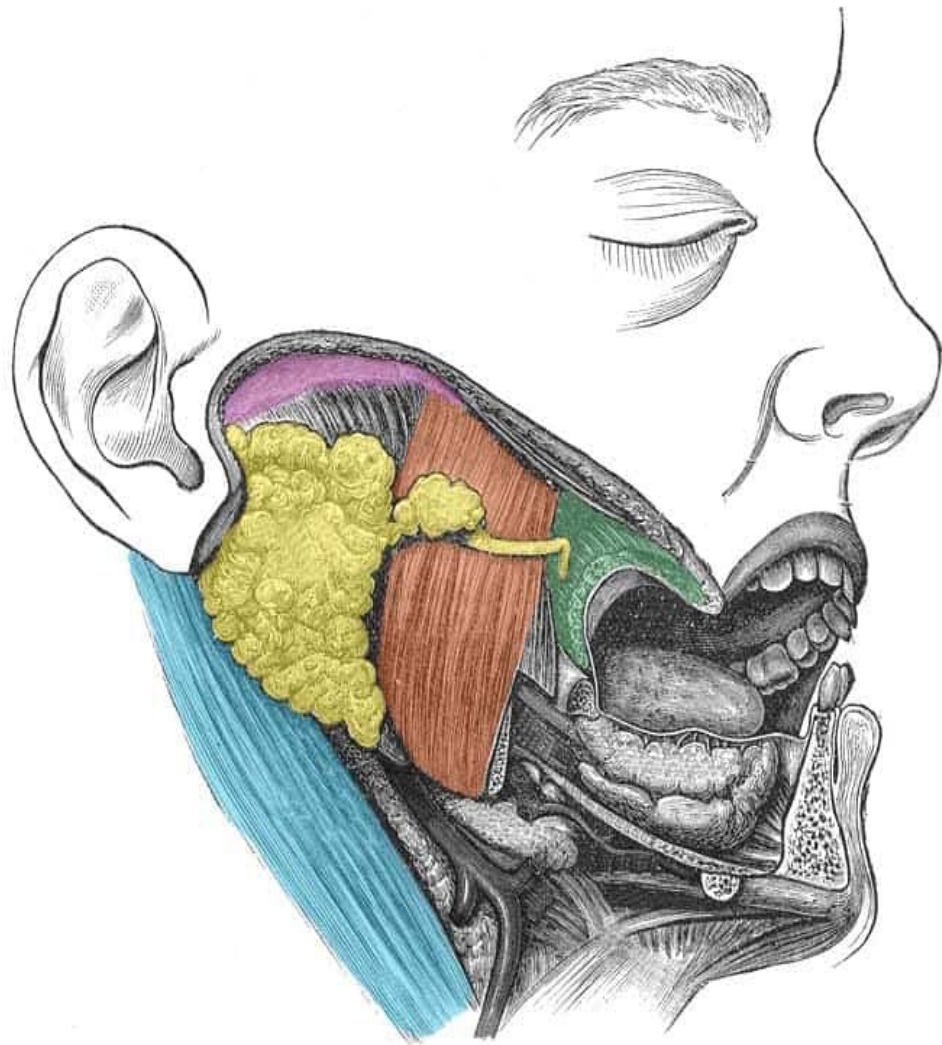


 **Superficial Temporal**

 **Occipital**

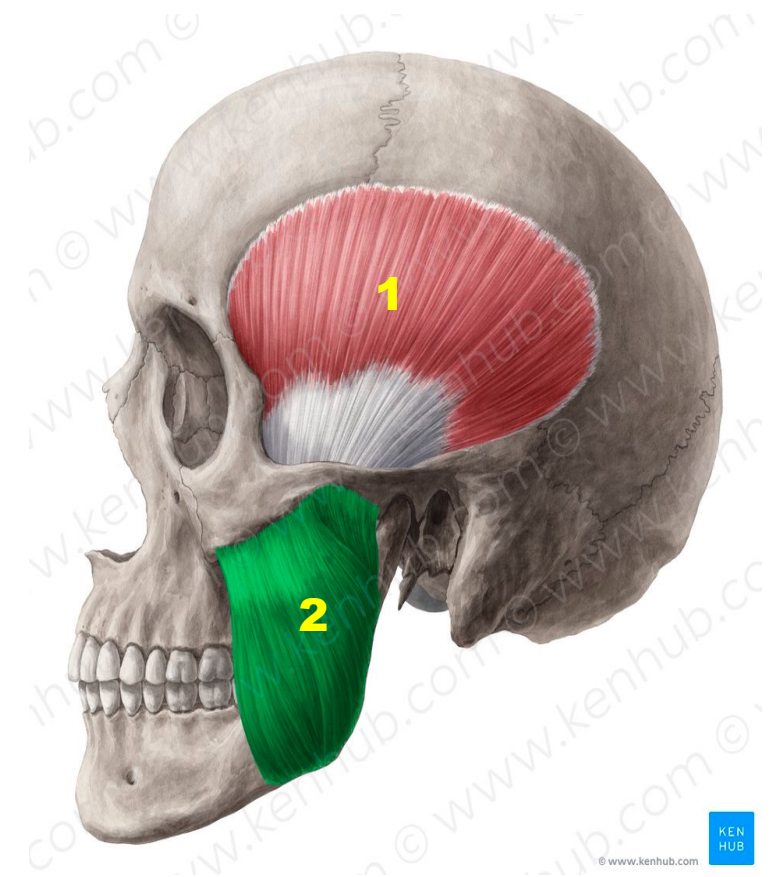
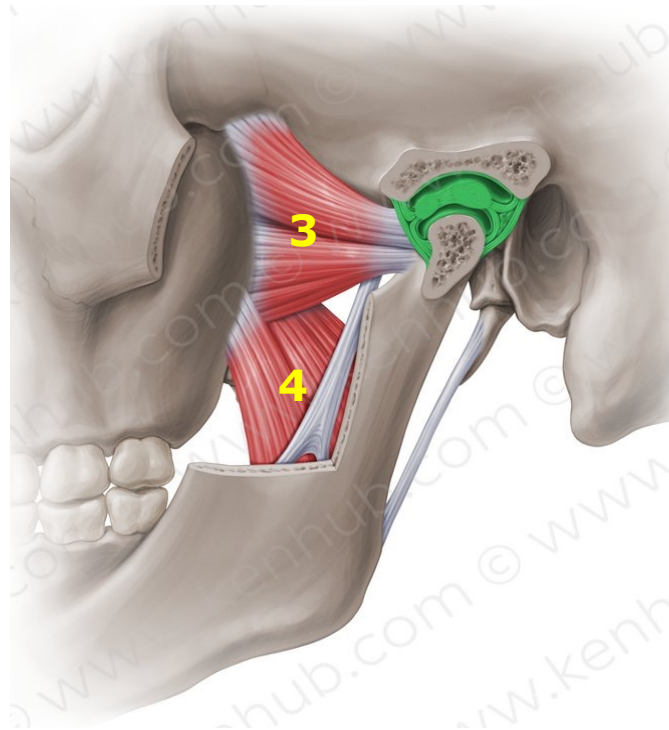
 **Posterior auricular**

 Maxillary artery



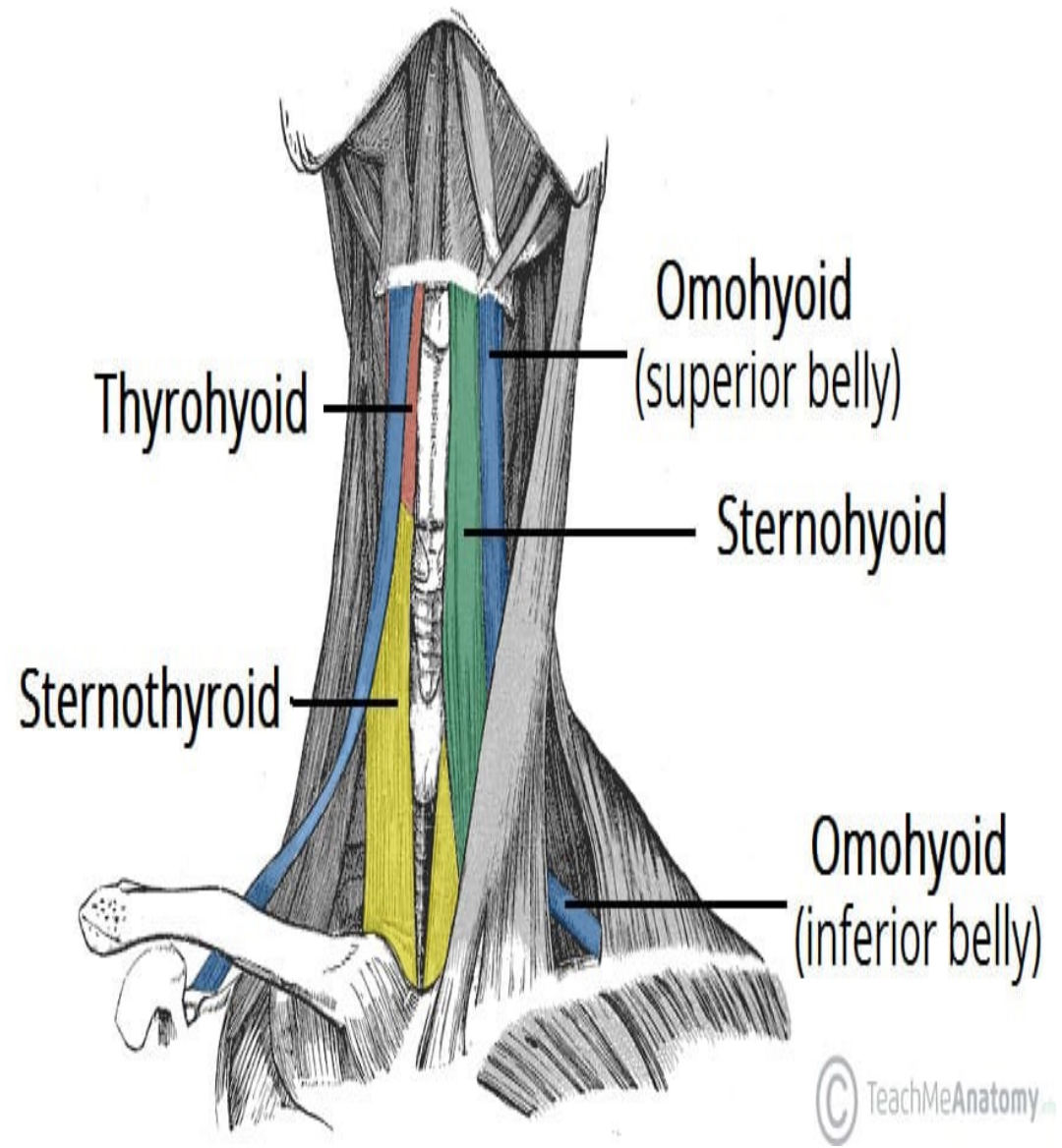
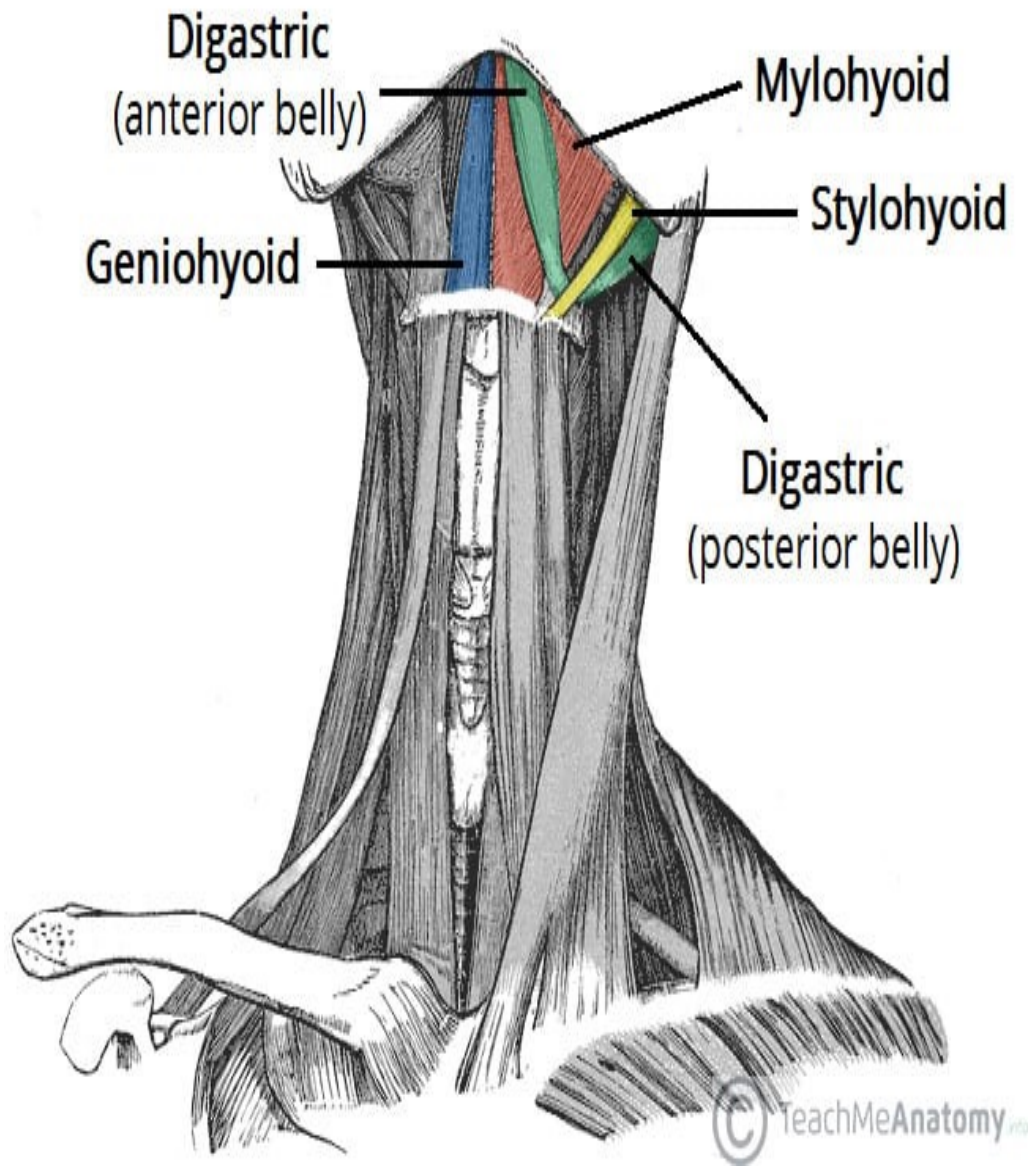
-  **Parotid gland and duct**
-  **Zygomatic arch (superior border)**
-  **Sternocleidomastoid (posterior border)**
-  **Masseter (anterior border)**
-  **Buccinator**

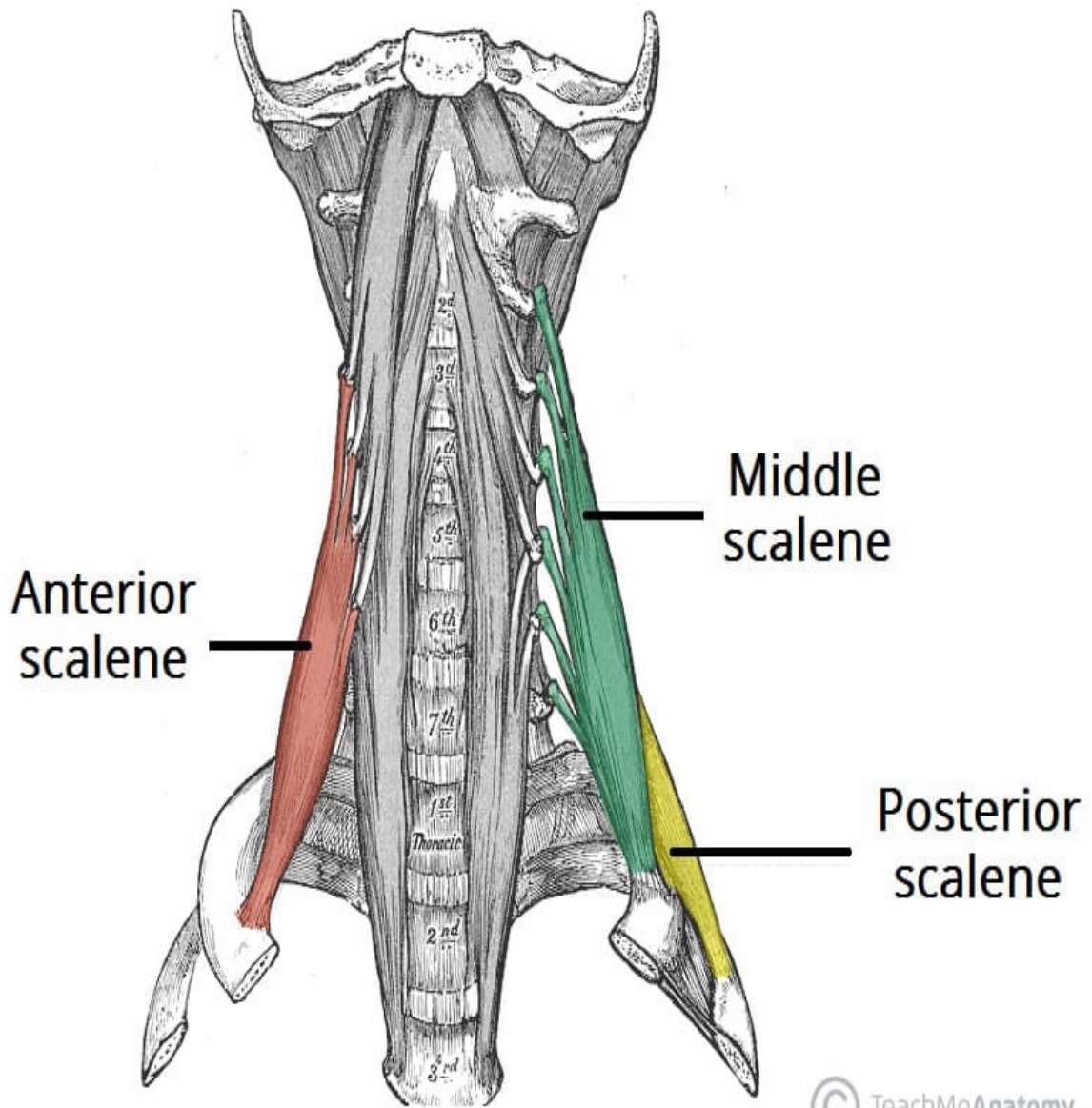
1. Temporalis
2. Masseter
3. Lateral Pterygoid
4. Medial Pterygoid



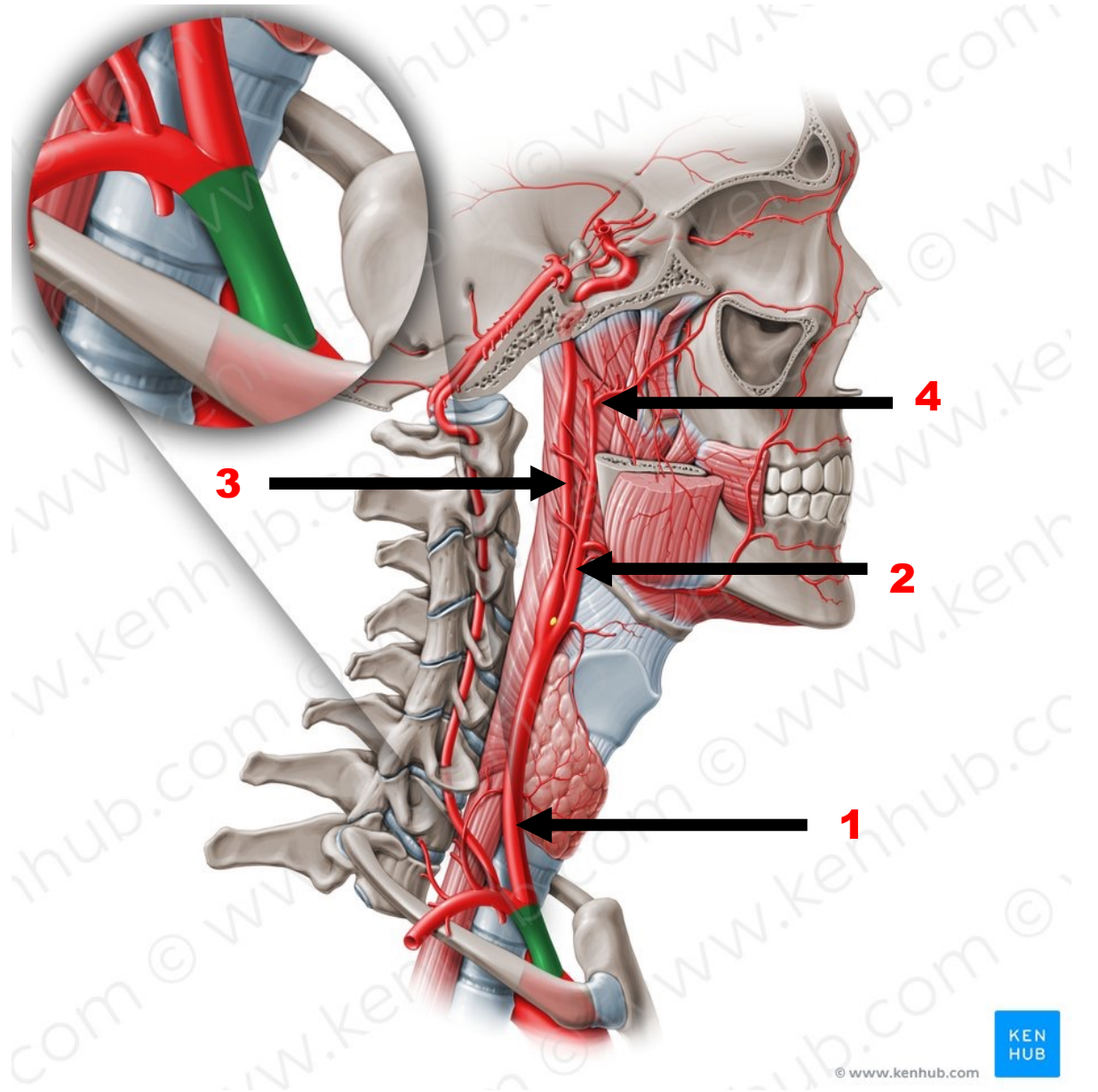
Neck Check list

1. Sternomastoid
2. Splenius Capitis
3. Infrahyoid muscles
4. Suprahyoid muscles
5. Scalene muscles
6. Common carotid artery
7. External carotid artery
8. Internal carotid artery
9. Internal jugular vein
10. Vagus nerve
11. Maxillary artery





1. Common carotid artery
2. External carotid artery
3. Internal carotid artery
4. Maxillary artery



Eye

1. Boundaries of bony orbit
2. Muscles of the eye
 - A. Superior Oblique
 - B. Inferior Oblique
 - C. Superior Rectus
 - D. Inferior Rectus
 - E. Medial Rectus
 - F. Levator palpebral superioris

Ear

1. External auditory meatus
2. Tympanic membrane
3. Malleus, incus and stapes
4. Cochlea , vestibule and semicircular canals

Supraorbital foramen
of frontal bone

Zygomatic process
of frontal bone

Lesser wing of
sphenoid bone

Greater wing of
sphenoid bone

Superior
orbital fissure

Orbital process of
palatine bone

Orbital surface of
zygomatic bone

Inferior orbital
fissure

Zygomatic bone

Infraorbital groove

Infraorbital foramen
of maxilla

Frontal bone

Orbital surface of
frontal bone

Anterior and
posterior ethmoidal
foramina

Optic canal

Nasal bone

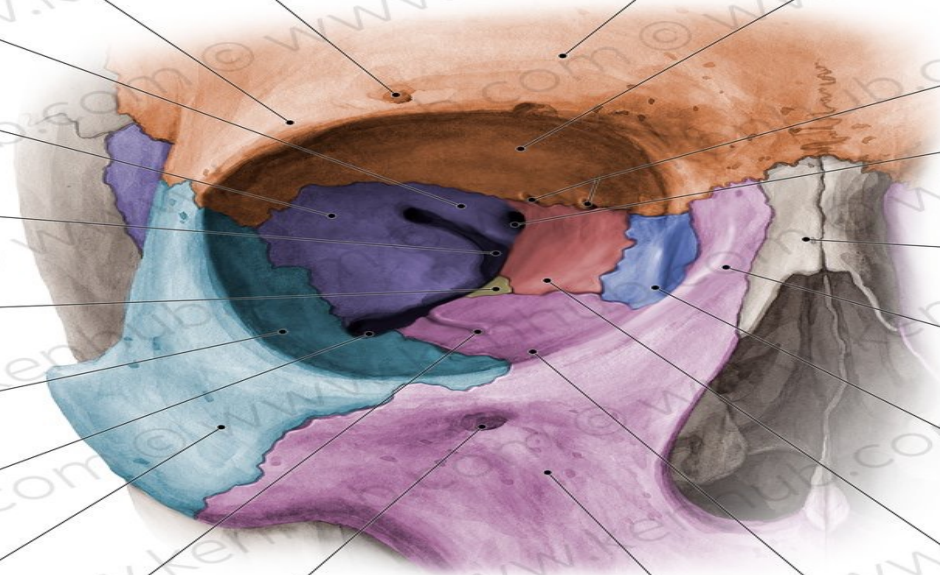
Frontal process
of maxilla

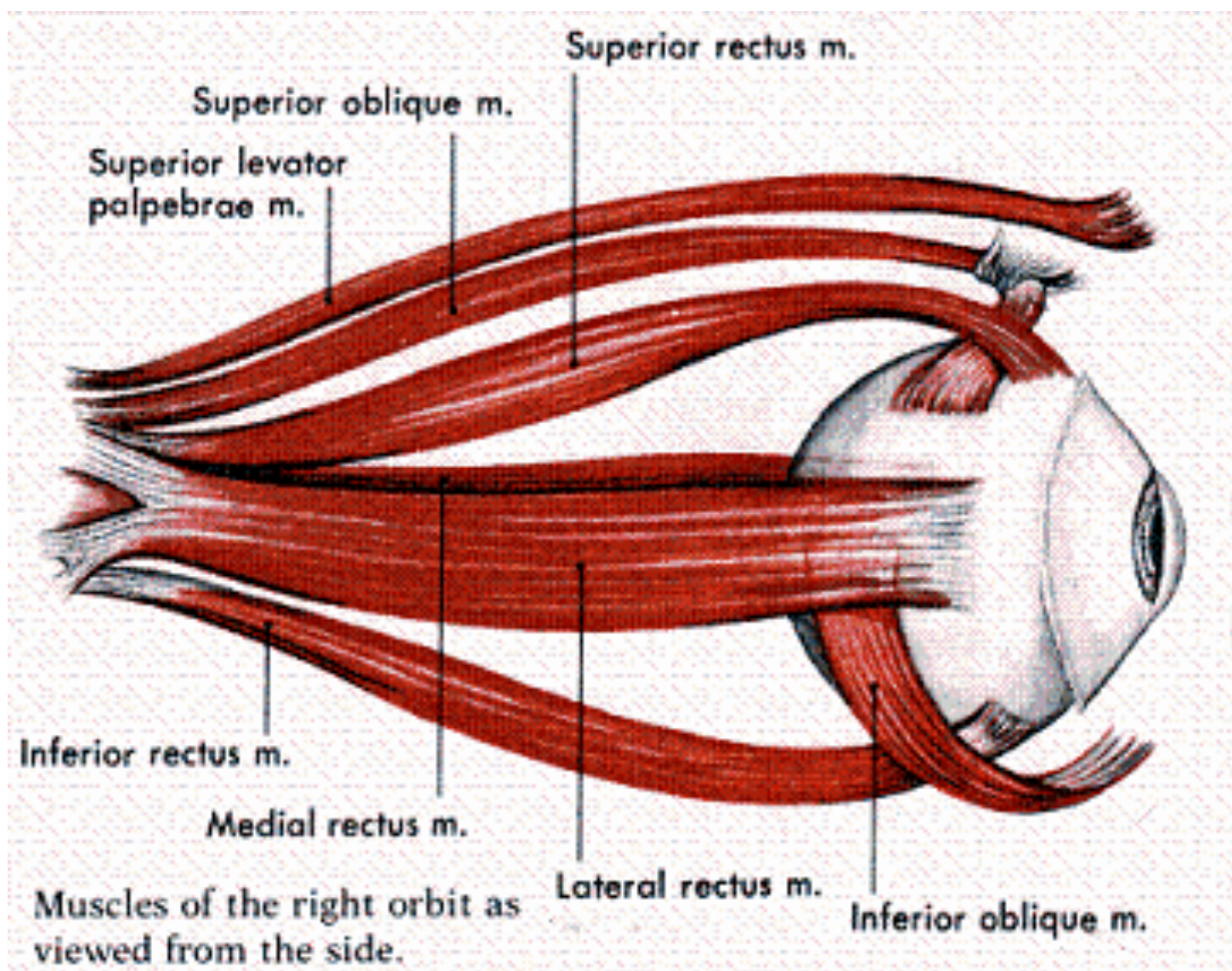
Lacrimal bone

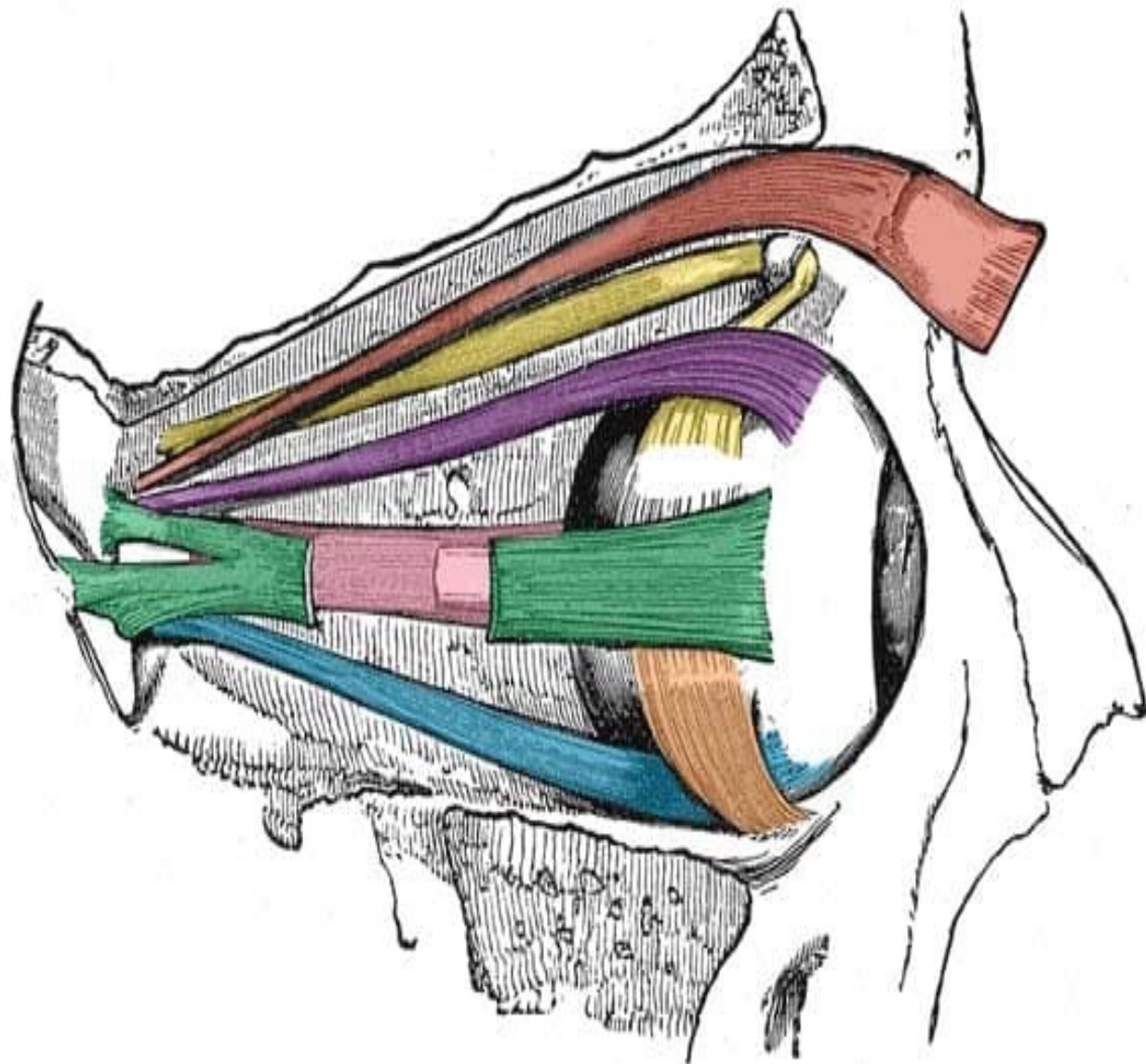
Orbital plate of
ethmoid bone








Orbital surface
of maxilla

Maxilla

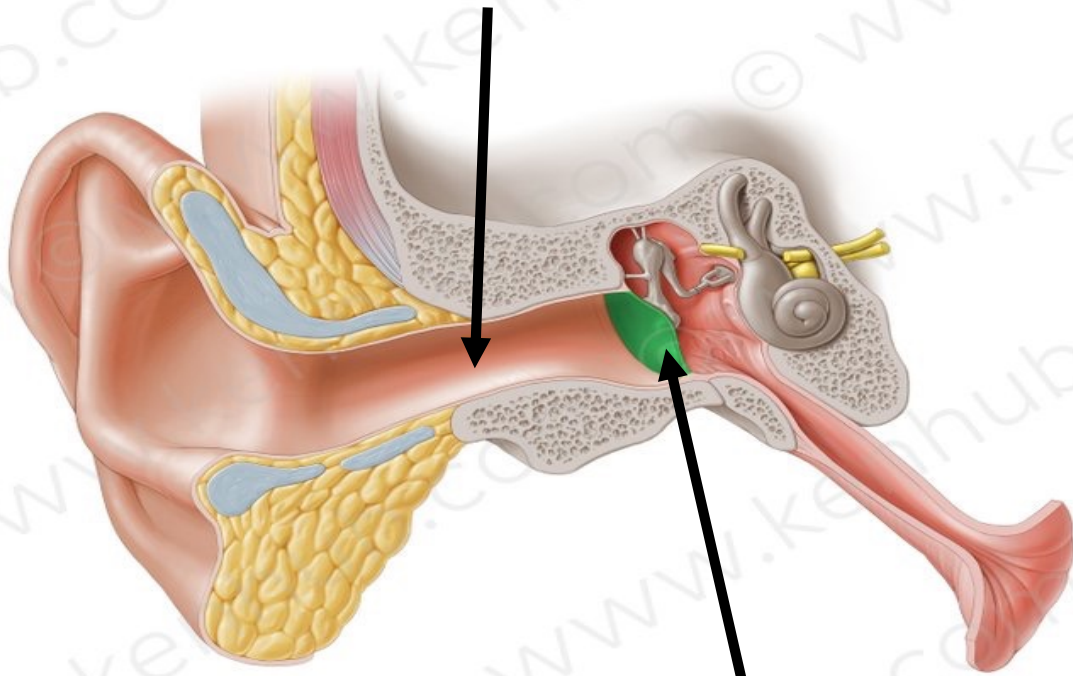




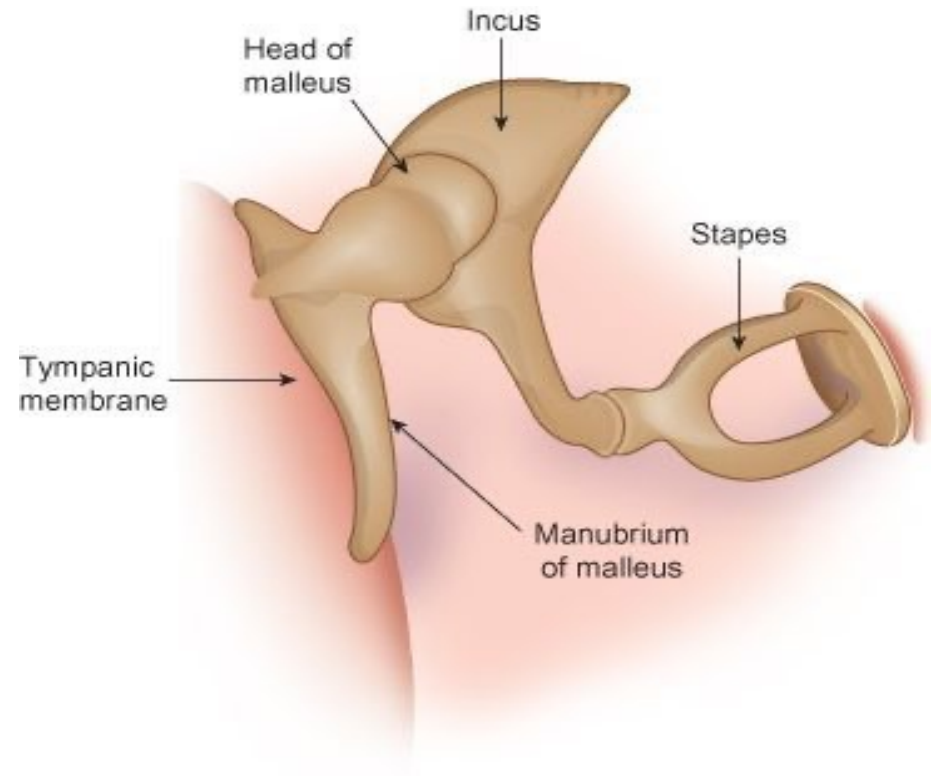


-  Levator palpebrae superioris
-  Superior oblique
-  Inferior oblique
-  Superior rectus
-  Medial rectus
-  Lateral rectus
-  Inferior rectus

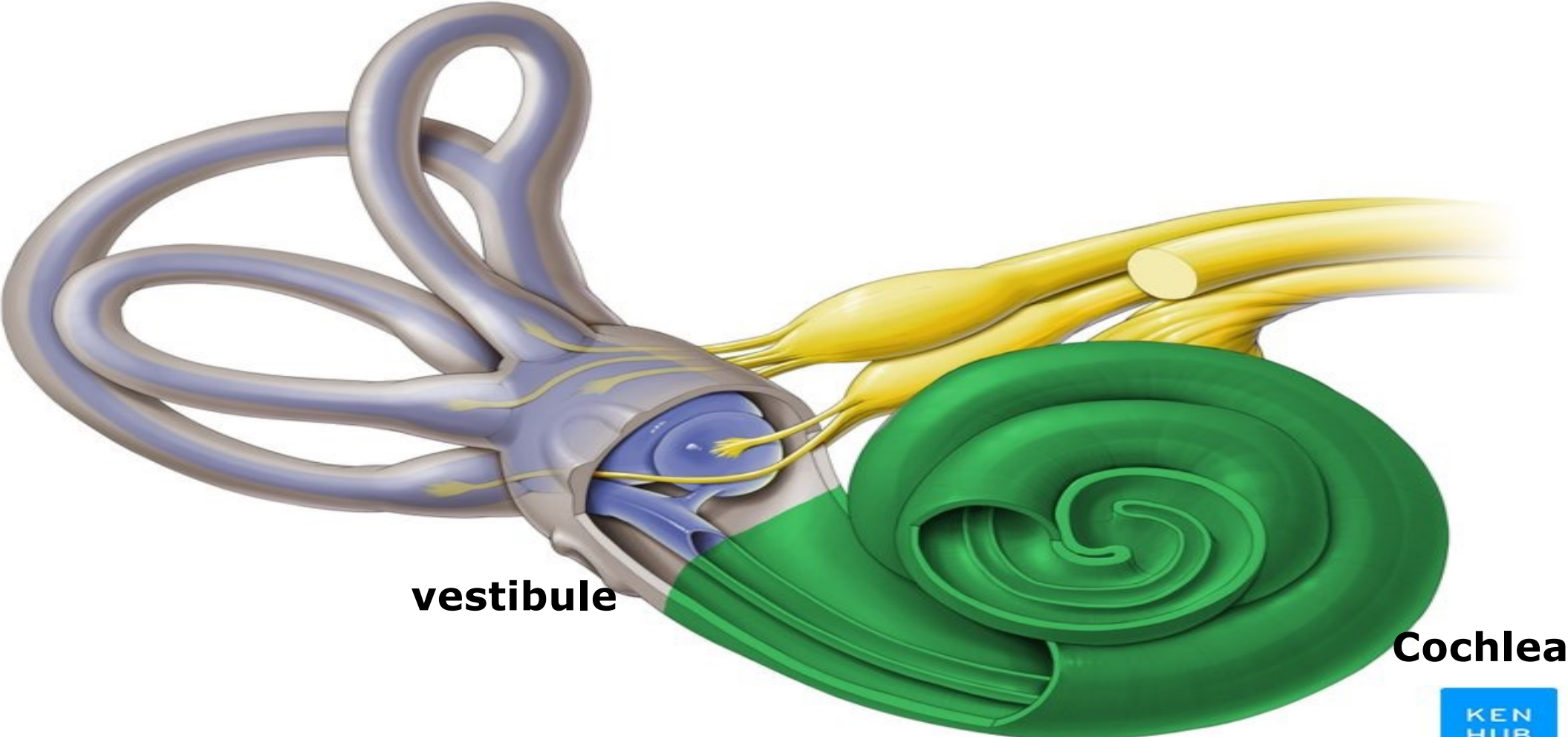
External auditory meatus



Tympanic membrane



Semicircular canals



vestibule

Cochlea

A top-down view of a 'thank you' card. The card is cream-colored with the words 'thank you' written in a brown, cursive calligraphic font. The card is placed on a brown paper envelope. Above the card are two gold-colored paper clips. Below the card is a gold-colored fountain pen with a clear, faceted diamond-shaped nib. The entire scene is set on a light gray surface, decorated with several green eucalyptus leaves scattered around the card and pen.

thank
you