

بِسْمِ اللَّهِ الرَّحْمَنِ الرَّحِيمِ

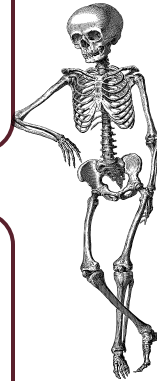


FINAL | Lab 4

Large Intestine

Written by: Qais Alqaisi

Reviewed by: Waleed Darawad



وَإِنْ تَتَوَلَّوْا يَسْتَبَدِلْ قَوْمًا غَيْرَكُمْ ثُمَّ لَا يَكُونُوا أَمْثَلَكُمْ

اللهم استعملنا ولا تستبدلنا



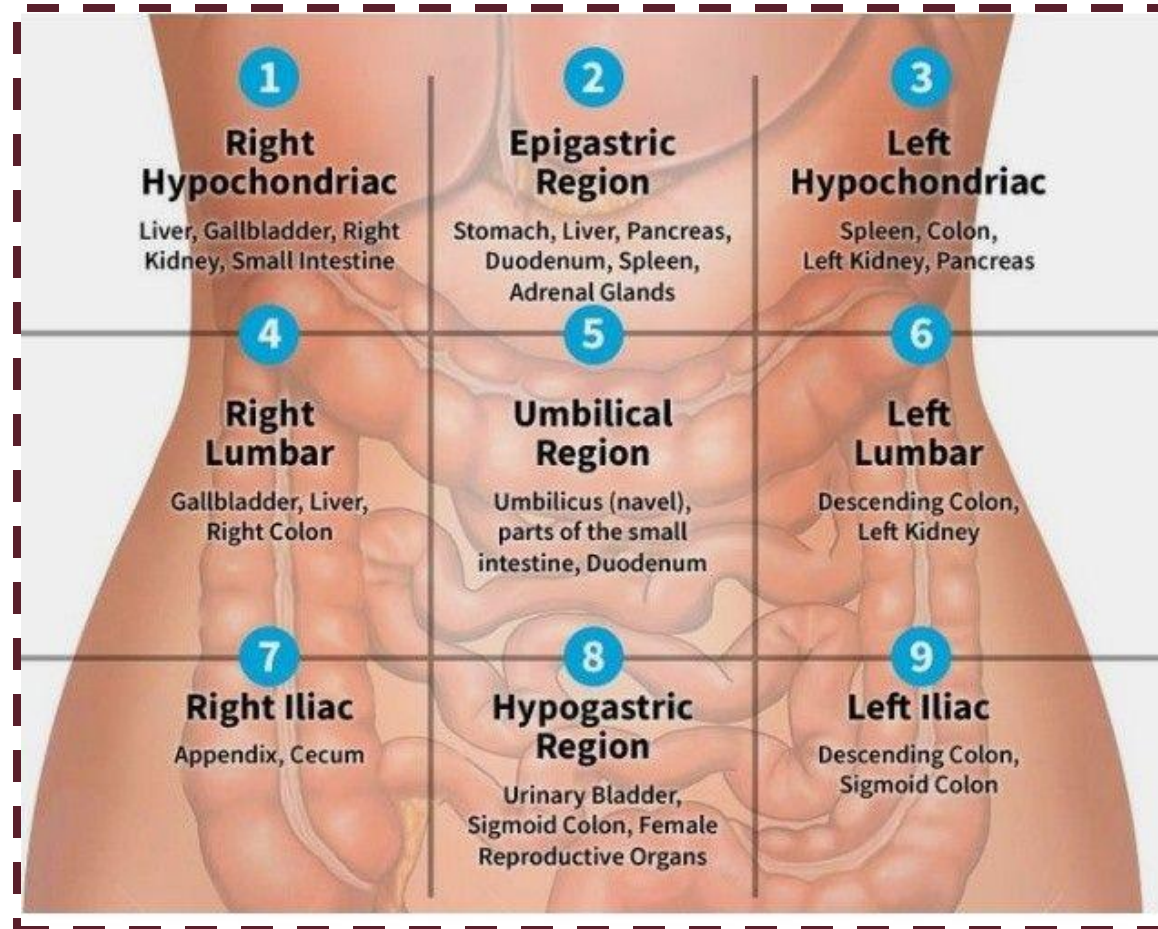
The practical of the 4th week

1. **Cecum**
2. **Appendix**
3. **Ascending Colon**
4. **Transverse Colon**
5. **Descending Colon**
6. **Sigmoid Colon**



The practical of the 4th week

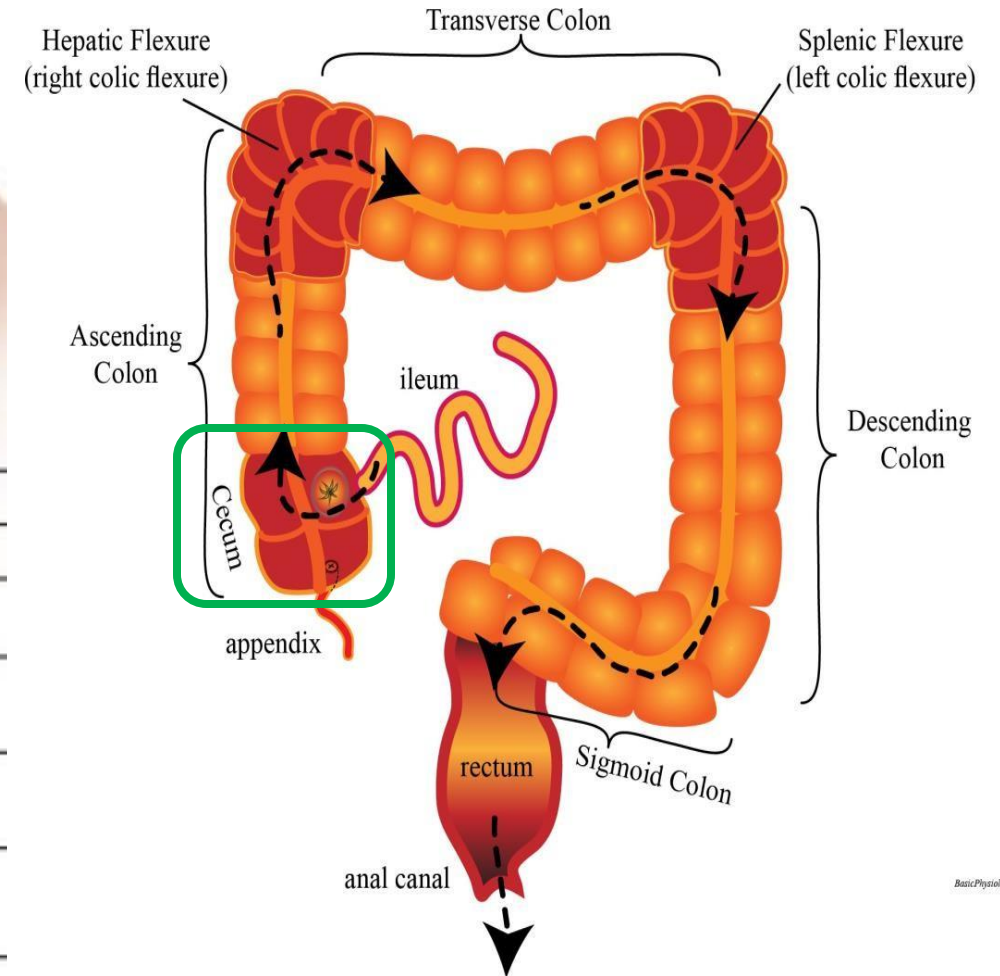
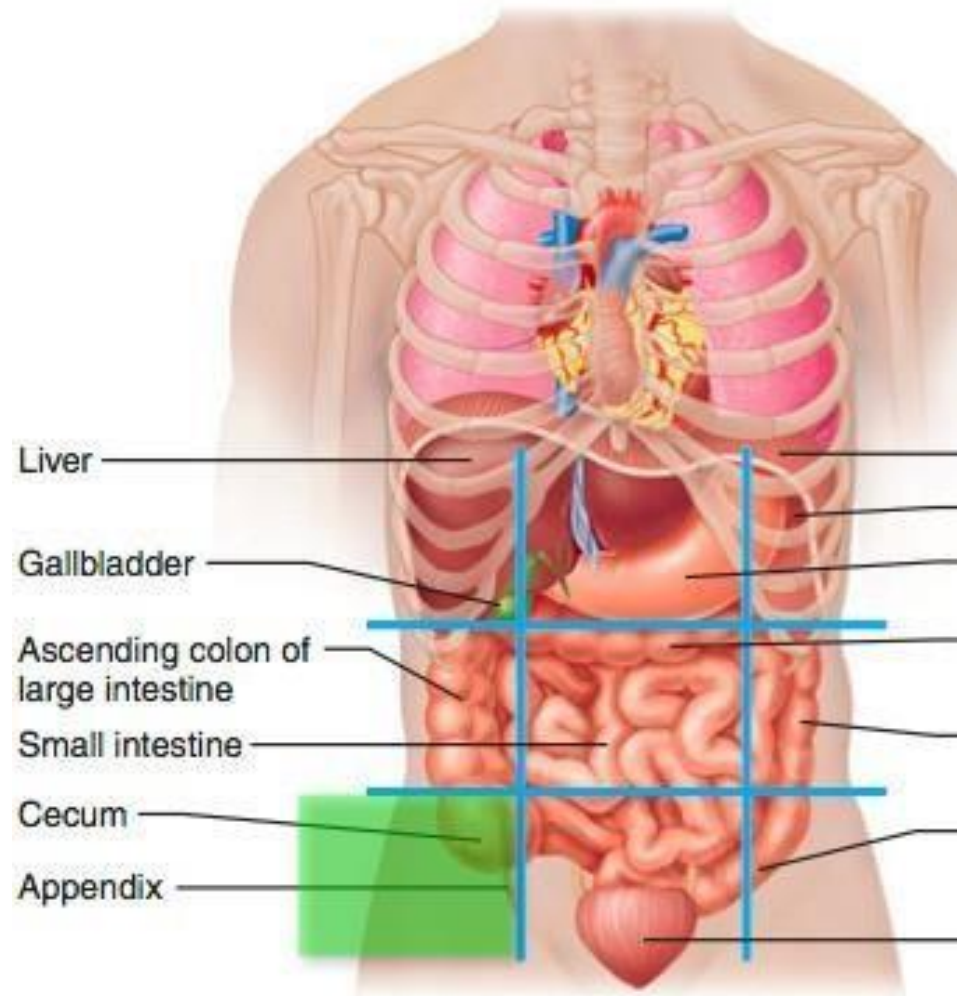
Make sure to
know these
first



✱ Cecum

- The students should know and identify the :
 1. Site and Position
 2. Peritoneal Relations
 3. Features
 4. Relations
 5. Blood supply

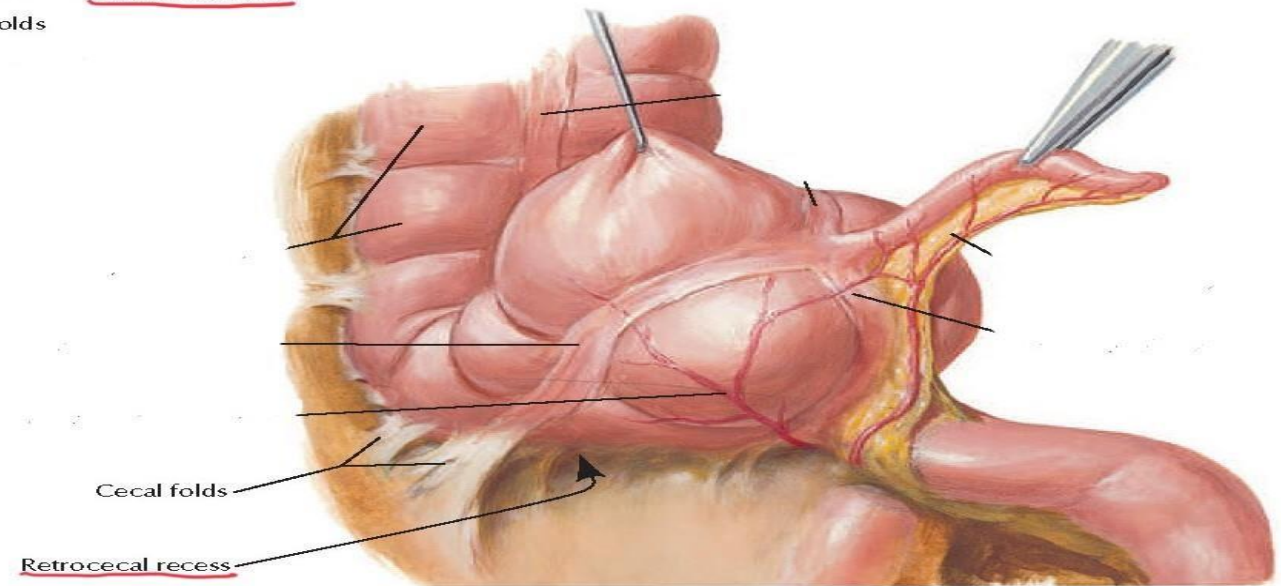
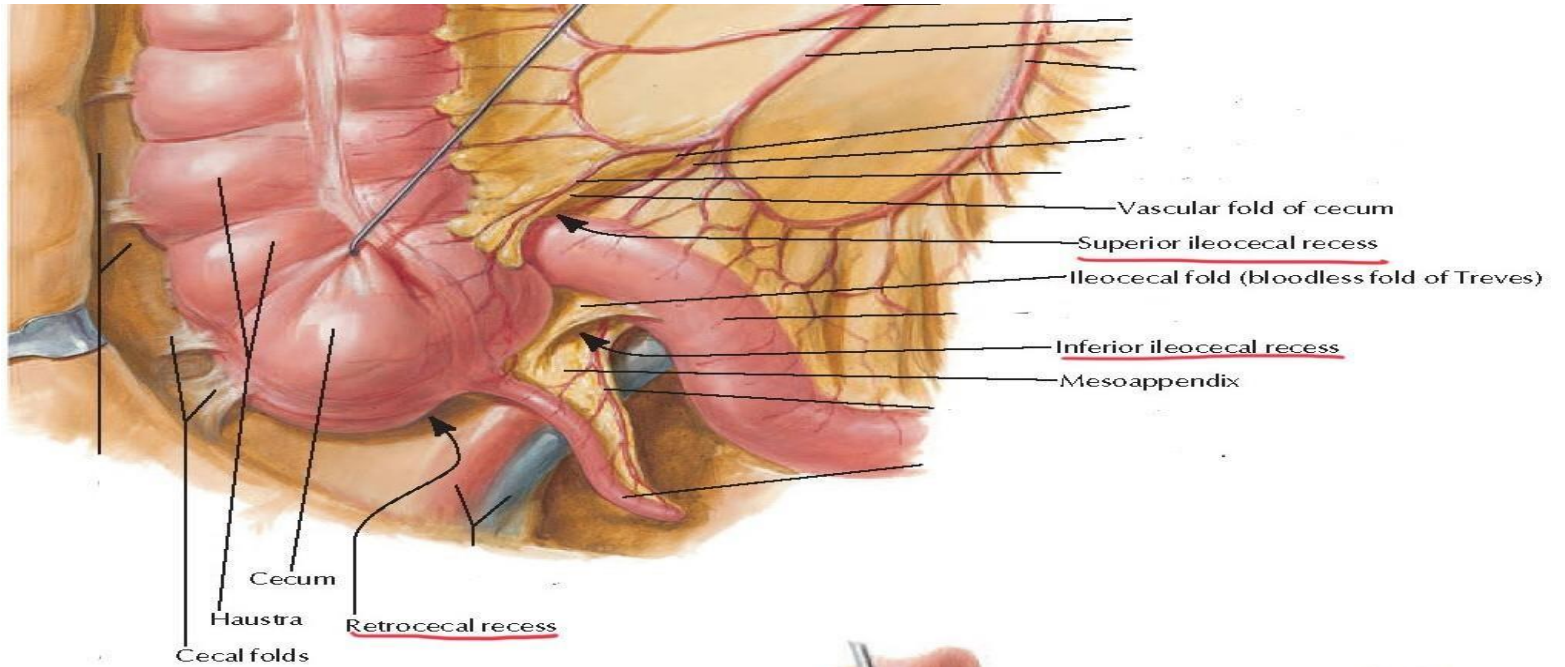
- Site and Position of the cecum



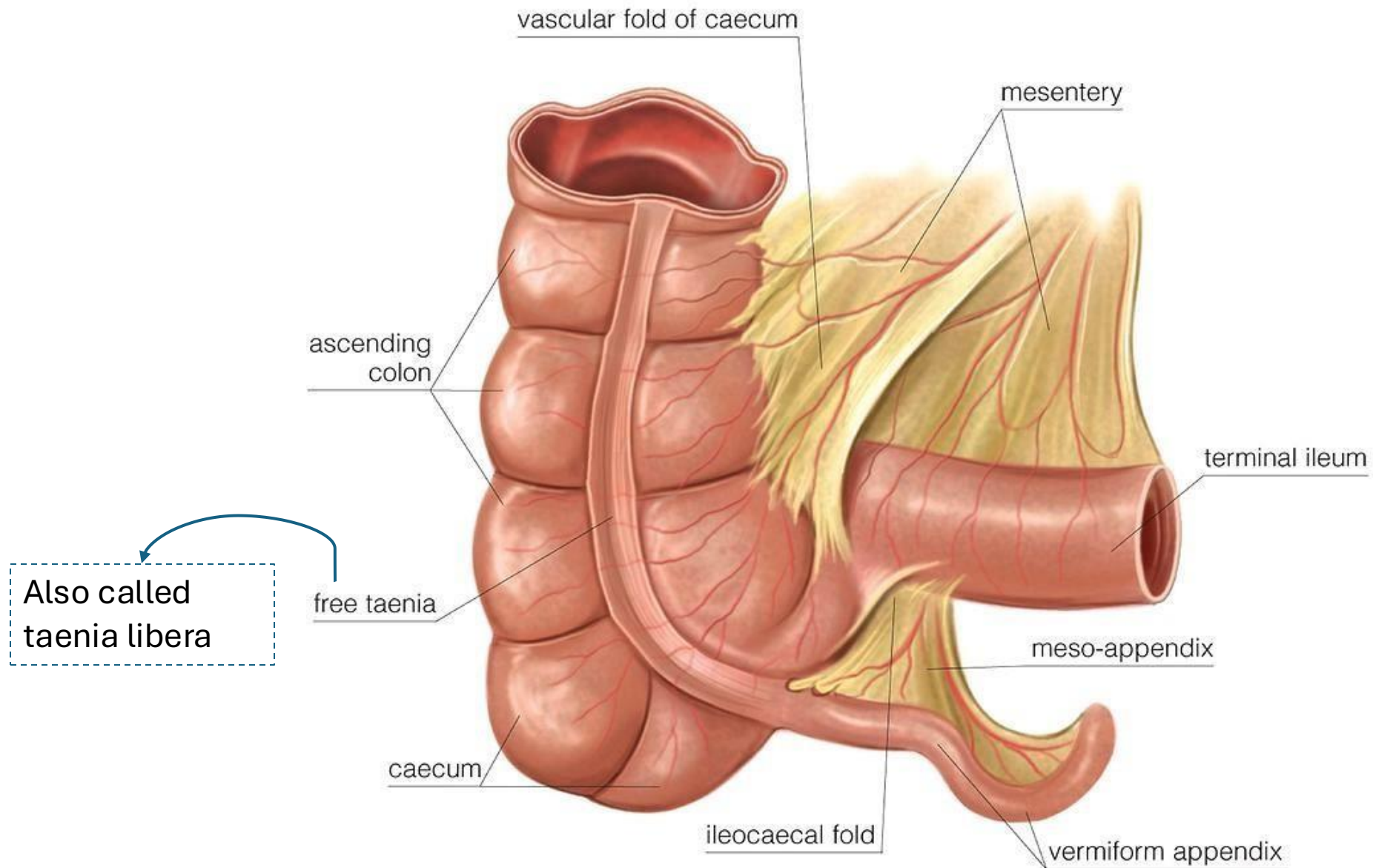
- Folds of peritoneum close to the cecum

- The students should identify :

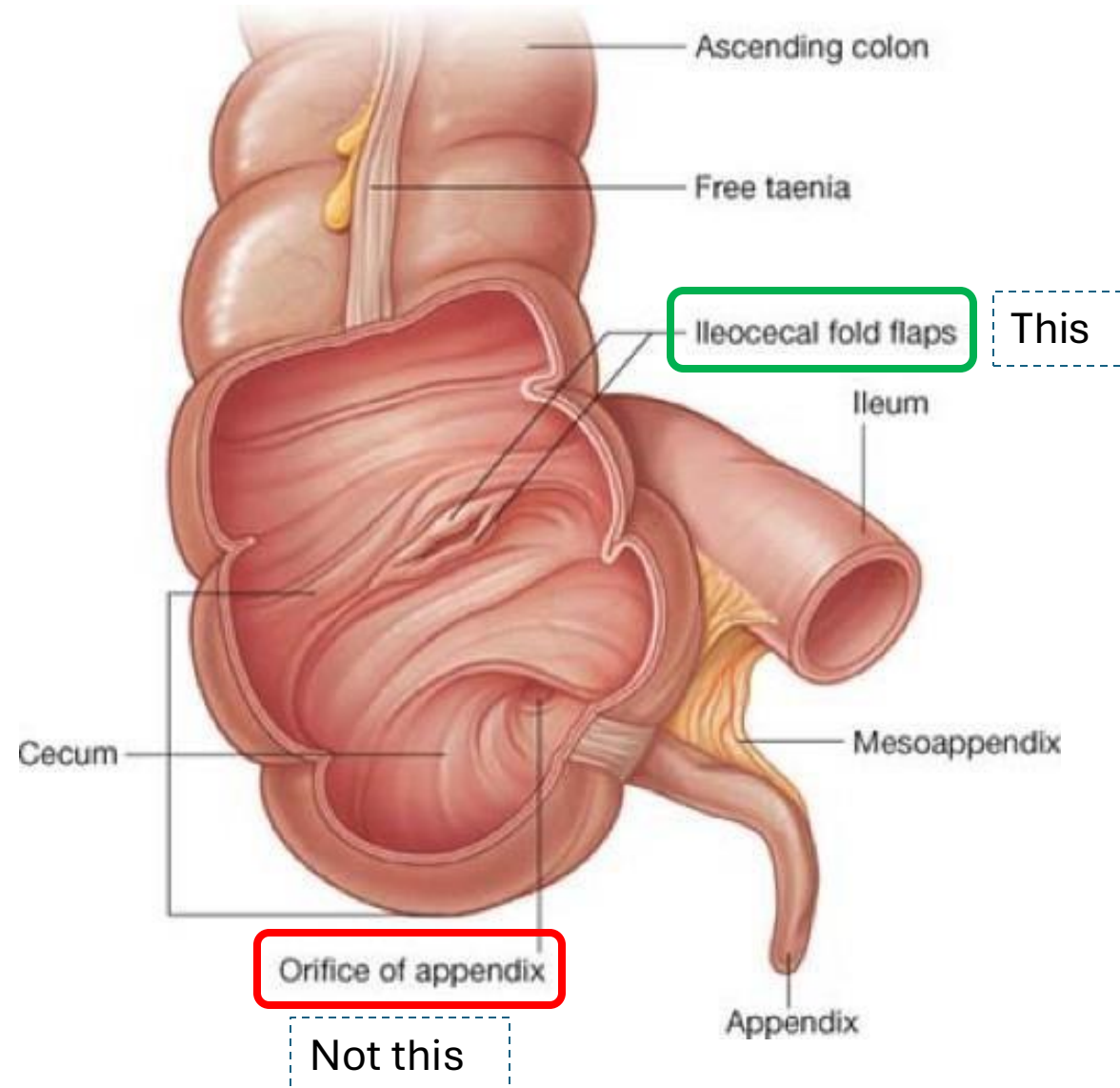
1. Superior ileocecal recesses
2. Inferior ileocecal recesses
3. Retrocecal recesses



- Taenia coli



- Ileocecal Valve



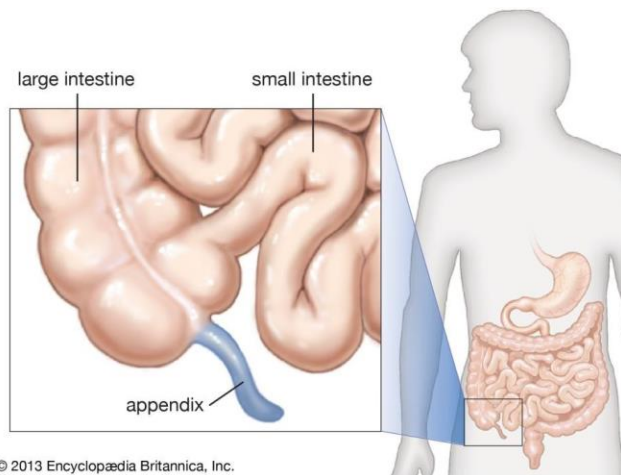
• Relations of the cecum

- Anterior relations :

1. Coils of the small intestine.
2. Greater omentum.
3. Anterior abdominal wall (in the right iliac region)

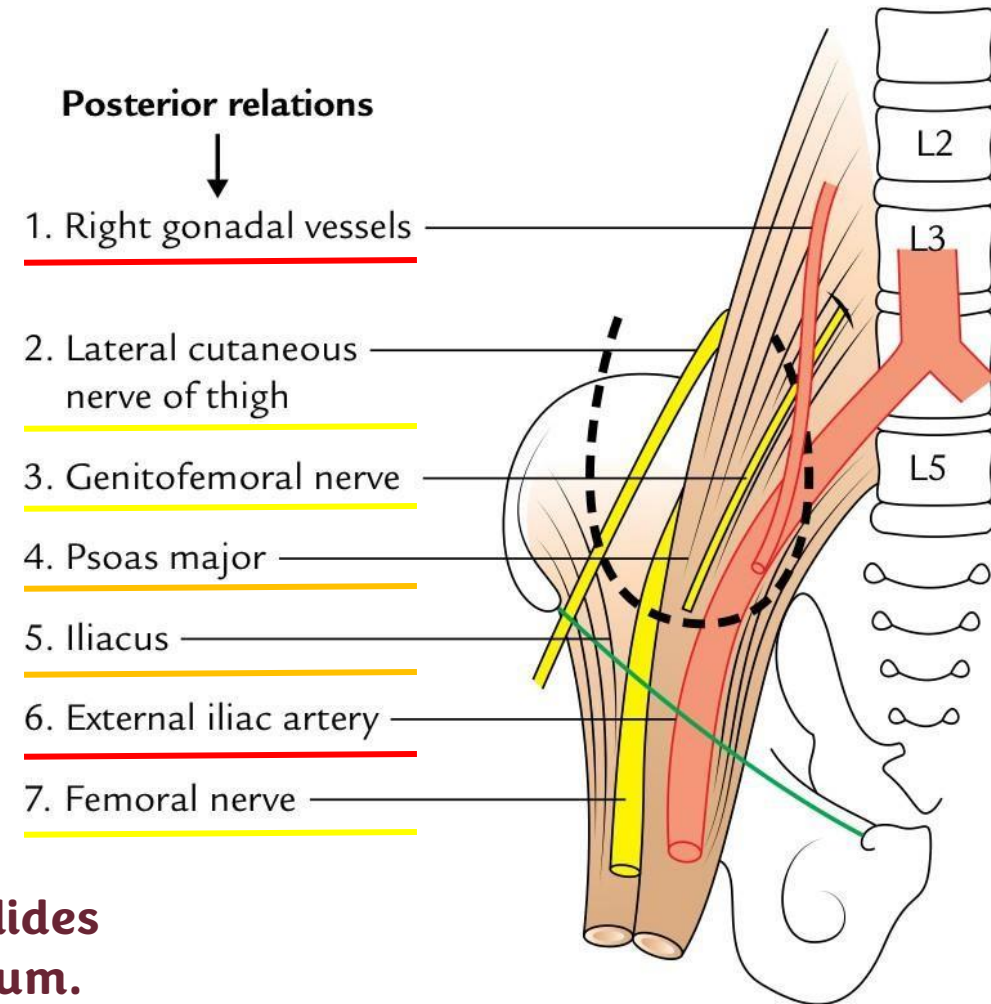
- Medially:

1. The appendix arises from the cecum on its medial side



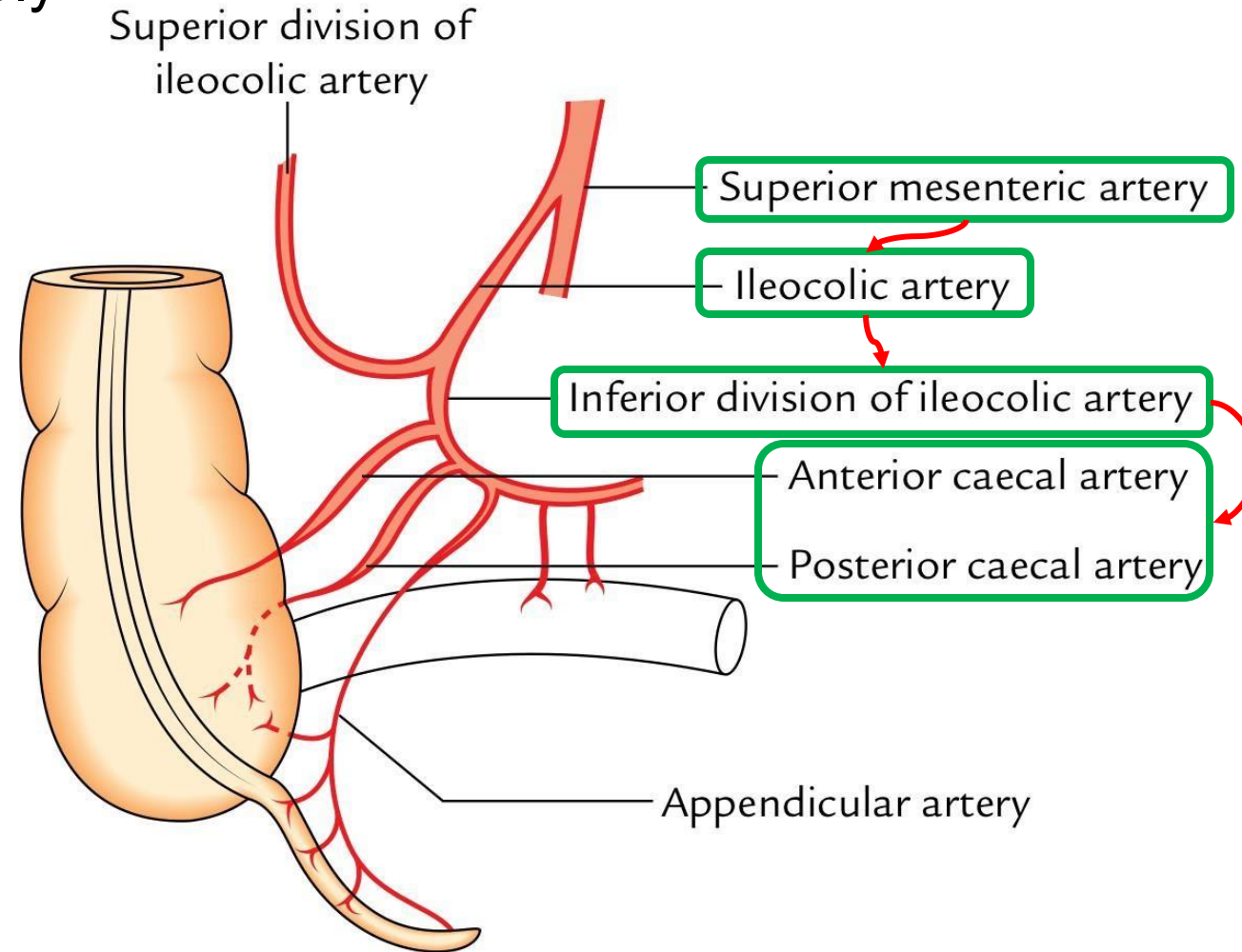
© 2013 Encyclopædia Britannica, Inc.

The appendix in theoretical slides is postero-medial to the cecum.



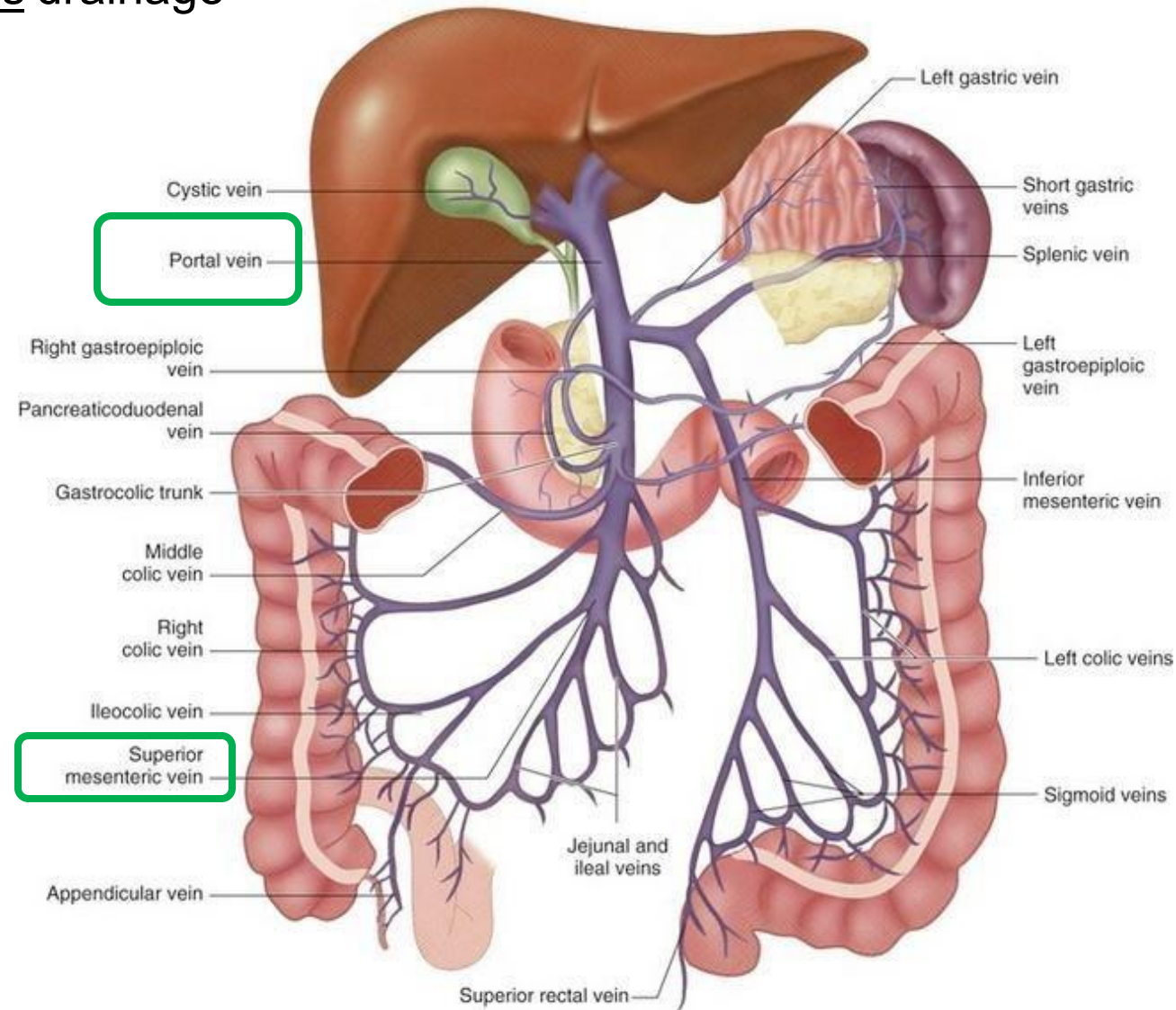
- Blood supply of the cecum

- Arterial supply



Arterial supply of the caecum and appendix.

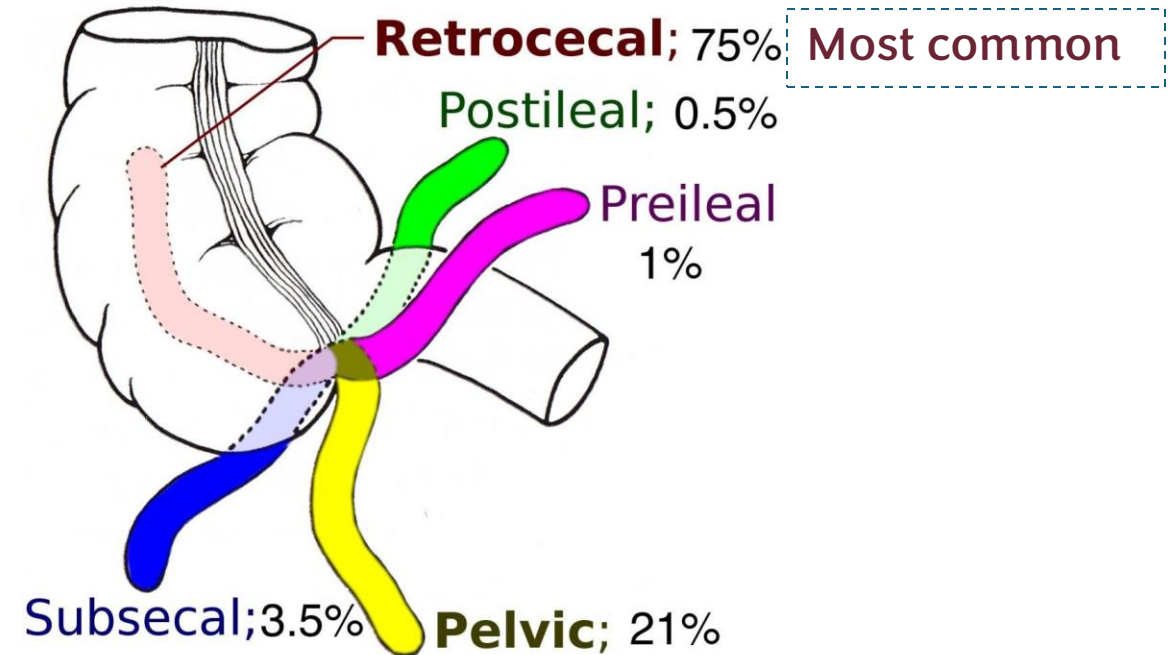
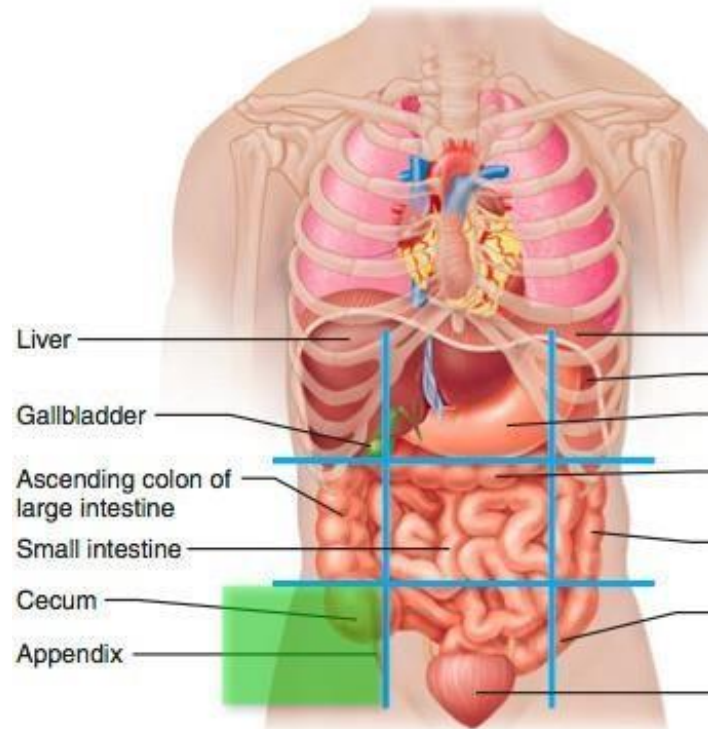
- Blood supply of the cecum
- Venous drainage



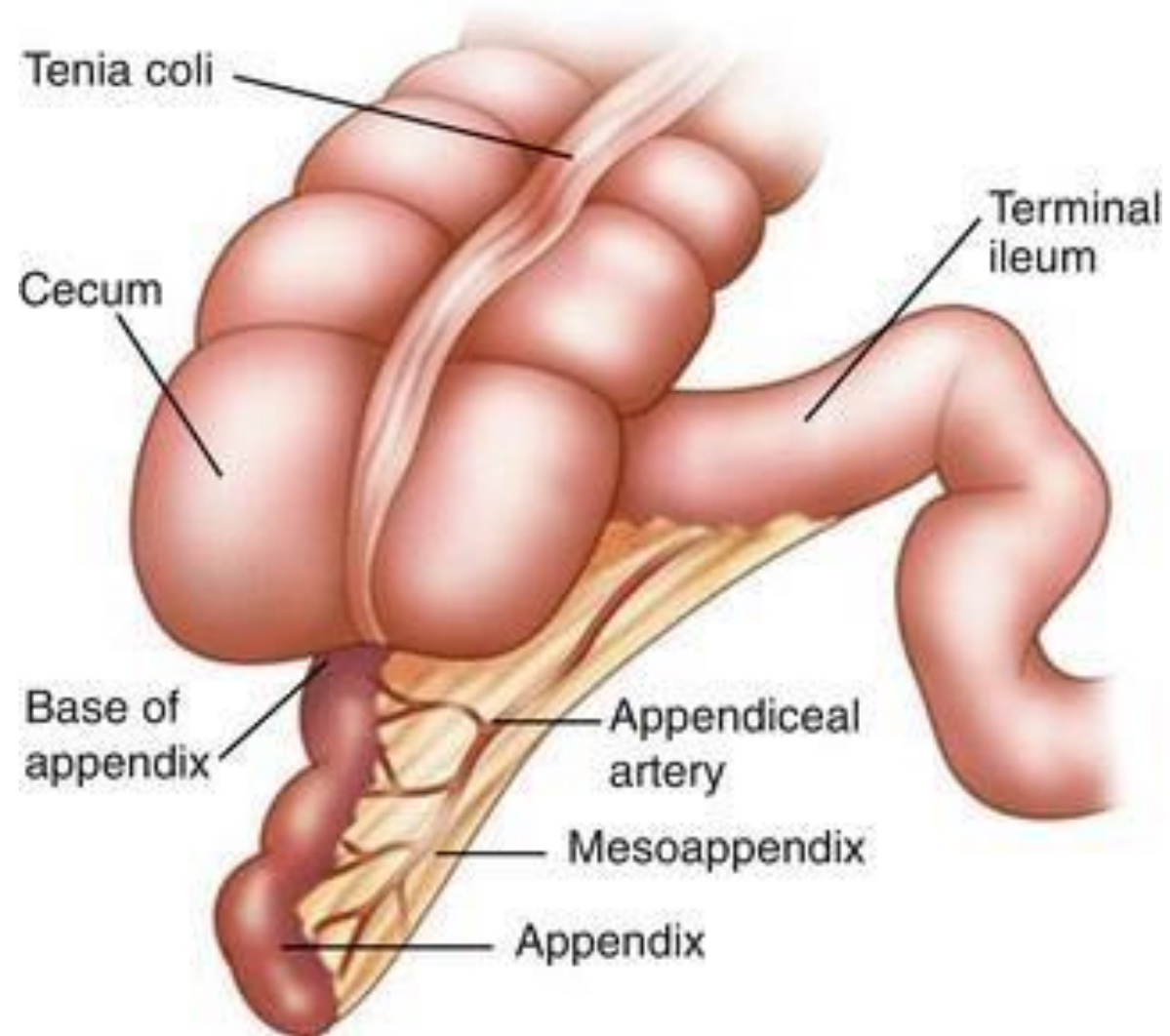
✱Appendix

- The students should know and identify the :
 1. Site and Position
 2. Peritoneal Relations
 3. Features
 4. Relations
 5. Blood supply

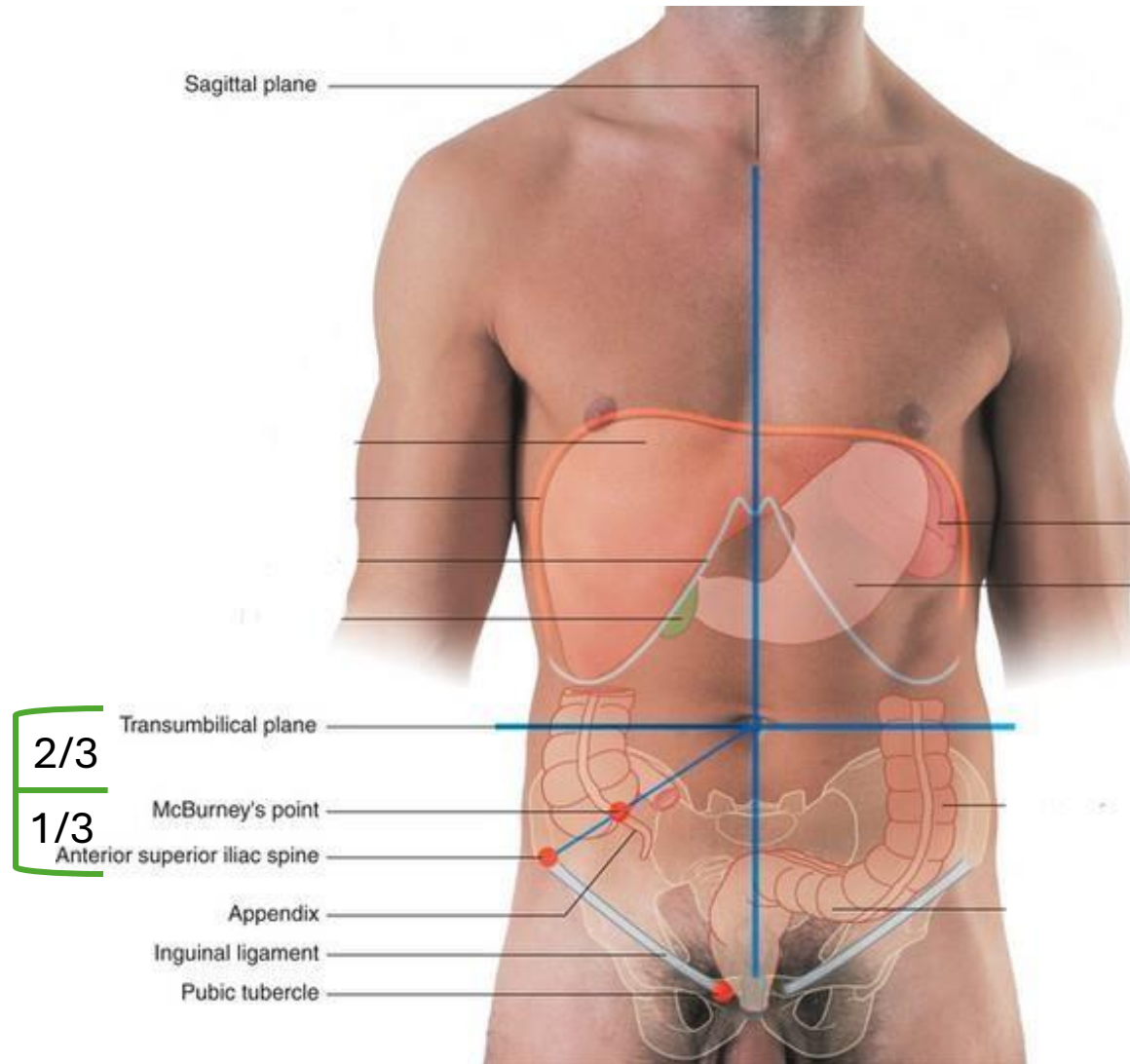
- Site and Position of the Appendix



- Peritoneal Relations (mesoappendix)

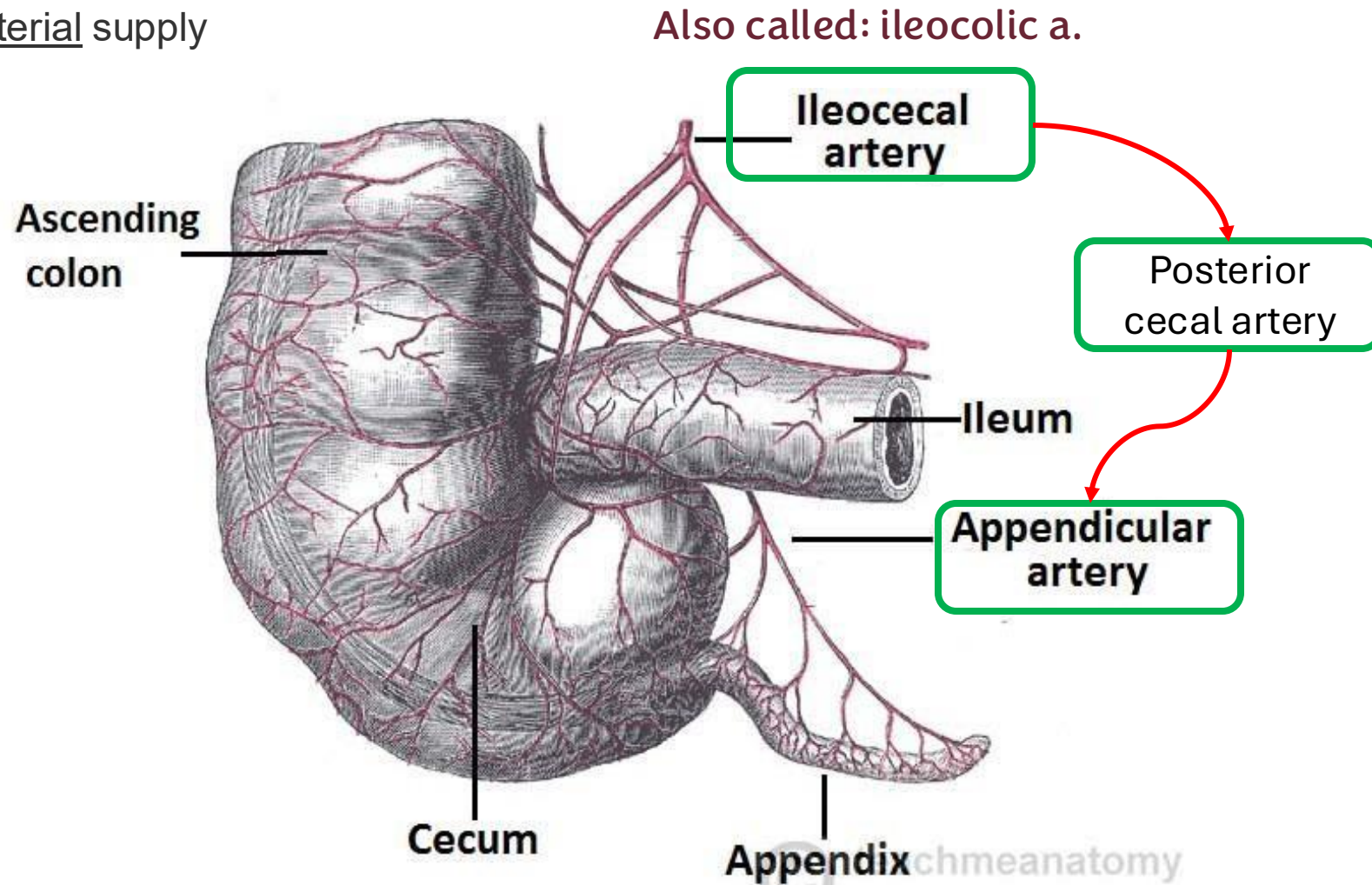


- McBurney's point



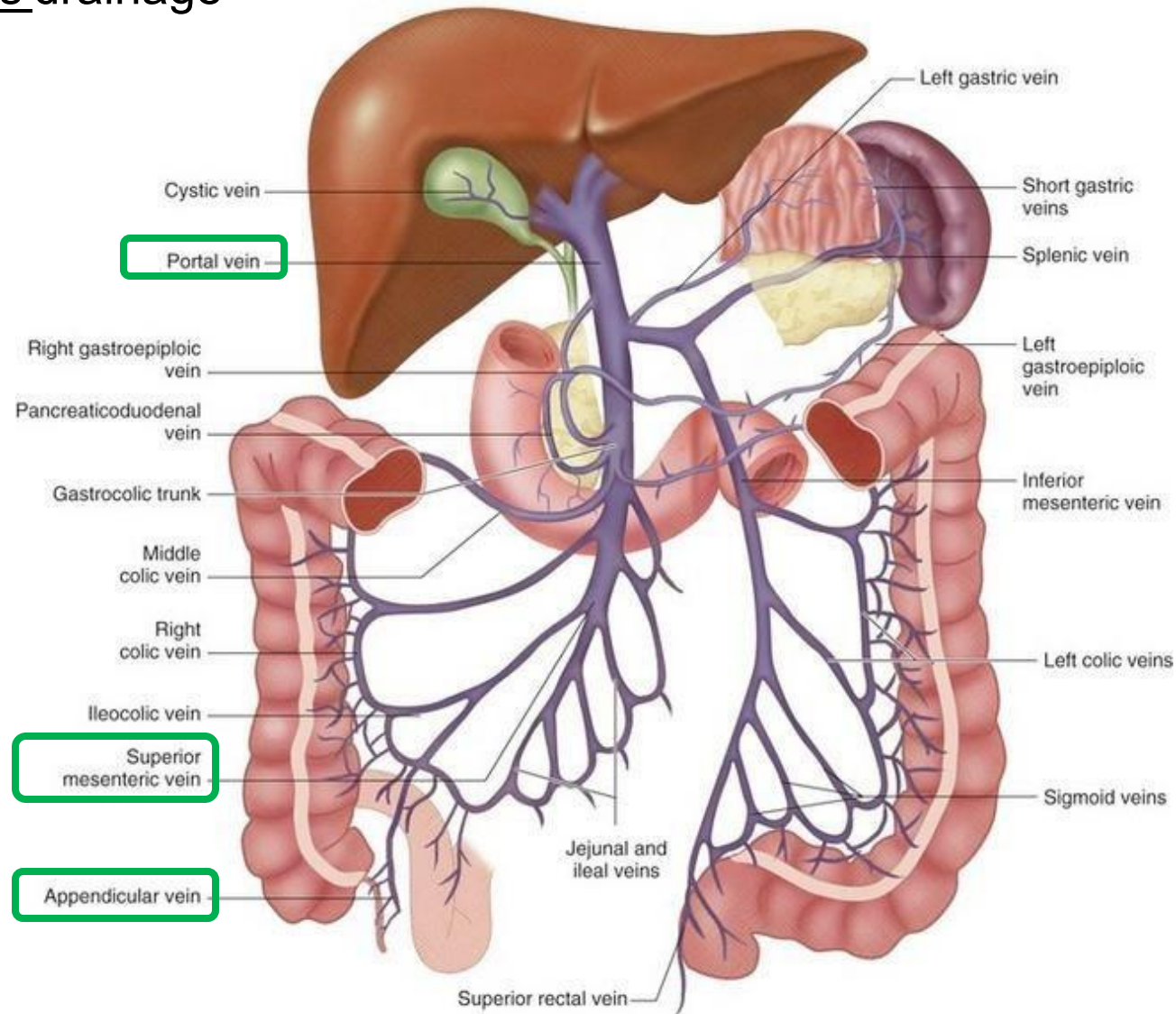
- Blood supply of the Appendix

- Arterial supply



- Blood supply of the Appendix

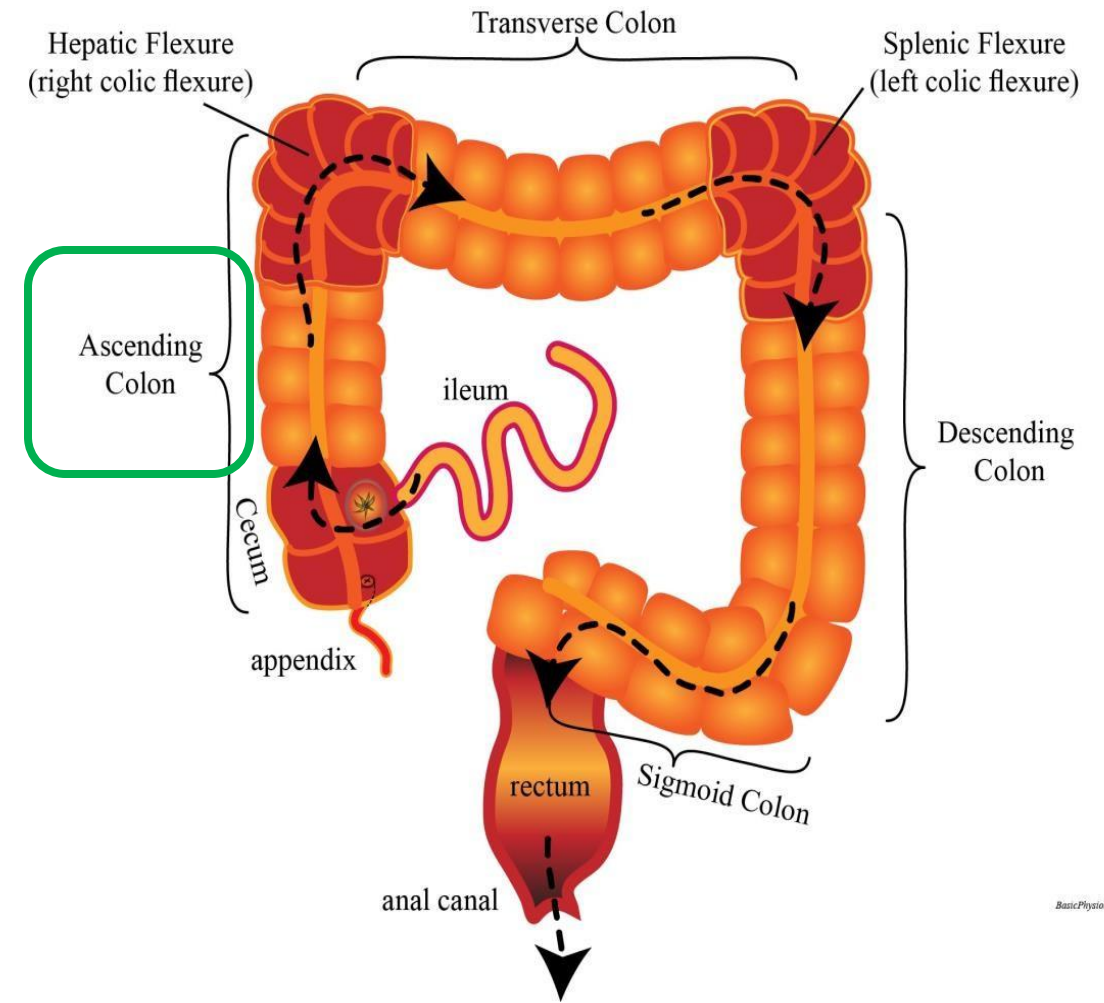
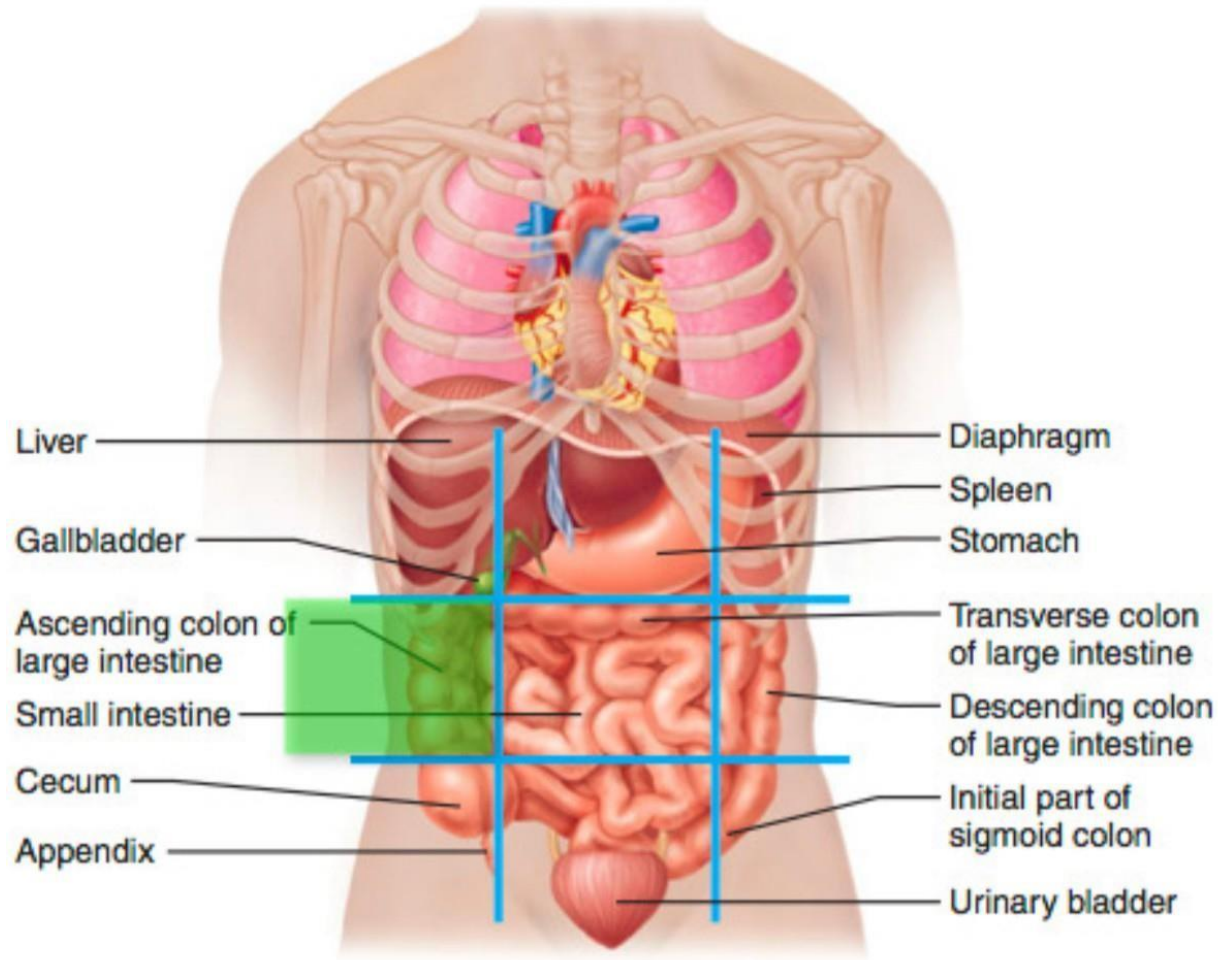
- Venous drainage



✱ Ascending Colon

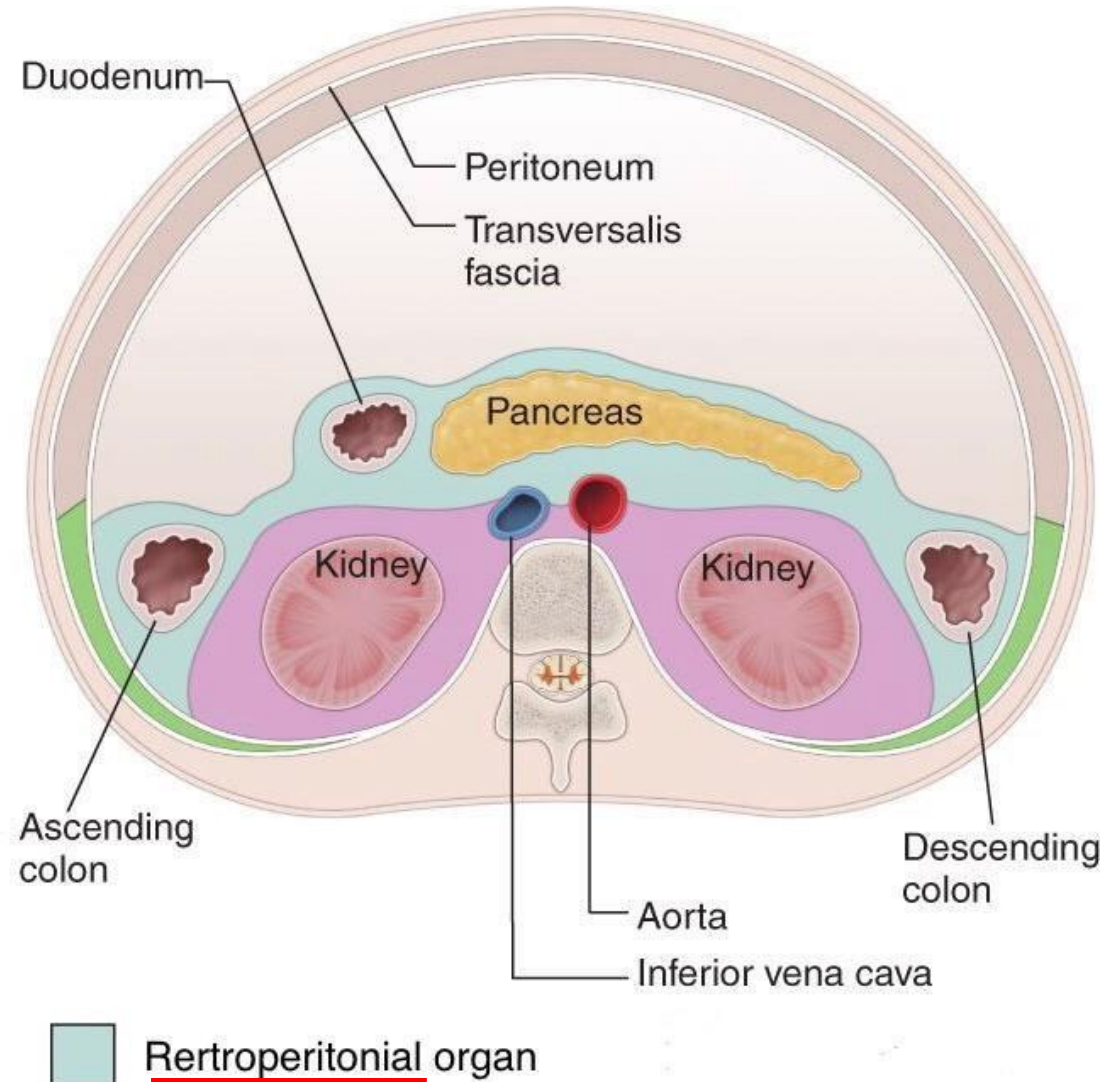
- The students should know and identify the :
 1. Site and Position
 2. Peritoneal Relations
 3. Features
 4. Relations
 5. Blood supply

• Site and Position of the Ascending Colon

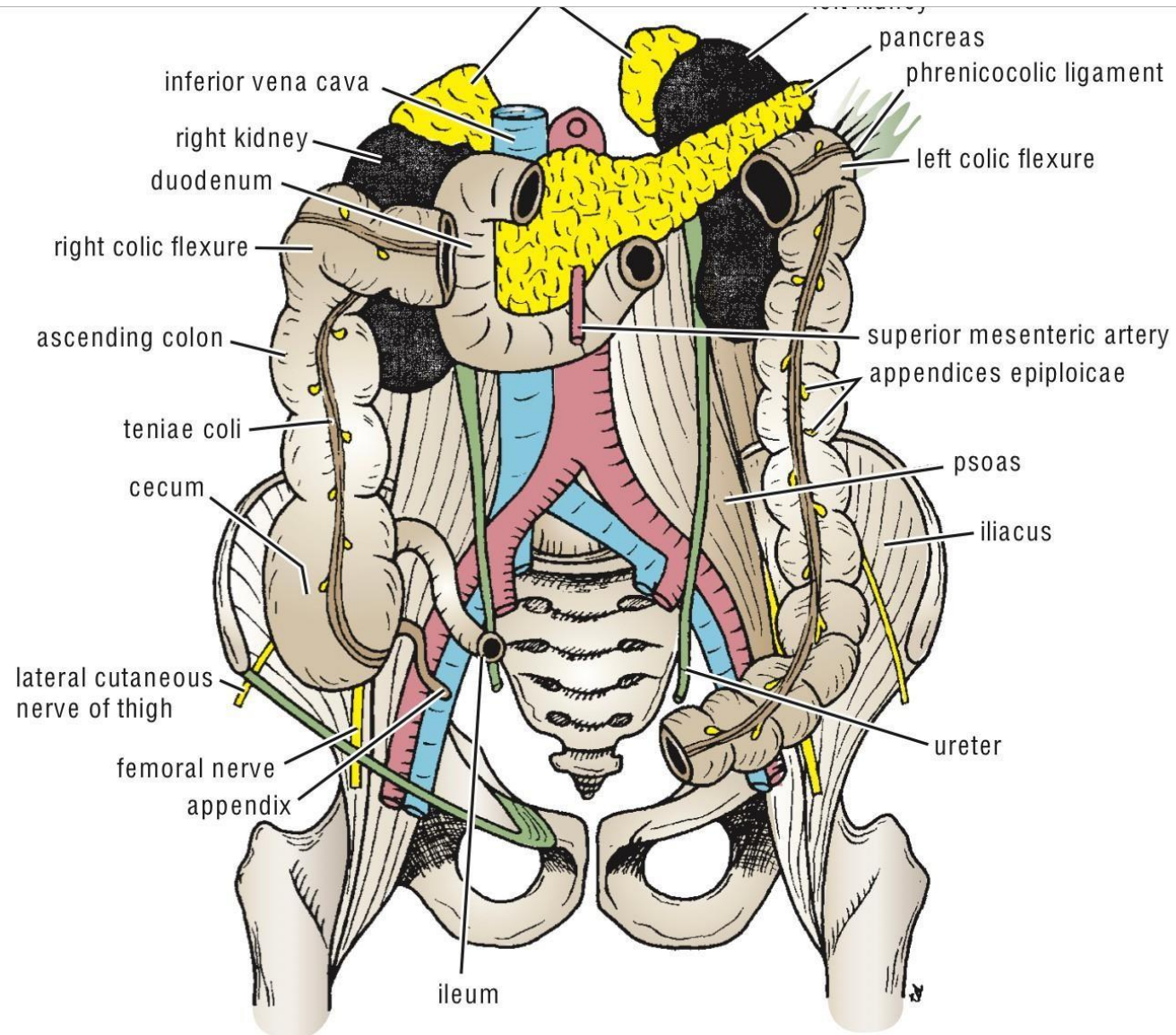


- Peritoneal Relations (Inferior view)

Right side of the body : left side of the body



- Taenia coli



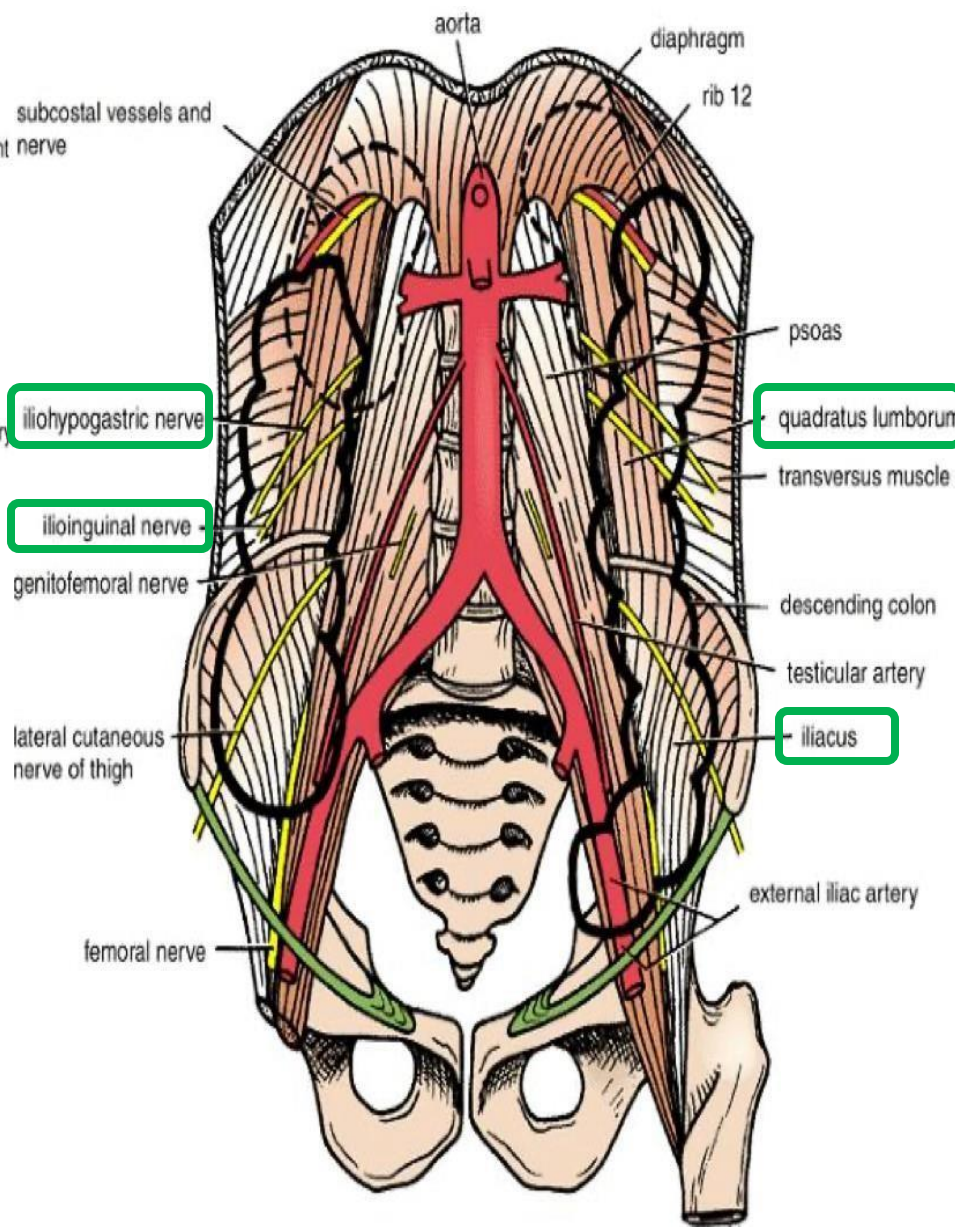
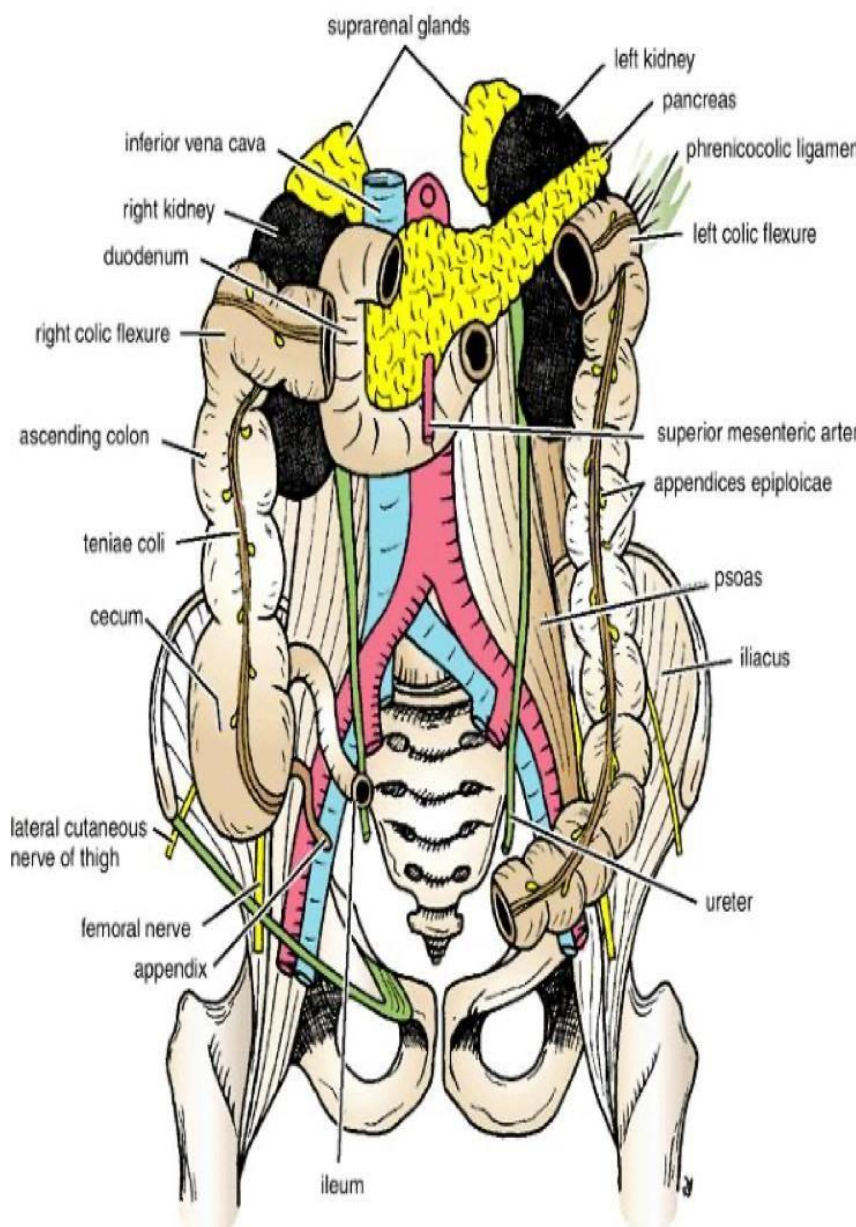
• Relations of ascending colon

• Anterior relations :

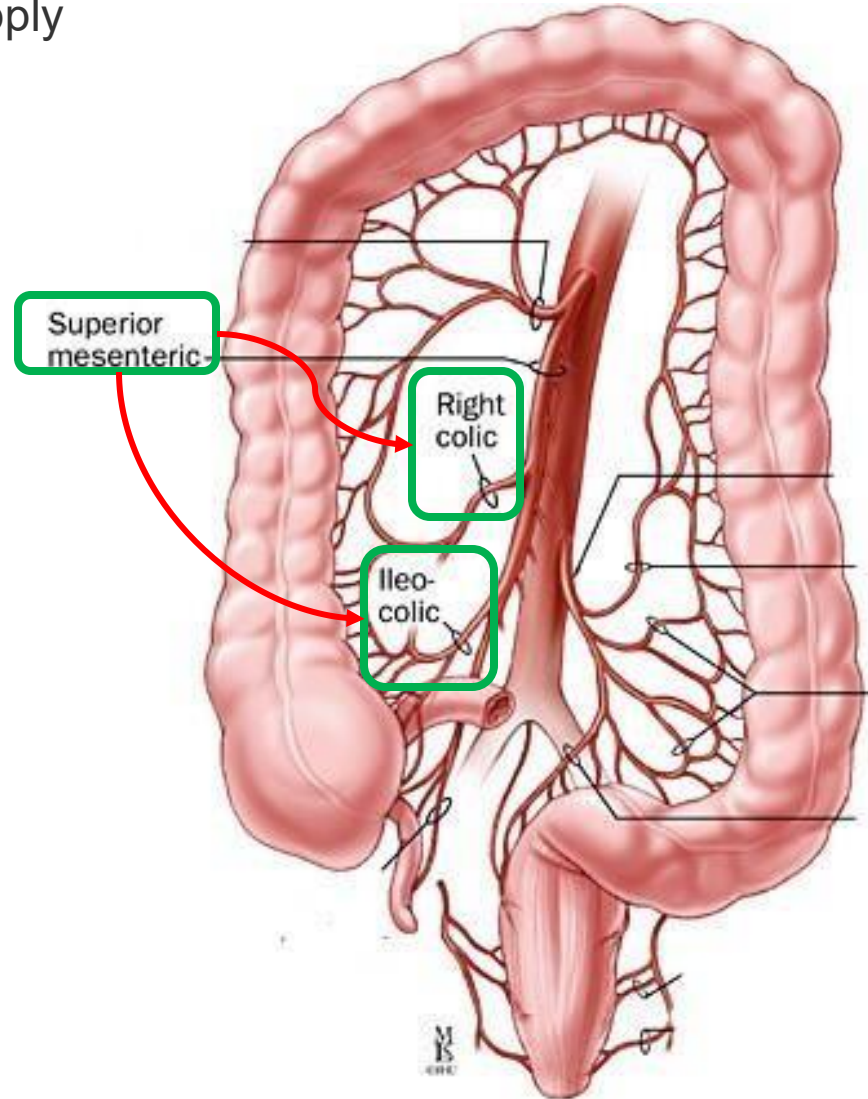
1. Coils of small intestine
2. The greater omentum
3. The anterior abdominal wall

• Posteriorly:

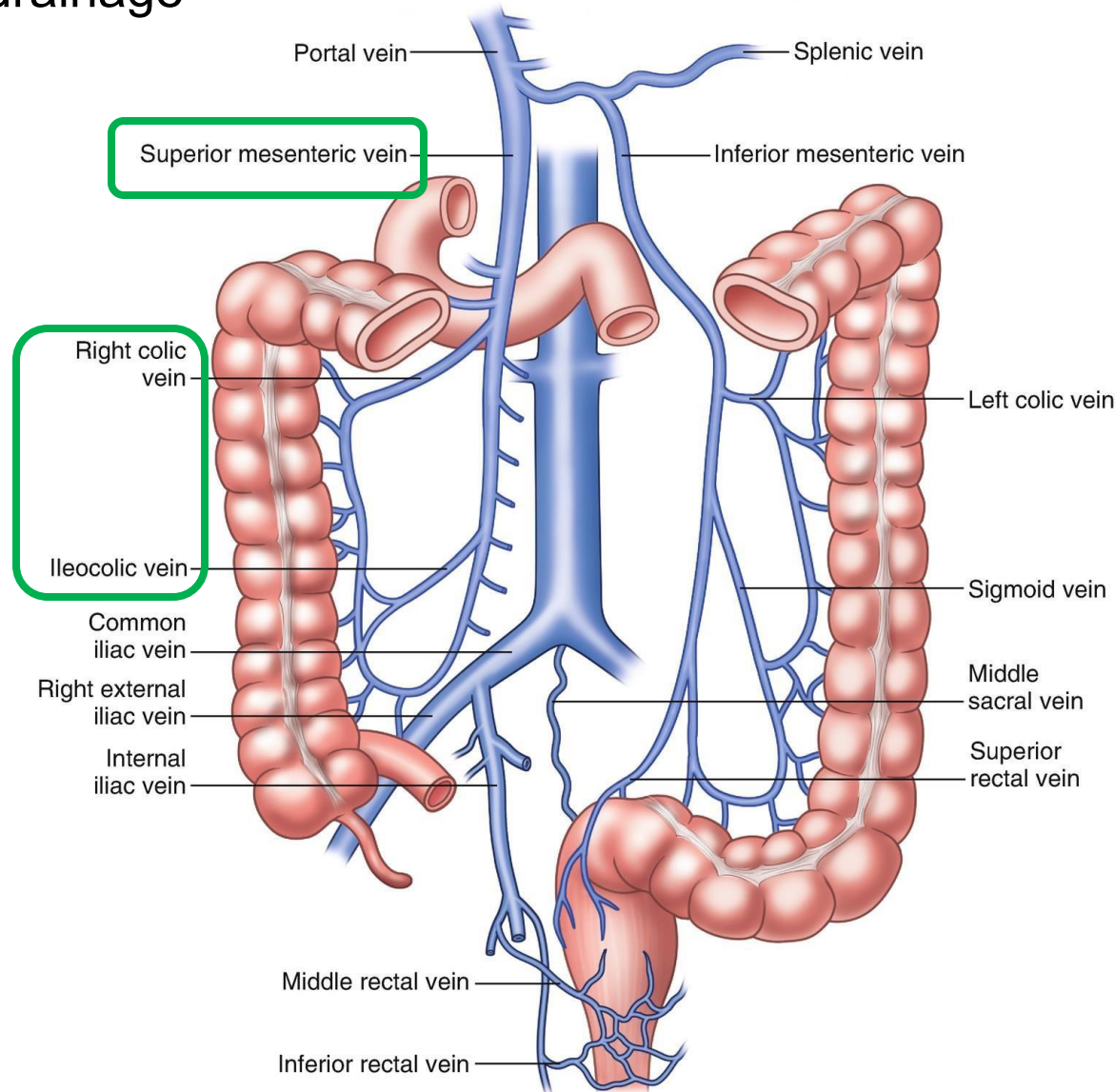
4. The iliacus
5. The iliac crest
6. The quadratus lumborum
7. The origin of the transversus abdominis muscle,
8. The lower pole of the right kidney.
9. The iliohypogastric .n
10. The ilioinguinal nerves cross behind it .



- Blood supply of the ascending colon
- Arterial supply



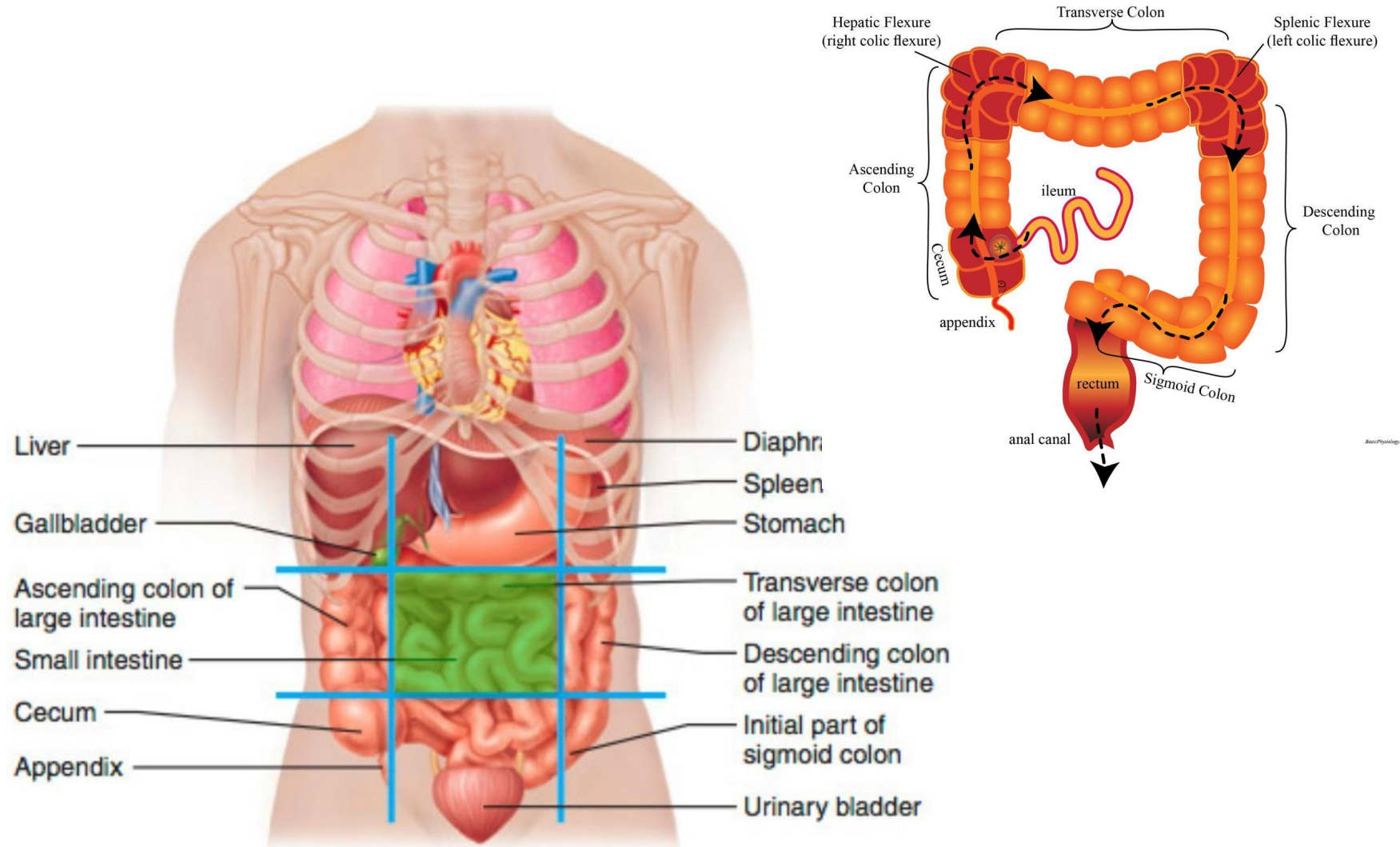
- Blood supply of the ascending colon
- Venous drainage



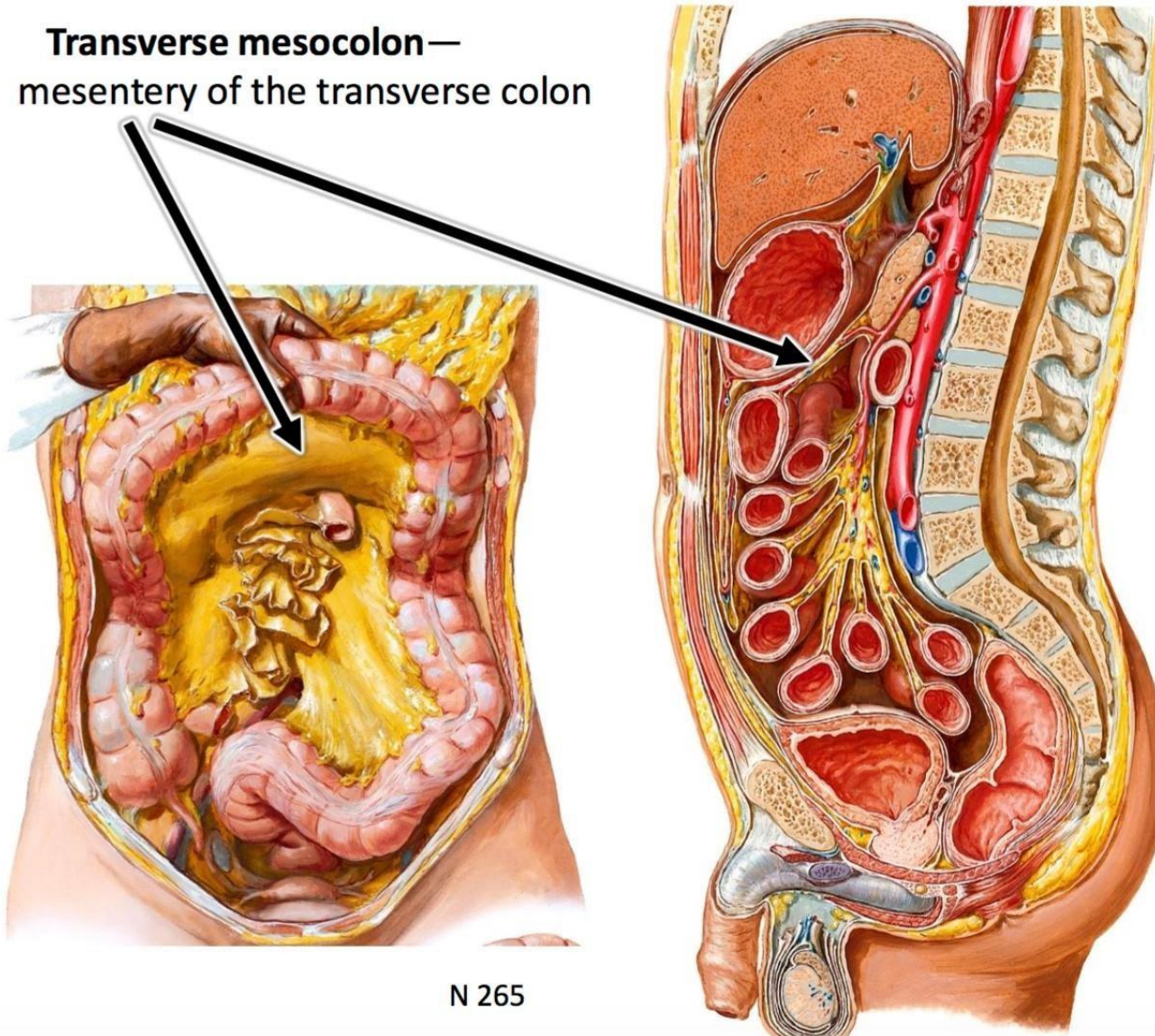
✱ Transverse colon

- The students should know and identify the :
 1. Site and Position
 2. Peritoneal Relations
 3. Features
 4. Relations
 5. Blood supply

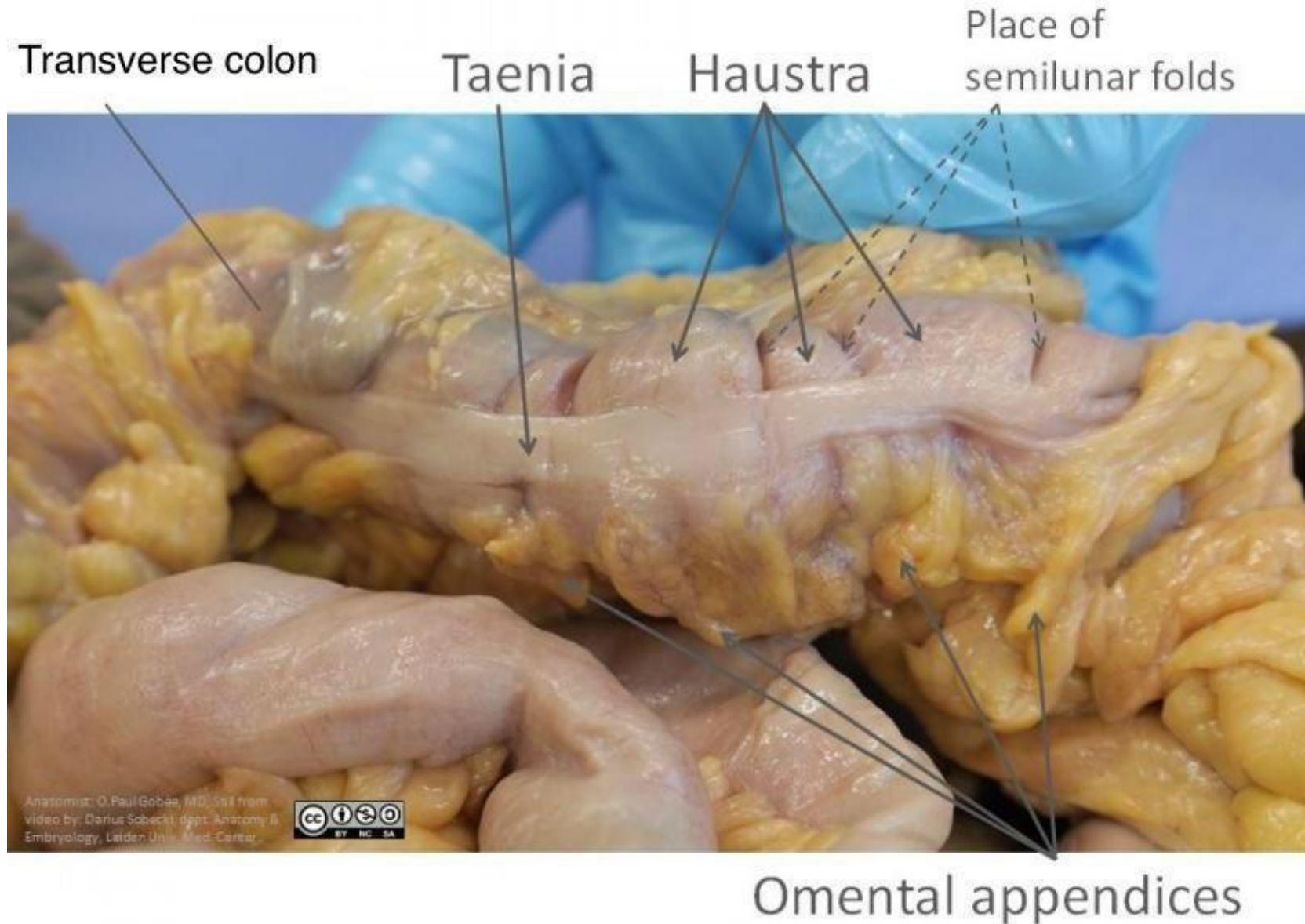
- Site and Position of the Transverse Colon



- Peritoneal Relations (transverse mesocolon)

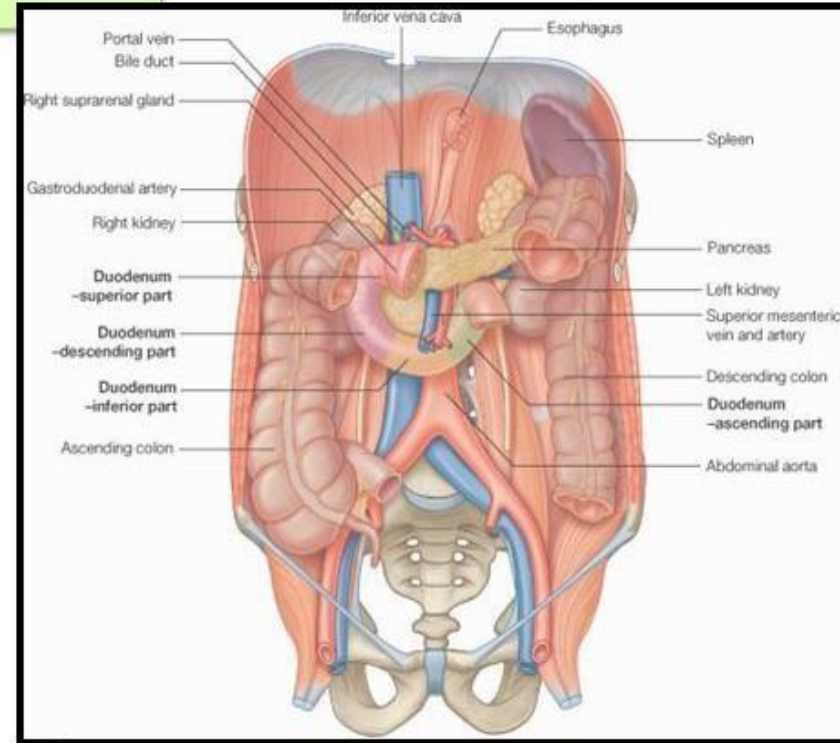
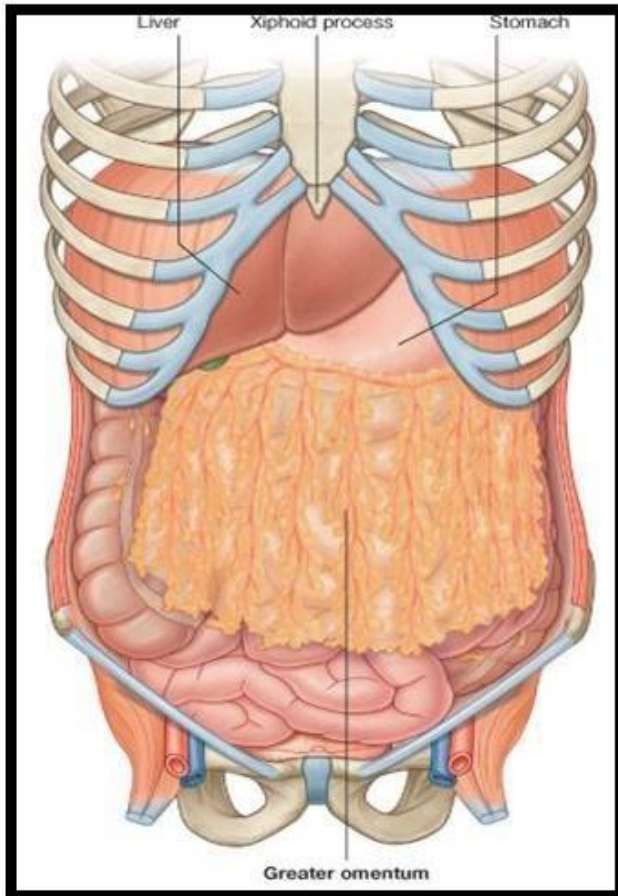


- Taenia coli



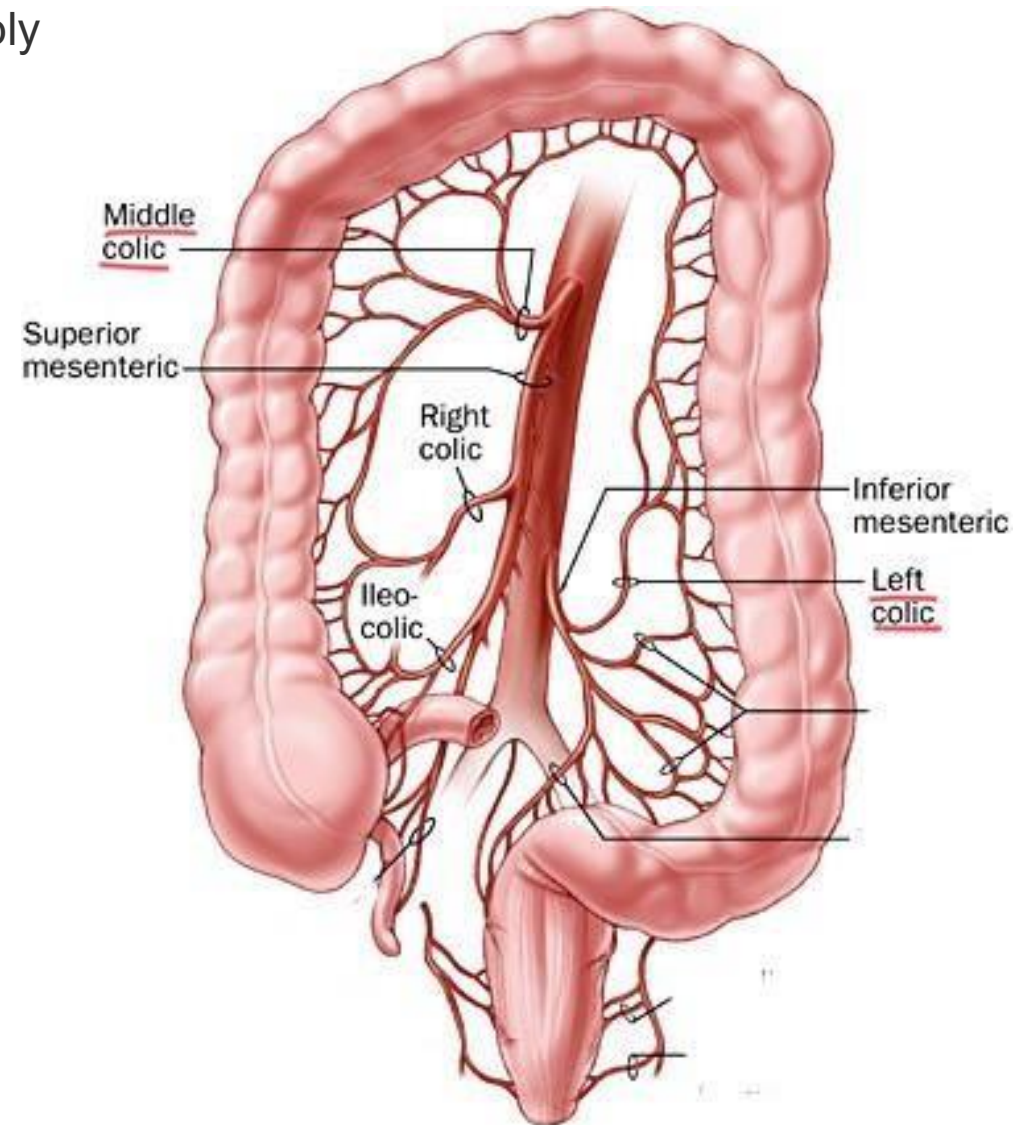
- Relations of Transverse colon

Anterior: greater omentum, anterior abdominal wall

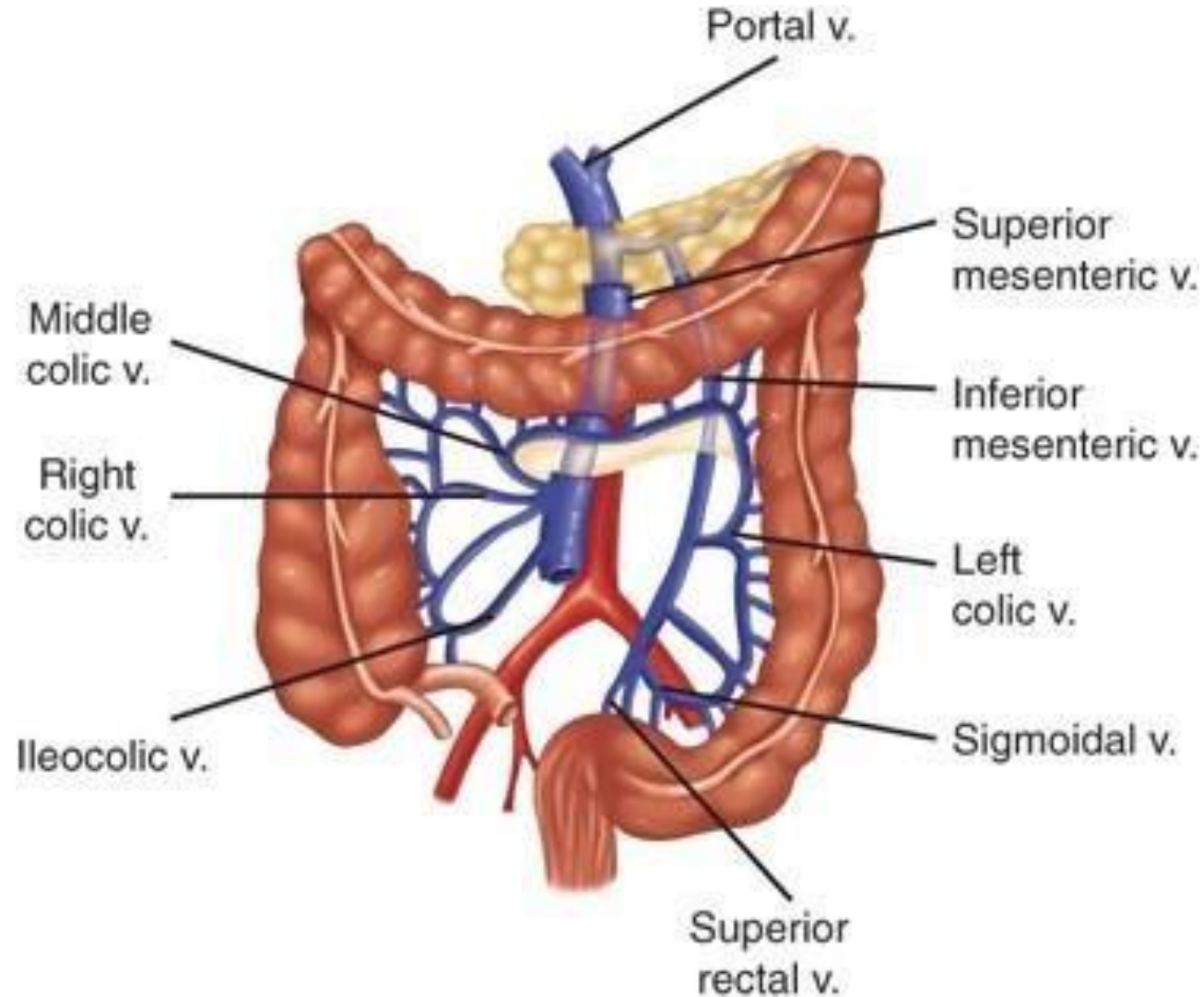


Posterior: 2nd part of duodenum, pancreas & superior mesenteric vessels.

- Blood supply of the Transverse colon
- Arterial supply



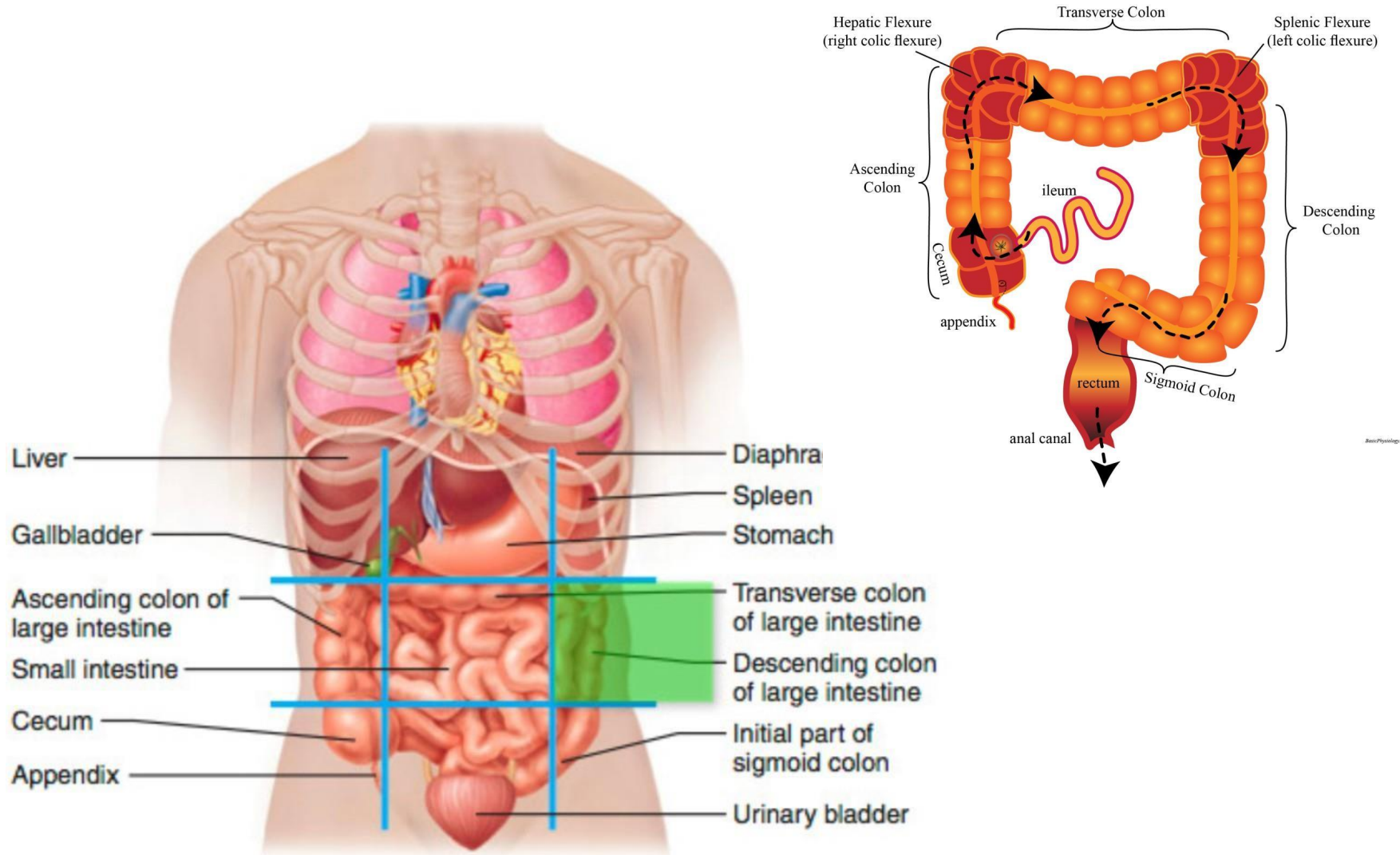
- Blood supply of the Transverse colon
- Venous drainage



✱Descending Colon

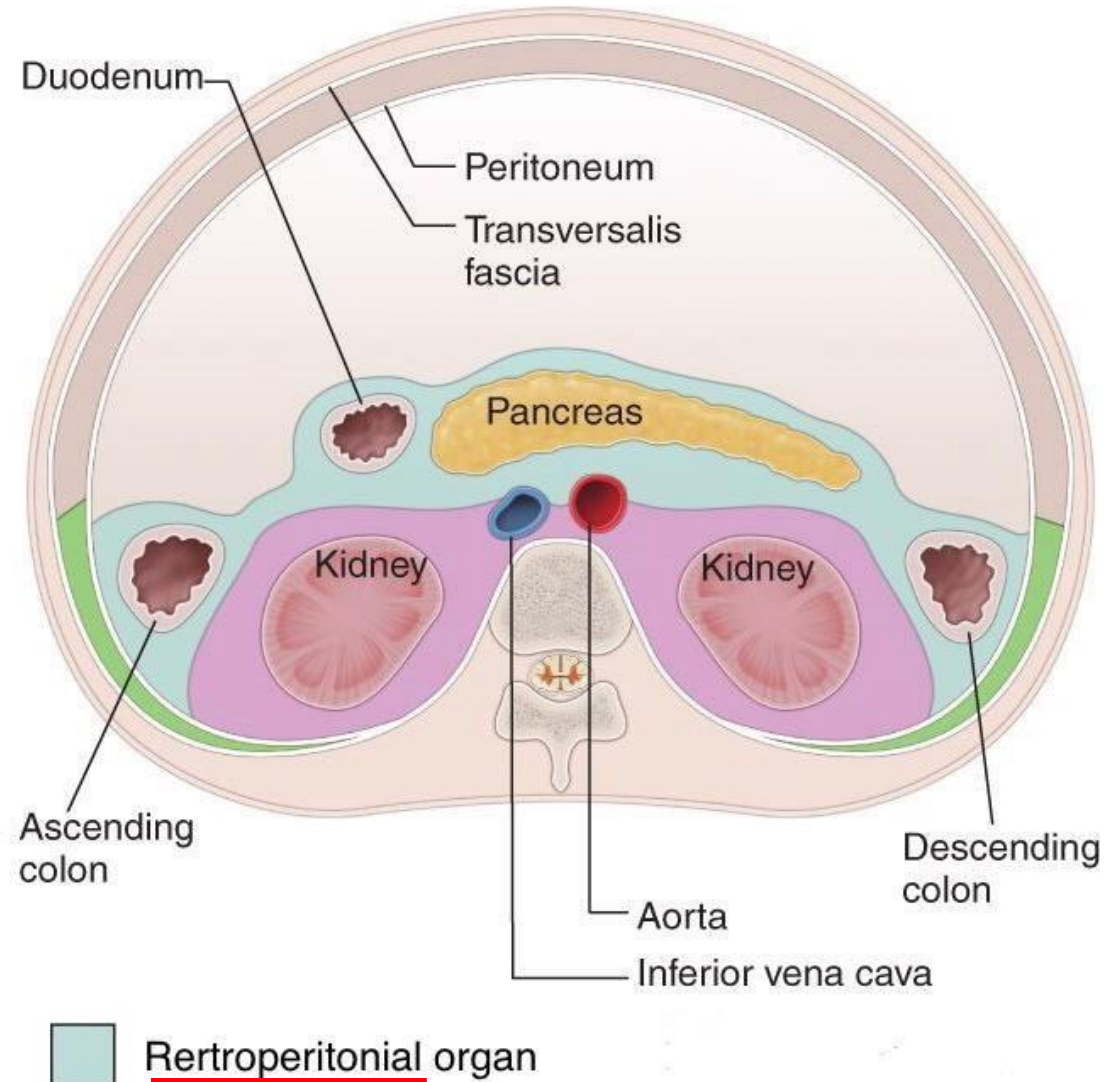
- The students should know and identify the :
 1. Site and Position
 2. Peritoneal Relations
 3. Features
 4. Relations
 5. Blood supply

• Site and Position of the Descending Colon

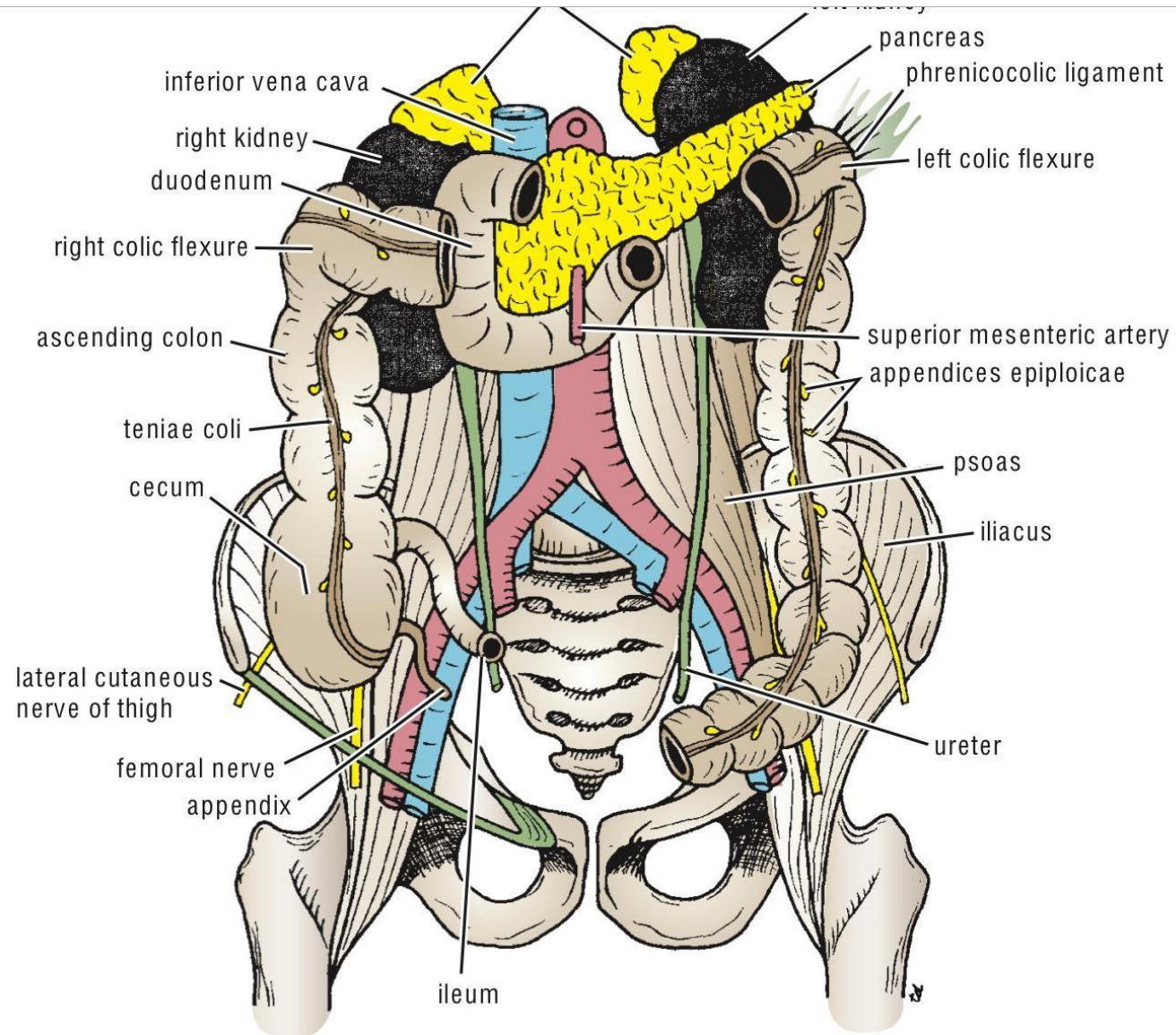


- Peritoneal Relations (Inferior view)

Right side of the body : left side of the body



- Taenia coli



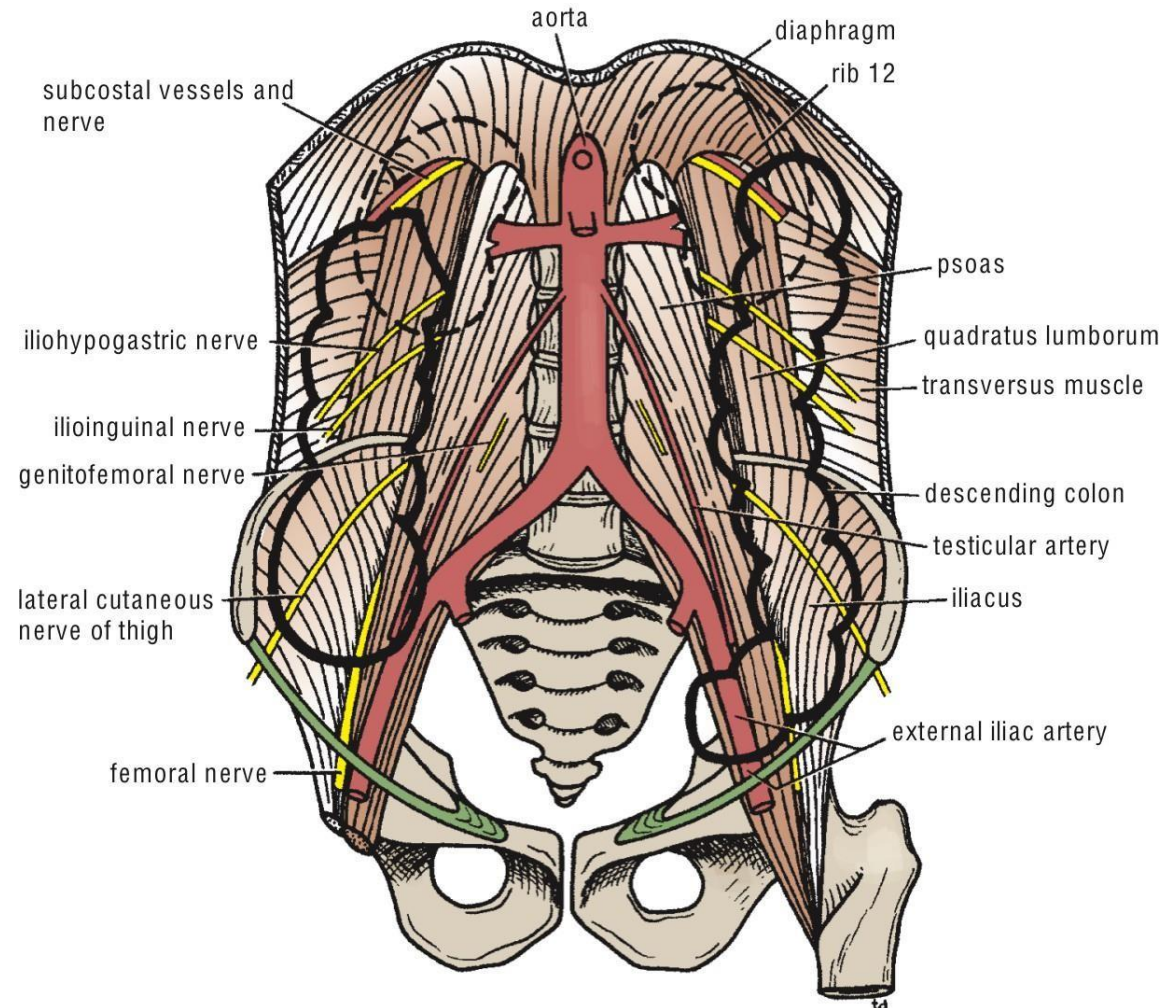
• Relations of Descending colon

- Anterior relations :

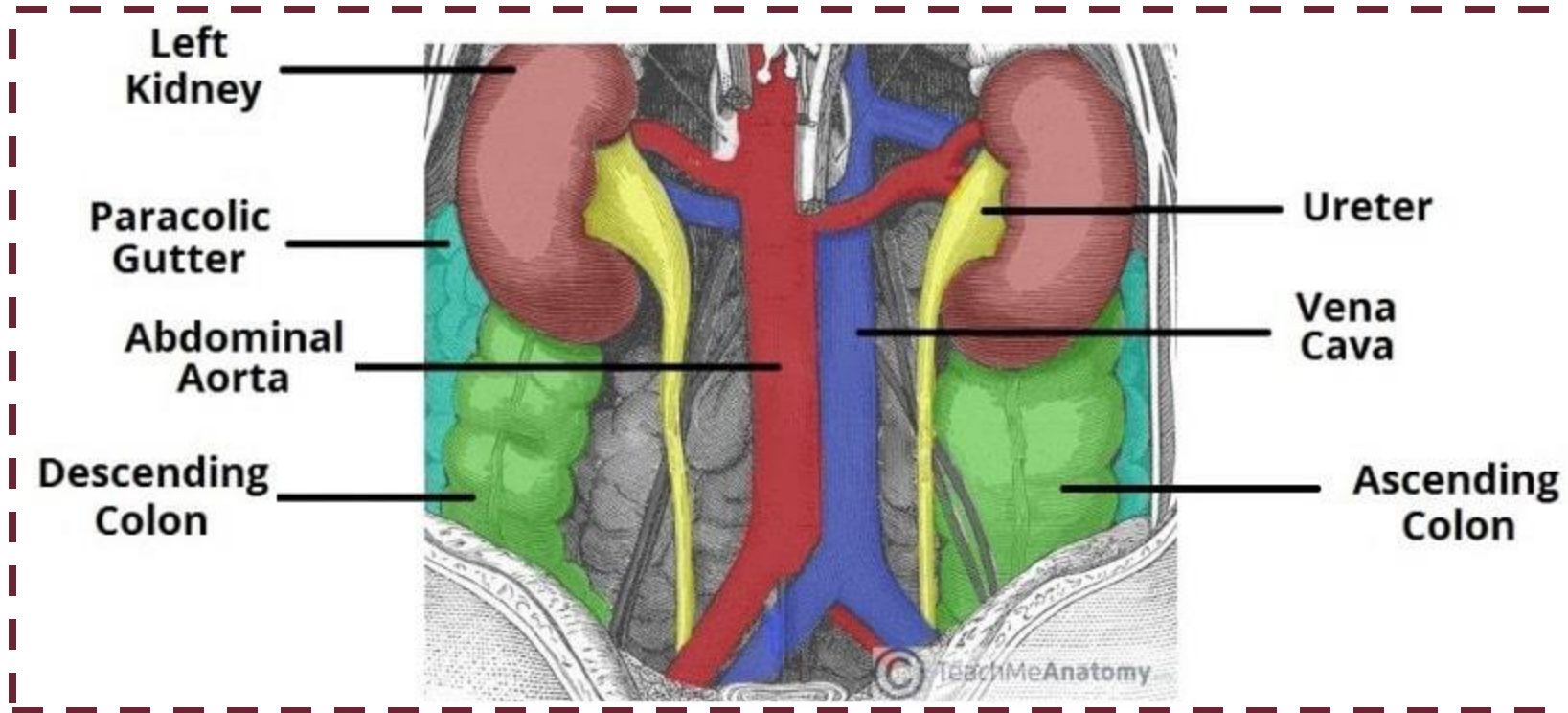
1. Coils of small intestine
2. The greater omentum
3. The anterior abdominal wall

- Posteriorly:

4. The lateral border of the left kidney
5. the origin of the transversus abdominis muscle
6. the quadratus lumborum the iliac crest
7. the iliacus
8. the left psoas
9. The iliohypogastric and the ilioinguinal nerves
10. the lateral cutaneous nerve of the thigh
11. the femoral nerve

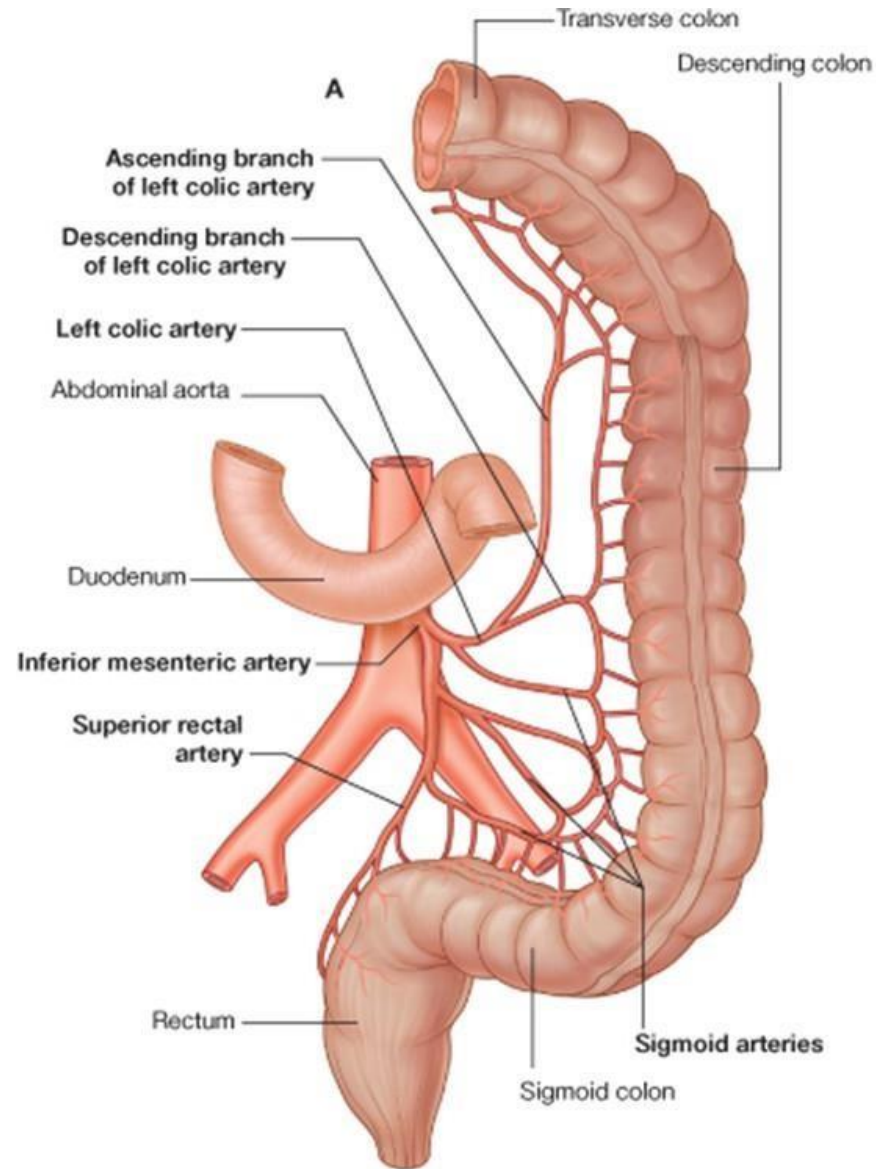


- Relations of Descending colon (posterior view)

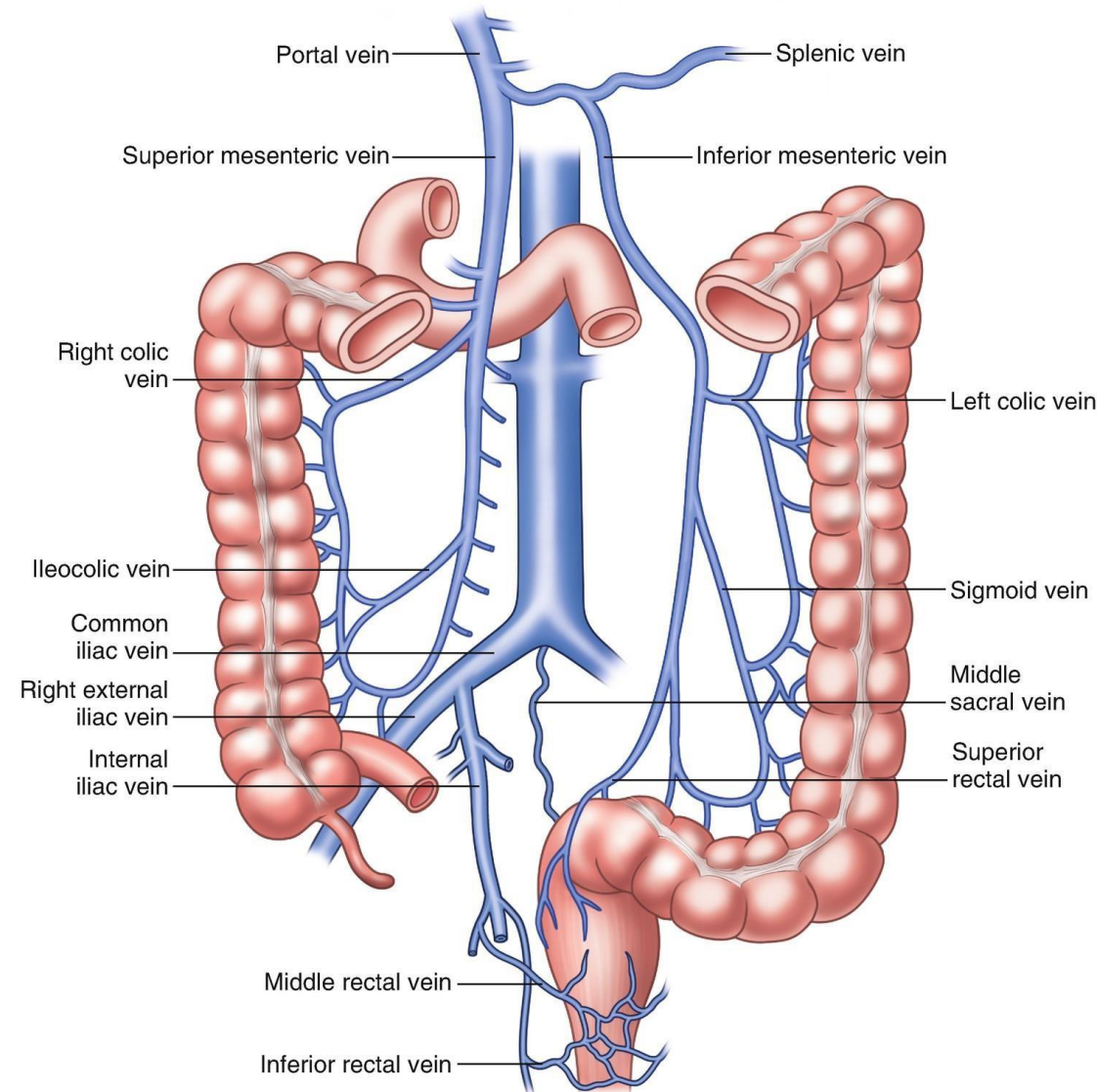


- Blood supply of the Descending colon

- Arterial supply



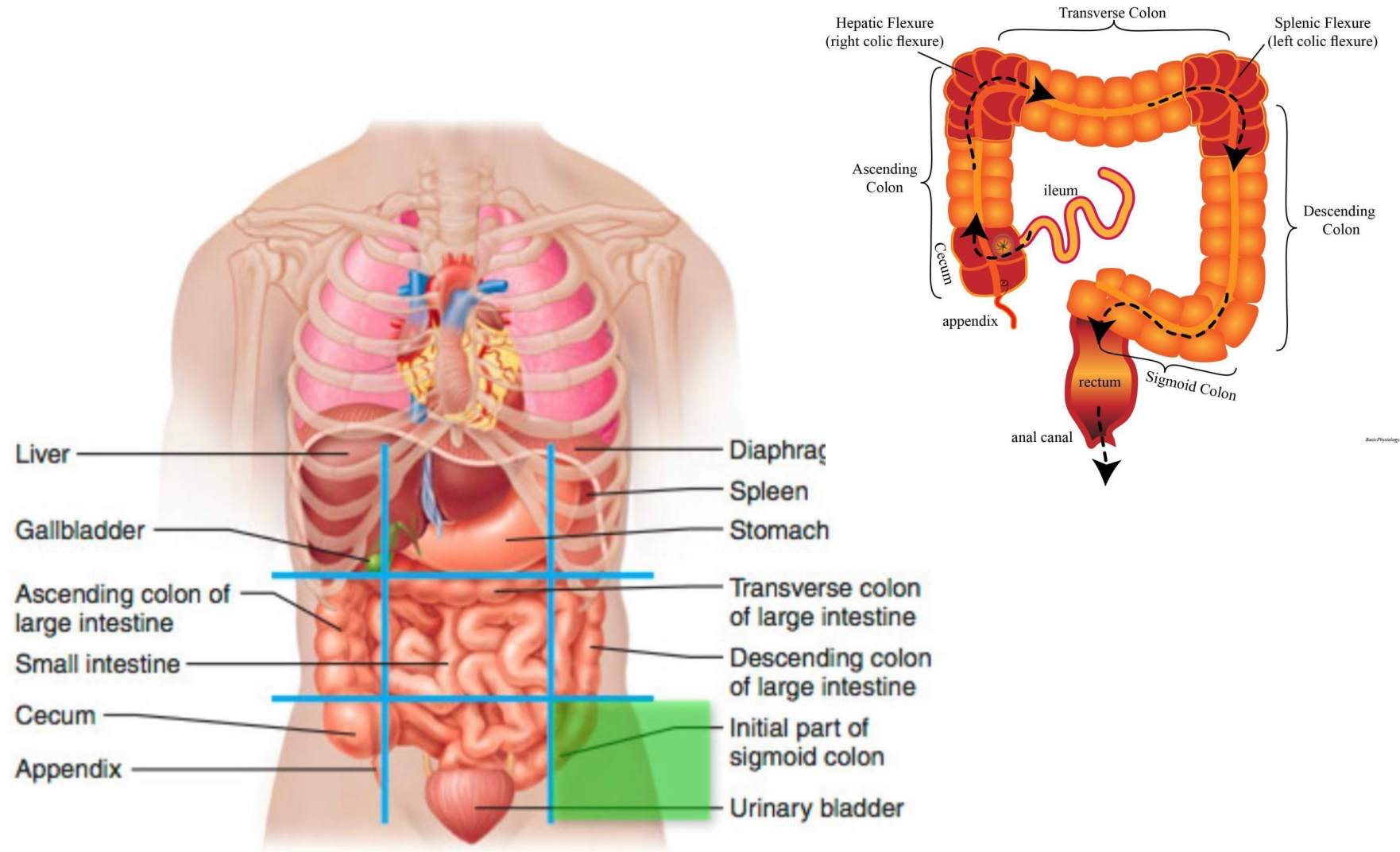
- Blood supply of the Descending colon
- Venous drainage



✱ Sigmoid Colon

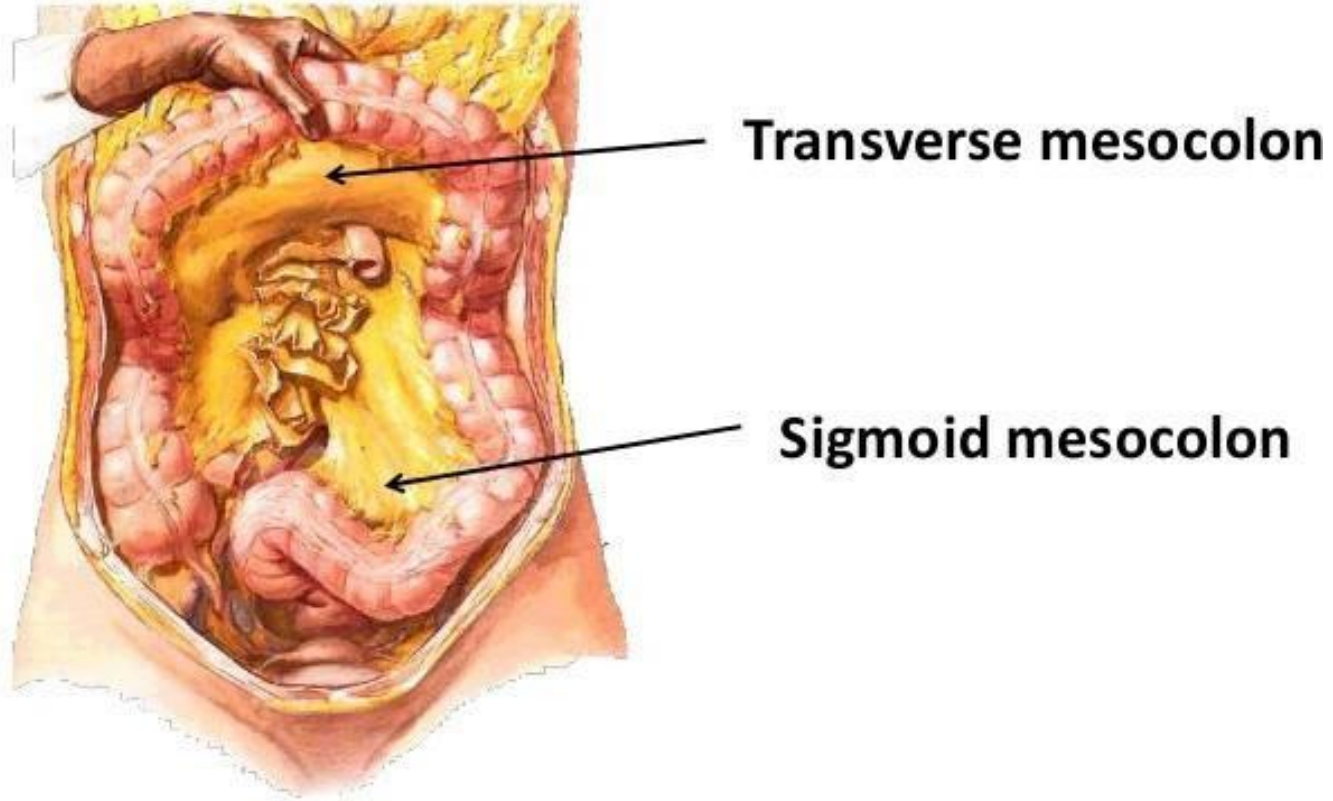
- The students should know and identify the :
 1. Site and Position
 2. Peritoneal Relations
 3. Features
 4. Relations
 5. Blood supply

• Site and Position of the Sigmoid Colon

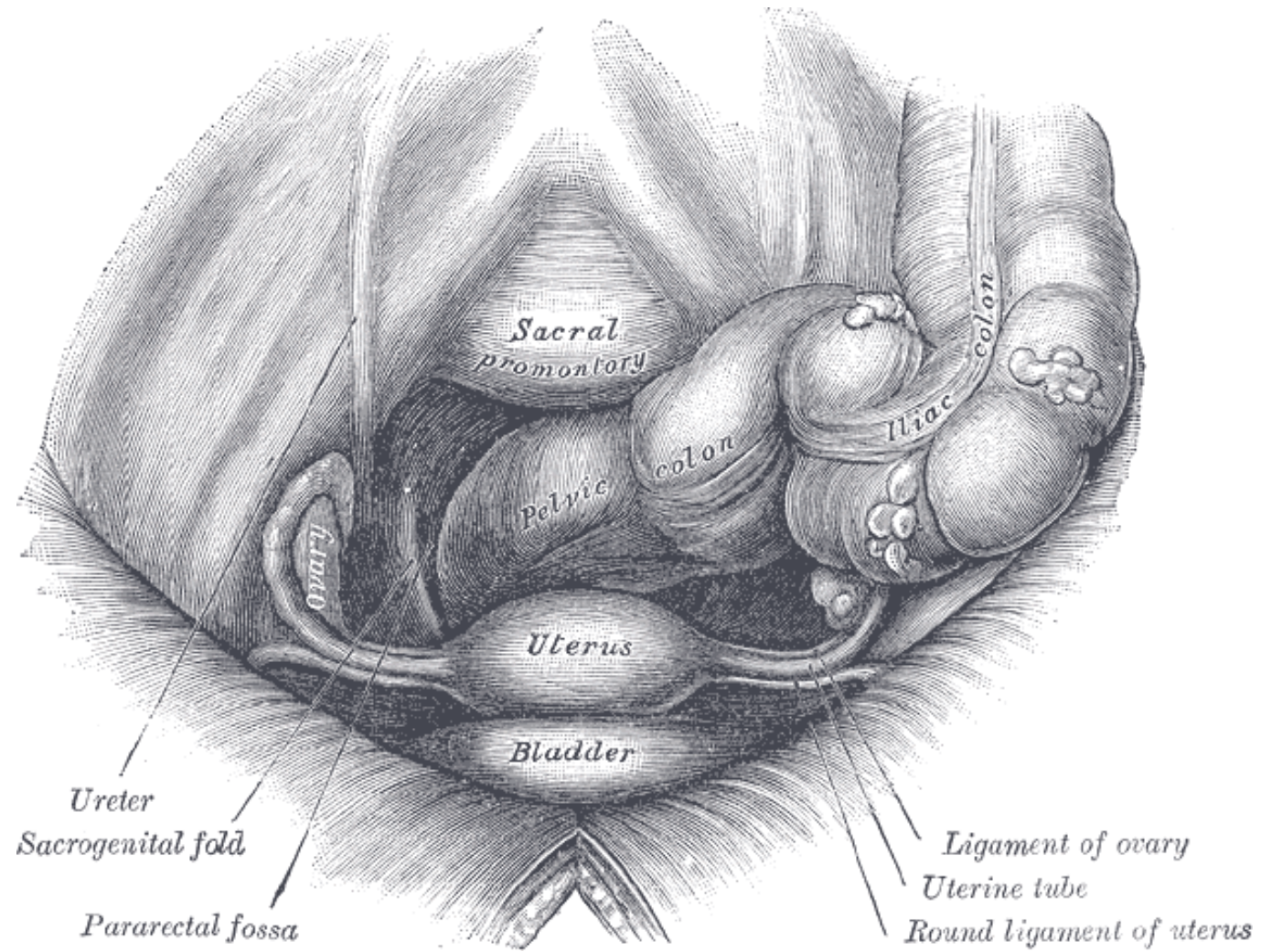


- Peritoneal Relations (sigmoid mesocolon)

Mesocolon



- **Taenia coli**



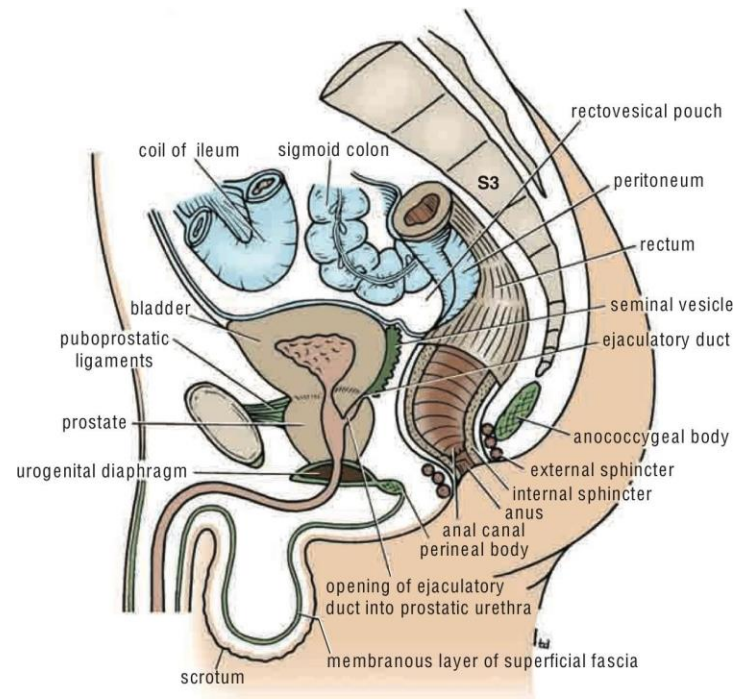
• Relations of Sigmoid colon

- Anterior relations :

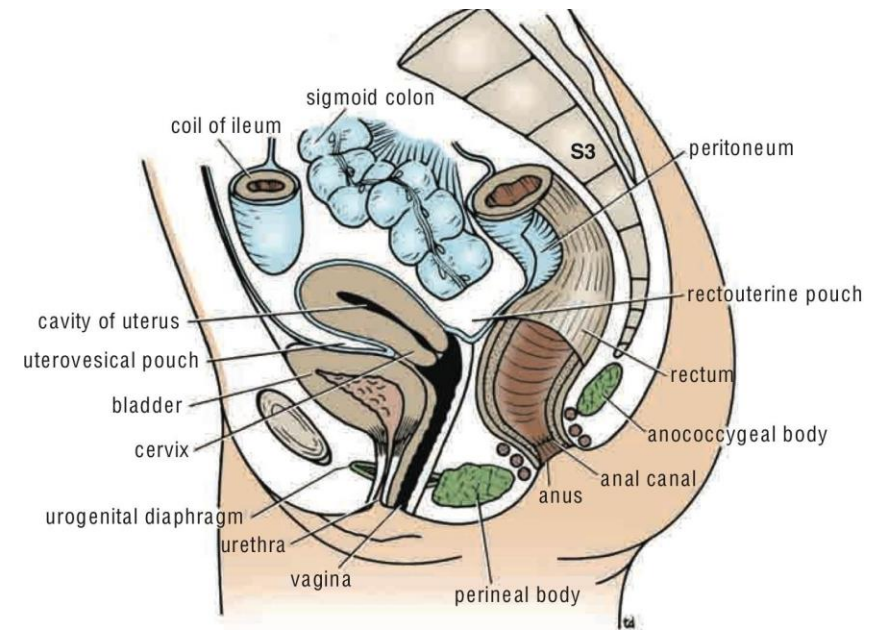
1. In the male, the urinary bladder;
2. In the female, the posterior surface of the uterus and the upper part of the vagina

- Posteriorly:

1. The rectum
2. the sacrum.
3. lower coils of the terminal part of the ileum.



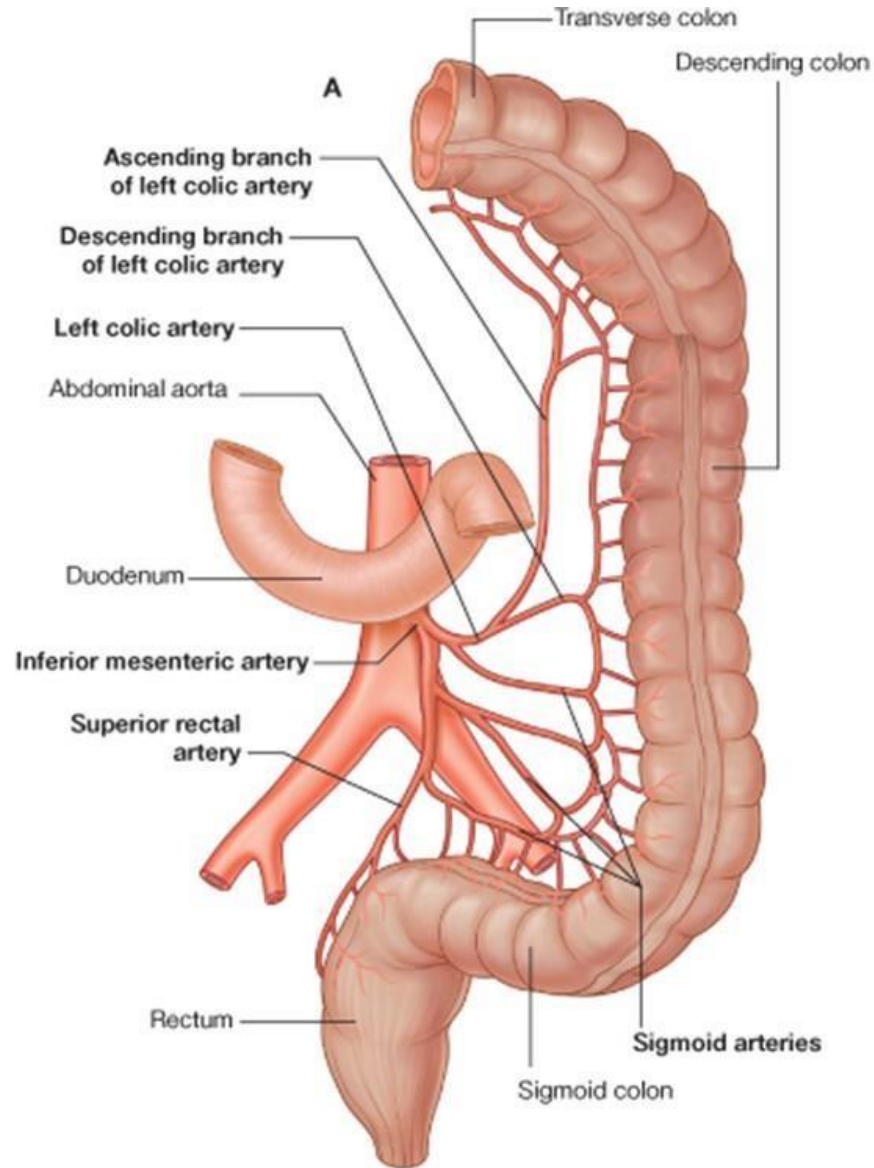
Sagittal section of the male pelvis.



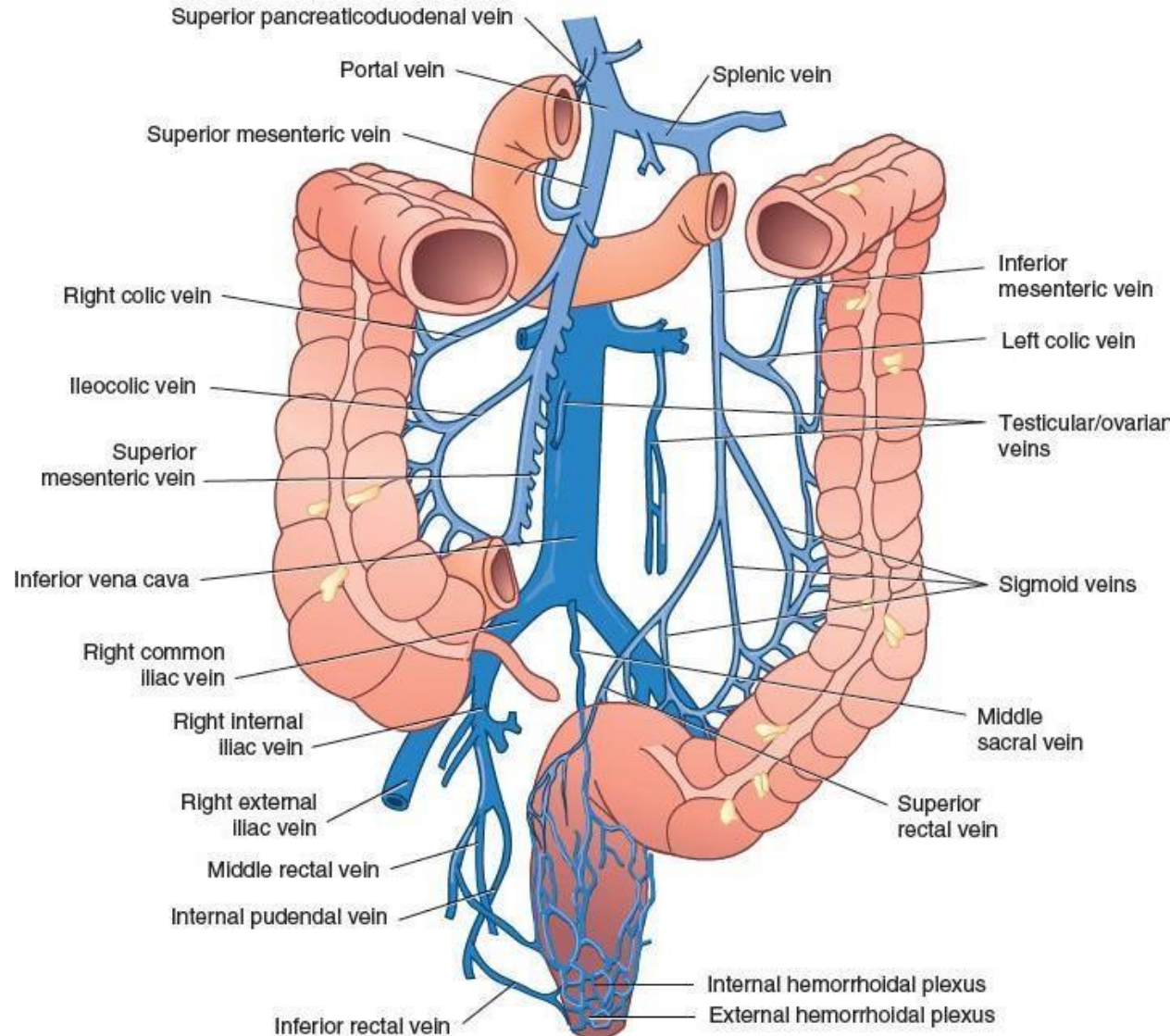
Sagittal section of the female pelvis.

- Blood supply of the Sigmoid colon

- Arterial supply



- Blood supply of the Sigmoid colon
- Venous drainage



For any feedback, scan the code or click on it.



Corrections from previous versions:

Versions	Slide # and Place of Error	Before Correction	After Correction
V0 → V1			
V1 → V2			