

Opens at	Connected to	Structure
Major duodenal papilla	Common bile duct → Ampulla of Vater	Main pancreatic duct
Minor duodenal papilla	No connection with bile duct	Accessory pancreatic duct

**Main
Pancreatic
Duct**

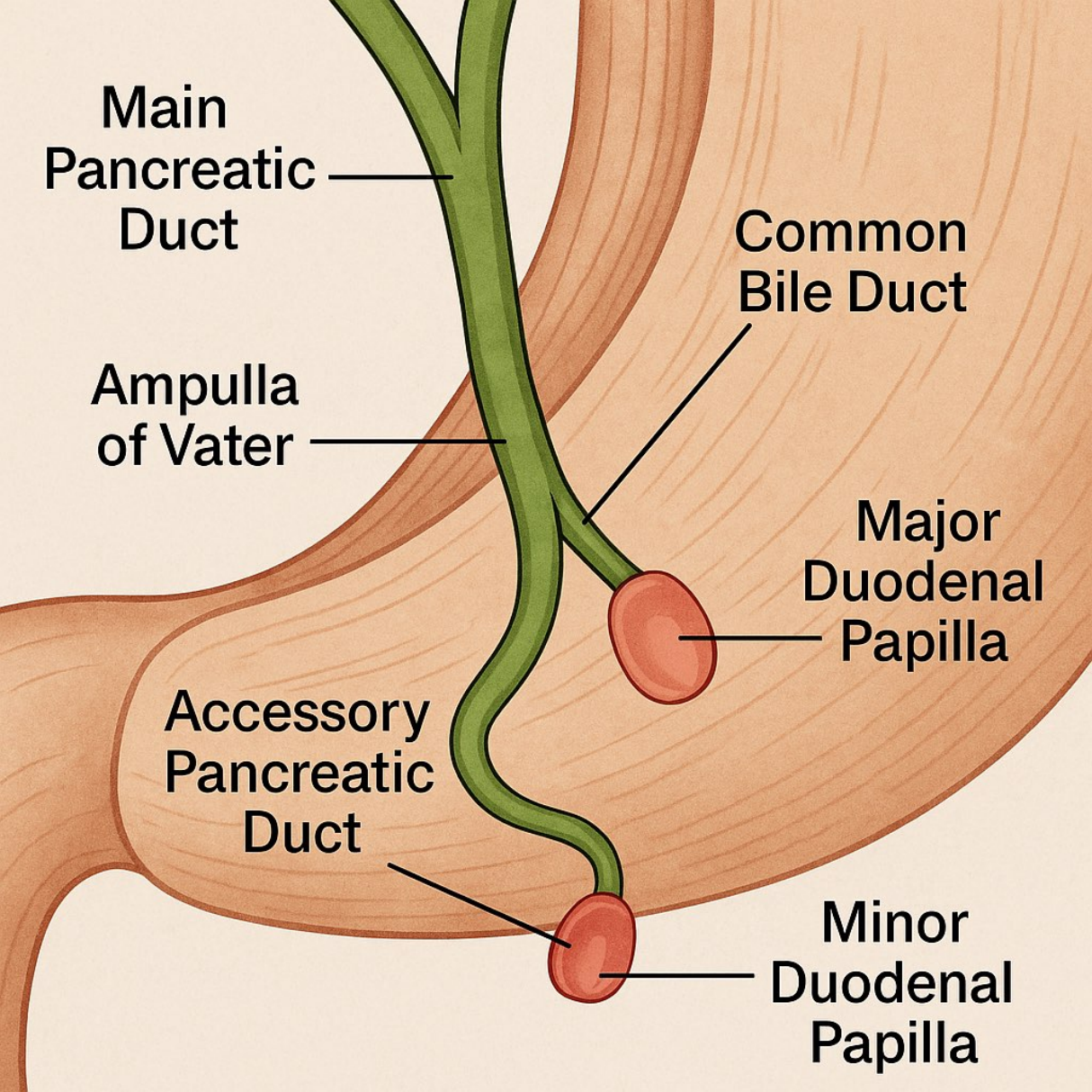
**Ampulla
of Vater**

**Common
Bile Duct**

**Major
Duodenal
Papilla**

**Accessory
Pancreatic
Duct**

**Minor
Duodenal
Papilla**



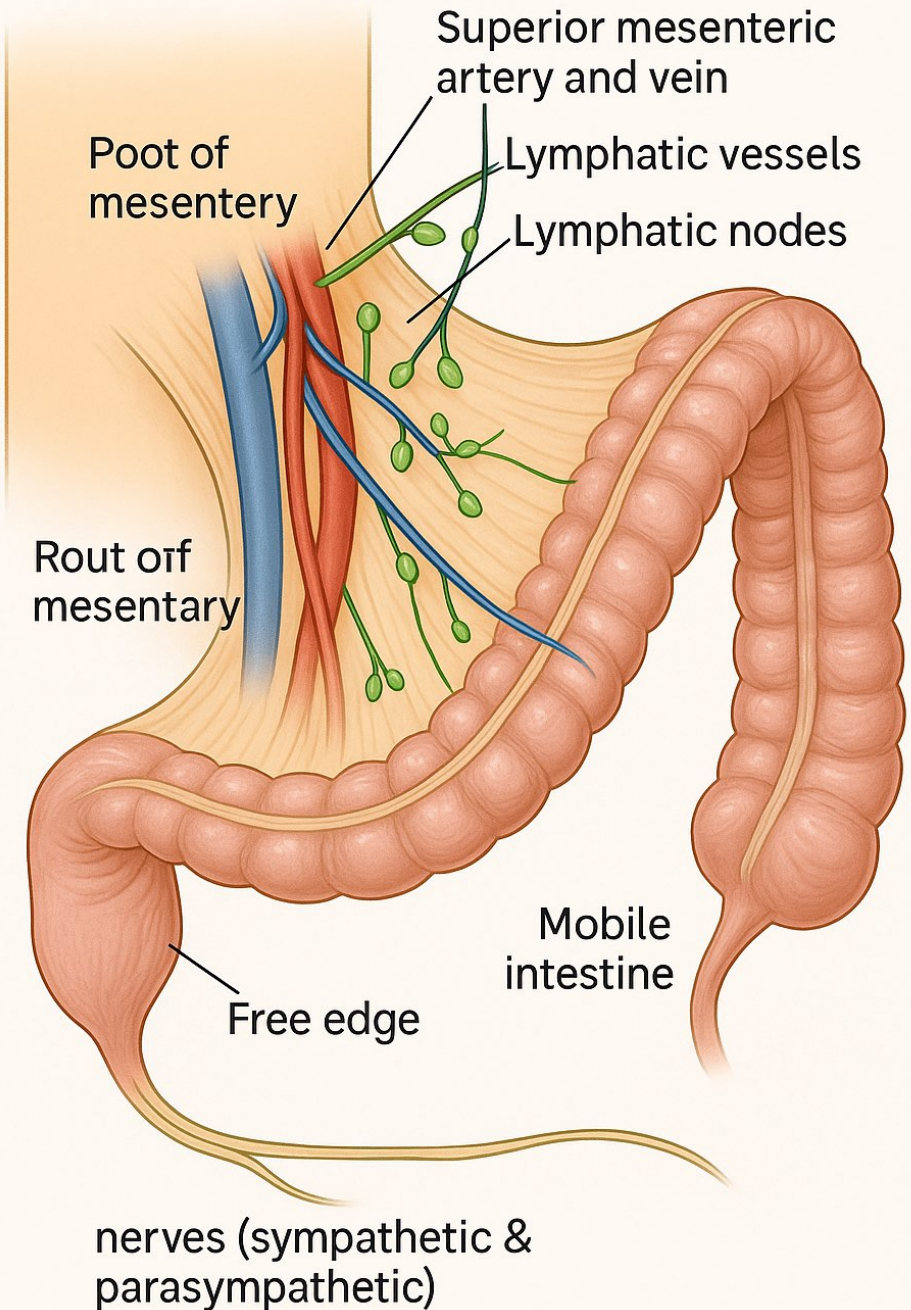
Parts of duodenum >>

Part	Length	Start Point	Direction	Vertebral Level	Anterior Relations	Posterior Relations	Superior Relations	Inferior Relations	Clinical Notes
1st Part	2 inches	Pyloroduodenal junction	Upward & backward	L1	Liver (quadrate lobe), Gallbladder	Lesser sac, Gastroduodenal artery, CBD, Portal vein, IVC	Epiploic foramen	Head of pancreas	Common site of duodenal ulcers; posterior perforation may cause hemorrhage
2nd Part	3 inches	End of 1st part	Vertically downward	L1 to L3	Gallbladder, Liver, Transverse colon, Jejunum coils	Right kidney hilum, Right ureter	-	-	Ampulla of Vater located here; ERCP access site
3rd Part	4 inches	End of 2nd part	Horizontally to the left	L3	Root of mesentery, SMA vessels, Jejunum coils	Aorta, IVC, Right psoas, Right ureter	Head of pancreas	Jejunum coils	Retroperitoneal; crosses major vessels like aorta & IVC
4th Part	1 inch	End of 3rd part	Upward to the left	L3 to L2	Beginning of mesentery root, Jejunum coils	Left psoas, Sympathetic chain, Aorta	Uncinate process of pancreas	-	Fixed by ligament of Treitz; marks start of jejunum

Blood supply & veins & lymphatic drainage for duodenum >>>

Category	Region Covered	Main Sources
Arterial Supply	Duodenum (divided into upper and lower halves)	- Upper half: from Celiac trunk → Gastroduodenal artery → Superior pancreaticoduodenal artery - Lower half: from SMA → Inferior pancreaticoduodenal artery
Venous Drainage	Entire duodenum (follows arterial supply)	- Upper half: into portal vein via superior pancreaticoduodenal vein - Lower half: into SMV → portal vein
Lymphatic Drainage	Entire duodenum (follows arterial supply)	- Drains to pancreaticoduodenal lymph nodes → celiac lymph nodes (upper) - And to superior mesenteric lymph nodes (lower) → intestinal trunk → cisterna chyli → thoracic duct
Nerve Supply	Entire duodenum (autonomic and enteric systems)	- Sympathetic : from greater splanchnic nerves → celiac and superior mesenteric plexuses - Parasympathetic : via vagus nerve - Enteric (local control) : via Auerbach's and Meissner's plexuses

Contents of the mesentery



Jejunum and ileum difference >>>

Feature	Jejunum	Ileum
Location	Upper part	Lower part/pelvis
Wall Thickness	More	Less
Arcades in Mesentery	Less <div> Long vasa recta Simple arcada </div>	More <div> Short vasa recta Complex arcada </div>
Fat in Mesentery	Less	More
Diameter	Wider	Smaller
Villi	Numerous	Less numerous
Plicae Circularis	More prominent	Less prominent
Lymphatic Follicles	No or few	Peyer's patches present

Lymph Drainage of jejunum & ileum>>>

Jejunum & Ileum



Mesenteric Lymph Nodes



Superior Mesenteric Nodes



Intestinal Trunk



Cisterna Chyli



Thoracic Duct

The thoracic duct ascends and eventually drains into the venous angle at the level of the **left brachiocephalic vein**, where it returns the lymph to the bloodstream.