

Vibrios, Campylobacters, Helicobacter and Associated Bacteria

Coma-shaped single flagella. S-shaped.

gram (-). الفرق مع probacterini

- Catalase (+)
- Oxidase (+)
- not straight bacilli (curved).
- motile through flagella.

spiral-shaped multiple flagella at one pole

- لا تسروا أهل غزّة واليهين
والهفاوة من دياركم

By: Nader Alaridah MD, PhD

Overview

- Present at surface water. (contaminated water).
- Also animals (عز، الدجاجة) are reservoir

- These species are gram-negative rods that are all widely distributed in nature.

Shock/Acidosis (صدمة/حموضة) ← dehydration (جفاف) ← majority is Asymptomatic
↓
• cholera is the most dramatic diarrheal disease bacterial cause can take place in human.

- Vibrio cholerae produces an enterotoxin that causes cholera, a profuse watery diarrhea that can rapidly lead to dehydration and death.

- Campylobacter jejuni is a ^{S shape} ^{most.} common cause of enteritis in humans.
(المغزوون يتبعون لحوم الدجاج) ↓ gastro

bloody diarrhea (inflammatory)
enterocolitis
↓
gastro

* The most common cause of gastroenteritis:
- Generally → viral
- between bacteria → Campylobacter

- Less commonly, Aeromonas and, rarely, Plesiomonas have been associated with diarrheal disease in humans.

- Helicobacter pylori has been associated with gastritis and duodenal ulcer disease. + MALT + Adenocarcinoma.
Peptic ulcer

THE VIBRIOS

Clinically Important Vibrio Species:

Vibrio parahaemolyticus

- Most common cause of seafood-related gastroenteritis (food poisoning).
- Lives in high-salinity (salty) water, higher than *Vibrio cholerae* types O1 and O139.
- Common in marine environments with colorful sea organisms (like algae or coral).

Vibrio vulnificus

- Causes wound infections and can lead to bloodstream infections (sepsis).
- Especially dangerous in patients with liver cirrhosis.
- Can also cause liver abscesses.

Vibrio alginolyticus

- Causes eye, ear, and wound infections, especially after sea water exposure.

- **Vibrios** are among the most common bacteria in **surface waters worldwide**.
أكثر بكتيريا موجودة على سطح البحر خاصة في تركيز الملح فيها عالي.
- *Vibrio* cause a number of important infectious syndromes. Classic among them is cholera, a devastating diarrheal disease caused by *Vibrio cholerae* that has been responsible for seven global pandemics and much suffering over the past two centuries and remains a significant public health concern in the developing world today.
- ***V. cholerae* serogroups O1 and O139 cause cholera in humans**, and other vibrios may cause soft tissue infections, sepsis or enteritis.
→ O1/O139 Polysaccharide is the toxin.
→ Cause 7 pandemics
- Non O1/O139 cause cholera like disease (Rarely)
- **Other important *Vibrio* species that associated primarily with gastrointestinal include *V. parahaemolyticus*, the most common cause of Sea-foodborne (raw fish or shellfish) gastroenteritis in Asia, and *V. vulnificus* (oysters), a cause of severe sepsis in patients with cirrhosis and primary wound infection (*V. vulnificus* is Latin for "wound maker.") and *V. alginolyticus* occasionally causes eye, ear, and wound infections.**
most common cause for (البترية اليمية مرضي) تصمم من المأكولات البحرية

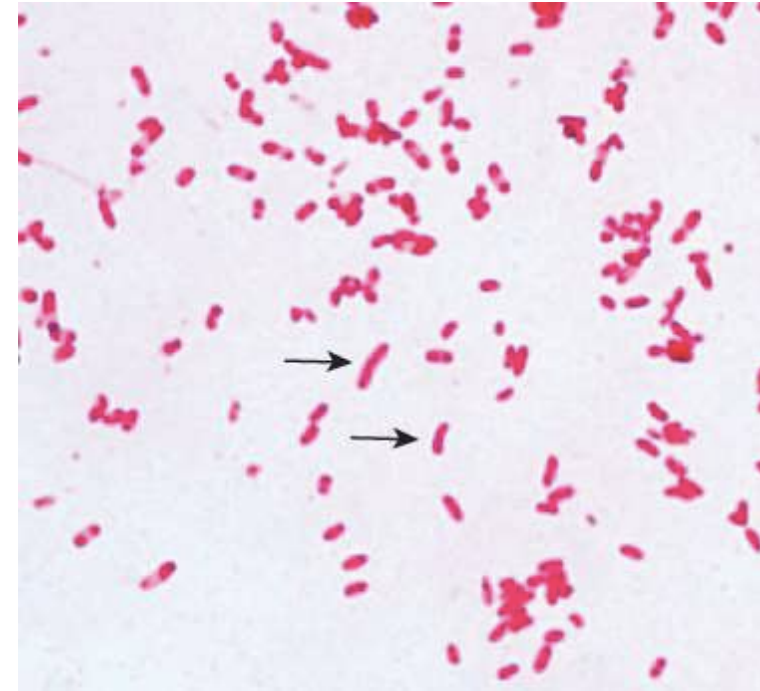
VIBRIO CHOLERAЕ

Darting movement refers to the sudden, fast, and jerky motion seen under the microscope.

This type of movement is characteristic of Vibrio species and is often described as "shooting star motility."

- The epidemiology of cholera closely parallels the recognition of V cholerae transmission in water and the development of sanitary water systems.
- V cholerae is a comma-shaped, curved rod 2–4 μm long. It is actively motile by means of a polar flagellum. On prolonged cultivation, vibrios may become straight rods that resemble the gram-negative enteric bacteria.

- Rapid movement, single flagella comma shaped curved
- look like fish in stream of water.



O1, O139

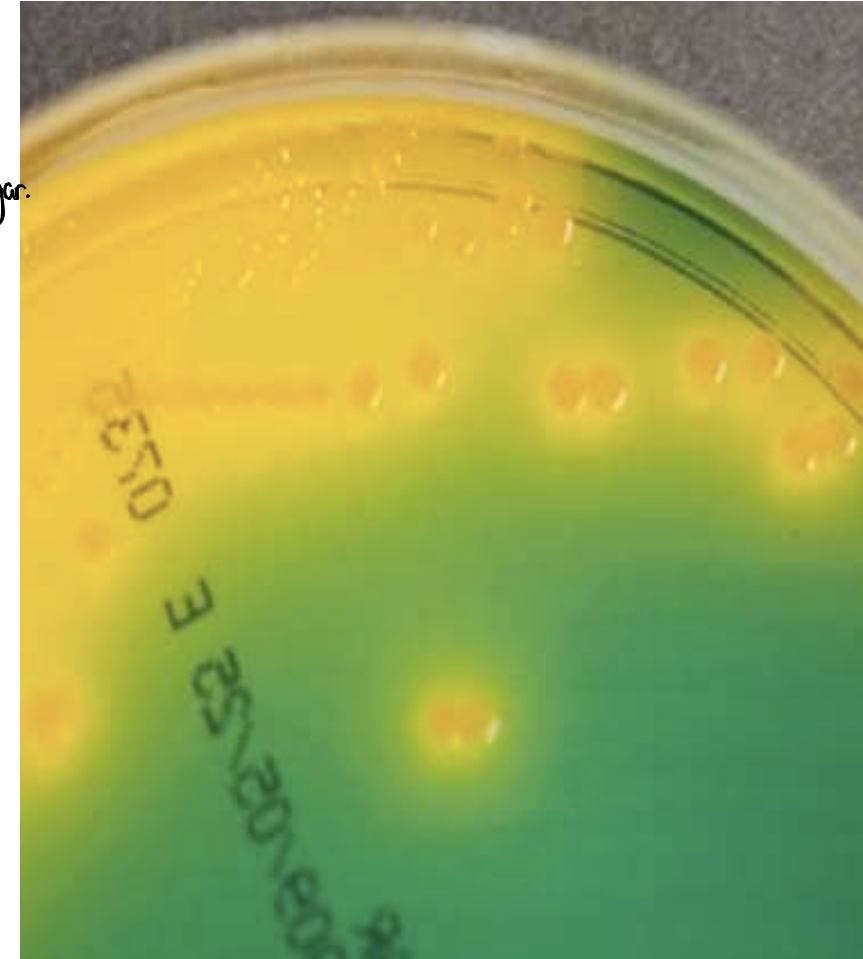
- Characteristically, vibrios grow at a very high pH (8.5–9.5) and are rapidly killed by acid. - We could use it for isolation on agar.
- Sensitive for stomach acidity.

- V cholerae produces convex, smooth, round colonies that are opaque and granular in transmitted light.

د عری بیج (Stool) Selective agar.
Selective agar.

- V cholerae grows well on thiosulfate-citrate-bile-sucrose (TCBS) agar, a media selective for vibrios, on which it produces yellow colonies (sucrose fermented) that are readily visible against the dark-green background of the agar.

باله من لونه الأخضر



- A positive oxidase test result is a key step in the preliminary identification of *V. cholerae* and other vibrios.
- *Vibrio* species are susceptible to the compound O/129 (2,4-diamino-6,7-diisopropylpteridine phosphate), which differentiates them from *Aeromonas* species, which are resistant to O/129.

- Most *Vibrio* species are **halotolerant**, and NaCl often stimulates their growth. Some vibrios are **halophilic**, requiring the presence of NaCl to grow.
(Vibrio الزعيني الزاوي) *more water* *require ↑ [NaCl] for their growth. ≈ 8/9 %.*
(مقاومة لدرجة عالية) means they can ^{تحمل} incur certain concentration ^{not high as other types ≈ 6%.} at 100cl (as water surface), Ex: *V. cholera*.

خارجي بالاعتماد: خلية بالاعتماد *Vibrio O1, O139 can multiply freely in water up to (3-4 weeks), presence of fish make better growth condition.*

Antigenic Structure and Biologic Classification

• this is non-inflammatory diarrhea (toxin-mediated disease), O1-O139 able to elaborate cholera toxins encoded by CTX genes

- ❖ Many vibrios share a single heat-labile flagellar **H** antigen. Antibodies to the H antigen are probably not involved in the protection of susceptible hosts.
- ❖ V cholerae has **O** lipopolysaccharides that confer serologic specificity. There are at least 206 O antigen groups.
 - V cholerae strains of **O** group **1** and **O** group **139** cause classic cholera; occasionally, non-O1/non-O139 V cholerae causes cholera-like disease. *عل 6 أوبئة بنارنج البشرية* *capsule 0* *milder than O1.* *rarely (Asymptomatic disease).*
 - Antibodies to the O antigens tend to protect laboratory animals against infections with V cholerae.
 - Two **biotypes** of V. cholerae **O1**, ^①classical and ^②El Tor, are distinguished. Each biotype is further subdivided into two serotypes, termed Inaba and Ogawa.

Vibrio cholerae Enterotoxin

bacteremia

- Cholera toxin, a potent protein enterotoxin elaborated by the organism in the small intestine with a molecular weight (MW) of about 84,000, consisting of subunits A (MW,28,000) and B.

- The genes for V cholerae enterotoxin are on the bacterial **chromosome**.

Horizontal gene transfer
by being infected with
bacteriophage that carry CRJ gene
and incorporated inside bacteria
Chromosome.

Generally, it's Phage transduced.
So we may find O1, O139 without the ability to elaborate cholera toxins.

Mechanism of Cholera toxin as LT toxin by E. coli

- Ganglioside GM1 serves as the mucosal receptor for subunit B, which promotes entry of subunit A into the cell. Activation of subunit A1 yields increased levels of intracellular cyclic adenosine monophosphate (**cAMP**) and results in prolonged hypersecretion of water and electrolytes.

electrolytes (السوائل) } The most dramatic diarrhoea
"dramatic"!

بالاضيق
نفسر هنا
hypersecretion
for fluid + electrolyte

- Under natural conditions, *V. cholerae* is pathogenic only for humans. A person with normal gastric acidity may have to ingest as many as 10^{10} or more *V. cholerae* to become infected when the vehicle is water because the organisms are susceptible to acid.
- When the vehicle is food, as few as 10^2 – 10^4 organisms are necessary because of the buffering capacity of food.
- The toxin-coregulated pilus (TCP), so named because its synthesis is regulated in parallel with that of cholera toxin, is essential for *V. cholerae* to survive and multiply in (colonize) the small intestine.
- The organisms do not reach the bloodstream but remain within the intestinal tract.
- Virulent *V. cholerae* organisms attach to the microvilli of the brush border of epithelial cells. There they multiply and liberate cholera toxin and perhaps mucinases and endotoxin.

Clinical Findings

- The burden of disease is often greatest during “cholera seasons” associated ^{And in wars.} with high temperatures, heavy rainfall, and flooding, but cholera can occur year-round.
- About 50% of infections with classic V cholerae are asymptomatic, as are about 75% of infections with the El Tor biotype. ^(Asymptomatic carrier)
- The incubation period is 12 hours–3 days for persons who develop symptoms, depending largely on the size of the inoculum ingested.
- There is a sudden onset of nausea and vomiting and profuse diarrhea with abdominal cramps. Stools, which resemble “rice water,” contain mucus, epithelial cells, and large numbers of vibrios.

زگی رز متعوع بی
(typical for cholera)

- There is rapid loss of fluid and electrolytes, which leads to profound dehydration, circulatory collapse, and anuria. The mortality rate without treatment is between 25% and 50%.
- The diagnosis of a full blown case of cholera presents no problem in the presence of an epidemic. However, sporadic or mild cases are not readily differentiated from other diarrheal diseases. The El Tor biotype tends to cause milder disease than the classic biotype.



Diagnostic Laboratory Tests

usually diagnosed with stool sample

• جراثيم بالاسهال قبل حركات نزوح نخل Alkaline enrichment
Culture since they grow best under Alkaline

- A. Specimens

- Specimens for culture consist of mucus flecks from stools.

- B. Smears

- Dark-field or phase contrast microscopy may show the rapidly motile vibrios.

light microscope is not enough

Shooting star motility

- C. Culture

- Growth is rapid in peptone agar, on blood agar with a pH near 9.0, or on TCBS agar, and typical colonies can be picked in 18 hours.

- D. Specific Tests

- V cholerae organisms are further identified by slide agglutination tests using anti-O group 1 or group 139 antisera and by biochemical reaction patterns.

Treatment

- The most important part of therapy consists of water and electrolyte replacement to correct the severe dehydration and salt depletion.
- Many antimicrobial agents are effective against *V cholerae*, but these play a secondary role in patient management. Oral tetracycline and doxycycline tend to reduce stool output in cholera and shorten the period of excretion of vibrios.
- In some endemic areas, tetracycline resistance of *V cholerae* has emerged; the genes are carried by transmissible plasmids. In children and pregnant women, alternatives to the tetracyclines include erythromycin and furazolidine.

(Shedding)

Prevention

hygiene and sanitation

- ❖ Provision of safe water and of facilities for sanitary disposal of feces, improved nutrition, and attention to food preparation and storage in the household can significantly reduce the incidence of cholera.

patient who was previously infected with *Vibrio cholerae* O1 or O139 develops partial, serogroup-specific immunity.

This immunity usually lasts for a maximum of 2 to 3 years.

- ❖ Currently, two oral killed cholera vaccines have been prequalified by the WHO and are available internationally :

• ٣ برامج للحماية

- WC-rBS (Dukoral.; Crucell, Stockholm, Sweden) contains several biotypes and serotypes of *V. cholerae* O1 supplemented with recombinant cholera toxin B subunit.
- BivWC (Shanchol™; Shantha Biotechnics–Sanofi Pasteur, Mumbai, India) contains several biotypes and serotypes of *V. cholerae* O1 and *V. cholerae* O139 without supplemental cholera toxin B subunit.

Both considered as whole cell vaccine which is a type of vaccine made using entire bacteria

Duration of protection for these vaccine stay 2-3 years only. [partial immunity]
and its efficacy is mostly 50%.

CAMPYLOBACTER

-invasive pathogen. (تأثيره على الجسم)

-bloody diarrhea. not watery as Cholera.

-unencapsulated.

-Fecalal route.

- من الدواجن poultry

أشيع بكتريا
The most common bacterial cause of gastroenteritis in developed countries.

- Campylobacters are motile, non-spore-forming, curved, gram-negative rods.
- Campylobacters are found in the gastrointestinal tract of many animals used for food (including poultry, cattle, sheep, and swine) and many household pets (including birds, dogs, and cats)
- Campylobacters cause both diarrheal and systemic diseases and are among the most widespread causes of infection in the world.
The way bacteria in the Campylobacteriaceae family are grouped has changed over time. Some bacteria that used to be called Campylobacter were later moved into a new group called Helicobacter. Another new group called Arcobacter was also created to classify certain related bacteria. Campylobacter, Helicobacter, and Arcobacter are three separate genera, although they were once grouped more closely.
- The classification of bacteria within the family Campylobacteriaceae has changed frequently. Some species previously classified as campylobacters have been reclassified in the genus Helicobacter. The genus Arcobacter has been created.
- The human pathogens fall into two major groups: those that primarily cause diarrheal disease and those that cause extraintestinal infection

2 types cause enterobacteriosis: 1) jejuni (jejunum).

2) coli (mainly in large bowel).

* fetus (extraintestinal infection as bacteremia + soft tissue infection)

- Campylobacter jejuni is the prototype organism in the group and is a very common cause of diarrhea in humans.

- extra intestinal*
cause bacteremia (systemic),
- Campylobacter fetus has two subspecies, fetus and venerealis. C fetus subspecies fetus is an opportunistic pathogen that causes systemic infections in immunocompromised patients. It may occasionally cause diarrhea *because of gastroenteritis.*
- خلي باللي*

- Other organisms that cause diarrheal disease include Campylobacter coli, Campylobacter upsaliensis, Campylobacter lari, Campylobacter hyointestinalis, Campylobacter fetus, Arcobacter butzleri, Arcobacter cryaerophilus, Helicobacter cinaedi, and Helicobacter fennelliae.

these cause intestinal infection not gastric as H. pylori

*✗ not in stomach.
✓ in intestine.*

CAMPYLOBACTER JEJUNI AND CAMPYLOBACTER COLI

- C jejuni and Campylobacter coli have emerged as common human pathogens, causing mainly enteritis and occasionally systemic infection.
- C jejuni and C coli cause infections that are clinically indistinguishable, and laboratories generally do not differentiate between the two species.
- Between 5% and 10% of infections reported to be caused by C jejuni are probably caused by C coli. These bacteria are at least as common as salmonellae and shigellae as a cause of diarrhea especially in the developed world.

CAMPYLOBACTER JEJUNI

- S-shaped ، النورس
- motile (Flagella).

نورس فاتح (جنتية)

حركة البرغي Corkscrew

- gram-negative rods with comma, S, or “gull wing” shapes. They are motile, with a single polar flagellum, and do not form spores.

- Selective media are needed, and incubation must be in an atmosphere with reduced O₂ (5% O₂) with added CO₂ (10% CO₂).

or we may put microaerophilic. low [O₂], high [CO₂]

them in anaerobic condition agar without catalyst which becomes microaerophilic

grow best.

thermo philic

- Incubation of primary plates for isolation of C jejuni should be at 42°C. Although C jejuni grows well at 36–37°C, incubation at 42°C prevents growth of most of the other bacteria present in feces, thus simplifying the identification of C jejuni. Several selective media are in widespread use.



Pathogenesis

Campylobacter infection can lead to several post-infectious complications such as arthritis, Guillain-Barré syndrome, and Reiter's syndrome. The bacteria adhere to the intestinal wall and invade the Peyer's patches in the small intestine, which can result in localized inflammation due to its invasive nature. Clinically, it often causes bloody diarrhea containing red and white blood cells. The infection is typically acquired through the consumption of contaminated food or drink.

Contaminated

- The infection is acquired by the oral route from food, drink, or contact with infected animals or animal products, especially poultry.
- C jejuni is susceptible to gastric acid, and ingestion of about 10^4 organisms is usually necessary to produce infection.
- Both the motility of the strain and its capacity to adhere to host tissues appear to favor disease, but classic enterotoxins and cytotoxins (cytolethal distending toxin, or CDT) appear not to play substantial roles in tissue injury or disease production.
- The organisms multiply in the small intestine, invade the epithelium, and produce inflammation that results in the appearance of red and white blood cells in the stools. Occasionally, the bloodstream is invaded, and a clinical picture similar to enteric fever develops. Localized tissue invasion coupled with the toxic activity appears to be responsible for the enteritis.

Clinical Findings

- تظهر الأعراض بعد 12-24 h من تناول طعام ملوث *Watery diarrhea* تبدأ
- *Bacteremia* *بكتيريا دم*
- *bloody diarrhea* *براز دموي*
- *حمى* *يشتد* *الأعراض* *دخول* *للأعضاء* *الغري* *وال* *Abdomen*

- A prodrome of fever, headache, myalgia, and/or malaise often occurs 12–48 h before the onset of diarrheal symptoms. profuse diarrhea that may be grossly bloody.
- Usually the illness is self-limited to a period of 5–8 days, but occasionally it continues longer.
- Most cases resolve without antimicrobial therapy; however, in about 5–10% of patients, symptoms may recur.
- Local suppurative complications of infection include cholecystitis, pancreatitis, and cystitis; distant complications include meningitis, endocarditis, arthritis, peritonitis, cellulitis, and septic abortion. All these complications are rare, except in immunocompromised hosts
- Hepatitis, interstitial nephritis, and the hemolytic-uremic syndrome occasionally complicate acute infection Certain serotypes of *Campylobacter jejuni*, such as O:19, have been linked to post-diarrheal complications like Guillain-Barré syndrome, which is a form of ascending paralysis. This happens due to the production of antibodies against the bacterial LOS (lipooligosaccharide). These antibodies cross-react with gangliosides on human peripheral nerve cells, causing damage and leading to paralysis.
- Certain serotypes of *C jejuni* have been associated with post-diarrheal Guillain-Barré syndrome, a form of ascending paralytic disease. Reactive arthritis and Reiter's syndrome may also follow acute campylobacter diarrhea.

Diagnostic Laboratory Tests

- A. Specimens The main sample used is diarrheal stool.
In immunocompromised or elderly patients, Campylobacter (especially *C. jejuni* and *C. fetus*) may also be found in blood cultures.
- Diarrheal stool is the usual specimen. *C. jejuni*, *C. fetus*, and other campylobacters may occasionally be recovered from blood cultures usually from immunocompromised or elderly patients.
- B. Smears
- Gram-stained smears of stool may show the typical “gull wing”-shaped rods. Dark-field or phase contrast microscopy may show the typical **darting motility** of the organisms.
- C. Culture
- Culture on the selective media (Skirrow's, Butzler's, Blaser's, Campy-BAP and Preston media) is the definitive test to diagnose *C. jejuni* enteritis. If another species of Campylobacter is suspected, medium without a cephalosporin should be used and incubated at 36–37° C. Cephalosporins help isolate *C. jejuni*, but can inhibit other Campylobacter species like *C. fetus*, so media without cephalosporin is used if those are suspected.

Treatment

- Fluid and electrolyte replacement is central to the treatment of diarrheal illnesses.
- Even among patients presenting for medical attention with *Campylobacter* enteritis, not all clearly benefit from specific antimicrobial therapy. Indications for therapy include high fever, bloody diarrhea, severe diarrhea, persistence for >1 week, and worsening of symptoms. A 5- to 7-day course of erythromycin is the regimen of choice.
- An alternative regimen for adults is ^{إريثروميسين erythromycin} ciprofloxacin or another fluoroquinolone for 5–7 days.
- For systemic infections, treatment with gentamicin or imipenem or chloramphenicol should be started empirically, but susceptibility testing should then be performed

HELICOBACTER PYLORI

- H pylori is a **spiral-shaped** gram-negative rod.
 - It has **multiple flagella** at one pole and is actively motile.
 - The organism has several acid-resistance mechanisms, most notably a highly expressed **urease** that catalyzes urea hydrolysis to produce buffering ammonia. H. pylori is microaerophilic (i.e., requires low levels of oxygen), is oxidase positive and catalase positive is slow-growing, and requires complex growth media in vitro.
 - H pylori is associated with antral gastritis, duodenal (peptic) ulcer disease, gastric ulcers, gastric adenocarcinoma and gastric mucosa-associated lymphoid tissue (MALT) lymphomas. It may be one initial precipitant of pernicious anemia and also may predispose some patients to iron deficiency through occult blood loss and/or hypochlorhydria and reduced iron absorption.
- B-cell lymphoma
Stomach adenocarcinoma
H. pylori is classified as a Type I carcinogen.
Its presence is strongly linked to gastric cancer.
Diseases Associated with H. pylori:
Peptic ulcers (due to inflammation and mucosal damage):
Duodenal ulcers – 90% of cases associated with H. pylori.
Gastric ulcers – 85% of cases associated with H. pylori.
Second major cause of peptic ulcers: NSAIDs (after H. pylori).
Culture & Growth:
Grows slowly – takes up to 8 days.
Cultured on the same agar as Campylobacter.
Requires a very complex supplement and microaerophilic environment.
Culture is rarely performed for H. pylori in routine practice.
Even if cultured, the organism is often not easily visible under standard lab conditions.
The relationship between pain and food helps in distinguishing the type of ulcer:
For example, timing of pain in relation to meals can suggest whether it's a gastric or duodenal ulcer.
- deficiency in the production of red blood cells through a lack of vitamin B12.
- bloody diarrhea
تشوفه فقط كت المايكرو سكوبي
اختبار الدم
منه

Habitat: Natural colonizer of the stomach.
Shape: Spiral-shaped.
Classification: Gram-negative rod.
Motility: Actively motile due to multiple flagella located at a single pole (lophotrichous).
Pathogenesis & Clinical Importance:
Urease production:
Splits urea into $\text{CO}_2 + \text{NH}_3$ (ammonia).
Ammonia neutralizes gastric acid \rightarrow helps the bacteria survive in the stomach.
Urease plays a key role in pathogenesis.
Chronic inflammation caused by *H. pylori* may lead to:
MALT lymphoma
B-cell lymphoma
Stomach adenocarcinoma
H. pylori is classified as a Type I carcinogen.
Its presence is strongly linked to gastric cancer.
Diseases Associated with *H. pylori*:
Peptic ulcers (due to inflammation and mucosal damage):
Duodenal ulcers – 90% of cases associated with *H. pylori*.
Gastric ulcers – 85% of cases associated with *H. pylori*.
Second major cause of peptic ulcers: NSAIDs (after *H. pylori*).
Culture & Growth:
Grows slowly – takes up to 8 days.
Cultured on the same agar as *Campylobacter*.
Requires a very complex supplement and microaerophilic environment.
Culture is rarely performed for *H. pylori* in routine practice.
Even if cultured, the organism is often not easily visible under standard lab conditions.
The relationship between pain and food helps in distinguishing the type of ulcer:
For example, timing of pain in relation to meals can suggest whether it's a gastric or duodenal ulcer.

Epidemiology

Around two-thirds of people have *H. pylori* in their stomach as part of the normal microbiome. This colonization can progress into multiplication of the bacteria. If this multiplication exceeds the body's immune response, it can lead to the development of disease. The likelihood of this progression depends on several factors, starting with the specific strain of *H. pylori* present. Certain strains that carry virulence factors—such as cytotoxin-associated gene A (CagA-positive), the type IV secretion system, or vacuolating cytotoxin (VacA)—are more likely to cause disease.

However, the presence of these virulence factors does not mean that disease will definitely occur, and their absence does not mean disease will not occur. They simply increase the probability of disease. In addition, host-related factors also play an important role. For example, individuals with interleukin receptor gene polymorphisms have a higher risk of progressing to active infection. Smoking is another factor that increases this probability. Altogether, these elements—bacterial virulence, genetic predisposition, immune status, and smoking—raise the chances of shifting from simple colonization to infectious disease.

- *Helicobacter pylori* colonizes the stomach in ~50% of the world's human population, essentially for life unless eradicated by antibiotic treatment.
- Humans are the only important reservoir of *H. pylori*. Children may acquire the organism from their parents (most often the primary caregiver) or from other children.
- Most *H. pylori*-colonized persons do not develop clinical sequelae. That some persons develop overt disease whereas others do not is related to a combination of factors: bacterial strain differences (cag-positive, type IV secretion system, the vacuolating cytotoxin VacA), host susceptibility to disease, and environmental factors (the interleukin 1 gene polymorphisms, and smoking).

• 2/3 of people have *H. pylori* (colonization) as a part of stomach colonizer (stomach microbiome).

• developing countries > developed countries

• transmission: Personal + oral-oral, always there is cluster of cases
إذا تشبهوا واحد بالآخر عادة يلاقى عن باقي الأشخاص الـ *H. pylori*

الكلية
عن جهة
ليصبح عندهم
حالة

Pathogenesis

Unlike *Campylobacter*, which causes disease primarily through tissue invasion, *Helicobacter pylori* does not have a single, specific mechanism of causing gastritis. Instead, its pathogenicity involves multiple contributing factors. Structurally, *H. pylori* has multiple flagella located at one pole, enabling a corkscrew-like movement that helps it swim from the acidic lumen of the stomach toward the stomach wall. This area has a relatively higher pH (lower acidity), offering a more protective environment for the bacteria. Additionally, *H. pylori* produces mucinases that help it penetrate and settle into the mucus layer of the stomach lining, as well as cytotoxins that contribute to tissue damage. Another key virulence factor is urease, which breaks down urea (for example, from the diet) into ammonia. This ammonia neutralizes stomach acid, reducing acidity—an environment unfavorable for the bacteria—and plays a significant role in the pathogenesis of *H. pylori*. This activity contributes to the establishment of gastritis, which may initially present as acute gastroenteritis and can progress to chronic inflammation, increasing the risk of complications such as gastric cancer. Although *H. pylori* cannot always be cultured successfully, gastritis caused by this organism is typically characterized by malnourishment of the mucosa and infiltration by mononuclear cells.

clusters → إما ذاتها أو واحد بالعدة الباقي يتهاب.

- *H. pylori* is found deep in the mucous layer near the epithelial surface where physiologic pH is present.
- *H. pylori* is quite motile, even in mucus, and is able to find its way to the epithelial surface. *H. pylori* overlies gastric-type but not intestinal-type epithelial cells.
- *H. pylori* also produces a protease that modifies the gastric mucus and further reduces the ability of acid to diffuse through the mucus.
- *H. pylori* produces potent urease activity, which yields production of ammonia and further buffering of acid.

- The mechanisms by which *H. pylori* causes mucosal inflammation and damage are not well defined but probably involve both bacterial and host factors. The bacteria invade the epithelial cell surface to a limited degree. Toxins and lipopolysaccharide may damage the mucosal cells, and the ammonia produced by the urease activity may also directly damage the cells.
- Polymorphonuclear and mononuclear cell infiltrates are seen within the epithelium and lamina propria. Vacuoles within cells are often pronounced. Destruction of the epithelium is common, and glandular atrophy may occur. *H. pylori* thus is a major risk factor for gastric cancer.
- *H. pylori* colonization induces chronic superficial gastritis, a tissue response in the stomach that includes infiltration of the mucosa by both mononuclear and polymorphonuclear cells.

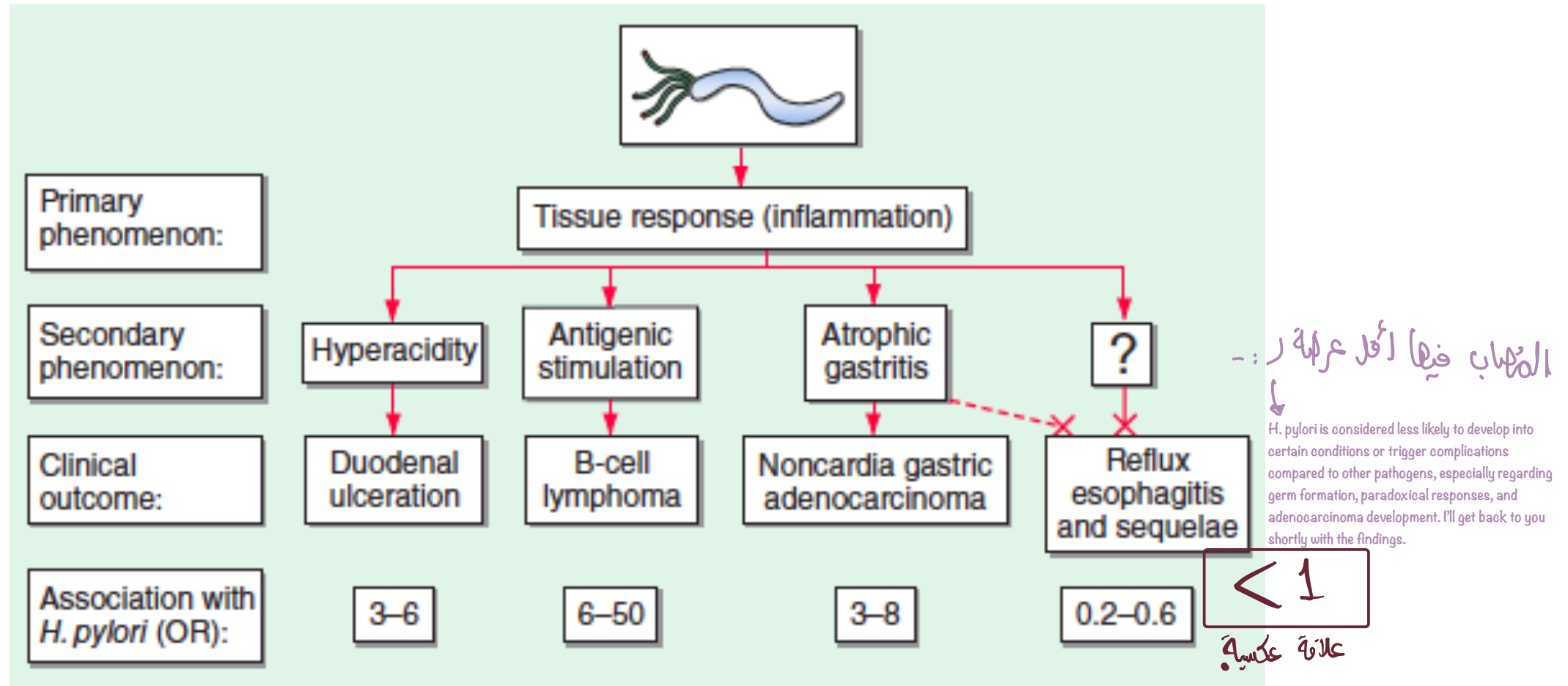
Clinical Findings

- Acute infection can yield an upper gastrointestinal illness with nausea and pain; vomiting and fever may also be present. The acute symptoms may last for less than 1 week or as long as 2 weeks. + Acid regurgitation ^{epigastric}
- After colonization, the H pylori infection persists for years and perhaps decades or even a lifetime. About 90% of patients with duodenal ulcers and 50–80% of those with gastric ulcers have H pylori infection. Recent studies confirm that H pylori also is a risk factor for gastric carcinoma and lymphoma.

Infection appear as:

- mainly patients develop Acute/chronic gastritis (inflammatory cells)
- Secondary may develop duodenal ulcer
- Persistent infection could lead to stomach cancer.

Relationships between colonization with *Helicobacter pylori* and diseases of the upper gastrointestinal tract.



Diagnostic Laboratory Tests

- من خلال النظمير يتأخذ خزعة ، موشرد لتشوفها
لكن هذا لا يجوي غياب المزالا لأنه يعتمد صحت
وين أخذت الخزعة
- usually biopsy from gastric antrum.
less painful cell (more H.pylori).

❖ Smears

- The diagnosis of gastritis and H pylori infection can be made histologically. A gastroscopy procedure with biopsy is required. Routine stains demonstrate gastritis, and Giemsa or special silver stains can show the curved or spiral-shaped organisms.

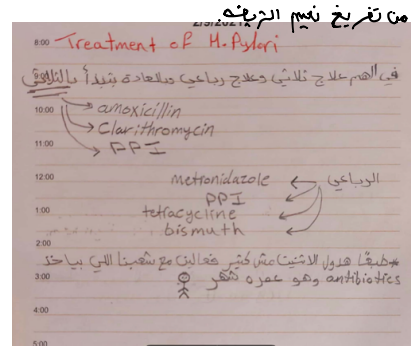
❖ Culture *For biopsy not stool.*

- Culture is performed when patients are not responding to treatment, and there is a need to assess susceptibility patterns.

❖ Special Tests

- *اداء في يبين فقاقيع في النسيج*
In vitro urease activity.
Rapid tests to detect urease activity in vitro are widely used for presumptive identification of H pylori in specimens.
- In vivo tests for urease activity can be done also. In urea breath tests, ^{13}C - or ^{14}C -labeled urea is ingested by the patient. If H pylori is present, the urease activity generates labeled CO_2 that can be detected in the patient's exhaled breath.
- *fecal stool antigen test:- to follow up treatment/eradication*
Detection of H pylori antigen in stool specimens is appropriate as a test of cure for patients with known H pylori infection who have been treated.

Treatment



• بيطيم العلاج الثلاثي إذا تكررت عوارضه
ببطيم العلاج الرباعي.

- Triple therapy with metronidazole and either bismuth subsalicylate or bismuth subcitrate plus either amoxicillin or tetracycline for 14 days eradicates H pylori infection in 70–95% of patients.
- An acid-suppressing agent given for 4 or 6 weeks enhances ulcer healing. Proton pump inhibitors (PPIs) directly inhibit H pylori and appear to be potent urease inhibitors.
- The preferred initial therapy is 7–10 days of a PPI plus amoxicillin and clarithromycin or a quadruple regimen of a PPI metronidazole, tetracycline, and (bismuth) for 10 days.

erythromycin بدل

- المبروفون كل شيء لهم حكاية الدكتور مكتوب، بين الامتياز
شكروا من الوديعايد (اذا ما معكم وقتة شكروا البعوي بخيركم، اذا لم يفرقه، بالتوفيق

PLESIOMONAS

- Un-commonly, Plesiomonas have been associated with diarrheal disease in humans.
- Plesiomonas shigelloides is an oxidase positive, gram-negative rod with polar flagella.
- Plesiomonas is most common in tropical and subtropical areas. It is a water and soil organism and has been isolated from freshwater fish and many animals.
- Most isolates from humans have been from stool cultures of patients with diarrhea.
- Plesiomonas grows on the differential media used to isolate Salmonella and Shigella from stool specimens .
- Some Plesiomonas strains share antigens with Shigella sonnei, and cross-reactions with Shigella antisera occur. Plesiomonas can be distinguished from shigellae in diarrheal stools by the oxidase test: Plesiomonas is oxidase positive, and shigellae are not.
- Plesiomonas species are positive for DNase; this and other biochemical tests distinguish it from Aeromonas species.

Aeromonas

- Aeromonas species are distinguished from the enteric gram-negative rods by finding a positive oxidase reaction in growth obtained from a blood agar plate. Aeromonas species are differentiated from vibrios by showing resistance to the compound O/129 and lack of growth on media containing 6% NaCl.
- Typically, aeromonads produce hemolysins. Some strains produce an enterotoxin, Cytotoxins and the ability to invade cells in tissue culture have been noted.
- However, gastroenteritis, caused mostly by A caviae complex, ranges from acute watery diarrhea to less commonly a dysenteric type of illness.
- Aeromonas species are also associated with extraintestinal infections such as bacteremia and wound infections. The latter are often the result of trauma that occurs in a water environment and are caused primarily by A hydrophila

Treatment

- Aeromonas and Plesiomonas species are generally susceptible to fluoroquinolones (e.g., ciprofloxacin), third- and fourth-generation cephalosporins carbapenems, and aminoglycosides, but resistance has been described to all those agents. Because Aeromonas can produce various β -lactamases, including carbapenemases,
- Susceptibility testing must be used to guide therapy.

The End