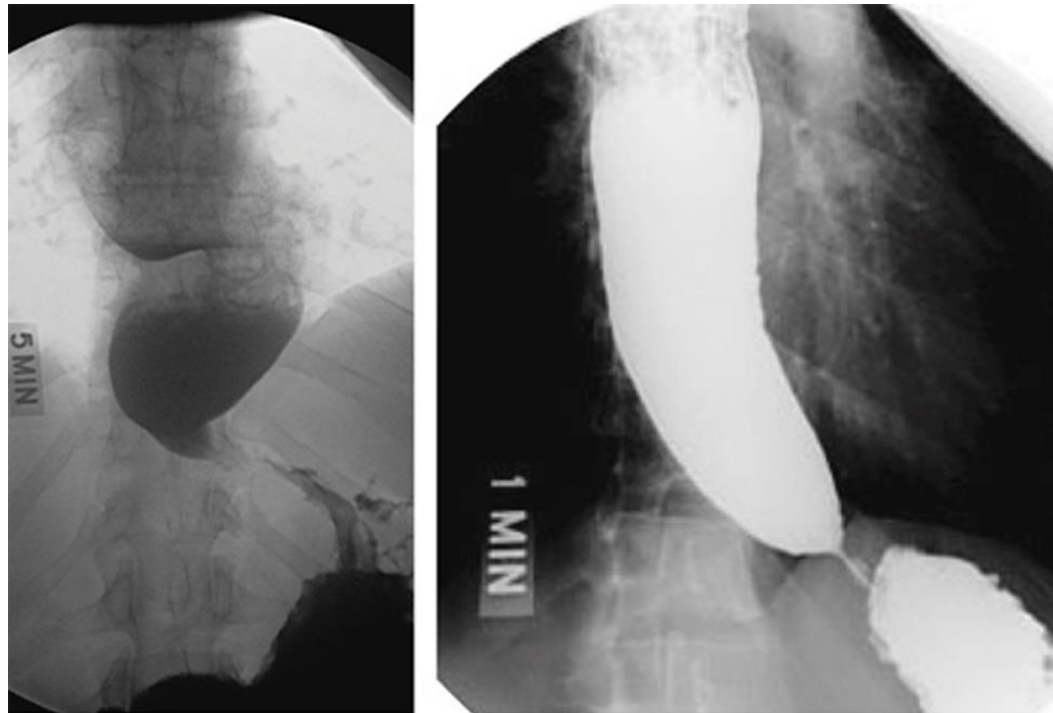


Pathology lab slides

Manar Hajeer, MD, FRCPath

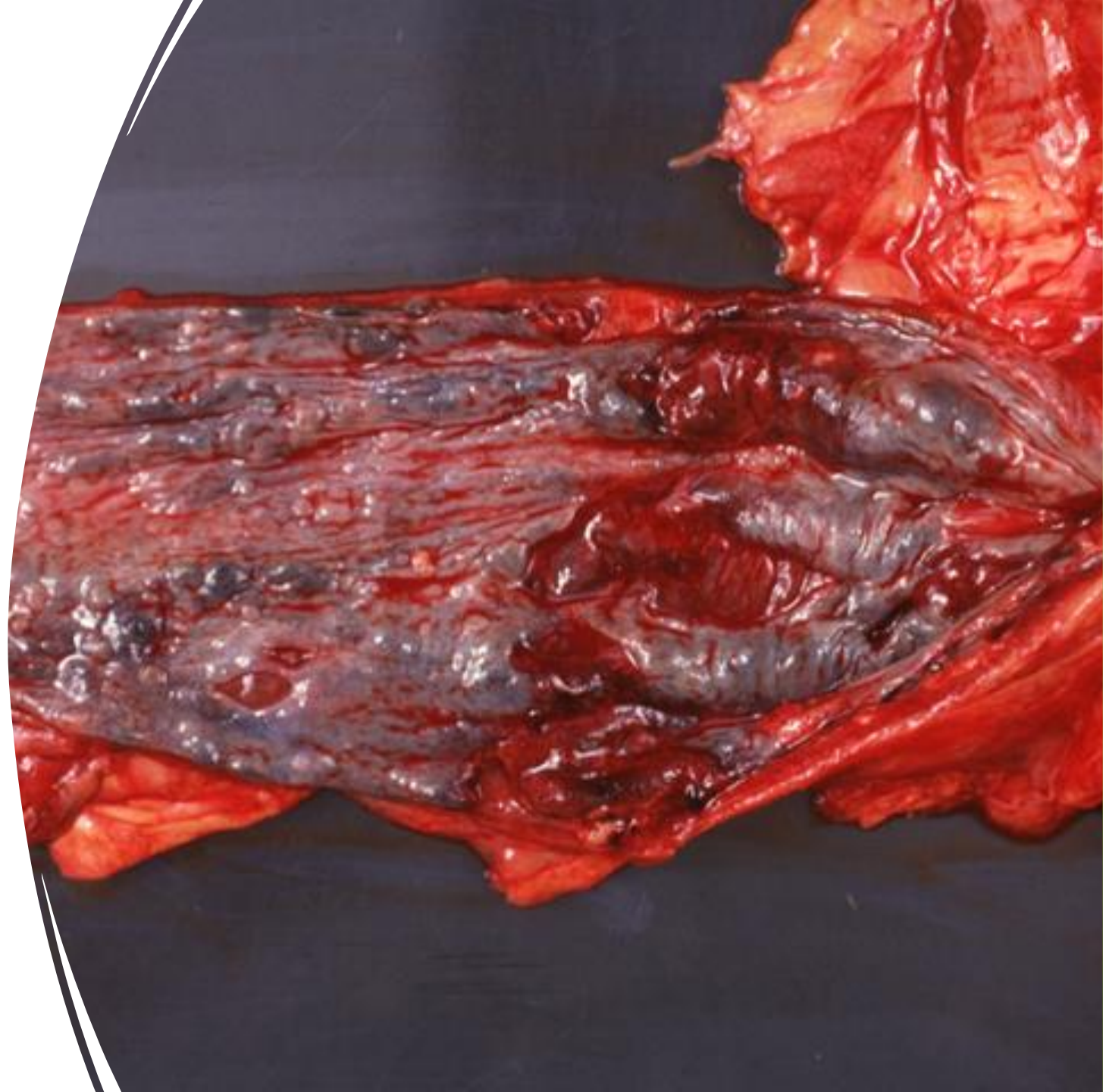
The university of Jordan, School of medicine

Achalasia



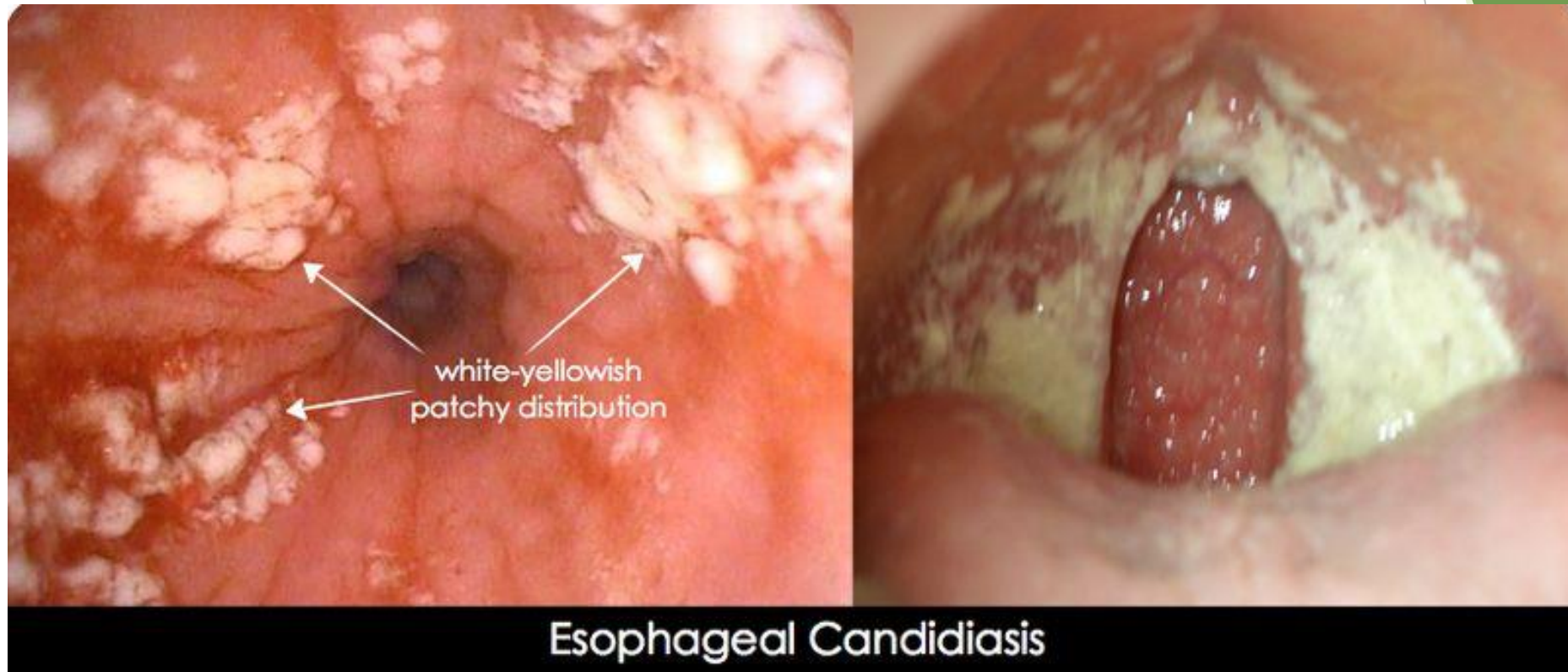
Source: Longo DL, Fauci AS, Kasper DL, Hauser SL, Jameson JL, Loscalzo J: *Harrison's Principles of Internal Medicine, 18th Edition*: www.accessmedicine.com
Copyright © The McGraw-Hill Companies, Inc. All rights reserved.

Esophageal varices

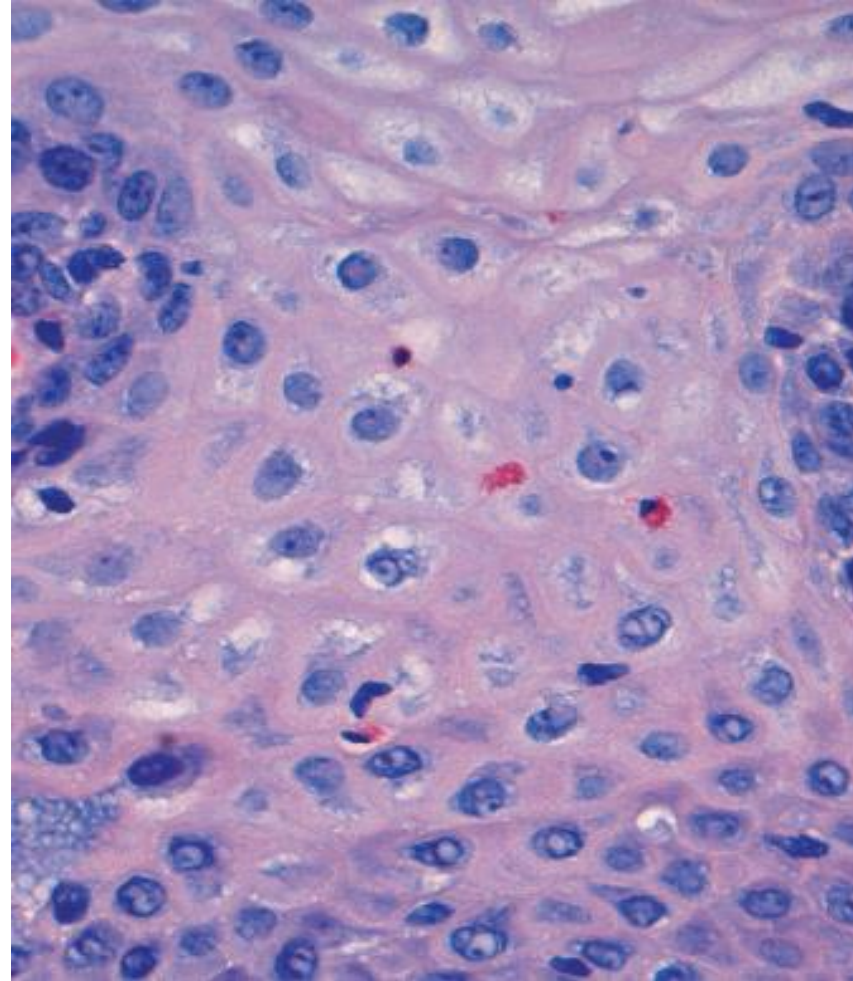
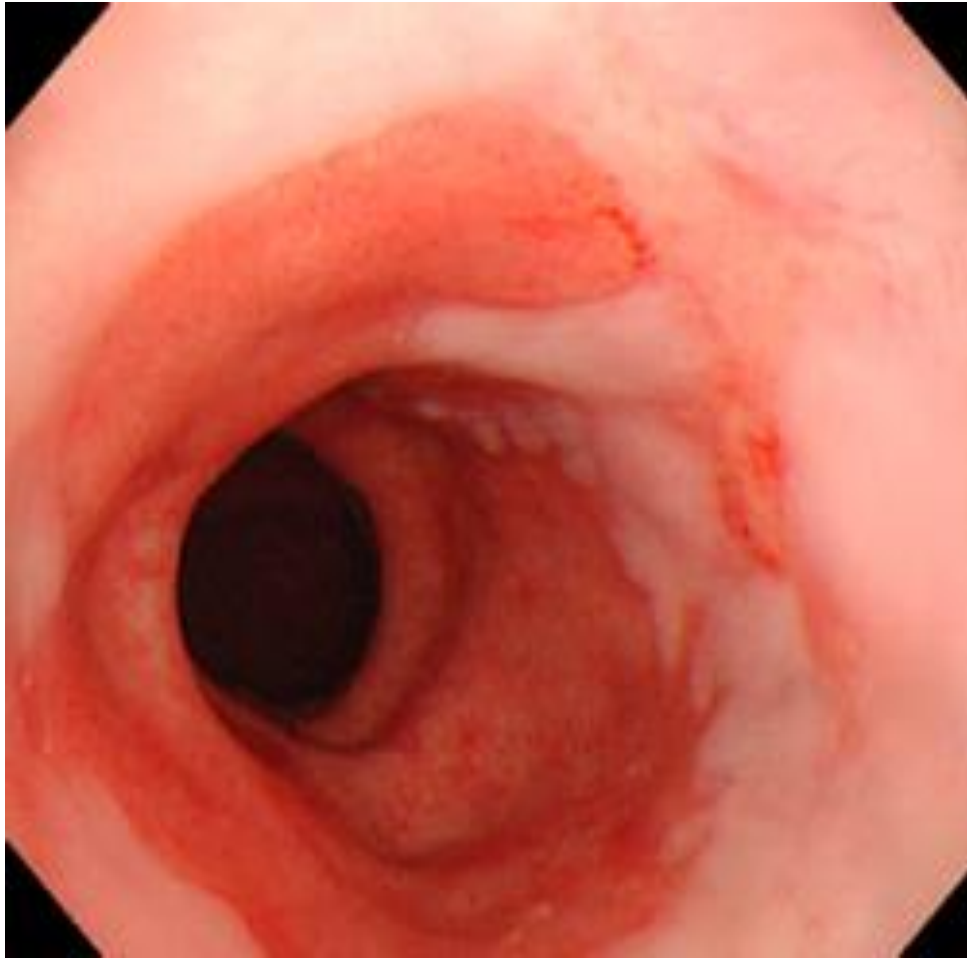


- [Medpics - UCSD School of Medicine](#)

Esophageal candidiasis

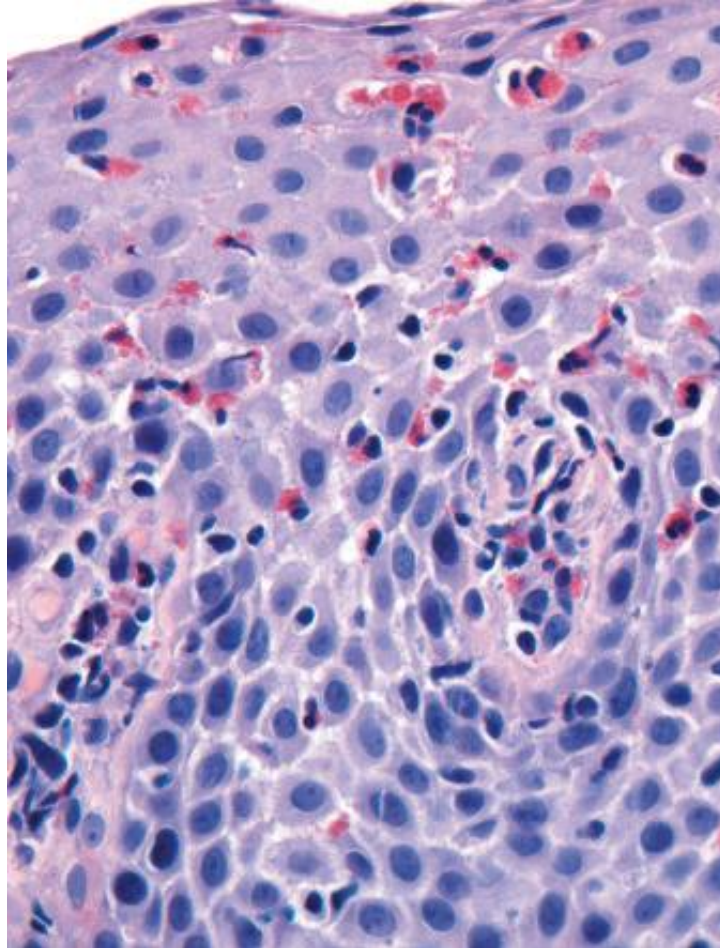


<https://www.pinterest.com/pin/374291419013418659/>

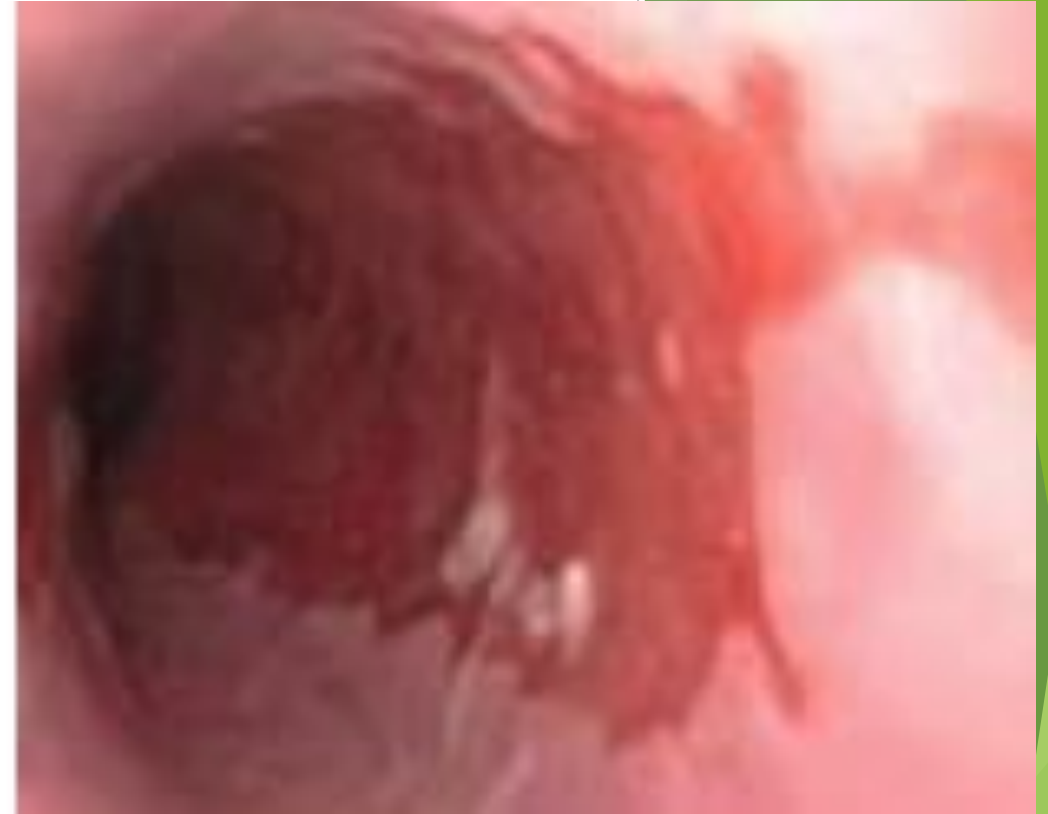
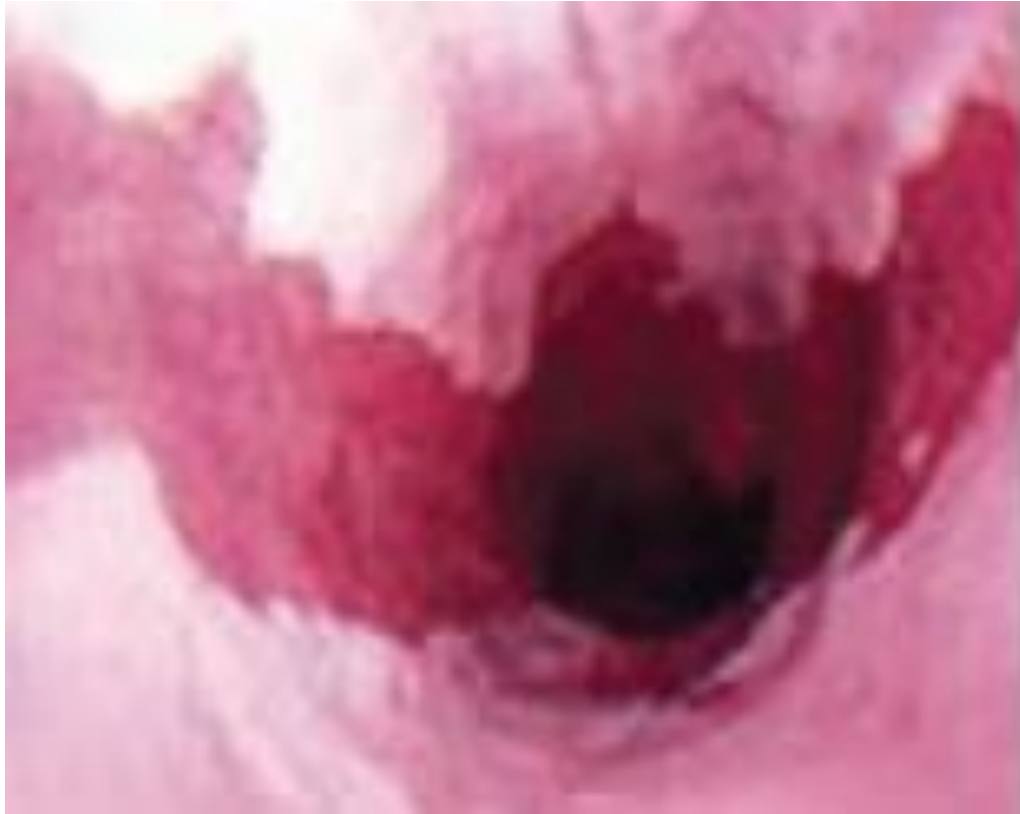


Reflux
esophagitis

Rings in eosinophilic esophagitis



- Robbins Basic Pathology 10th edition

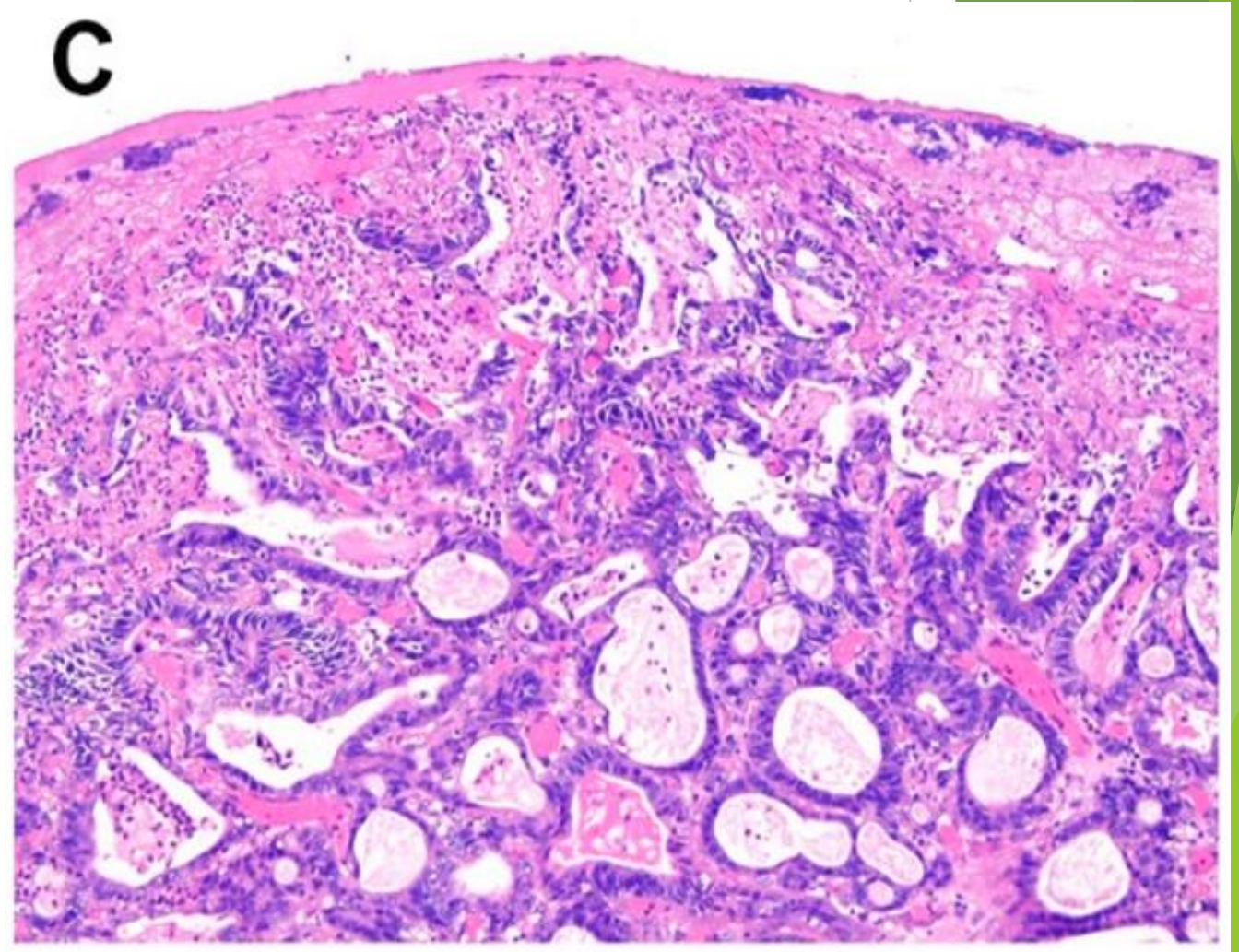


Tongues in Barrett
esophagus

Esophageal adenocarcinoma



Robbins Basic Pathology 10th edition

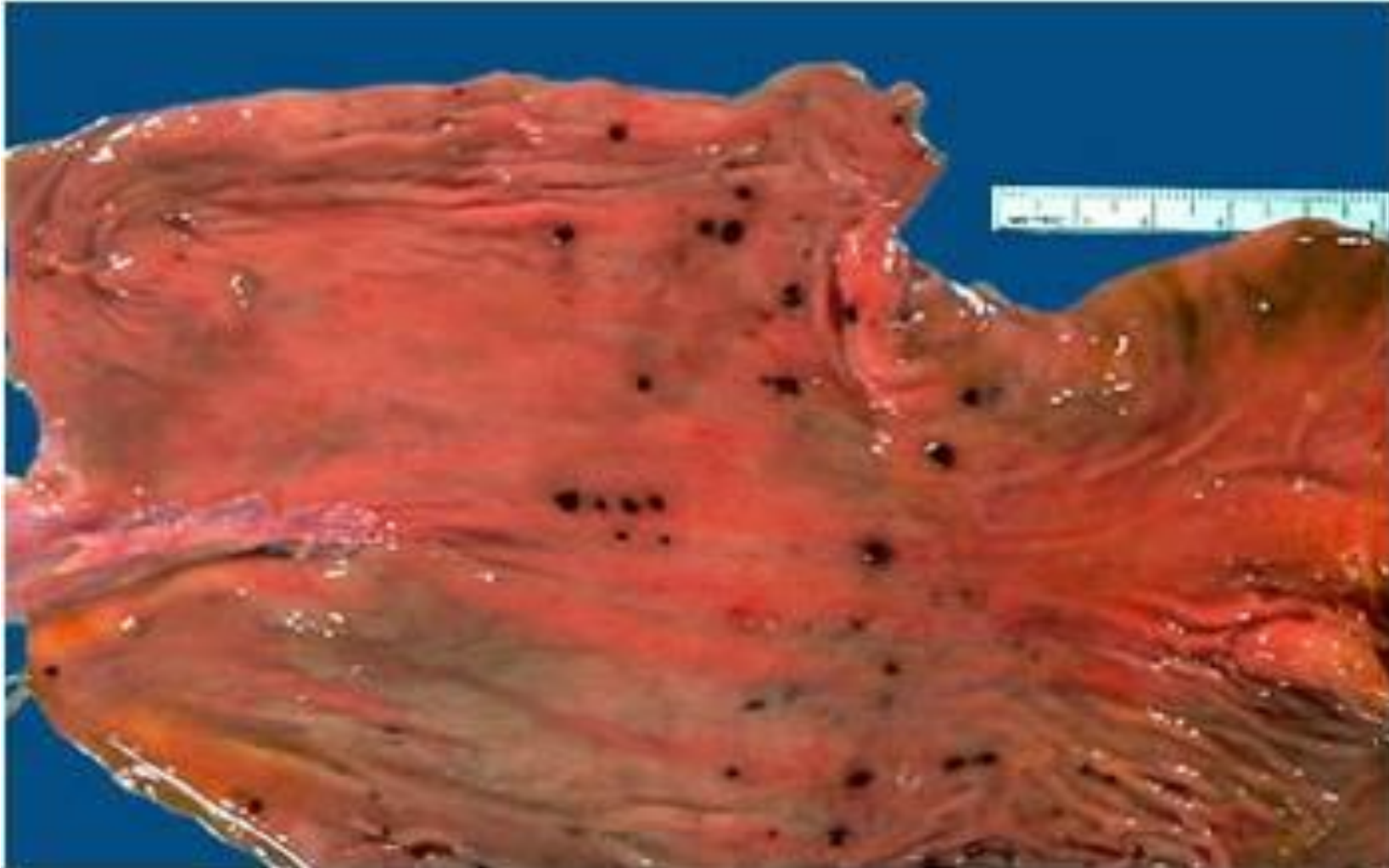


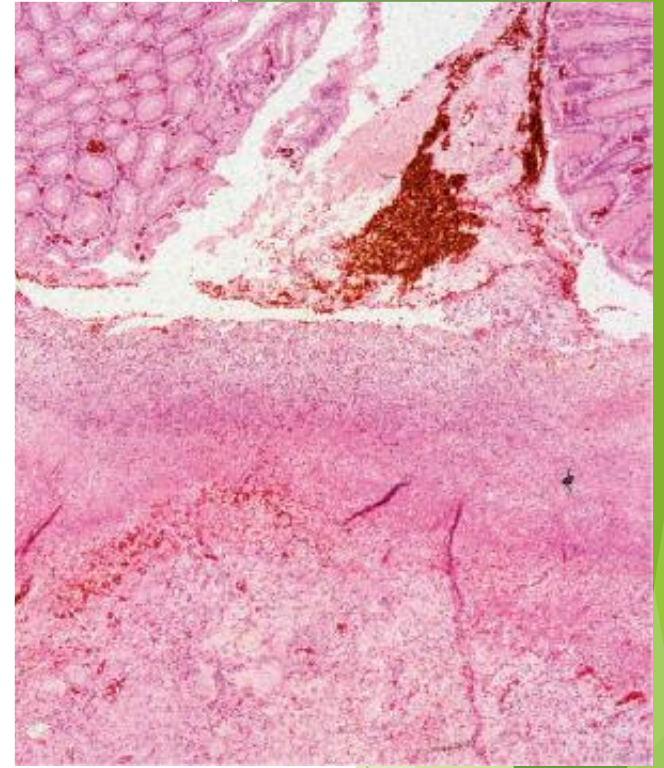
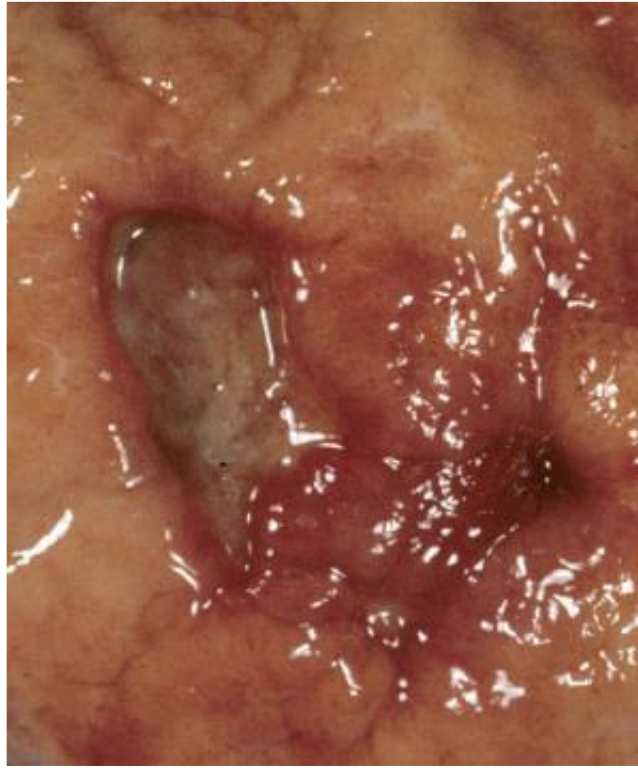
Mid esophagus



- ▶ Esophageal squamous cell carcinoma

Stress gastric ulcers





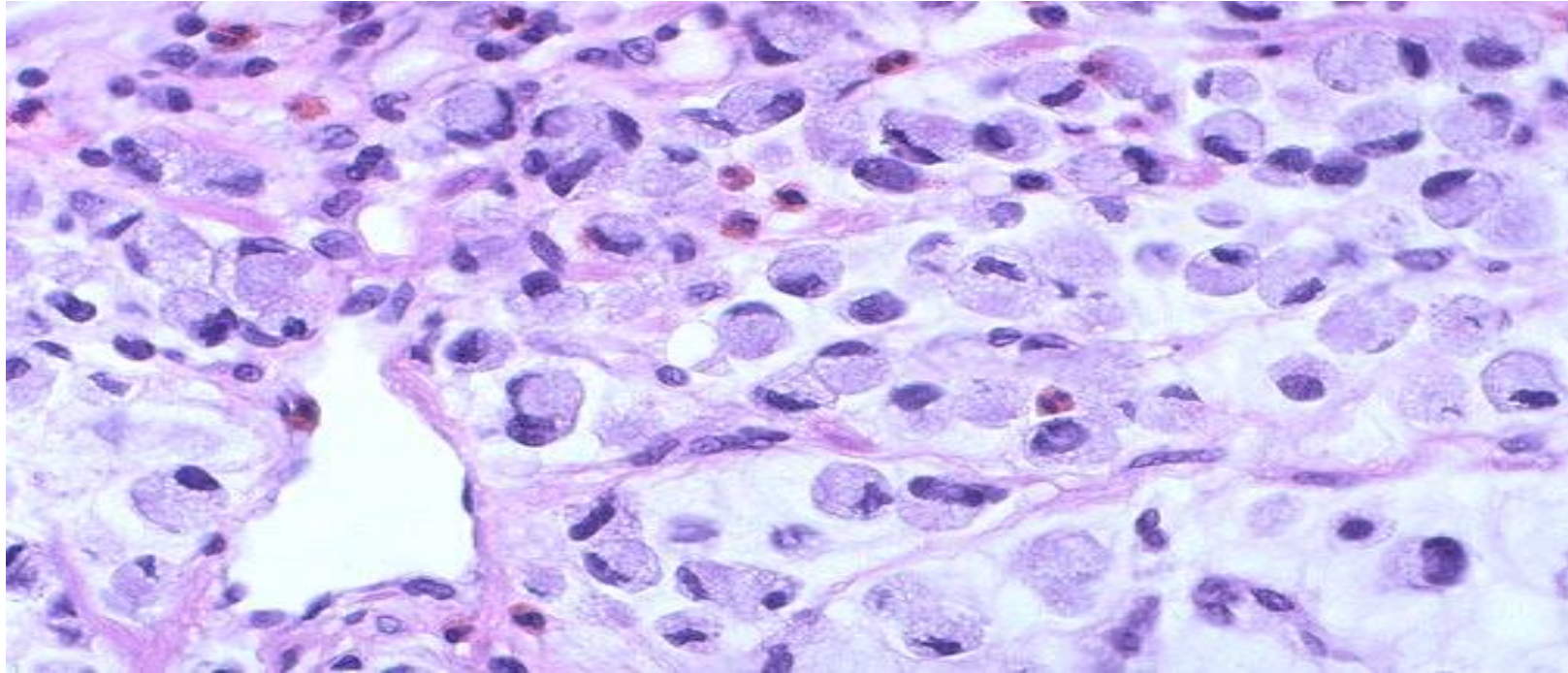
Chronic gastric ulcers

Duodenal ulcer



- ▶ Diffuse type gastric cancer (linitis plastica)





Diffuse type, signet ring cells

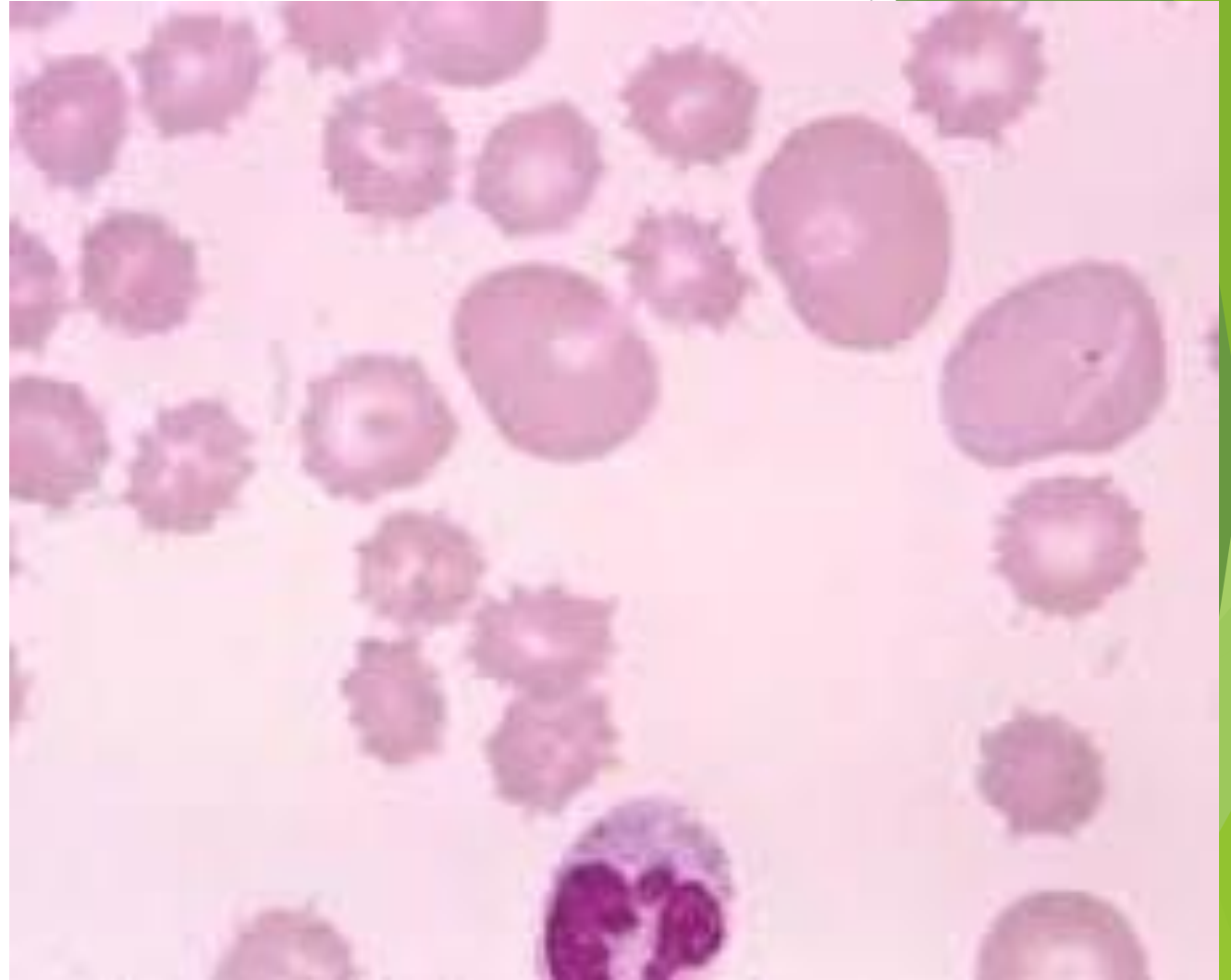
Meckel's diverticulum



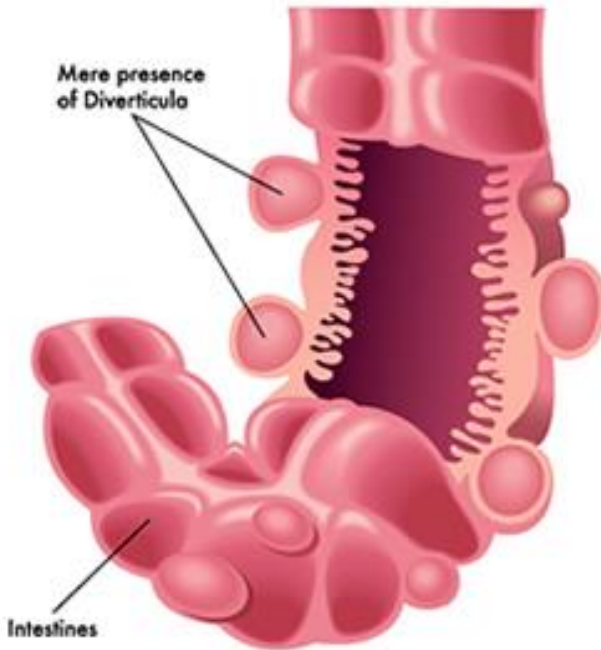
Dermatitis herpetiformis with celiac disease.



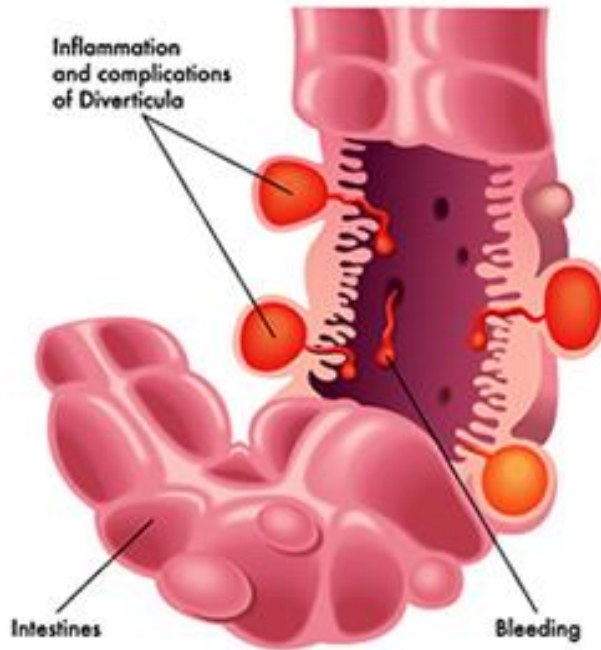
- ▶ Spur cells in abetalipoproteinemia

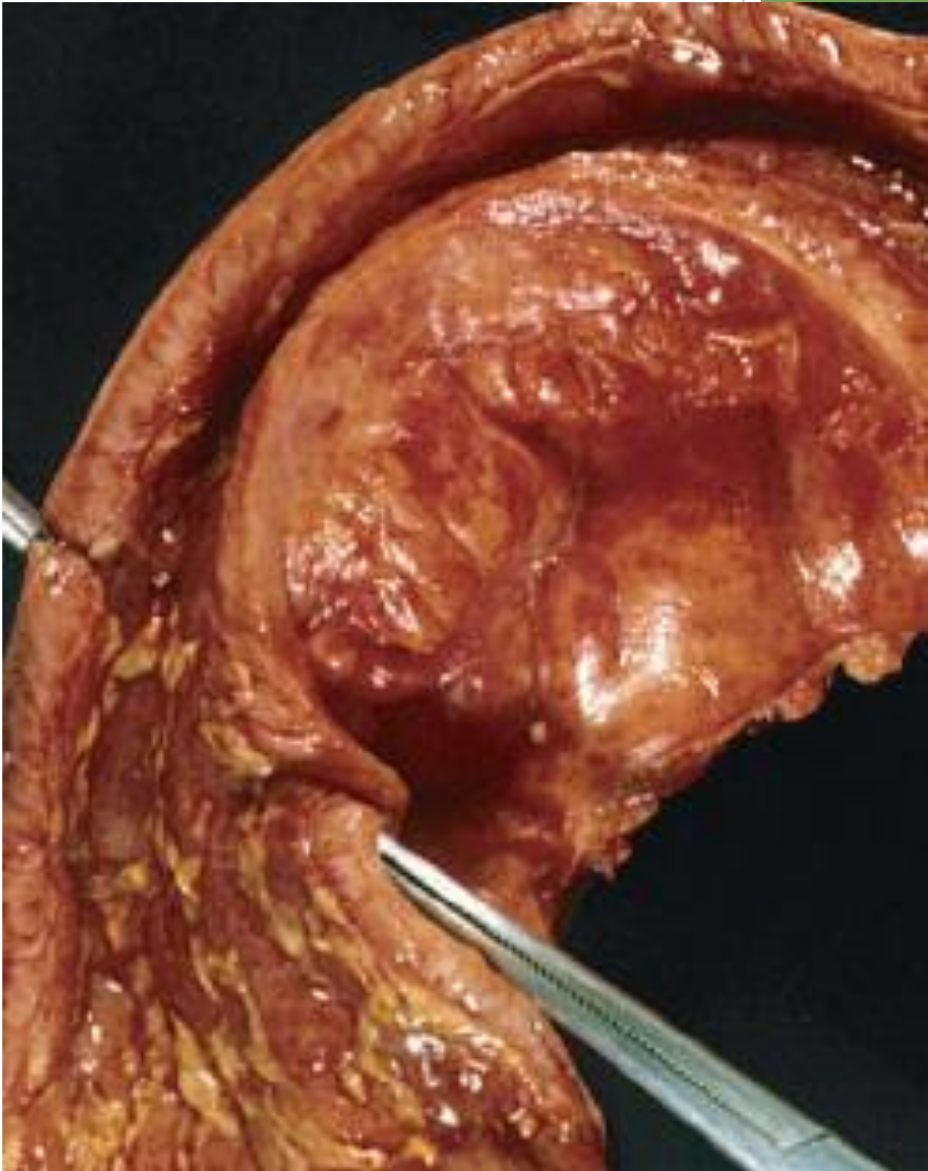


Diverticulosis



Diverticulitis



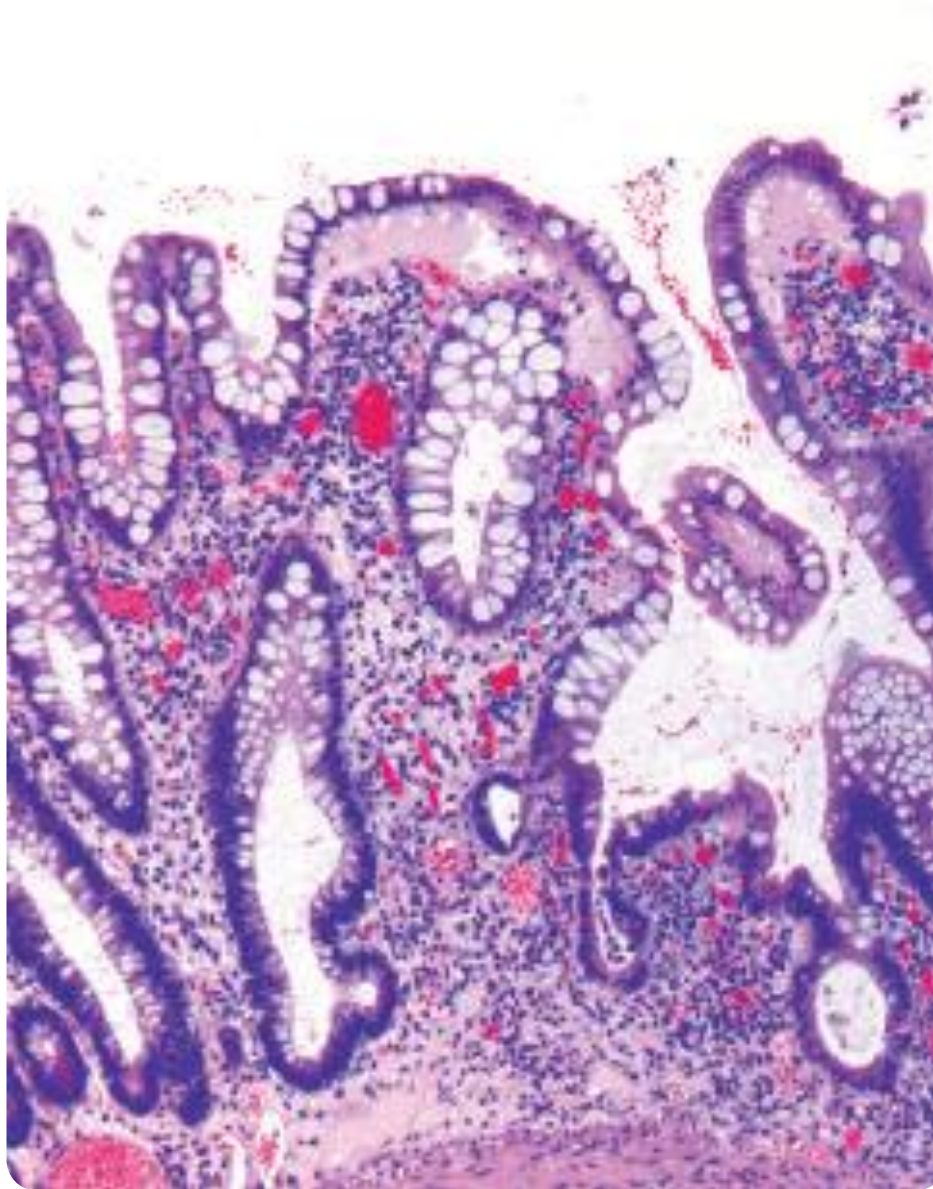




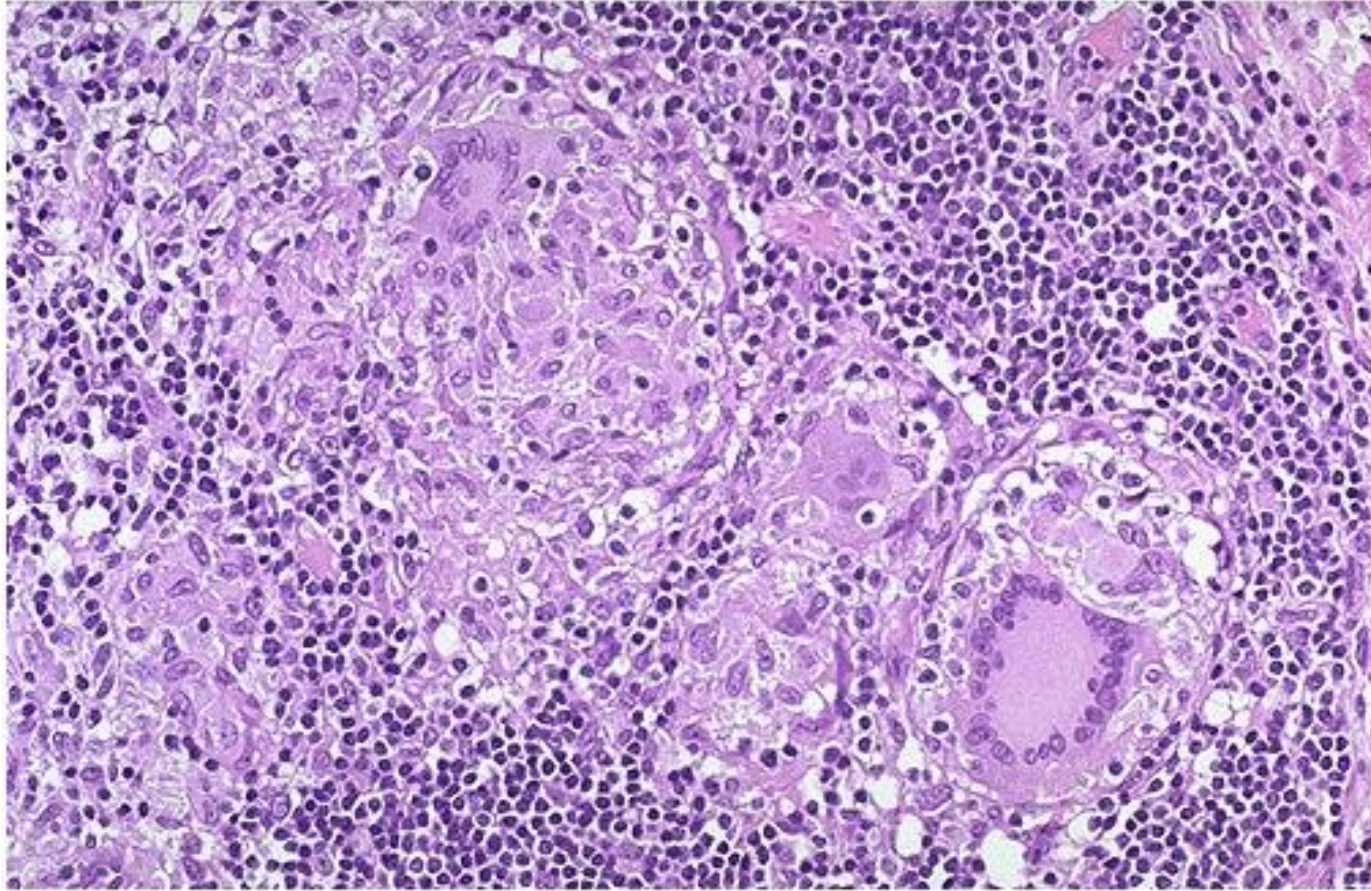
Cobblestone appearance

Cobblestone appearance , Crohn disease





Haphazardly arranged
crypts, CIBD



non-casating granuloma, Crohn
disease.

Erythema nodosum, Crohn disease

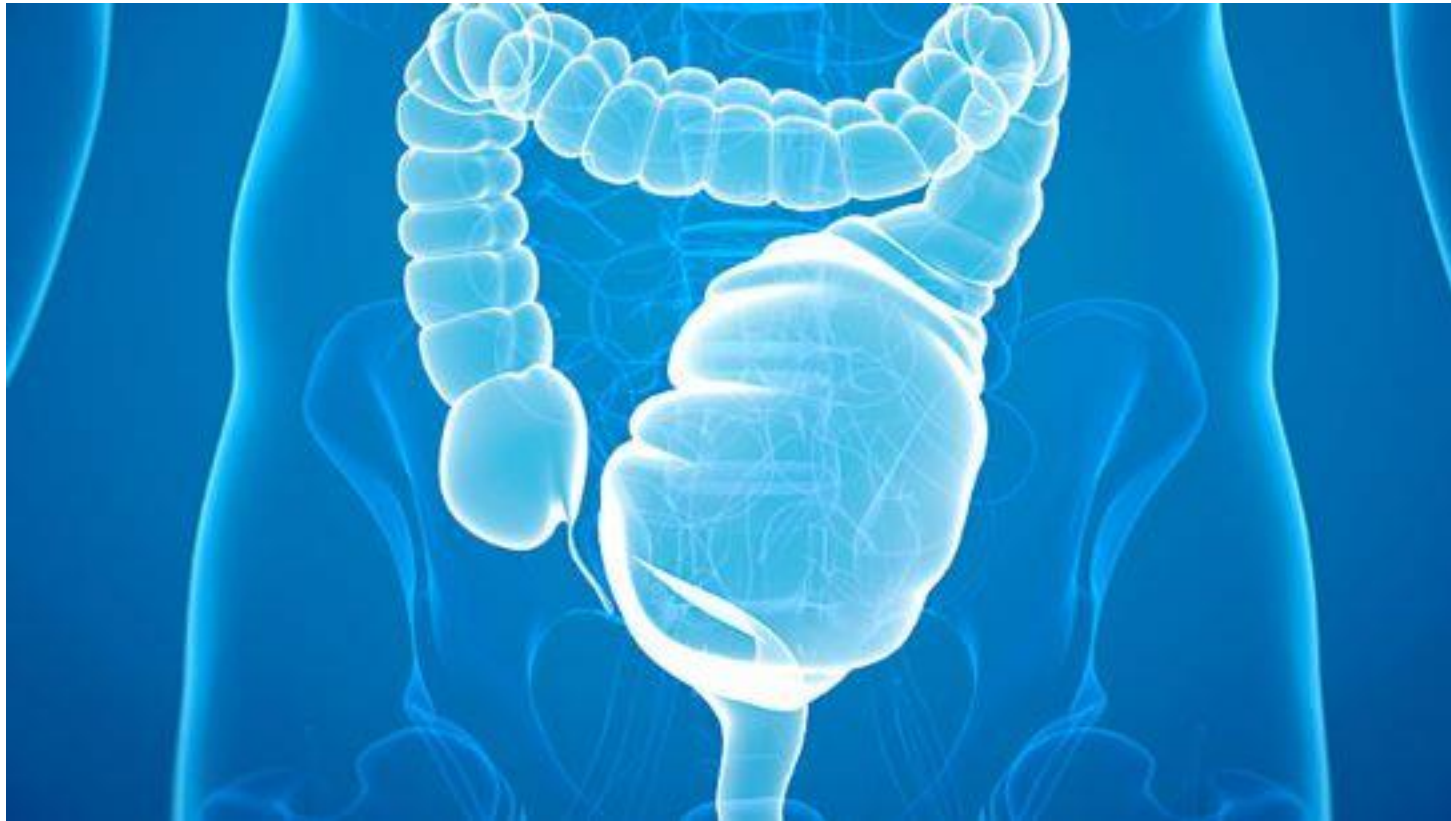


Clubbing



[Wikipedia](#)

Toxic megacolon



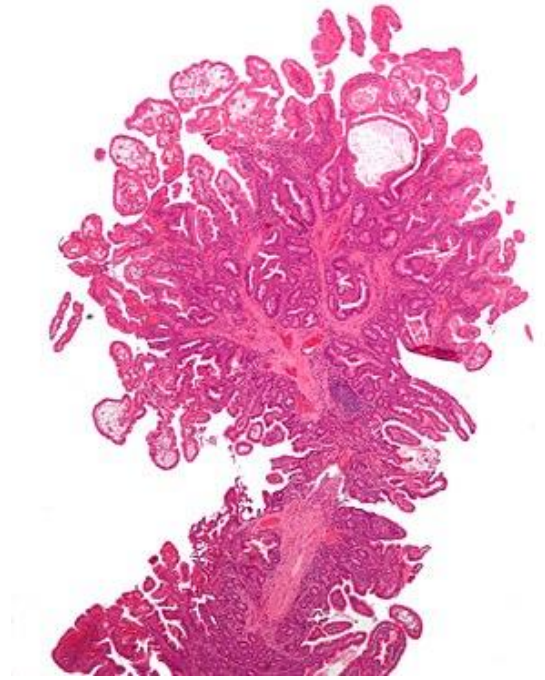
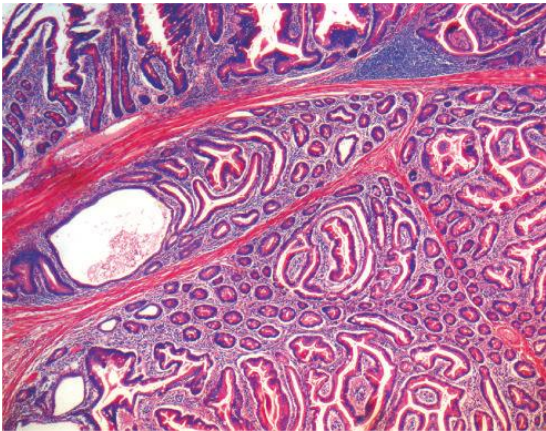
Pancolitis.



Abrupt transition b/w normal and disease segment, ulcerative colitis.



Peutz-Jeghers polyp



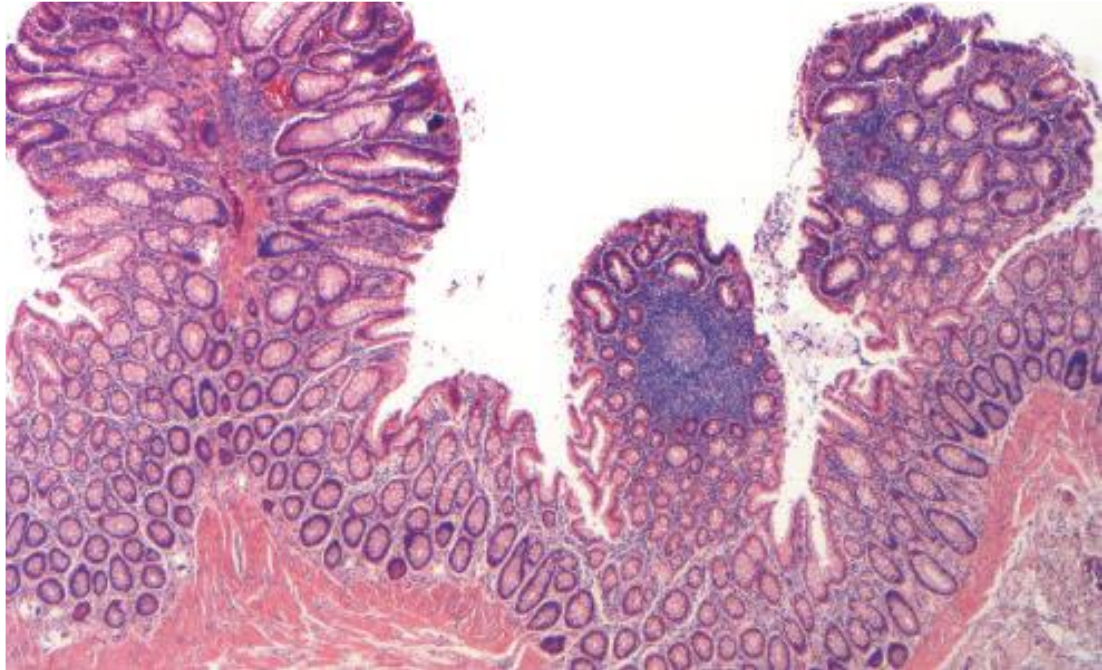
- ▶ Christmas tree pattern.

Mucocutaneous pigmentation, Peutz Jegher syndrome



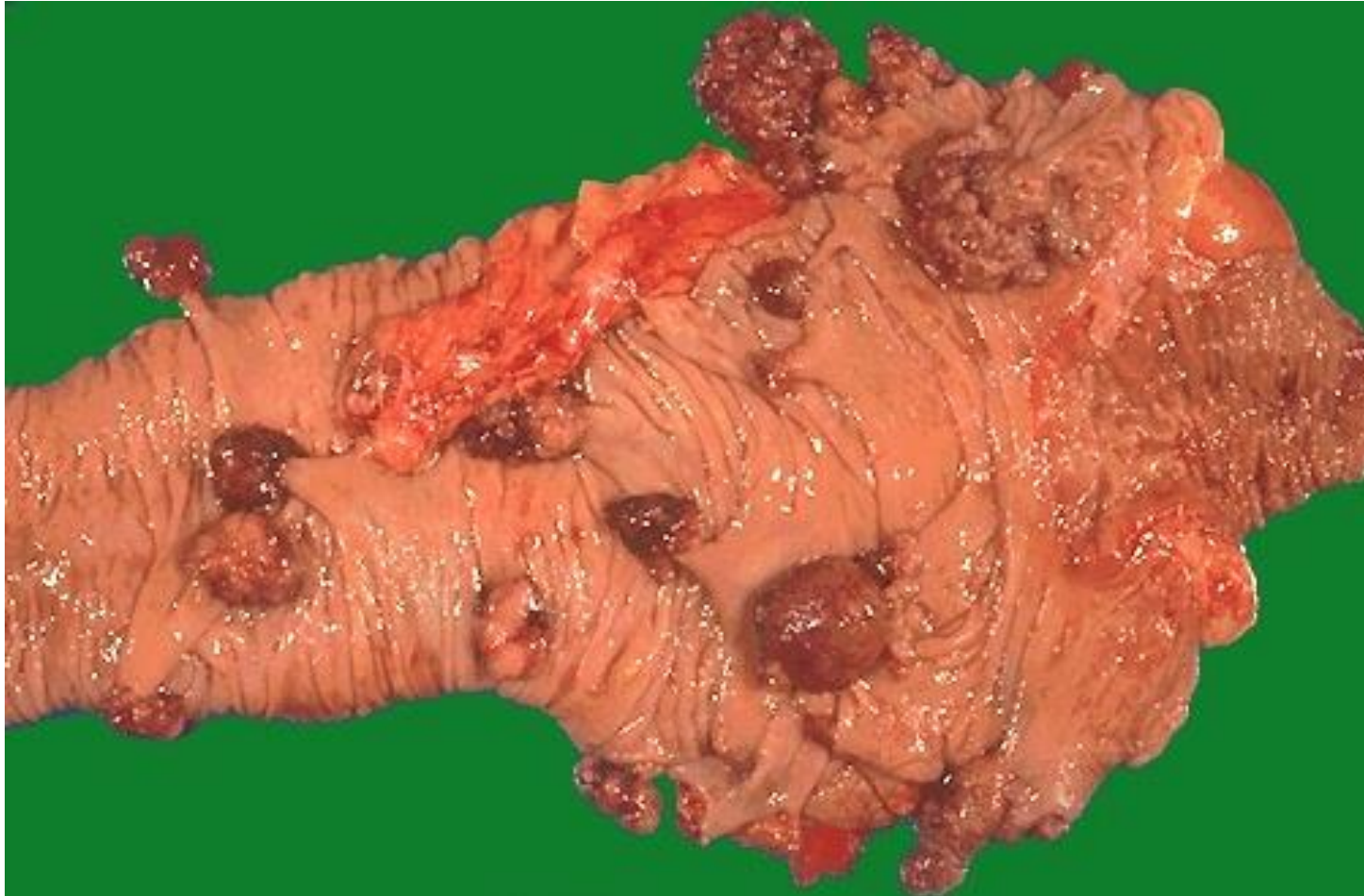
- ▶ Familial adenomatous polyposis





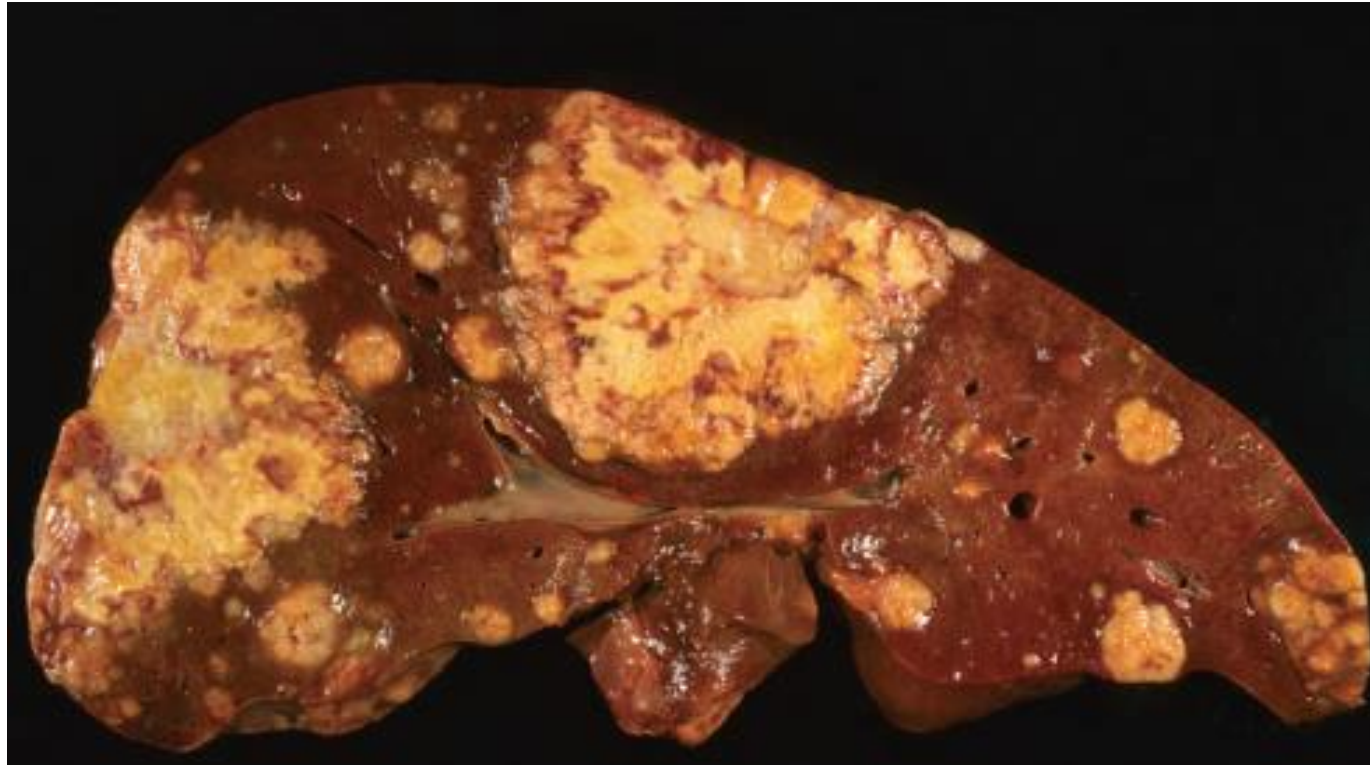
▶ FAP

Cecal polyps in HNPCC.



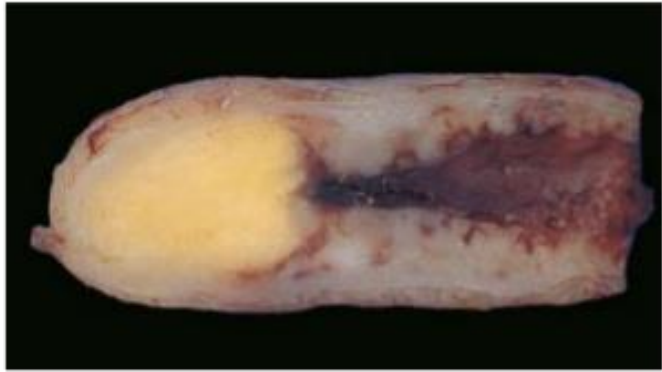
Exophytic adenocarcinoma, colon



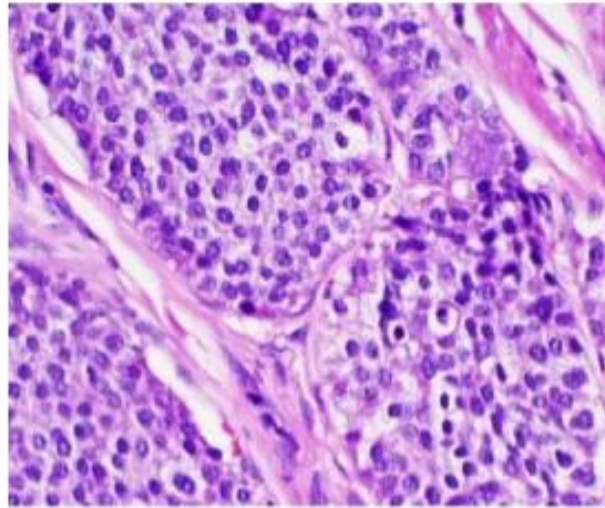


Liver metastasis from colon cancer.

Carcinoid tumor



Gross



Microscopic

► Appendix