

بِسْمِ اللَّهِ الرَّحْمَنِ الرَّحِيمِ



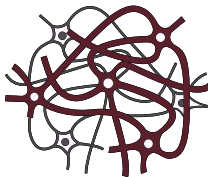
# Past Papers

FINAL | Lectures (1-9)

﴿ إِنِّي تَوَكَّلْتُ عَلَى اللَّهِ رَبِّي وَرَبِّكُمْ مَا مِنْ دَابَّةٍ إِلَّا هُوَ آخِذٌ بِنَاصِيَتِهَا إِنَّ رَبِّي عَلَى صِرَاطٍ مُسْتَقِيمٍ ﴾

**Written by:** Layan Fawarseh  
Dana Hijeh  
Lubna Qasem  
Hind Suhwail

**Reviewed by:** Tala Assaf  
Nour Elzogheir



# Lectures 1 & 2



**Q1. Calcarine sulcus is separating between which of the following gyri?**

- A) Orbital and tentorial
- B) Lingual and cuneus
- C) Precuneus and paracentral
- D) Cingulate and corpus callosum
- E) Cuneus and precuneus

**Q2. Parietooccipital fissure is present between one of these two lobes of the cerebrum:**

- A) Parietal and frontal
- B) Occipital and temporal
- C) Occipital and frontal
- D) Occipital and parietal
- E) Parietal and frontal

.

### **Q3.Cingulate gyrus lie between:**

- A) Parietal & occipital lobe
- B) Corpus callosum & cingulate sulcus
- C) Caudate & lentiform nucleus
- D) Thalamus & tegmentum of midbrain
- E) Corpus callosum & parietal lobe

**Q4. Which of the following terms is used to describe fibers that connect the two cerebral hemispheres?**

- A) Projection fibers
- B) External capsule
- C) Commissural fibers
- D) Association fibers
- E) Internal capsule

**Q5. Find the mismatch:**

A) precentral gyrus » contralateral hemiplegia

B) postcentral gyrus » loss in sensation

C) temporal lobe » hearing defect mainly contralateral

D) occipital lobe » contralateral hemianopia

E) middle frontal gyrus » conjugate movements of both eyes to the opposite side.

**Q6. Which of the following is not a motor area?**

A) 4

B) 6

C) 8

D) 44

E) 39

**Q7. Which of the following occurs due to destructive lesion restricted to the Wernicke area?**

- A) Expressive aphasia
- B) Paralysis of the tongue
- C) Global aphasia
- D) Receptive aphasia
- E) Deafness

**Q8. The cerebral area which is responsible for production of fine movements of hand is located:**

- A) In the superior temporal gyrus
- B) Behind the central sulcus
- C) On the medial surface of the brain
- D) In the occipital lobe
- E) In front of the central sulcus

**Q9. Frontal eye field area is present in which of the following gyri?**

A) Middle frontal

B) Superior frontal

C) Inferior parietal

D) Superior parietal

E) Inferior frontal

**Q10. Regarding Premotor area, All of the following are true EXCEPT:**

- A) Lesions of this area alone produce more severe paralysis than destruction of primary motor area
- B) It receives numerous inputs from the sensory cortex, the thalamus, and the basal ganglia
- C) It uses cues for the selection of appropriate action
- D) It is involved in controlling coarse postural movements
- E) located anterior to the primary motor area

**Q11. Wernicke's area is present in the :**

- A) parietal lobe
- B) occipital lobe
- C) frontal lobe
- D) Insular lobe

**Q12. The higher cerebral center responsible for taste sensation is located in**

- A) Geniculate ganglion
- B) Temporal lobe
- C) Insula
- D) Geniculate bodies
- E) Frontal lobe

**Q13. Primary visual area is present around the**

- A) Occipitotemporal fissure
- B) Calcarine fissure
- C) Lingual fissure
- D) Parietooccipital fissure
- E) Collateral fissure

**Q14. The cerebral area which is responsible for receiving sensations from the right hand is located in:**

- A) Left postcentral gyrus
- B) Left precentral gyrus
- C) Right precentral gyrus
- D) Right postcentral gyrus
- E) Supplementary sensory area

**Q15. Which of the following structure is most posterior on the lateral surface of the brain?**

A) Area 8

B) Area 3.1.2

C) Area 44,45

D) Area 4

E) Area 6

**Q16. Choose the incorrect statement, regarding area 6:**

- A) Lies in the frontal lobe.
- B) Lies in front of primary motor area 4
- C) Supplied mainly by anterior cerebral artery
- D) Control trunk muscles
- E) Is considered motor area

**Q17. Visual center is in:**

- A) Lie between Corpus callosum & cingulate sulcus
- B) Calcarine sulcus
- C) Lie on frontal lobe
- D) Lie on temporal lobe

**Q18. What will happen if there is a defect in the right hand?**

- A) contralateral hemiplegia of the left hemisphere
- B) Semilateral hemiplegia of the right hemisphere
- C) Motor aphasia
- D) Sensory loss in opposite side
- E) Apraxia

Ans : A

The question is poorly worded but  
I kept the original answer

**Q19. Which one of the following is mismatched pair?**

A) Visual association area » complete loss of vision

B) Frontal eye field » conjugate movement of both eyes to the same side

C) Primary hearing center » slight diminution in auditory acuity mainly on contralateral

**Q20. Sensory area :**

A) 6

B) 4

C) 8

D) 39

E) 45

**Q22. The best answer regarding aphasia is ?**

- A) Damage to Werneck's » expressive / damage to Broca's » receptive.
- B) Damage to Werneck's » global aphasia.
- C) Damage to Werneck's » receptive / damage to Broca's » expressive.
- D) Damage to the frontal lobe » Wernicke's is the affected one.
- E) Damage to Broca's area » nonsense spoken words.

**Q23. Regarding the frontal eye field, the correct statement is ?**

- A) Located in the superior frontal gyrus.
- B) Function independently of visual stimuli.
- C) Located posterior to the primary motor area in the frontal lobe.
- D) In case of lesion the patient looks toward the irritation but away from the destruction.
- E) None of the above is correct

**Q24. Which of the following statements about the corpus callosum is true?**

- A) It is located above the cingulate gyrus and below the fornix
- B) It is located below the cingulate gyrus and above the fornix
- C) It is located between the thalamus and hypothalamus
- D) It is located lateral to the insula

**Q25. The location of the primary auditory area is best described ?**

- A) Anterior part of middle frontal gyrus.
- B) Inferior wall of lateral sulcus.
- C) Anterior to central fissure.
- D) Posterior to central fissure.
- E) Posterior to postcentral gyrus.

**Q26. One of the following fibers is projecting to the areas 41,42**

- A) Gustatory radiation
- B) Sensory radiation
- C) Auditory radiation
- D) Visual radiation
- E) Olfactory radiation

**Q27. Choose the correct statement.**

- A) Secondary visual area is located on the parietal lobe
- B) Primary visual area recognizes what you can see
- C) Lesion of left frontal eye field moves the eyes to the left
- D) Expressive aphasia is caused by a destructive lesion restricted to the Wernicke speech area

# **Basal Nuclei**

**Q1) The posterior limb of the internal capsule is located between one of the following:**

- A) Caudate and lentiform nuclei.
- B) Caudate nucleus and thalamus.
- C) Lentiform nucleus and thalamus.
- D) The two thalami.
- E) Lentiform nucleus and insula.

**Q2) One of the following is incorrect about the caudate nucleus:**

- A) The tail is located in the temporal lobe.
- B) It is C shaped structure.
- C) It is not connected with the amygdaloid nucleus.
- D) It is one of the basal nuclei.
- E) The head is located in the frontal lobe.

**Q3) Dopamine secreted by:**

- A) Claustrum.
- B) Amygdaloid.
- C) Substantia nigra.
- D) Lentiform nucleus.
- E) Caudate nucleus.

**Q4) Not part of basal ganglia:**

- A) Putamen.
- B) Claustrum.
- C) Caudate nucleus.
- D) Amygdala.
- E) Dentate.

**Q5) Wrong about Lentiform nucleus:**

- A) Surrounded by external capsule laterally.
- B) Consists of 2 parts.
- C) Medial to thalamus.

**Q6) The anterior limb of the internal capsule runs between:**

- A) Caudate and thalamus.
- B) Caudate and lentiform.
- C) Lentiform and thalamus.
- D) Lentiform and insula.
- E) The two thalami.

**Q7) The thin sheet of gray matter separated from lentiform by the external capsule:**

- A) Insular cortex.
- B) Thalamus.
- C) Caudate.
- D) Hippocampus.
- E) Claustrum.

**Q8) One of the following is not considered part of the basal nuclei:**

- A) Amygdala.
- B) Globus pallidus.
- C) Putamen.
- D) Red nucleus.
- E) Substantia nigra.

**Q9) In the Horizontal section of the brain, which arrangement is correct from medial to lateral?**

- A) Third ventricle, thalamus, claustrum, internal capsule.
- B) Third ventricle, thalamus, insula, internal capsule.
- C) Third ventricle, internal capsule, claustrum, thalamus.
- D) Third ventricle, thalamus, internal capsule, insula.
- E) Third ventricle, internal capsule, thalamus, insula.

**Q10) In the Horizontal section of the brain, All of the following parts could be seen EXCEPT:**

- A) Caudate and Lentiform nuclei.
- B) The two thalami.
- C) Anterior limb of the internal capsule.
- D) Sublentiform part of the internal capsule.
- E) Posterior limb of the internal capsule.

**Q11) Corpus striatum is:**

- A) Lentiform nucleus and caudate nucleus.
- B) Lentiform nucleus and thalamus.
- C) Amygdaloid nucleus and caudate nucleus.
- D) Caudate nucleus and thalamus.
- E) Amygdaloid nucleus and Lentiform nucleus.

**Q12) Neuronal degeneration in the substantia nigra will produce:**

- A) Blindness.
- B) Huntington disease.
- C) Dementia.
- D) Multiple sclerosis.
- E) Parkinson disease.

**Q13) One of the following is false:**

- A) Parkinson's disease –intention tremor.
- B) Thalamocortical tract –direct and indirect excitatory.
- C) Lentiform nucleus –composed of the putamen and globus pallidus maintenance of body.
- D) Responsible for temperature (cooling) –anterior nucleus.

**Q14) choose the incorrect statement regarding the caudate nucleus:**

- A) Composed of head, body, and tail.
- B) Has no direct connection with the spinal cord.
- C) Medial to anterior limb of internal capsule if you look in a transverse section.
- D) Supplied by anterior and posterior cerebral artery.
- E) All of the above.

**Lectures 4 & 5**  
**(Ventricular System)**

**Q1. The lateral ventricle is the cavity of which of the following vesicles?**

- A) Mesencephalon
- B) Telencephalon
- C) Diencephalon
- D) Metencephalon
- E) Myelencephalon

**Q2. Right about corpus callosum :**

A) Below fornix

B) roof of the 3<sup>rd</sup> ventricles

**Q3. Lateral ventricle is connected with the third ventricle through the**

- A) Foramen of Magendie
- B) Foramen of Monro
- C) Foramen of luschka
- D) Cerebral aqueduct

**Q4. All of the following present in the posterior wall of the third ventricle except :**

- A) Cerebral aqueduct
- B) Lamina terminalis
- C) Pineal recess
- D) Habenular commissure
- E) Pineal body

**Q5. Concerning the brain ventricles, choose the correct statement :**

- A) There is no communication between the fourth ventricle and subarachnoid space
- B) The third and lateral ventricles communicates through cerebral aqueduct
- C) The third ventricle is considered the cavity of the diencephalon
- D) The body of the lateral ventricle extends into the frontal lobe
- E) The third and fourth ventricles communicates through the interventricular foramen

**Q6. Concerning the brain ventricles, choose the correct statement :**

- A) The body of the lateral ventricle extends into the frontal lobe
- B) The lateral ventricle is formed of body and 3 horns
- C) The third and fourth ventricles communicates through the interventricular foramen
- D) The third and lateral ventricles communicates through cerebral aqueduct
- E) There is no communication between the fourth ventricle and subarachnoid space

**Q7. Part of floor of the fourth ventricle :**

A) facial colliculus

B) SCP

C) Optic chiasma

D) Medial & lateral geniculate body

E) Thalamus

**Q8. All of the followings is true regarding fourth ventricle EXCEPT :**

- A) It's superior angle continuous with the cerebral aqueduct
- B) IMV connect the fourth ventricle to the subarachnoid space
- C) Inferior angle continuous with interventricular foramen
- D) It has a connection with spinal cord
- E) It's a diamond shape cavity

**Q9. one of the following structure doesn't found in the floor of the 3rd ventricle :**

A) lamina terminalis

B) optic chiasma

C) midbrain

D) tuber cinereum

**Q10. Which of the following forms the floor of the anterior horn of the lateral ventricle ?**

A) Hypothalamic sulcus.

B) hippocampus.

C) collateral eminence.

D) head of the caudate nucleus.

E) body of the caudate nucleus and the lateral margin of the Thalamus

**Q11. Which of the following forms the lateral wall of third ventricle ?**

A) Lamina terminalis.

B) Pineal body.

C) Ependyma.

D) Corpus callosum.

E) Thalamus.

**Q12. Which one of the following forms the roof of the body of the lateral ventricle ?**

- A) head of the caudate nucleus.
- B) inferior surface of the tapetum of the corpus callosum.
- C) Anterior part of the corpus callosum.
- D) undersurface of the corpus callosum.
- E) tapetum of the corpus callosum

**Q13. What the part of lateral ventricles in temporal lobe:**

- A) Inferior horn
- B) Post horn
- C) Anterior horn

**Q14. The lateral aperture in the fourth ventricles connect with:**

- A) Epidural space
- B) Subarachnoid space
- C) Subdural space

**Q15. Concerning the cerebrospinal fluid, the wrong statement is ?**

- A) Protects the brain and spinal cord.
- B) Secreted by choroid plexus.
- C) fills the brain ventricles and the central canal of the spinal cord.
- D) Pass through the subdural space.
- E) Absorbed by arachnoid granulation.

**Q16. Concerning the cerebrospinal fluid, select the incorrect statement**

- A) Protects the brain and the spinal cord
- B) Absorbed by arachnoid granulations
- C) Fills the brain ventricles and the central canal of the spinal cord
- D) Secreted by choroid plexus
- E) Does not pass in the subarachnoid space

**Q17. Example of gray matter :**

A) Lateral ventricles

B) Cerebral cortex

C) 3rd ventricles

**Q18. Superior angle of the 4th ventricle attached to?**

ANSWER : cerebral aqueduct

**Q19. CSF is drained by:**

ANSWER: arachnoid villi and granulations

**Q20. Which of the following is true:**

ANSWER: third ventricle is connected to the lateral ventricle by interventricular foramen.

# **Lecture 6**

## **(Diencephalon)**

**Q1. Which one of the following statements is incorrect about the thalamus?**

- A) It is a part of the diencephalon
- B) is formed of grey matter
- C) Lies on the medial surface of the brain
- D) Forms part of the medial wall of the third ventricle
- E) Considered as the main sensory station of the human brain

**Q2. Which of the following thalamic nuclei influences levels of consciousness and alertness?**

- A) Anterior thalamic nuclei
- B) Ventral lateral nucleus
- C) Ventral posteromedial nucleus
- D) Ventral anterior nucleus
- E) Intralaminar nuclei

**Q3. Thalamus is the relay station for all sensory information of all types**

**EXCEPT:**

A) Olfaction

B) Vision

C) Hearing

D) Crude touch

E) Pain and temperature

**Q4. Which one of the thalamic nuclei concerned with sensation from the head and neck region ?**

- A) Ventroposterolateral.
- B) Ventroposteromedial.
- C) Anterior nucleus.
- D) Intralaminar nucleus.
- E) Ventrolateral

**Q5. Which of the following thalamic nuclei is concerned with emotional tone and the mechanisms of recent memory?**

A) MGB

B) LGB

C) Anterior thalamic

D) VPL

**Q6. Which of the following thalamic nuclei receives gustatory fibers?**

A) VPM

B) VPL

C) MGB

D) VA and VL

E) LGB

**Q7. Which of the following statements is incorrect:**

- A) Ventrolateral nucleus (VL) → sensory cortex
- B) Ventral Posterolateral (VPL) → Relays common sensations
- C) Ventral Posteromedial (VPM) → Relays common sensations, Head & Neck
- D) Intralaminar nuclei → influence the levels of consciousness and alertness

# **The Cerebellum**

**Q1) The flocculonodular lobe is separated from the rest of the cerebellum by:**

- A) Paravermal fissure
- B) Horizontal fissure
- C) Primary fissure
- D) Posterolateral fissure
- E) Retrotonsillar fissure

**Q2) The most laterally located cerebellar nucleus is:**

- A) Fastigial
- B) Globous
- C) Emboliform
- D) Dentate
- E) Caudate

**Q3) The function of the vermis is to:**

- A) Influences the movements of the long axis of the body.
- B) Control muscles of the distal parts of the limbs.
- C) Concerned with planning of sequential movements of the entire body.
- D) Short memory.
- E) Emotions.

**Q4) The only output of the cerebellar system is:**

- A) Purkinje cells.
- B) Granular cells.
- C) Stellate cells.
- D) Basket cells.
- E) Golgi cells.

**Q5) Inferior cerebellar peduncle connects:**

- A) Cerebellum with pons.
- B) Cerebellum with midbrain.
- C) Cerebrum with medulla oblongata.
- D) Cerebellum with medulla oblongata.
- E) Cerebrum with pons.

**Q6) Anterior & posterior lobe of the cerebellum separated by:**

- A) Horizontal fissure.
- B) Posterolateral fissure.
- C) Primary fissure.
- D) Median fissure.
- E) Lateral fissure.

**Q7) All of the following are cerebellar lesions EXCEPT:**

A) Dysdiadochokinesia.

B) Dysarthria.

C) Dysmetria.

D) Hypotonia.

E) Static tremors.

**Q8) Which of the following represents failure of progression of movement?**

- A) Dysdiadochokinesia.
- B) Wide-based gait.
- C) Dysmetria.
- D) Hypotonia.
- E) Static tremors.

**Q9) The term “Dysdiadochokinesia” means:**

- A) Disorders of speech.
- B) Rhythmic oscillations of the eyes.
- C) Alternation of gait.
- D) Struggling to perform fast alternating movements.
- E) Loss of muscle tone.

**Q10) Regarding structure and function of the cerebellar cortex, all of the following are true EXCEPT:**

- A) Granule cells use GABA as a neurotransmitter.
- B) Golgi cells are located in the granular layer.
- C) Climbing fibers are the terminal fibers of the olivocerebellar tract.
- D) Climbing fiber stimulate Purkinje cell directly.
- E) A single Purkinje neuron makes synaptic contact with only one climbing fiber.

**Q11) Fibers that leave the interposed nuclei to reach red nucleus pass through:**

- A) Middle cerebellar peduncle.
- B) Cerebral peduncle.
- C) Superior cerebellar peduncle.
- D) Pyramids.
- E) Inferior cerebellar peduncle.

**Q12) A term that describes the cerebellar disease “Dysmetria” is:**

- A) Hypotonia.
- B) Past pointing.
- C) Ataxia.
- D) Tremors.
- E) Dysdiadochokinesia.

**Q13) The word nystagmus means:**

- A) Rhythmic oscillations of the eyes.
- B) Past pointing.
- C) Disorders of speech.
- D) Involuntary oscillations of limbs.
- E) Difficulty performing rapid alternating movements.

**Q14) Flocculo-nodular function is:**

- A) Equilibrium.
- B) Muscle tone.
- C) Coordination of movement.
- D) Voluntary movement.
- E) Postural control.

**Q15) Which of the following is wrong about cerebellum?**

- A) The most lateral cerebellar nucleus is dentate.
- B) Golgi cells are in molecular layer of the cerebellar cortex.
- C) Climbing fibers are from the olivocerebellar tracts.
- D) None of the above.

**Q16) One of the following is wrong about spinocerebellar tract:**

- A) The vermis will send efferents through fastigial nucleus.
- B) Efferents to interposed nucleus through the inferior cerebellar peduncle to the red nucleus.
- C) Controls posture and movement of trunk and limbs.
- D) It receives major inputs from the spinocerebellar tracts.

# **Blood Supply of the CNS**

**1. Choose the Incorrect statement regarding the caudate nucleus:**

- A) Is a part of the basal nuclei
- B) Has no direct connection with the spinal cord
- C) Lies medial to the anterior limb of internal capsule in the transverse section of the brain
- D) Is composed of head, body and tail
- E) Supplied by anterior and posterior cerebral arteries

**2. All of the following are branches of basilar artery EXCEPT:**

- A) Labyrinthine artery
- B) Posterior inferior cerebellar artery
- C) Anterior inferior cerebellar artery
- D) Pontine arteries
- E) Superior cerebellar artery

**3. One of the following arteries is NOT a branch of the basilar artery:**

A) Internal auditory

B) None of the above

C) Anterior inferior cerebellar

D) Posterior inferior cerebellar

E) Superior cerebellar

**4. Regarding Hematomas, Choose the INCORRECT statement:**

- A) Subdural hematoma does not cross suture line
- B) Chronic subdural hematoma can remain undetected
- C) Epidural hematoma could occur due to fracture of pterion
- D) Subdural hematoma is mainly venous
- E) Subarachnoid hematoma occur due to tearing of cerebral arteries or Aneurysm

## 5. Occlusion of the middle cerebral artery will produce?

- A) Ipsilateral paralysis and sensory deficit of the leg and foot
- B) Contralateral paralysis and sensory deficit of the arm and face
- C) Ipsilateral paralysis and sensory deficit of the arm and face
- D) Contralateral paralysis and sensory deficit of the leg and foot
- E) Blindness

**6. One of the following neurological findings could be manifested by Posterior cerebral artery lesion:**

A) Squint

B) Visual agnosia

C) Inability to abduct eyes

D) Conjugate movement of both eyes to the opposite side

E) Sensory aphasia

**7. Arterial supply of the anterior ends of caudate and lentiform nuclei is derived from:**

A) Anterior cerebral

B) Middle cerebral

C) Basilar

D) Vertebral

E) Posterior cerebral

## 8. Anterior limb of internal capsule supplied by

- A) Ophthalmic A
- B) MCA
- C) ACA
- D) Basilar artery
- E) Subclavian artery

**9. One of the following is not part of circle willis:**

- A) Basilar artery
- B) Right cerebral artery
- C) Posterior cerebral artery
- D) Posterior communicating artery
- E) Middle cerebral artery

**10. All of the following Branch of the vertebral artery EXCEPT:**

- A) Posterior inferior cerebellar artery
- B) Anterior spinal artery
- C) Posterior spinal artery
- D) Anterior inferior cerebellar artery
- E) None of the following

**11. Occlusion in which artery causes motor aphasia:**

- A) Anterior cerebral artery
- B) Middle cerebral artery
- C) Posterior inferior cerebral artery

**12. Occlusion of the anterior cerebral artery cause which of the following?**

- A) contralateral paralysis and sensory deficits in the leg/foot
- B) ipsilateral paralysis and sensory deficits in the leg/foot
- C) contralateral paralysis and sensory deficits in the hand and back
- D) ipsilateral paralysis and sensory deficits in the hand and back
- E) contralateral paralysis and sensory deficits of face, arm, aphasia.

**13. Which of the following folds of dura matter covers the hypophysial fossa?**

- A) Falx cerebelli
- B) Falx cerebri
- C) Tentorium cerebelli
- D) Falx sellae
- E) Diaphragma sellae

**14. Which one of the following arteries is not supplying the internal capsule?**

A) Anterior choroidal

B) Posterior choroidal

C) Middle cerebral

D) Posterior cerebral

E) Anterior cerebral

**15. All the following are branches from the internal carotid, except?**

- A) Choroidal artery
- B) Ophthalmic artery
- C) Posterior cerebral artery
- D) Middle cerebral artery
- E) Anterior cerebral artery

**16. Which of the following separates cerebrum from cerebellum?**

- A) Falx cerebelli
- B) Diaphragma sellae
- C) Falx cerebri
- D) Tentorium cerebelli
- E) Meckel's cave

**17. Which of the following arteries supplies all motor area except the leg area?**

- A) Anterior inferior cerebellar artery
- B) Posterior cerebral artery
- C) Middle cerebral artery
- D) Posterior inferior cerebellar artery
- E) Anterior cerebral artery

# **Development of the CNS**

**1. the posterior lobe of the pituitary gland developed from the:**

- A) prosencephalon
- B) diencephalon
- C) myelencephalon
- D) rhombencephalon
- E) neural crest

## 2. Which match between the structure and part of the brain is false:

- A) Thalamus – diencephalon
- B) Cerebellum – rhombencephalon
- C) Corpus callosum – telencephalon
- D) Pons – mesencephalon
- E) Tectum – mesencephalon

### 3. rhombencephalon gives rise to:

- A) medulla
- B) midbrain
- C) thalamus
- D) cerebral aqueduct
- E) cerebral cortex

**4. which of the following is not a part of prosencephalon:**

- A) White matter
- B) Cortex
- C) Basal ganglia
- D) Hypothalamus
- E) Midbrain

**5. one of the following isn't a division of rhombencephalon:**

A) medulla

B) midbrain

C) pons

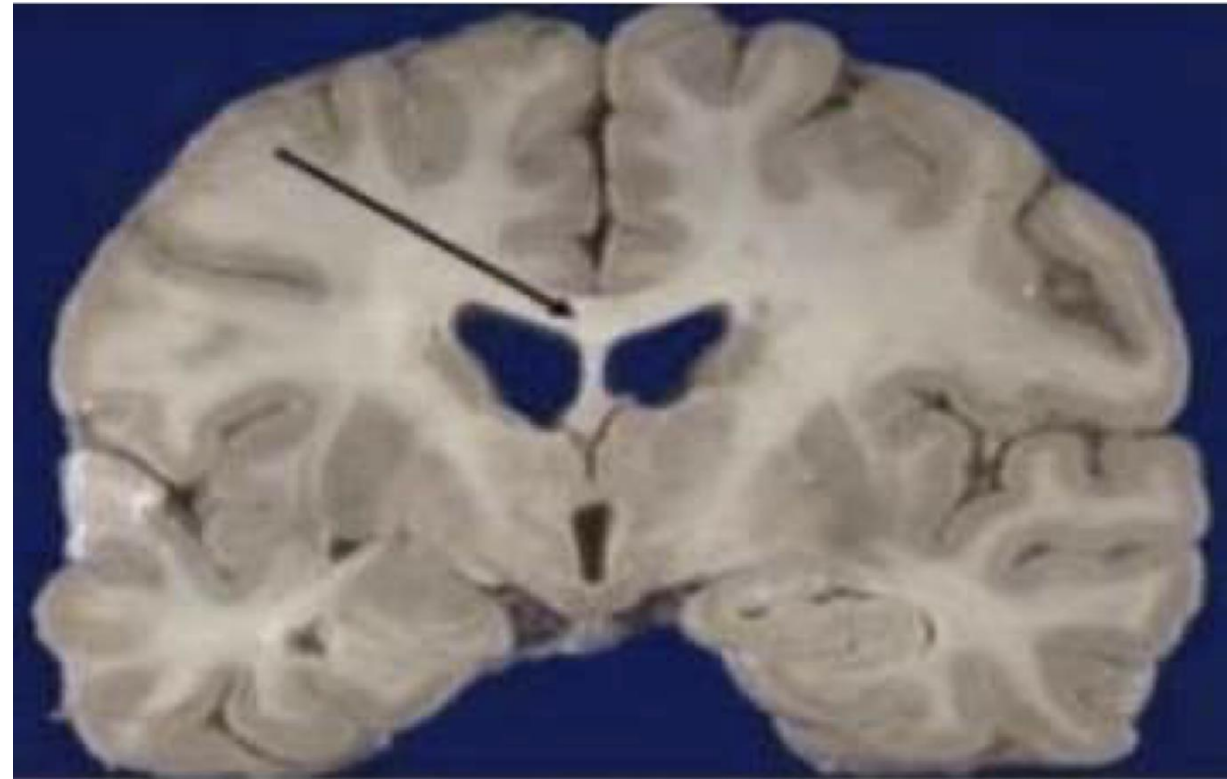
D) cerebellum

E) 4th ventricle

# **Anatomy LAB**

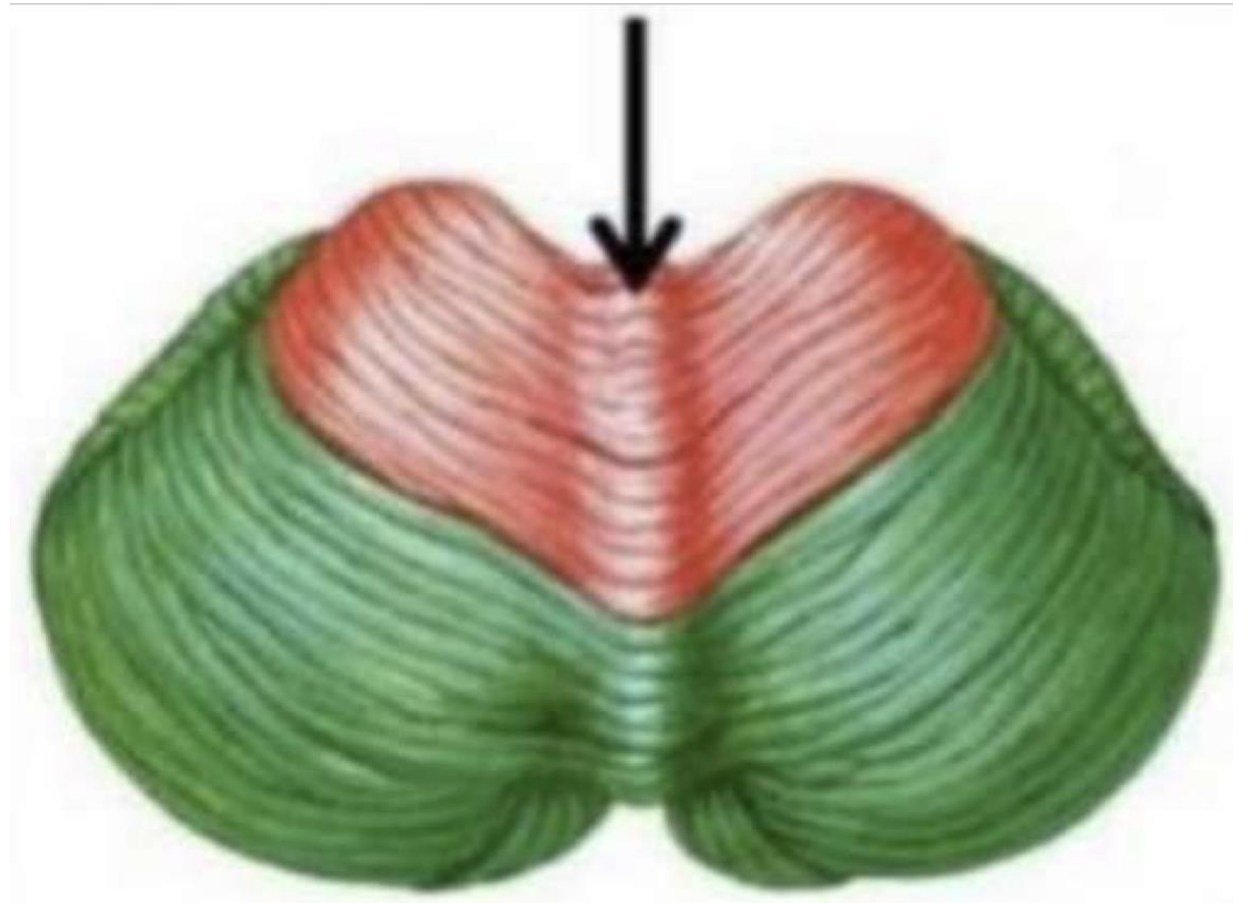
**Q1) The pointed structure forms the roof of ..... in this particular section:**

- A) Posterior horn of lateral ventricle.
- B) Inferior horn of the lateral ventricle.
- C) Body of the lateral ventricle.
- D) Fourth ventricle.
- E) Anterior horn of the lateral ventricle.



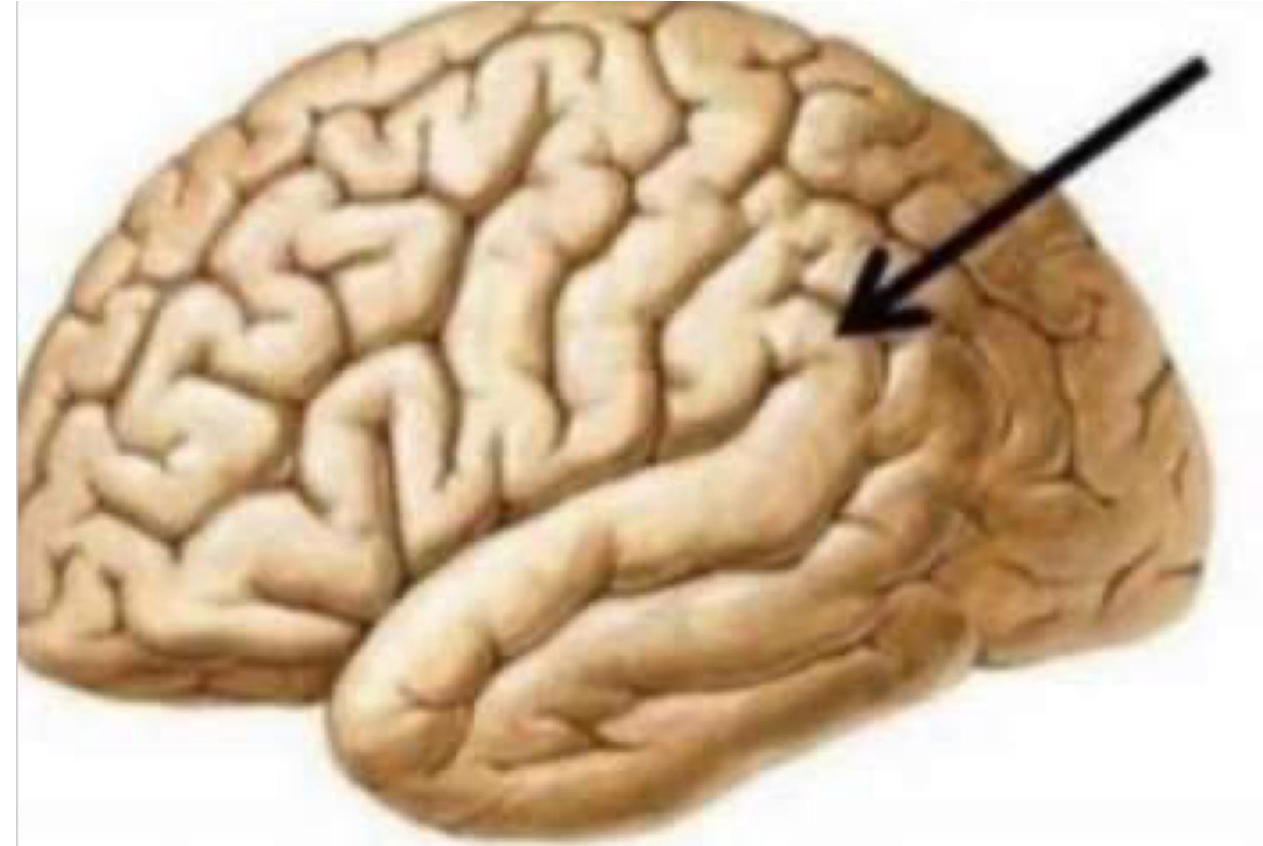
**Q2) The pointed structure is connected with one of the following deep nuclei:**

- A) Fastigeal.
- B) Globose.
- C) Emboliform.
- D) Dentate.
- E) Floculonodular.



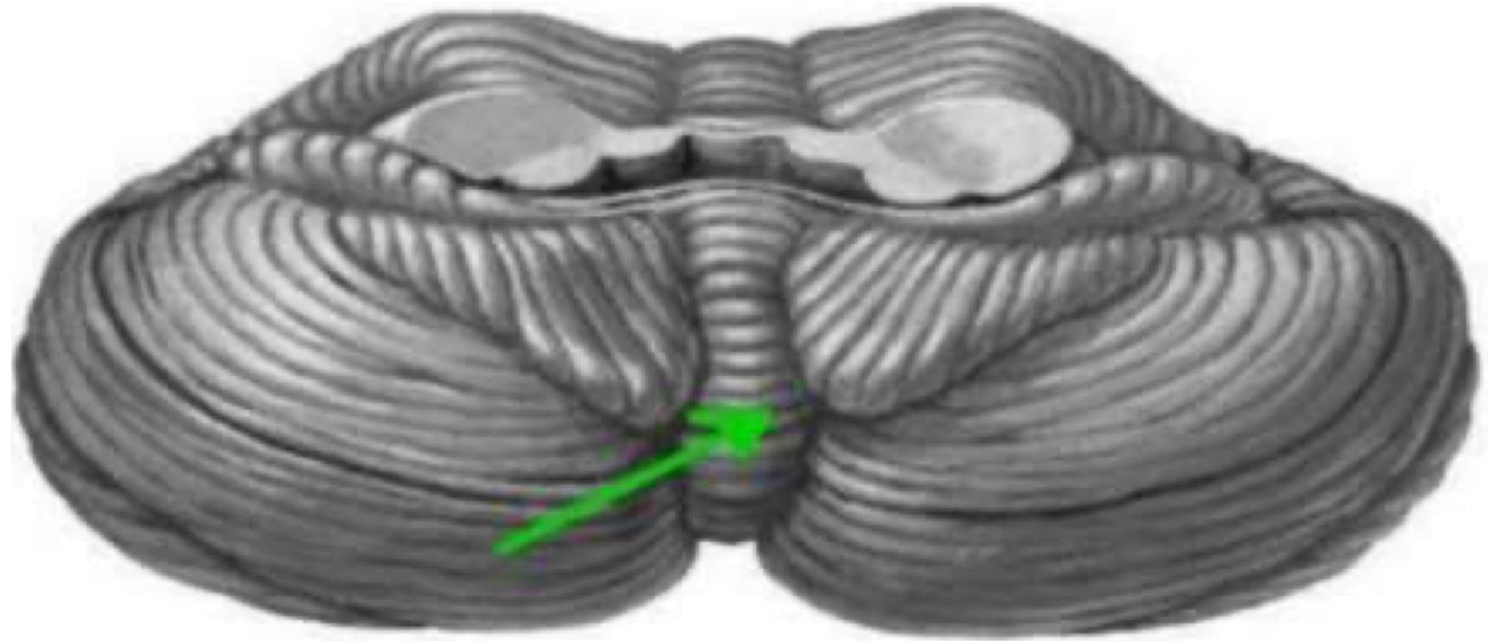
**Q3) Which of the following statements is incorrect about the pointed structure:**

- A) Responsible for understanding both written and spoken words.
- B) Its lesion produce sensory aphasia.
- C) Is connected to inferior frontal gyrus.
- D) Responsible for controlling motor muscles that produce speech.
- E) Supplied by the middle cerebral artery.



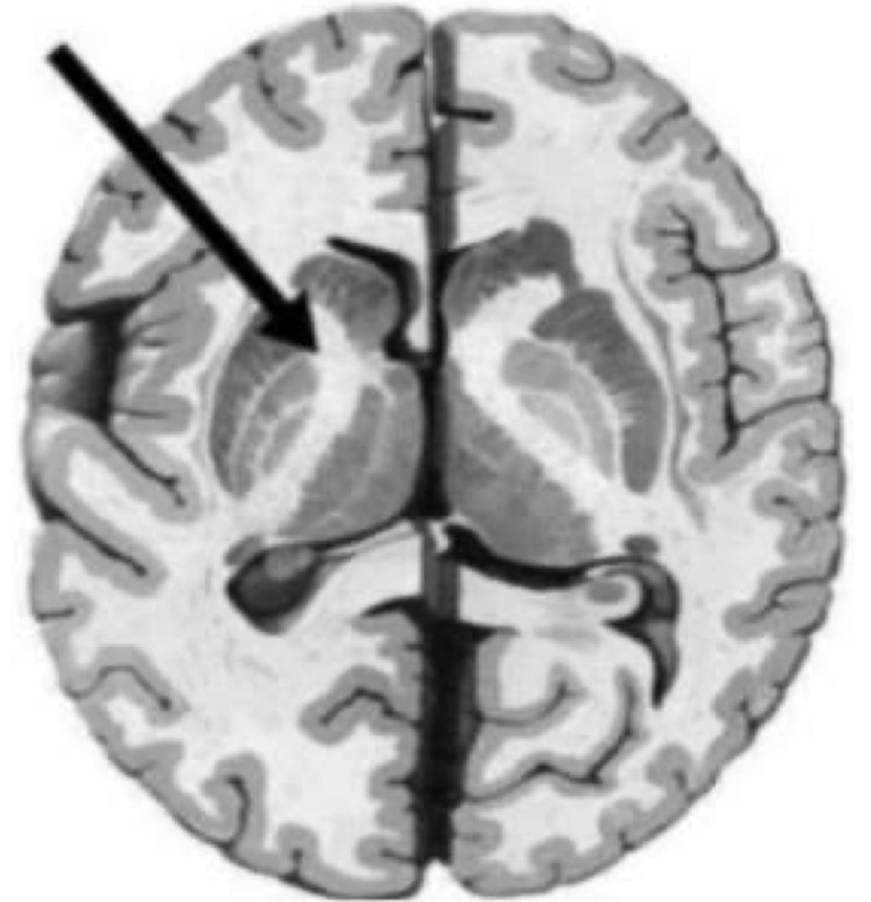
**Q4) Identify the pointed structure:**

- A) Tonsils.
- B) Middle cerebellar peduncle.
- C) Inferior vermis.



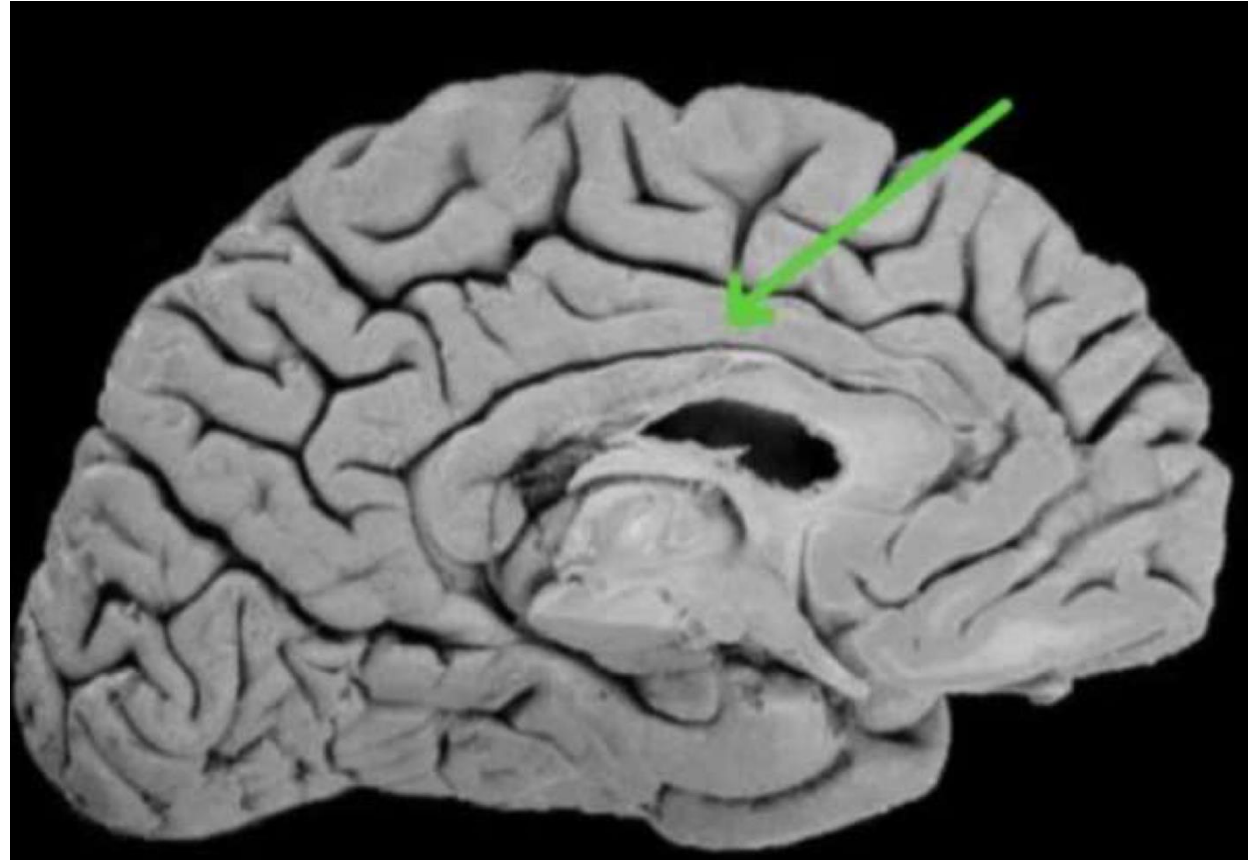
**Q5) The pointed structure is situated between:**

- A) The thalamus and the hypothalamus.
- B) The caudate and Lentiform nucleus.



**Q6) What is the function of the pointed gyrus?**

- A) Behavior and emotions.
- B) Vision.



**Q7) Identify the pointed structure:**

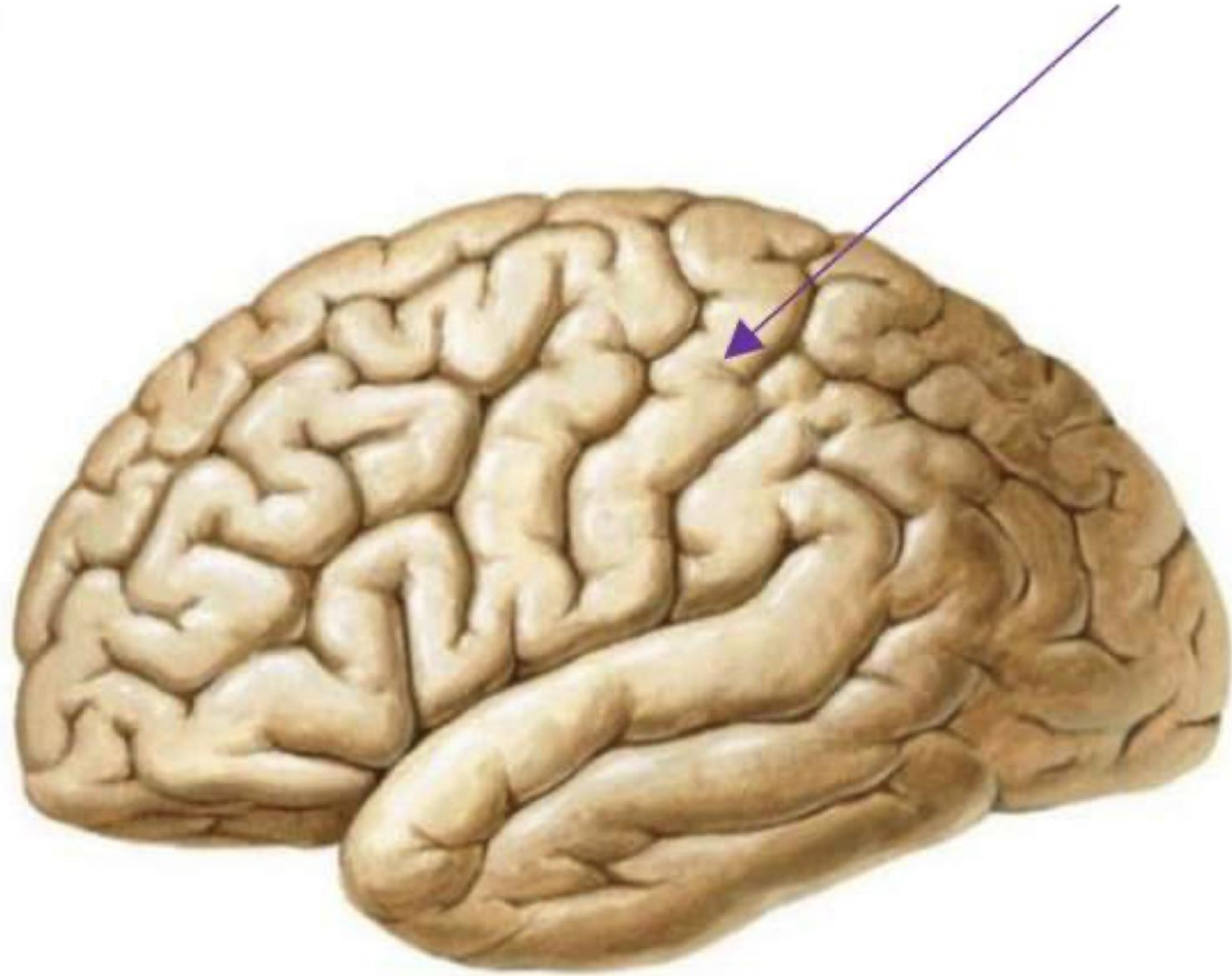
A) Fornix.

B) Pineal gland.



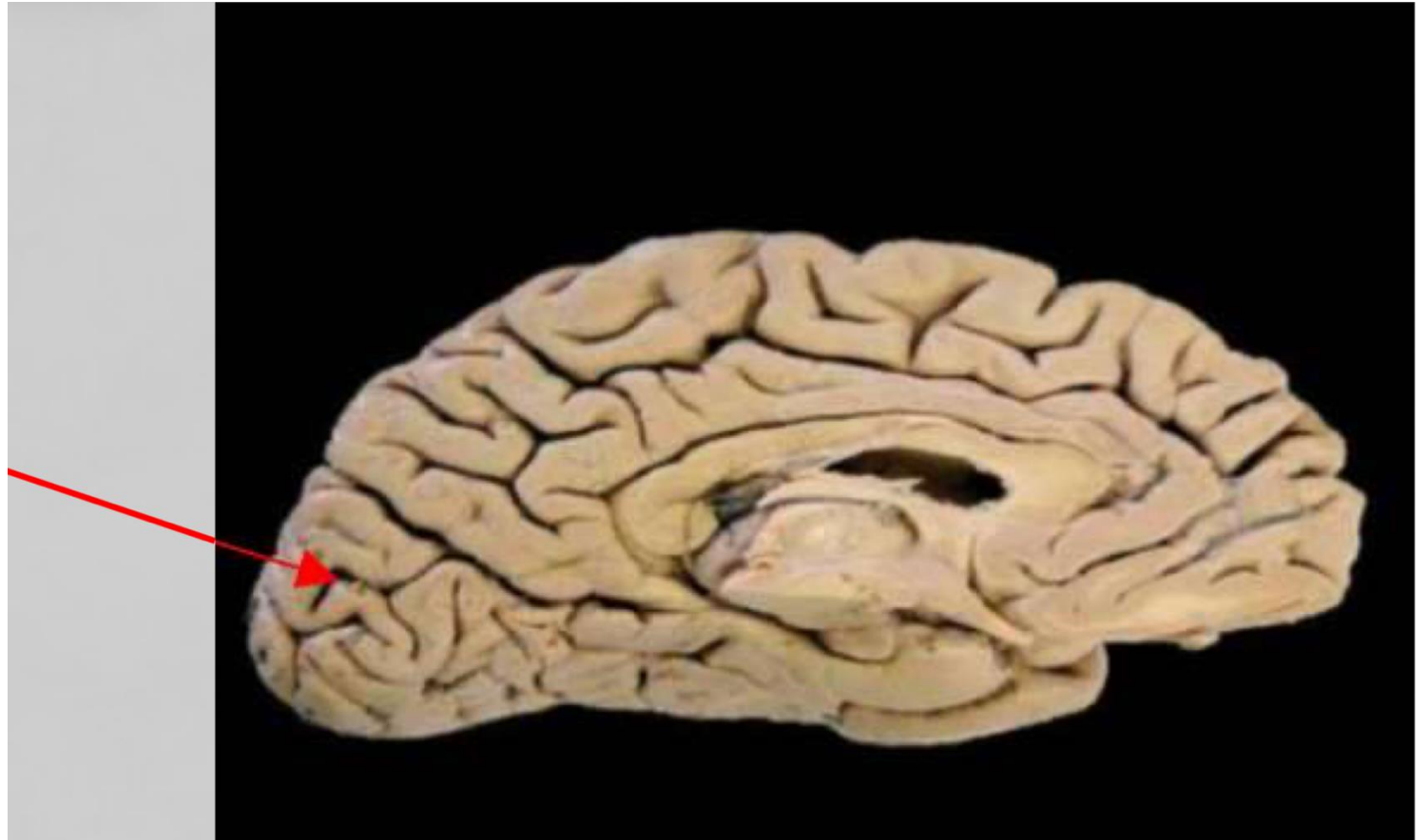
**Q8) The purple arrow refers to:**

- A) Postcentral gyrus.
- B) Precentral gyrus.
- C) Premotor area.



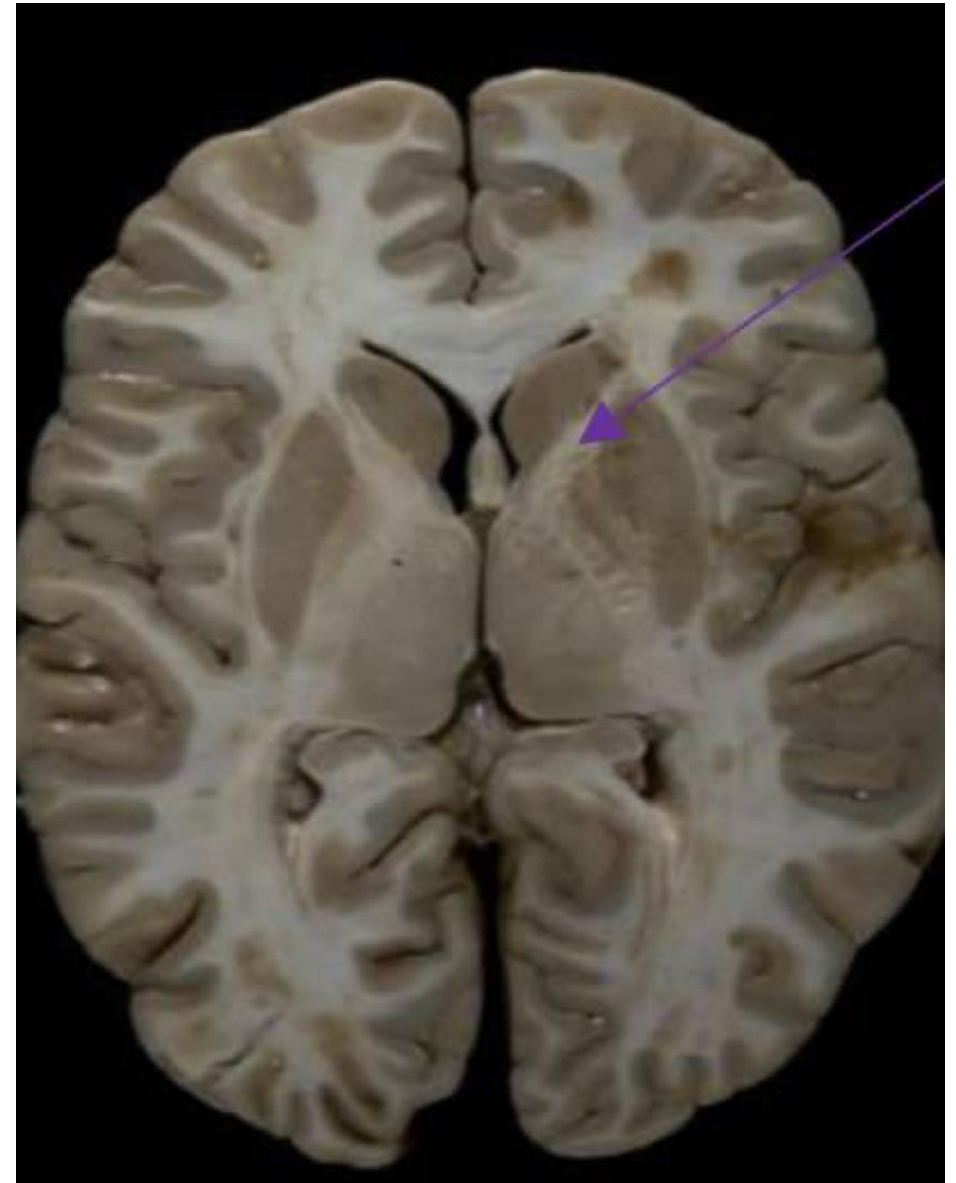
**Q9) The red arrow refers to:**

- A) Central sulcus.
- B) Lateral fissure.
- C) Calcarine sulcus.



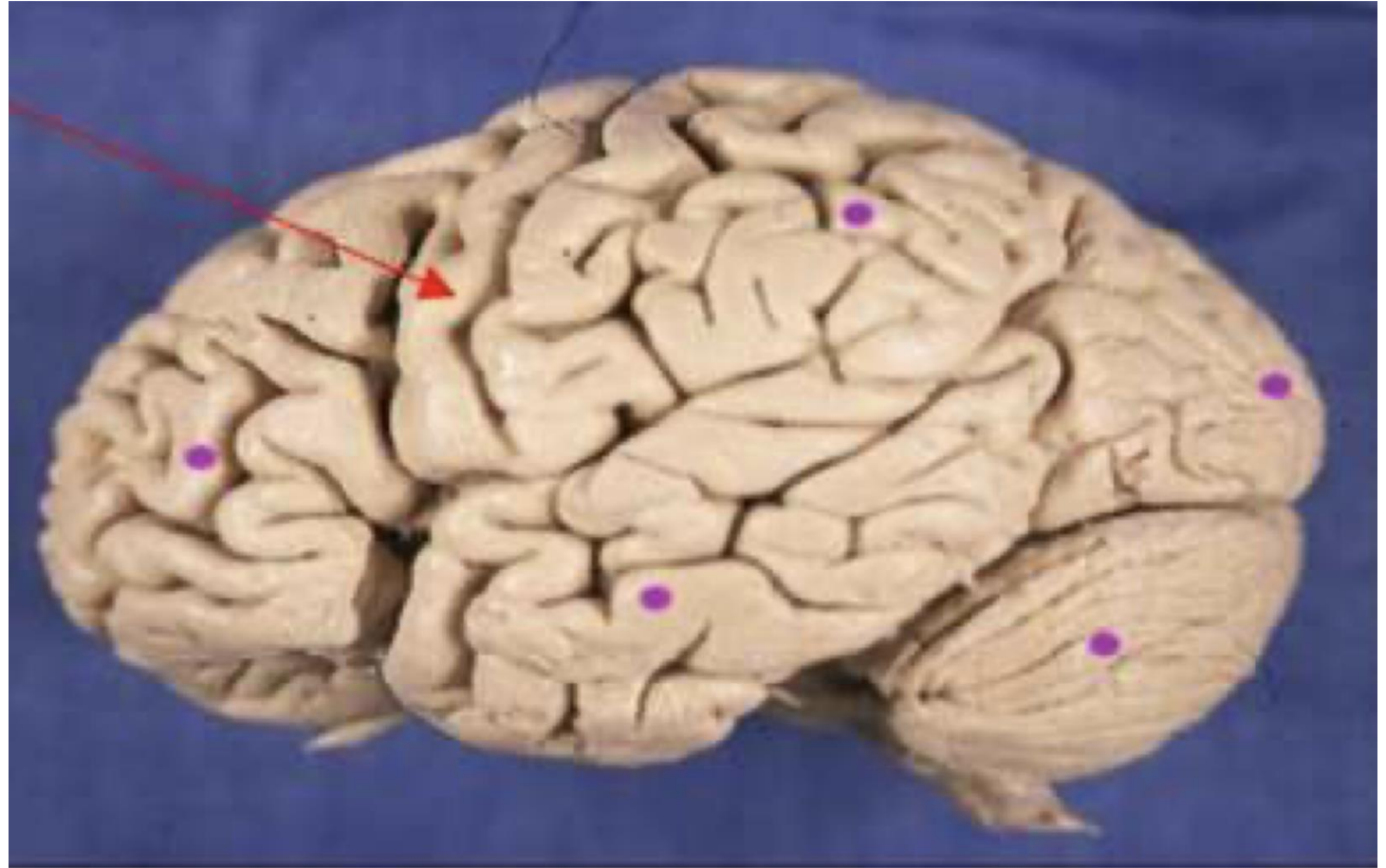
**Q10) The purple arrow refers to:**

- A) Thalamus.
- B) Lateral ventricle.
- C) Anterior limb of internal capsule.



**Q11) The arrow refers to:**

- A) Postcentral gyrus.
- B) Precentral gyrus.
- C) Wernick's area.



**Q12) The arrow refers to:**

- A) Thalamus.
- B) Lateral ventricle.
- C) Anterior limb of internal capsule.



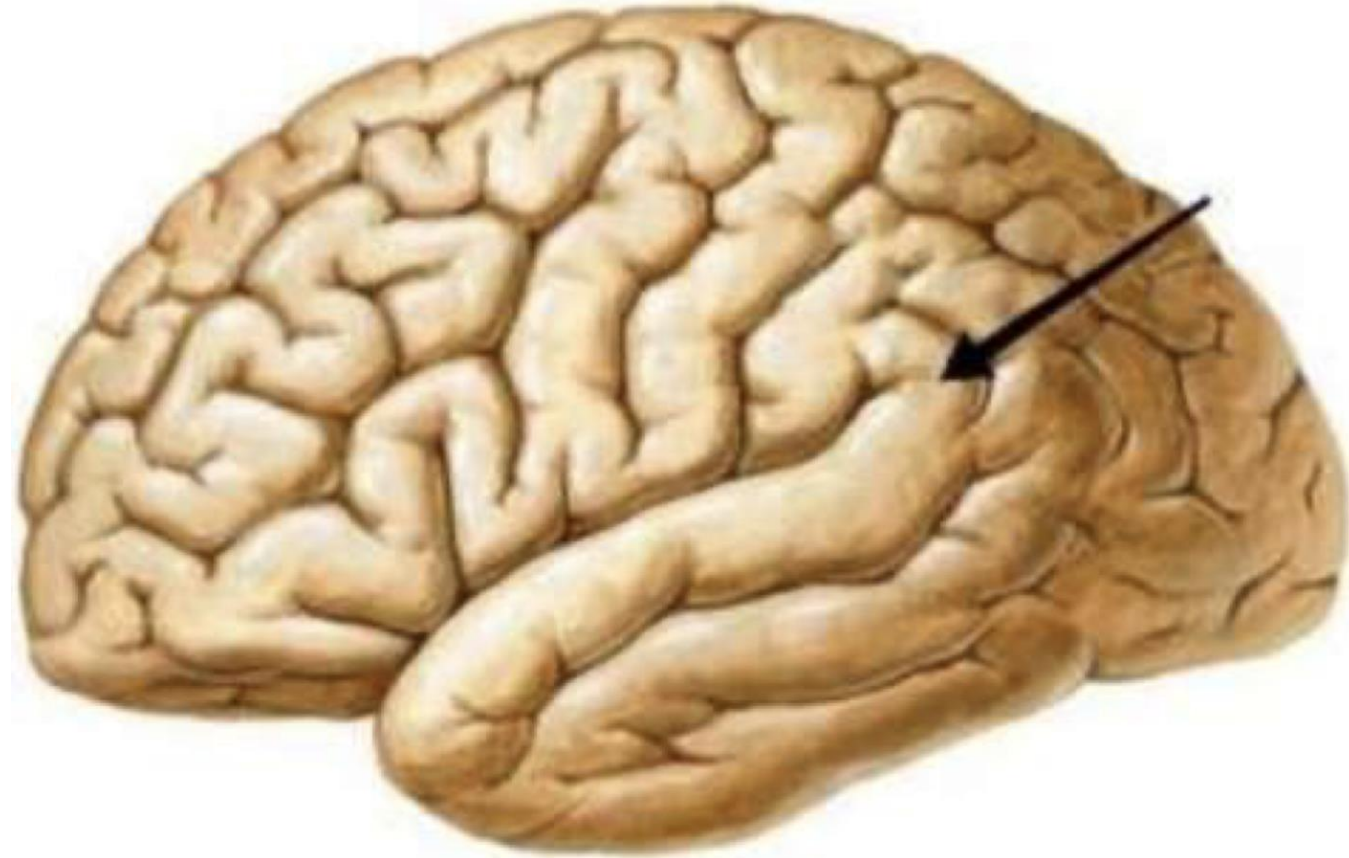
**Q13) The pointed structure is related to which of the following?**

- A) Third ventricle.
- B) Fourth ventricle.
- C) Lateral ventricle.
- D) Third and fourth ventricles.
- E) Lateral and third ventricles.



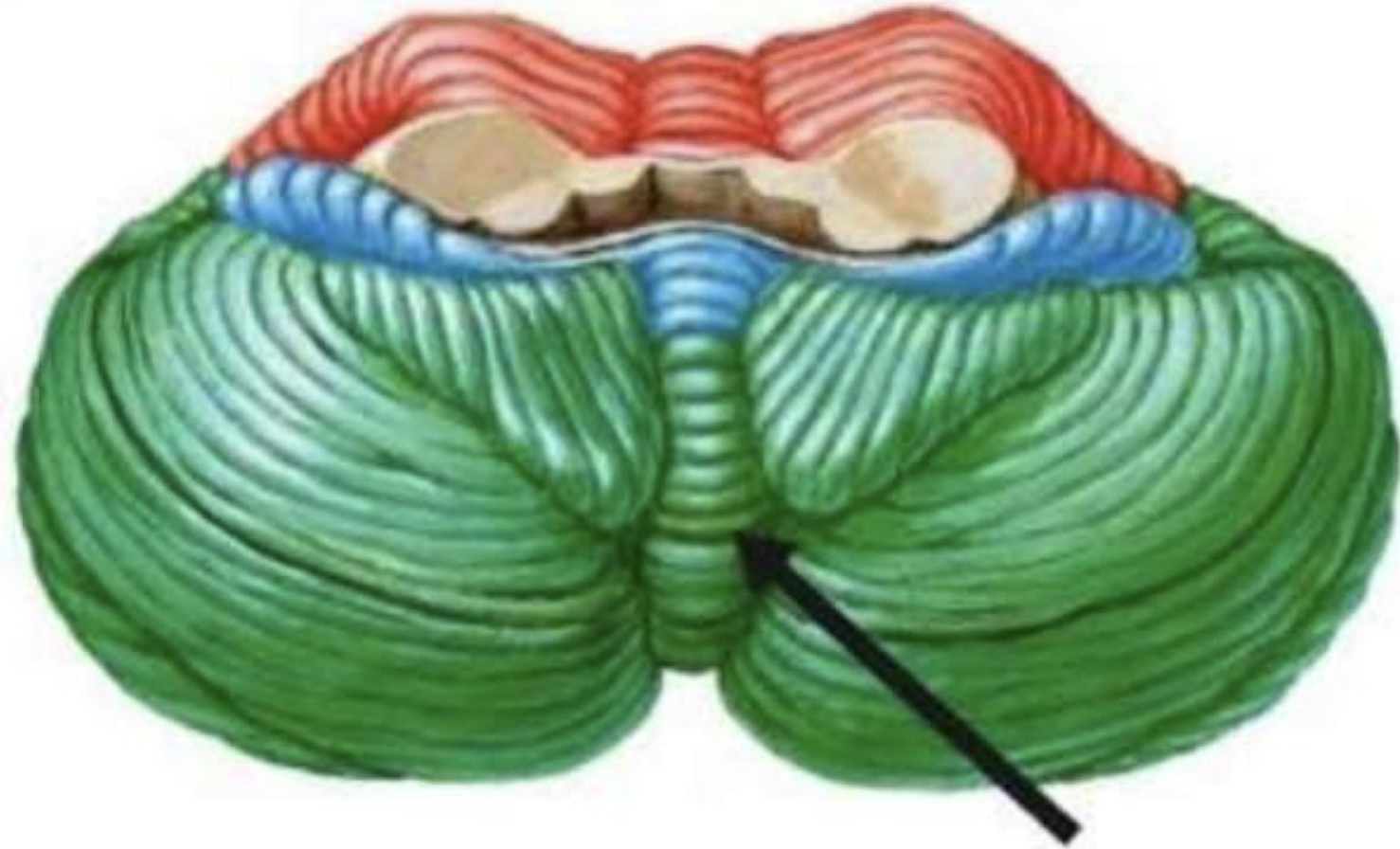
**Q14) Identify the pointed structure:**

- A) Angular gyrus.
- B) Supramarginal gyrus.
- C) Ascending gyrus.



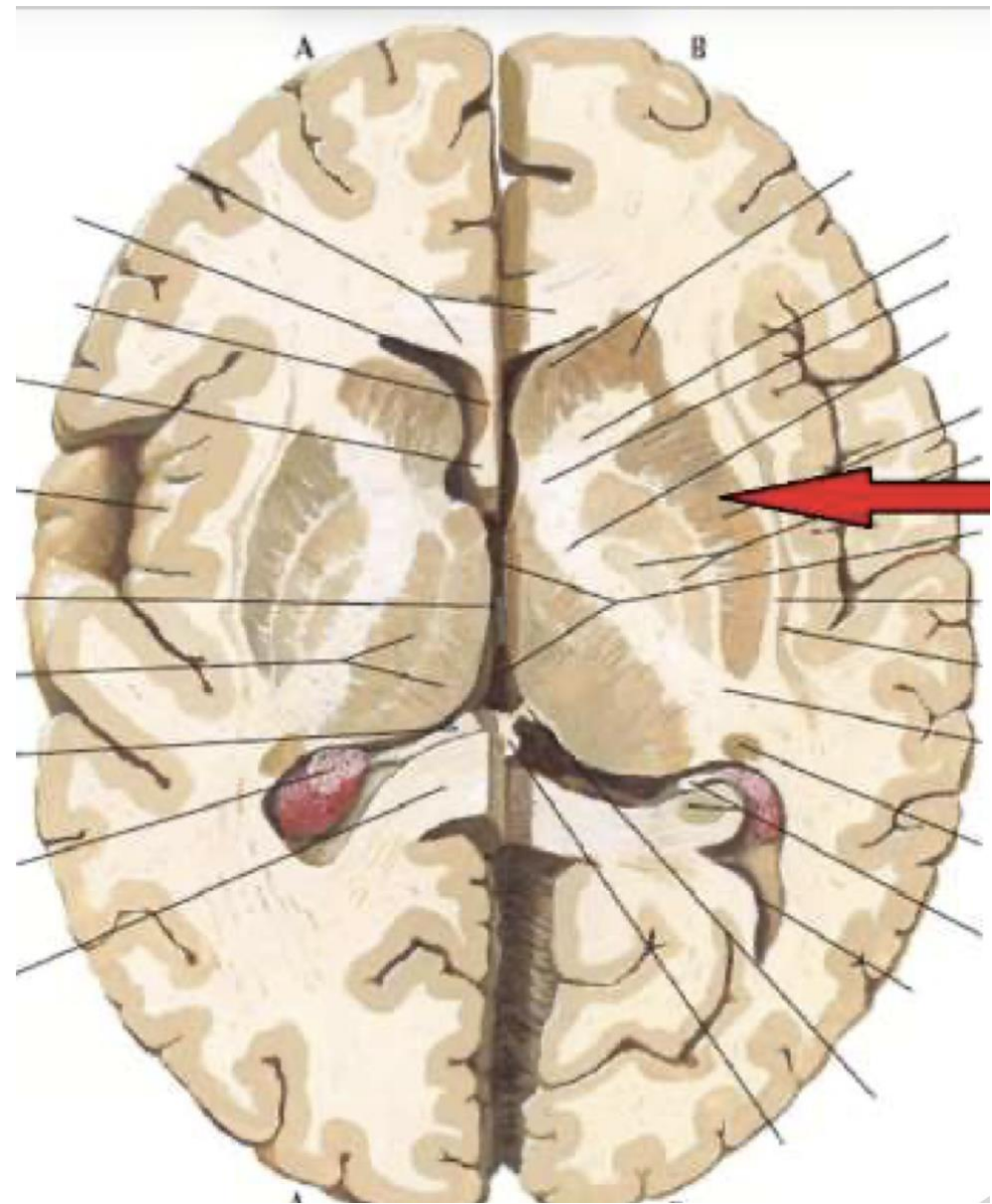
**Q15) Identify the pointed structure:**

- A) Vermis.
- B) Tonsil.



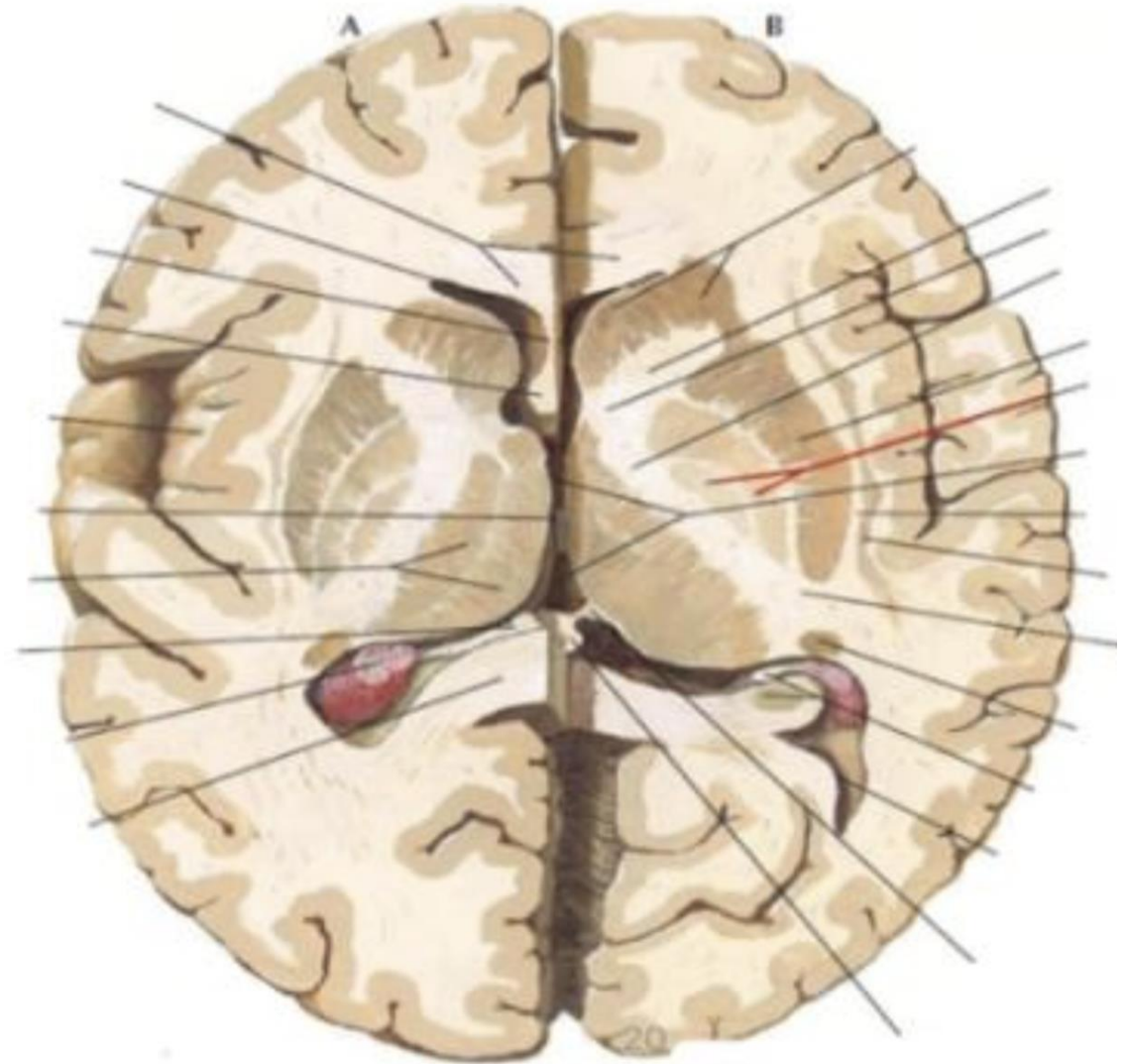
**Q16) The pointed structure is:**

- A) Caudate nucleus.
- B) Claustrum.
- C) Amygdaloid nucleus.
- D) Putamen nucleus.
- E) Globus pallidus.



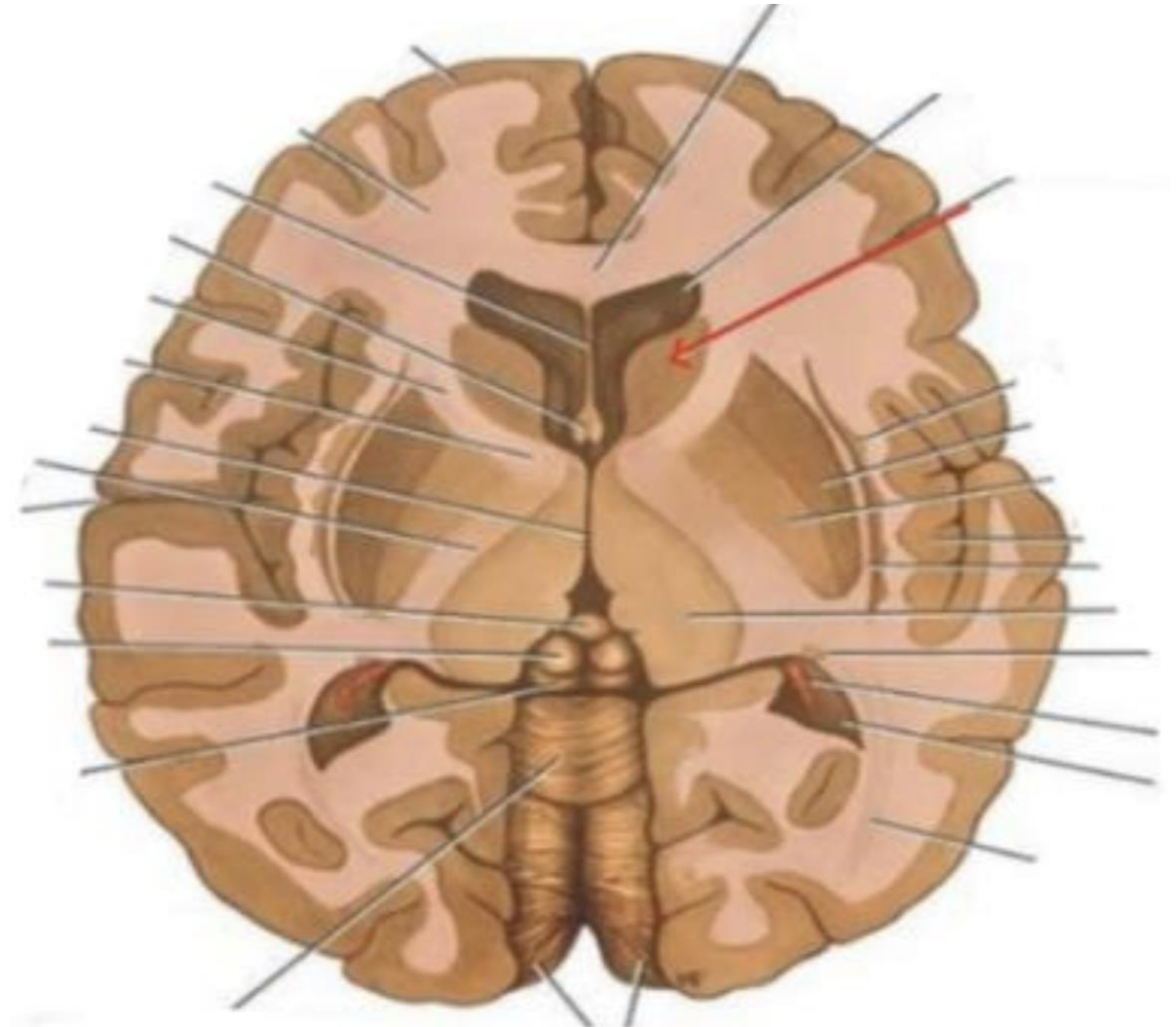
**Q17) The pointed structure in red is:**

- A) Head of caudate nucleus.
- B) Claustrum.
- C) Amygdaloid nucleus.
- D) Putamen nucleus.
- E) Globus pallidus.



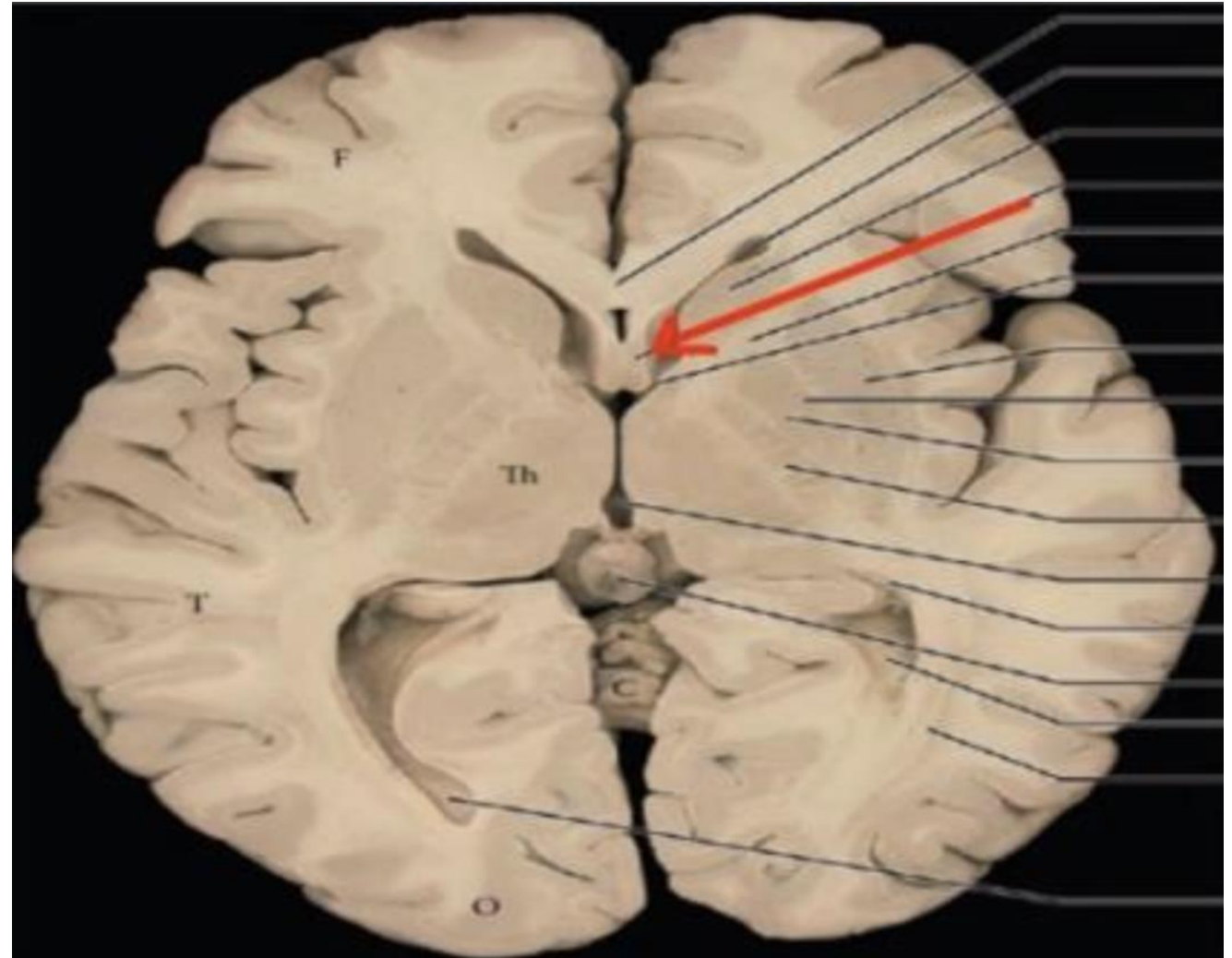
**Q18) The pointed structure in red is:**

- A) Head of caudate nucleus.
- B) Claustrum.
- C) Amygdaloid nucleus.
- D) Putamen nucleus.
- E) Globus pallidus.



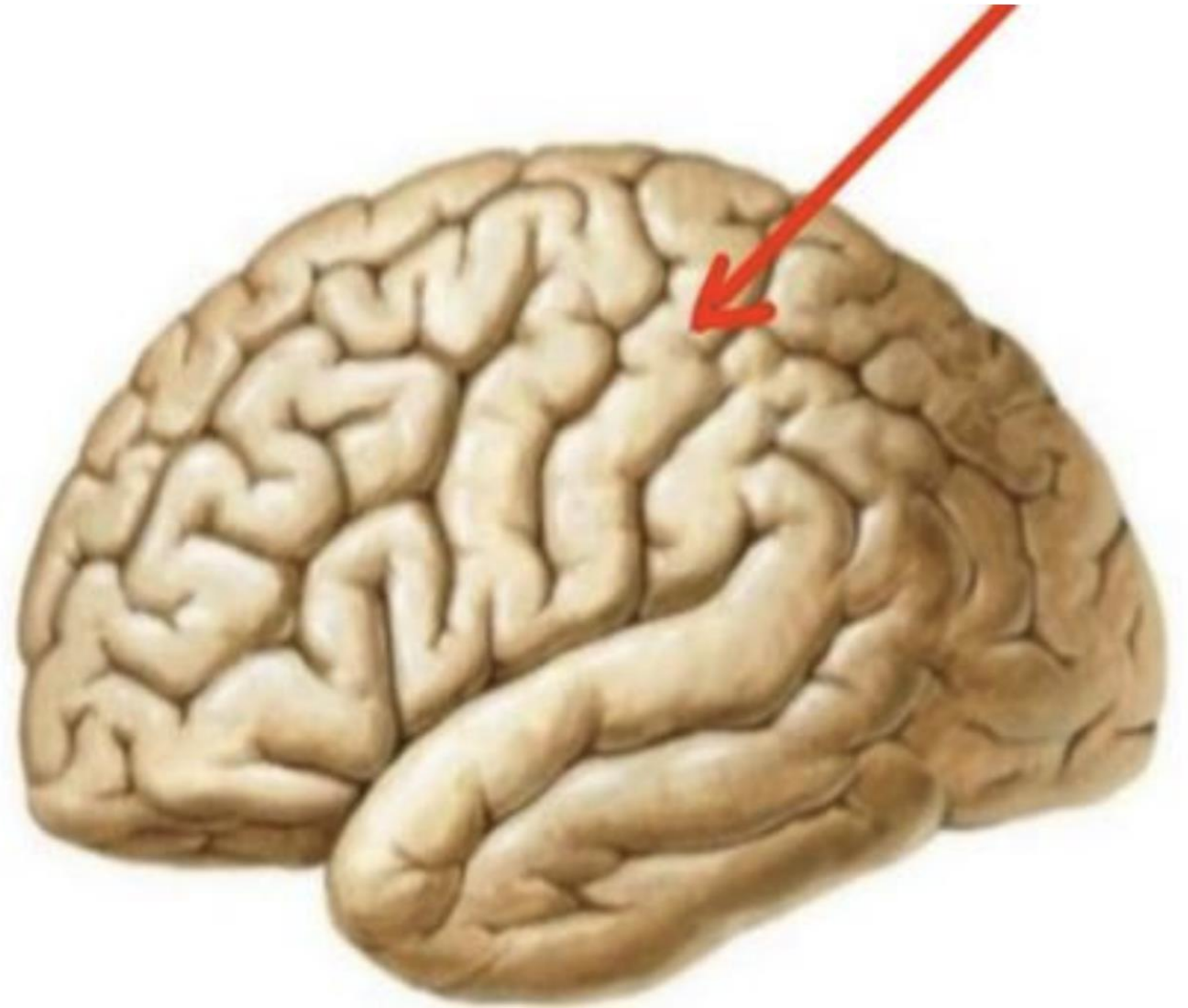
**Q19) Arrow pointing to:**

- A) Thalamus.
- B) Fornix.
- C) Amygdaloid nucleus.
- D) Putamen nucleus.
- E) Lateral and third ventricles.



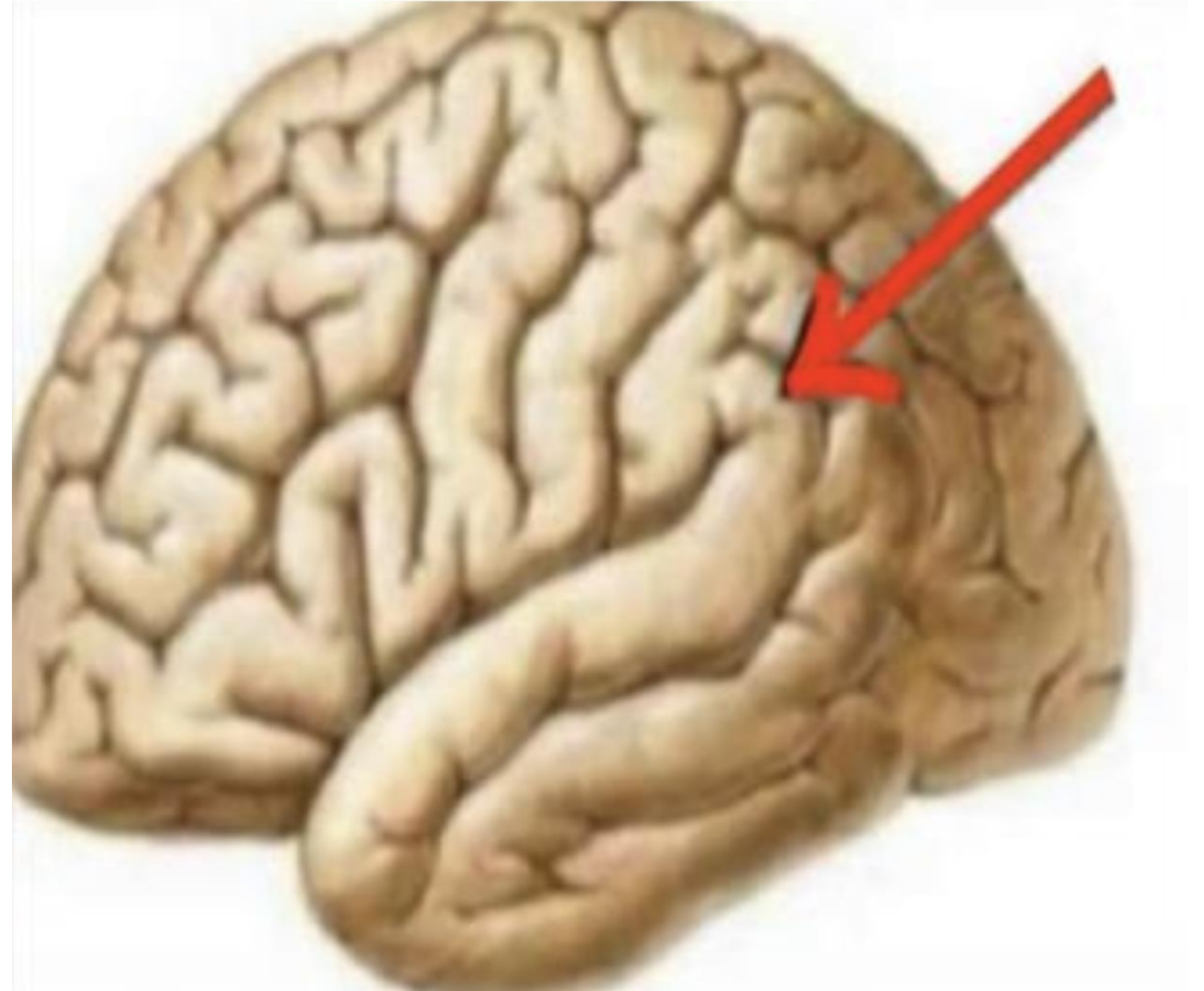
**Q20) The red arrow refers to:**

- A) Precentral gyrus.
- B) Calcarine sulcus.
- C) Postcentral gyrus.
- D) Angular gyrus.
- E) Supramarginal gyrus.



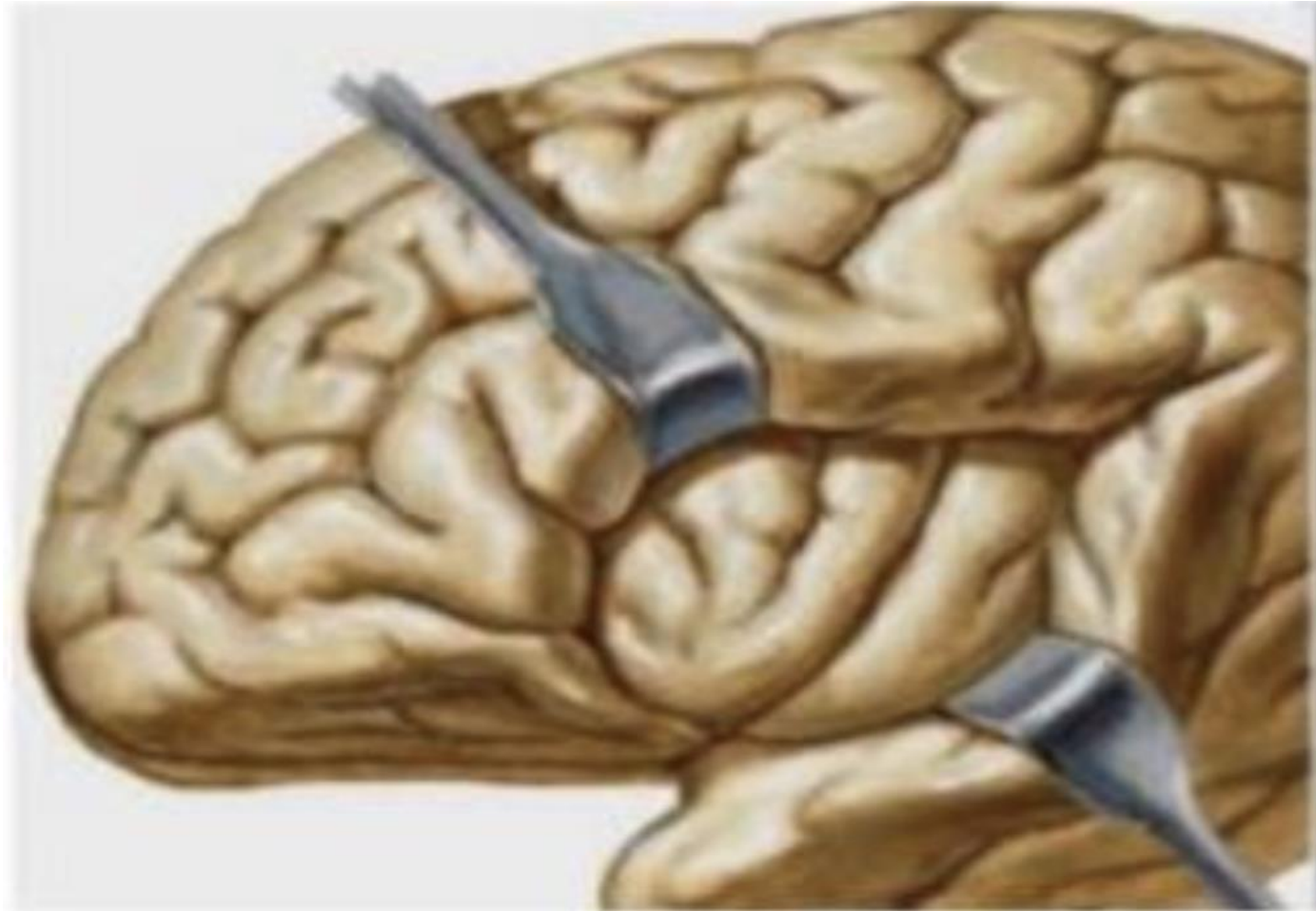
**Q21) Which of the following occurs due to destructive lesion restricted to the pointed area?**

- A) Expressive aphasia.
- B) Paralysis of the tongue.
- C) Global aphasia.
- D) Receptive aphasia.
- E) Deafness.



**Q22) The structure represents the:**

- A) Broca's area.
- B) Paracentral lobule.
- C) Insula.



# رسالة من الفريق العلمي

اللهم إن عمر عطية في ذمتك وحبل جوارك، فقه من فتنة القبر وعذاب النار،  
أنت أهل الوفاء والحق، فاغفر له وارحمه إنك أنت الغفور الرحيم.

For any feedback, scan the code or click on



Corrections from previous versions:

Versions	Slide # and Place of Error	Before Correction	After Correction
V0 → V1			
V1 → V2			