

رَبِّ اشْرَحْ لِي صَدْرِي وَيَسِّرْ لِي أَمْرِي وَاحْلُلْ عُقْدَةً مِّن لِّسَانِي يَفْقَهُوا قَوْلِي



Anatomy Lab

(1+2)

UGS-Final

Done by: Zeina Yassin

اللهم اغفر للمؤمنين والمؤمنات الأحياء منهم والأموات
فمن استغفر للمؤمنين والمؤمنات كتب الله له بكل مؤمن ومؤمنة حسنة

The University Of Jordan
Faculty Of Medicine



Male Genital system Practical

DR. AHMED SALMAN

ASSOCIATE PROFESSOR OF ANATOMY & EMBRYOLOGY

Checklist 3rd practical Male Genital system

- Scrotum and its layers
- Testis
- Epididymis (parts)
- Spermatic cord, its contents
- Vas deference
- Seminal vesicles
- Ejaculatory ducts
- Prostate
- Internal structure of the penis (root ,corpora ,bulb)
- Parts of male urethra

1.Ligamentous remnant of processus vaginalis

2.Straight tubule

3.Seminiferous tubule

4.Parietal layer of Tunica vaginalis

5.Cavity of Tunica vaginalis

6.Visceral layer of Tunica vaginalis

7.Tunica albuginea

8.Vas deferens

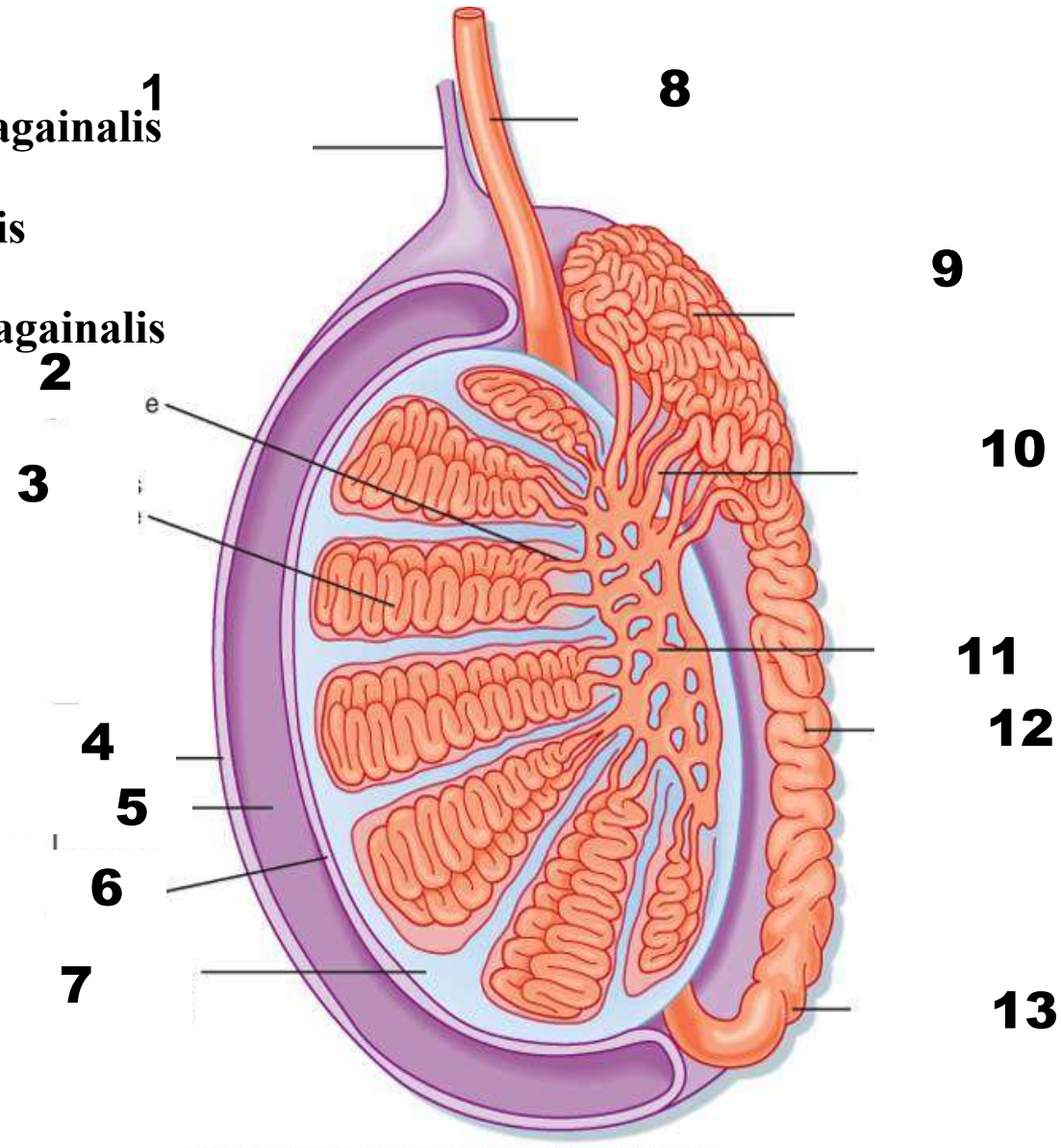
9.Head of epididymis

10.Efferent ductules

11.Rete testis

12.Body of epididymis

13.Tail of epididymis



1.Trigone of Urinary Bladder

2.Ureter

3.Seminal Vesicle

4.Rectovesical fascia

5.Ejaculatory duct

2

3

4

5

6.Membranous urethra

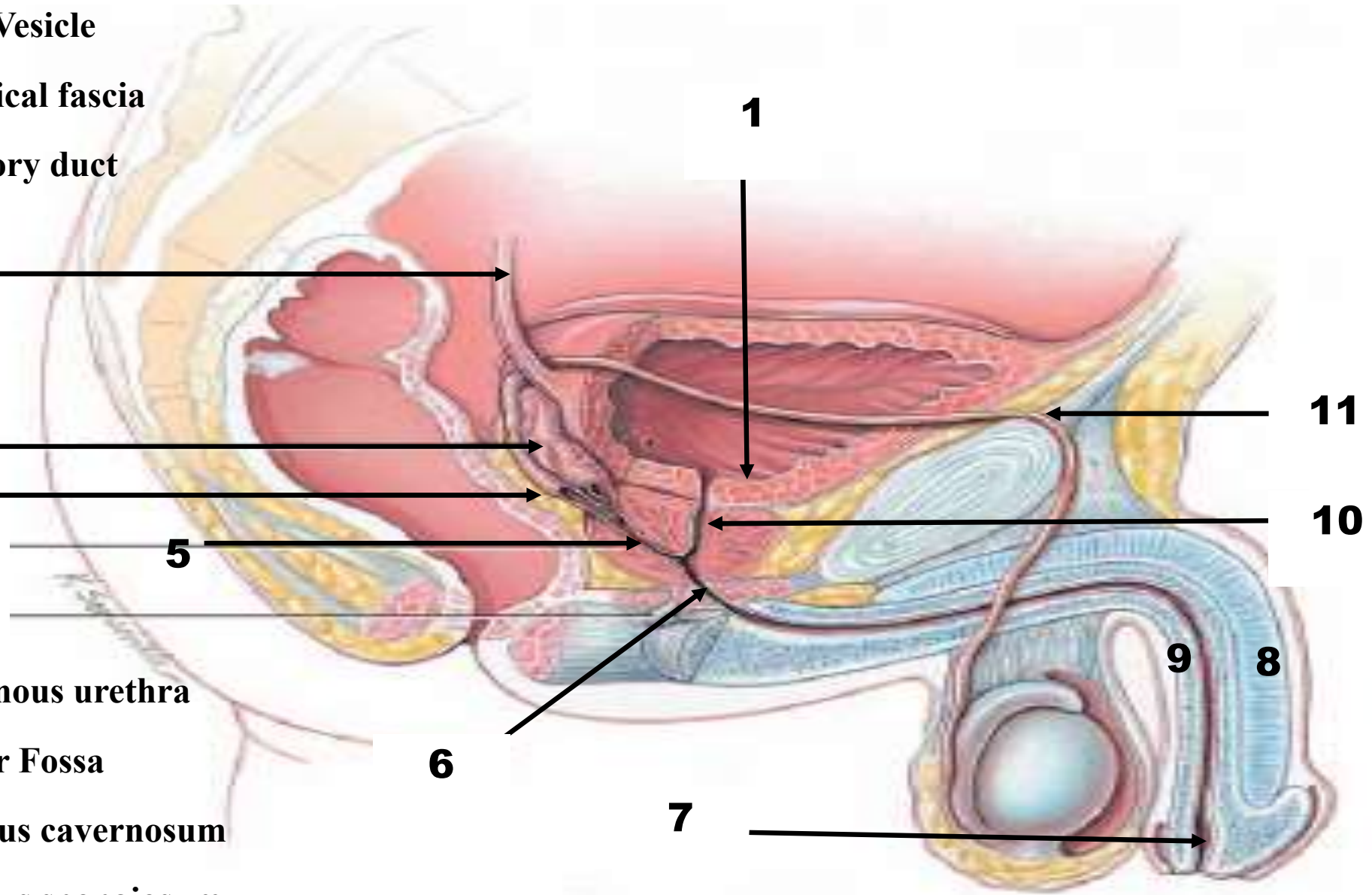
7.Navicular Fossa

8.The corpus cavernosum

9.The corpus spongiosum

10.Prostatic urethra.

11.Vas deferens



1

11

10

9

8

7

6

7. Neck of the urinary bladder

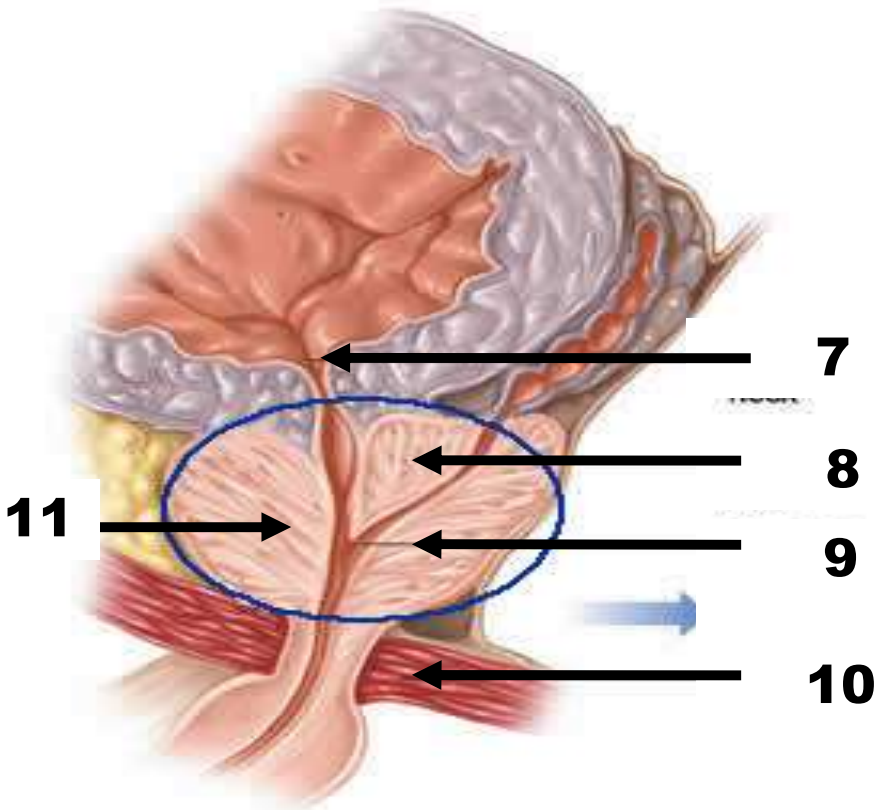
8. Median lobe of prostate

9. Posterior lobe of prostate

10. External urethral sphincter

11. Anterior lobe of prostate

Side View



1. Colliculus seminalis

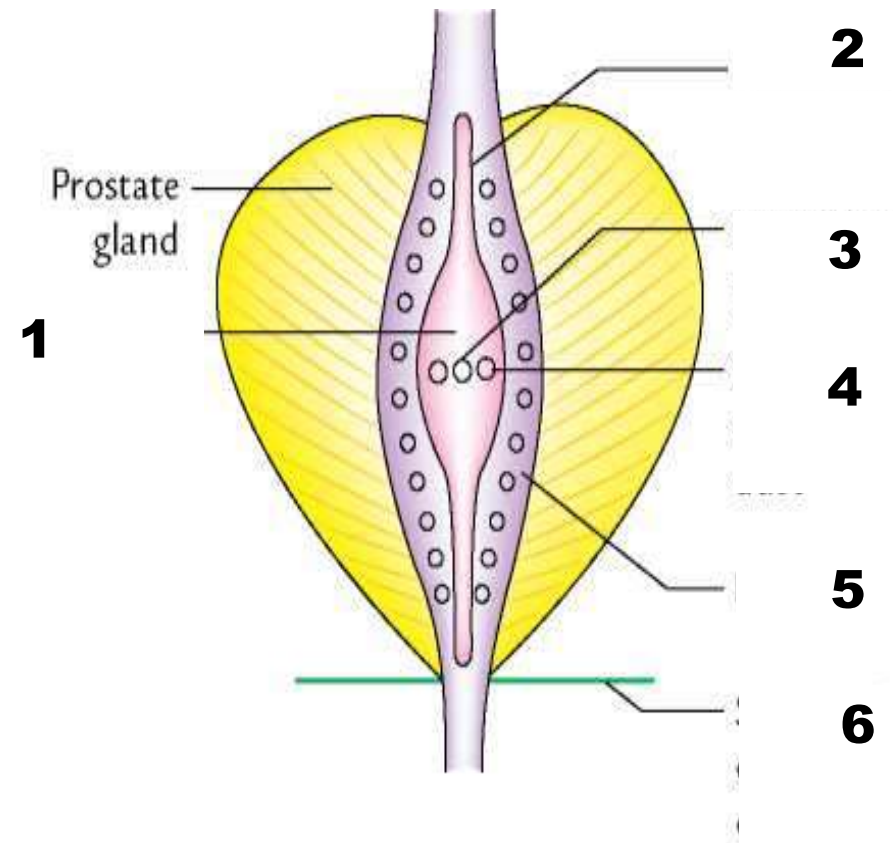
2. Urethral crest

3. Opening of prostatic utricle

4. Opening of ejaculatory duct

5. Prostatic Sinus

6. Perineal membrane



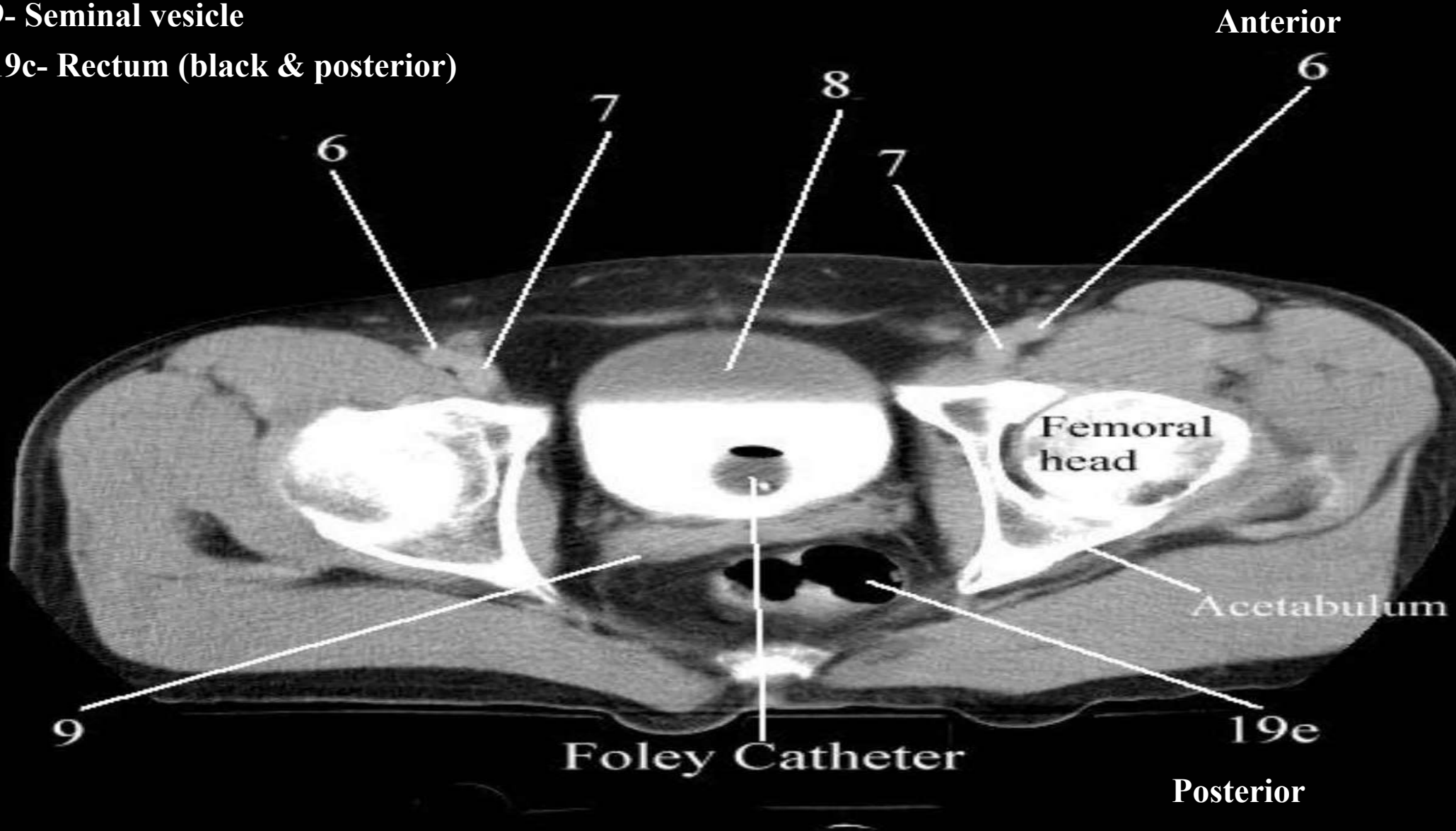
6- Femoral artery (lateral)

7- Femoral vein (medial)

8- Urinary bladder

9- Seminal vesicle

19c- Rectum (black & posterior)



Anterior

Femoral head

Acetabulum

Foley Catheter

Posterior

9

6

7

8

7

6

19e

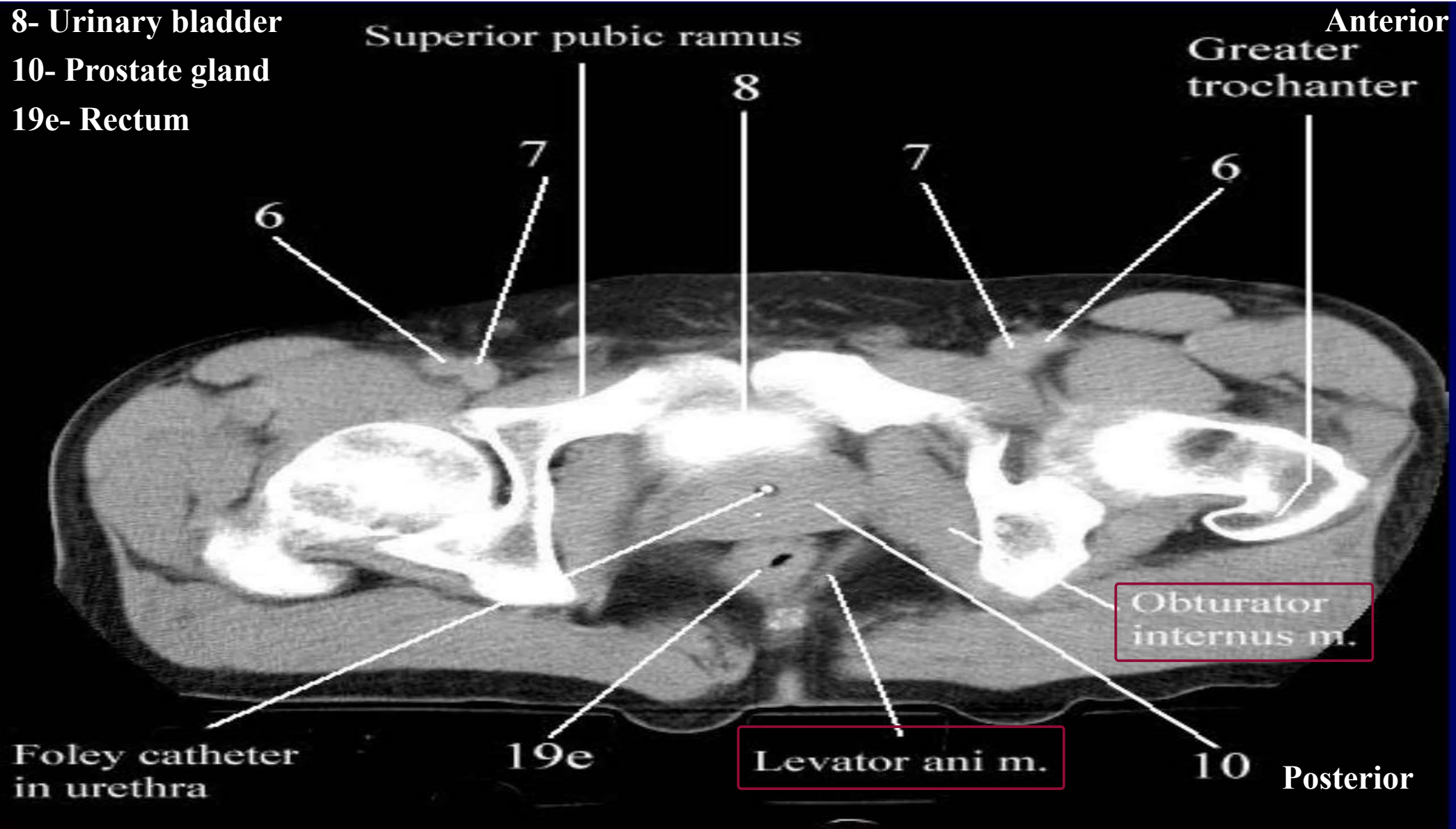
6- Femoral artery

7- Femoral vein

8- Urinary bladder

10- Prostate gland

19e- Rectum



1- Urinary bladder

2- Enlarged prostate blugs inside the bladder



Enlarged prostate → occupies a large part of the bladder

1- Femoral artery

2- Femoral vein

3- Urinary bladder

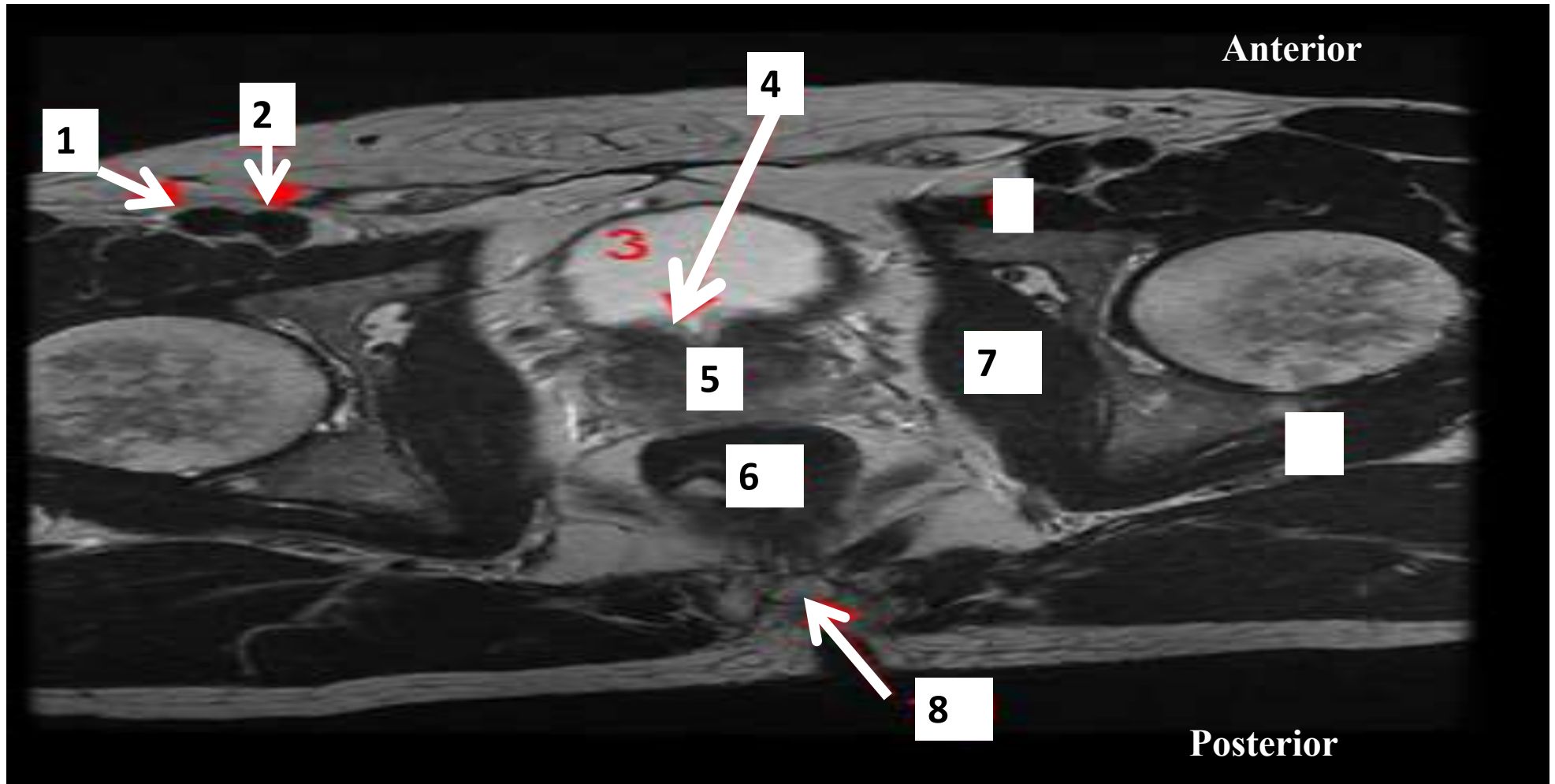
4- Neck of urinary bladder

5- Prostate gland

6- Rectum

7- Obturator internus muscle

8- Coccyx



اللهم صل وسلم وبارك على سيدنا محمد وعلى آله عدد كمال الله وكما يليق بكماله

The University Of Jordan
Faculty Of Medicine



Female Genital system and Perineum Practical

DR. AHMED SALMAN

ASSOCIATE PROFESSOR OF ANATOMY & EMBRYOLOGY

4th Practical Check list

1. Ovaries ;surfaces ,poles ,ligaments ,relation, blood supply
2. Uterus ;parts ,position, relation ,peritoneal covering ,blood supply
3. Ligament of the uterus
4. Cervix ,vagina ,vaginal fornices
5. Superficial ,deep perineal pouches ,boundaries ,contents
6. Ischiorectal fossa ; boundaries ,contents

1- Rectouterine pouch (Douglas pouch)

2- Mesovarium

3- Fimbriae

4- Infundibulum

5- Ampulla of the uterine tube

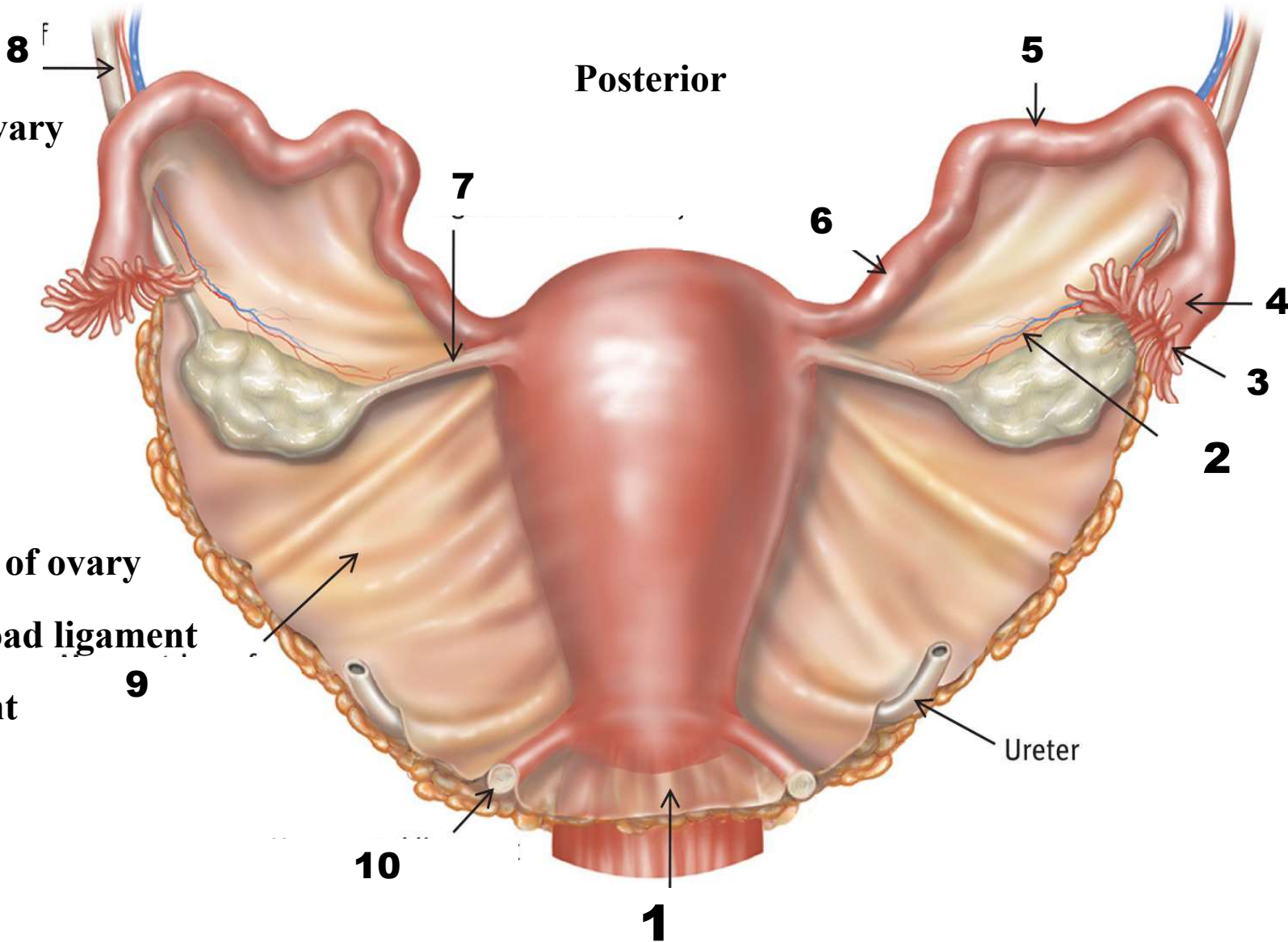
6- Isthmus

7- Round ligament of ovary

8- Suspensory ligament of ovary

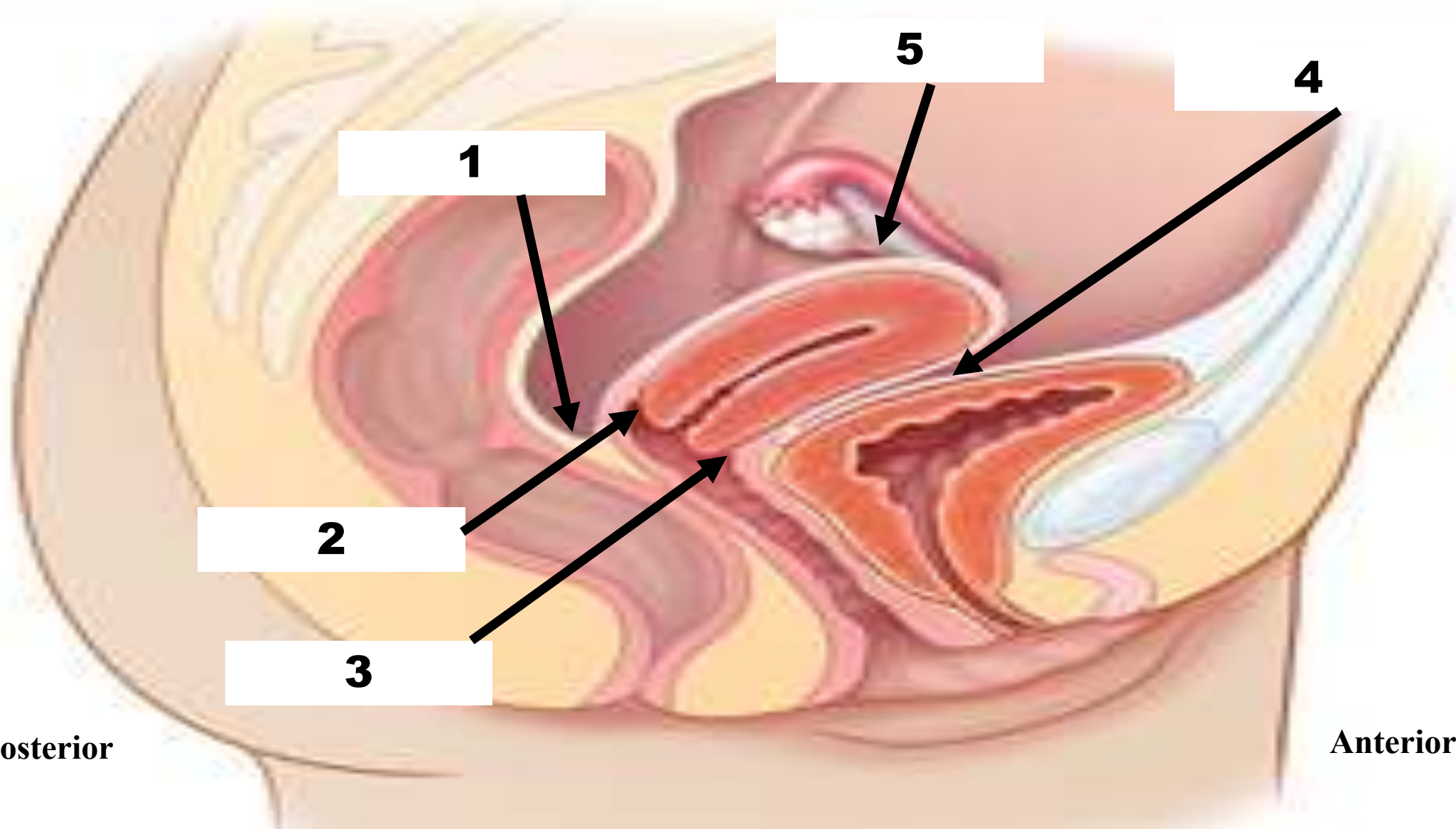
9 - Mesometrium of broad ligament

10- Uterosacral ligament



Posterior

Ureter



1- Rectouterine pouch (Douglas pouch)

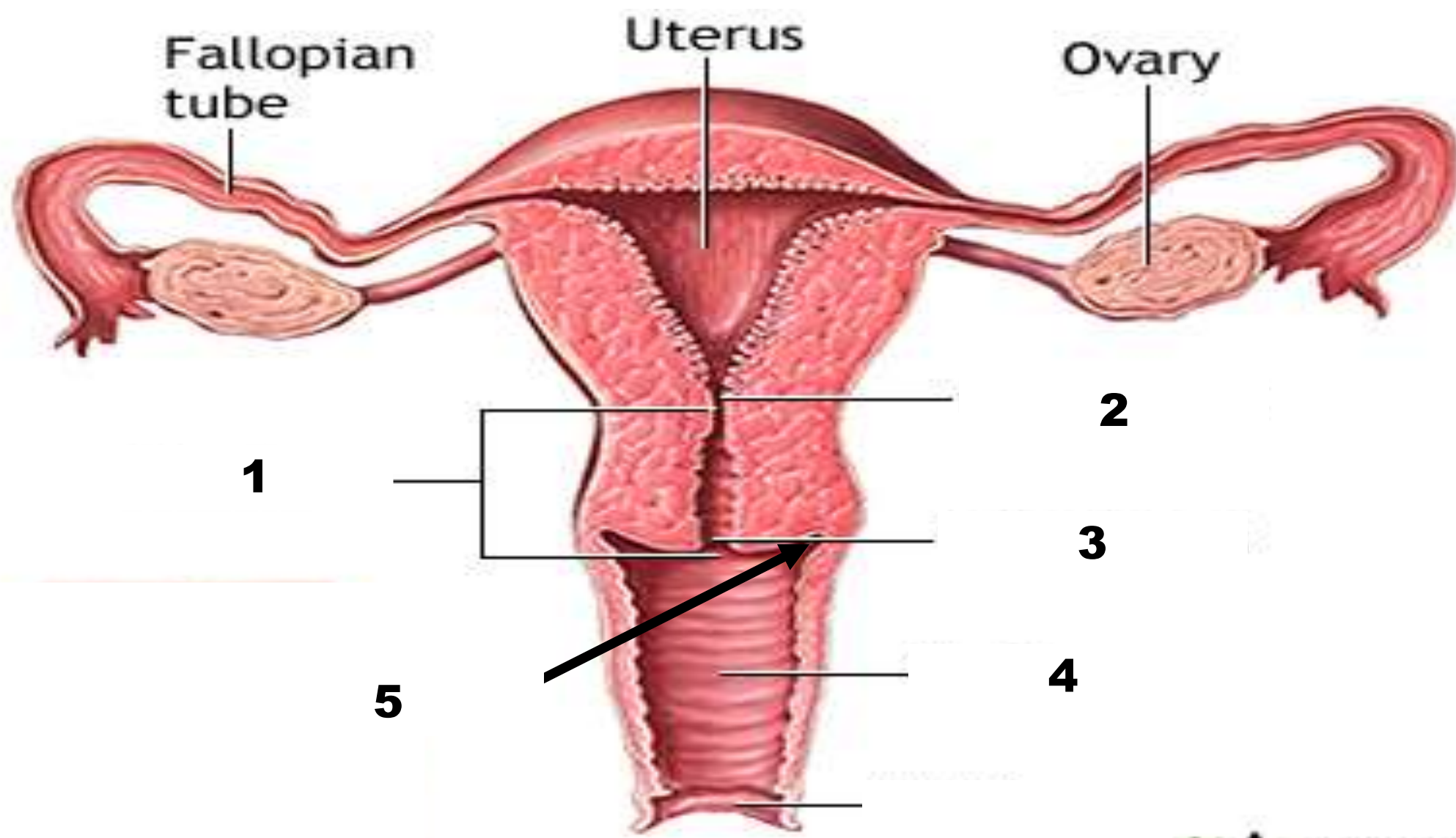
2- Posterior vaginal fornix

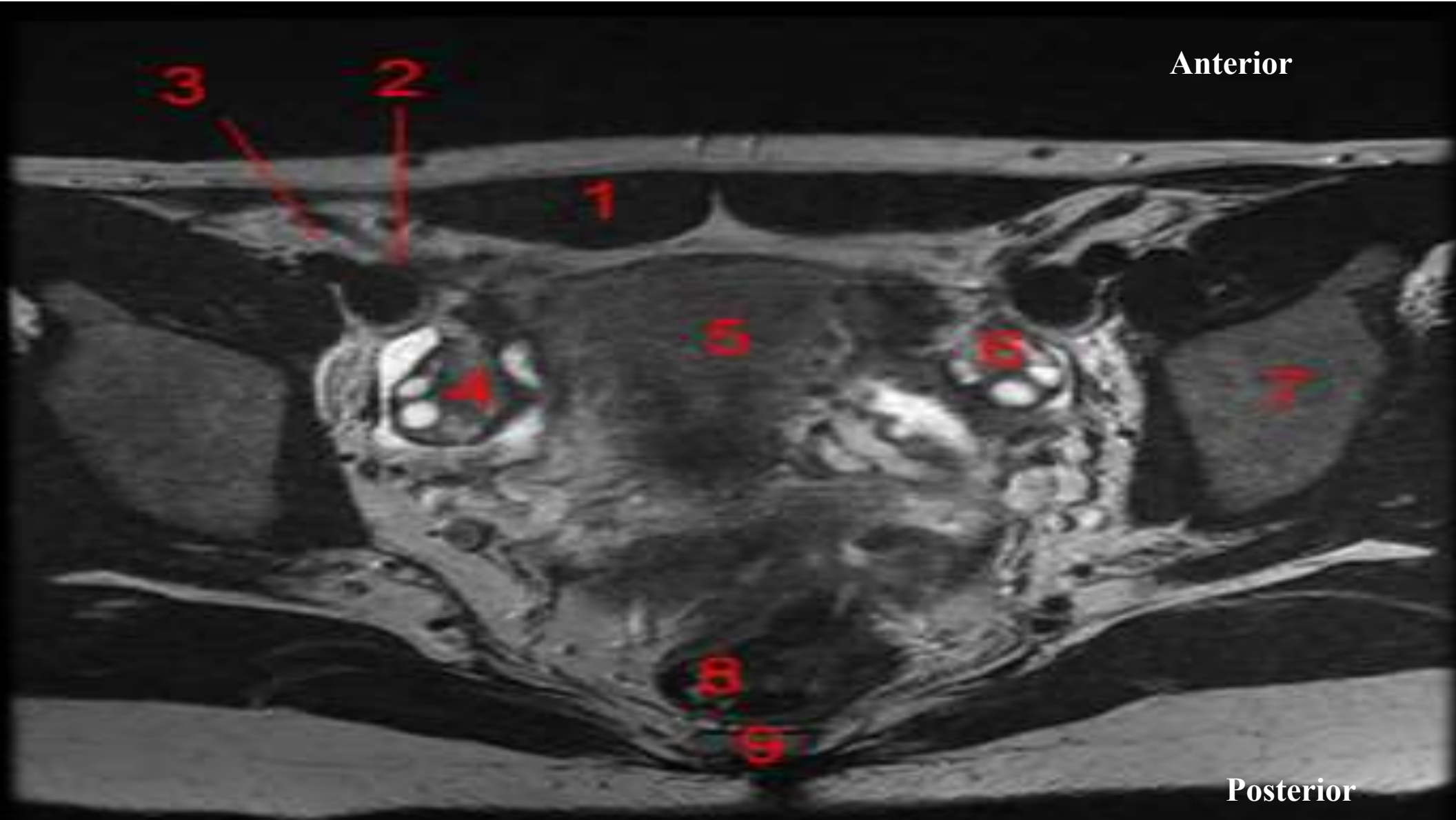
3- Anterior vaginal fornix

4- Vesicouterine pouch

5- Round ligament of ovary

- 1- Cervix
- 2- Internal os
- 3- External os
- 4- Vagina
- 5- Lateral vaginal fornix





1- Rectus abdominis muscle

2- External iliac vein

3- External iliac artery

4- Right ovary

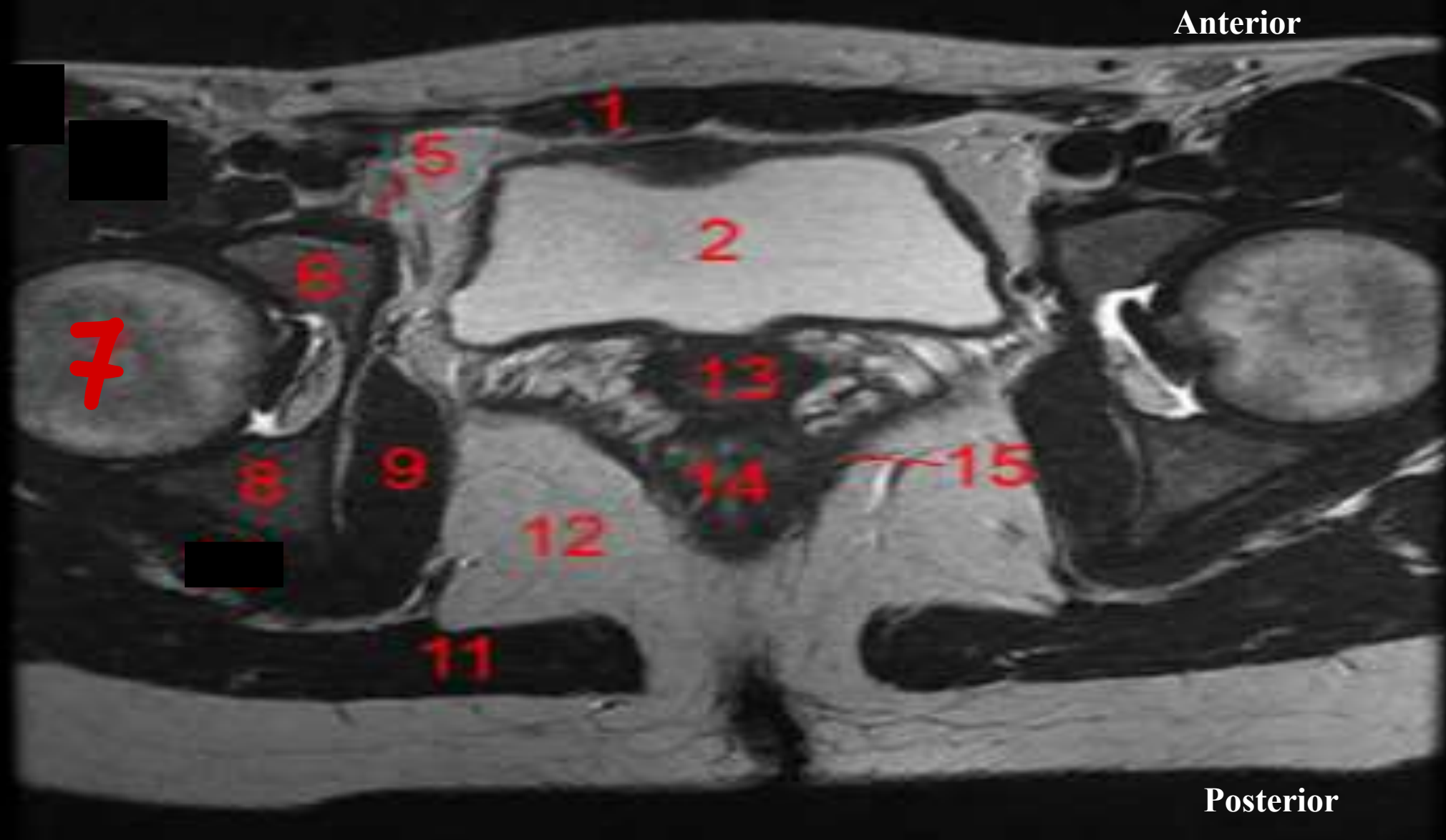
5- Uterus

6- Left ovary

7- Loop of the Ilium

8- Rectum

9- Coccyx



1- Rectus abdominis muscle

2- Urinary bladder

5- Pectineus muscle

6- Superior pubic ramus

7- Head of the femur

8- Inferior pubic ramus

9- Obturator internus muscle

11- Gluteus Maximus muscle

12- Ischioanal fossa

13- Vagina

14- Rectum

15- Levator ani muscle

1- Urogenital diaphragm:

It is formed by the sphincter urethrae and the deep transverse perineal muscles

2- Crus of the penis

covered by ischiocavernosus muscle

3- Superficial perineal pouch

4- Bulb of penis

covered by bulbospongiosus muscle

5- Urethra

6- Colles fascia

7- Deep perineal pouch

8- Lavator ani muscle

9- Obturator internus muscle

