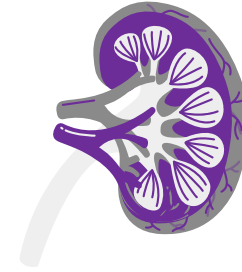


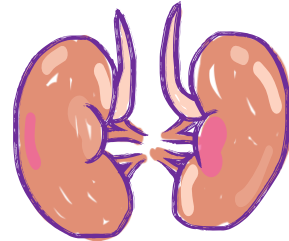
بِسْمِ اللَّهِ الرَّحْمَنِ الرَّحِيمِ



# Past paper Patho FINAL ALL Material



Written by: Ammar Abusheikha  
Ahmad Rami



﴿ قُلْ بِفَضْلِ اللَّهِ وَبِرَحْمَتِهِ ۖ فَبِذَلِكَ فَلْيَفْرَحُوا هُوَ خَيْرٌ مِّمَّا يَجْمَعُونَ ﴾

Reviewed by: Hashem Al-Jarrah

# **Lecture 1:**

# **Dr. Nisreen Material**

كل عام وأنتم بألف خير وصحة وسلامة

**Q: ONE is correct regarding human papilloma virus (HPV) associated disorders in the female genital tract:**

- A. Condyloma accuminatum is caused by HPV type 18 infection
- B. Progression from dysplasia to invasive cancer is the role in all cases
- C. Dysplasia of the lower third of cervical mucosa is equivalent to CIN3
- D. Infection and related lesions of HPV can only affect the cervix
- E. HPV type 16 leads to human cell dysplasia through viral proteins E6 and E7

# Q: regarding pap smear is correct:

- A. It helped in reducing cervical carcinoma mortality and morbidity rates
- B. Very expensive with low sensitivity and specificity
- C. Can only detect CIN I
- D. The higher the (N/C) ratio the lower the grade

**Q: The major differences between the dysplastic cells in cervical dysplasia (CIN) and the normal cervical epithelial cells include all the following except:**

- A. Nuclear contour irregularities
- B. Size of nuclei
- C. High N/C ratio (nuclear/ cytoplasmic ratio)
- D. Number of nuclei per cell
- E. Nuclear hyperchromasia

**Q: The grade of the cervical condition to involve the full thickness of epithelium is:**

- A. CIN I
- B. CIN II
- C. CIN III
- D. None of the above

**Q: Pap smear test is considered a successful medical screening test for the detection of invasive cervical cancer, yet, it is not that successful in detection of the pre-invasive lesions (CIN).**

True

False

Answer: False

**Q: The most common neoplasm of the vulva is:**

- A. Lichen sclerosis
- B. Basaloid squamous cell carcinoma
- C. Condyloma
- D. Adenocarcinoma

**Q: Which of the following is false about condyloma acuminatum?**

- A. It is not pre-cancerous
- B. It has cauliflower appearance grossly
- C. It is related to HPV type 16
- D. Koliocytosis can be seen

**Q: All of the following is true about basaloid type (poorly differentiated) squamous cell carcinoma except:**

- A. It is not HPV related
- B. It is the most common subtype
- C. Lesions can be found in vagina and cervix
- D. All of the above is true

## **Q: regarding HPV related disorders is true:**

- A. E6 and E7 proteins are responsible for the oncogenic effect of HPV
- B. condyloma accuminatum usually caused by HPV 18

# **Lecture 2:**

# **Dr. Nisreen Material**



## **Q: ONE is true about uterine diseases:**

- A. Endometrial hyperplasia is the precursor of endometrial serous carcinoma
- B. Endometritis is not a risk factor of infertility
- C. Leiomyomas are the most common benign uterine tumors
- D. Leiomyosarcomas tend to shrink following menopause
- E. The most common location of adenomyosis is the ovary

# **Q: A risk factor of endometrioid carcinoma:**

- A. Estrogen-secreting granulosa cell tumors
- B. Age
- C. Irregular sexual acts
- D. P53 gene mutation

**Q: The most common benign tumor of females is:**

- A. Endometriosis
- B. Fibroadenomas
- C. Condylomas
- D. Leiomyomas

**Q: All of the following is associated with endometriosis rather than adenomyosis except:**

- A. Ovaries are the most common location
- B. Regurgitation theory
- C. Origin from stratum basalis
- D. Chocolate cysts

**Q: Which of the following pairs is wrong :**

- A. Tubal ectopic pregnancy..... Chronic PID
- B. Severe endometriosis.... Infertility
- C. Leiomyosarcoma..... BRCA mutation

**Q: Which of the following mutations is present in serous carcinoma of endometrium?**

- A. P53
- B. PTEN
- C. BRCA1
- D. K-RAS

# **Q: All are correct regarding uterine diseases, except ONE:**

- A. Adenomyosis develops within myometrial muscle layers.
- B. Endometriosis is considered a risk factor for infertility.
- C. Uterine leiomyoma frequently transforms into sarcoma.
- D. Endometrial hyperplasia is linked to excess estrogen.
- E. Septic abortion may be followed by acute endometritis.

**Q: Which of the following has the highest risk to develop endometrial carcinoma?**

. atypical hyperplasia

Answer:

# **Q: one of the following regarding endometrial cancer is true:**

. endometrioid carcinoma is frequently associated with a mutation in DNA mismatch repair genes



# Lecture 3:

# Dr. Nisreen Material

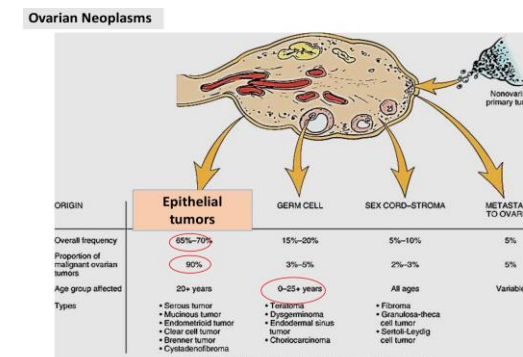


# Q: ONE is true about ovarian tumors:

- A. Mature cystic teratoma may contain bone and cartilage
- B. Malignant mucinous tumors outnumber the benign mucinous tumors
- C. Psammoma bodies are seen exclusively in borderline serous ovarian tumors
- D. Ascites associated with ovarian mass is always diagnostic of a malignancy
- E. Malignant serous tumors contain mucin secreting cells.

# Q: All are correct about ovarian neoplastic diseases, except ONE:

- A. Mucinous tumors belong to the category of surface epithelial tumors
- B. Germ cell tumors are most frequent in women >50 years old
- C. Sex cord stromal tumors are less frequent than surface epithelial tumors
- D. Teratoma belongs to the category of germ cell tumors
- E. Surface epithelial tumors represents the highest proportion of malignant ovarian tumors



Answer: B

# **Q: Which of the following is false regarding female genital tract tumors?**

- A. Intraepithelial neoplasia has the same morphology in different locations
- B. Some malignant tumors can be caused by viral infections
- C. Tumors derived from germ cells are always malignant
- D. Ovarian neoplasms are the 5th most common neoplasms in females.

**Q: The most common ovarian malignant diseases are derived from:**

- A. Surface epithelial cells
- B. Stromal cells
- C. Germ cells
- D. Metastasis from other tissues

# **Q: All of the following is true about mucinous ovarian tumors except:**

- A. They have psammoma bodies
- B. They are mucin secreting
- C. Most of them are benign
- D. They are characterized with blue cytoplasm

# Q: All are correct regarding tumors of the ovary, except ONE:

- A. Mature cystic teratomas may contain brain tissue
- B. Endometrioid tumors resemble their endometrial counterpart
- C. Serous ovarian tumors may contain Psammoma bodies
- D. Mucinous ovarian tumors tend to be large in size
- E. Metastatic tumors to ovary outnumber primary tumors

**Q: All of the following is true about BRCA gene except:**

- A. It is present in hereditary ovarian cancer
- B. It is present in hereditary fallopian cancer
- C. It is present in leiomyosarcoma

**Q: all the following are considered as non-neoplastic lower female genital tract disorders except:**

- A. Lichen sclerosus
- B. Condyloma acuminatum
- C. Lichen simplex chronicus
- D. Serous ovarian Cystadenoma
- E. Endometrial hyperplasia

While endometrial hyperplasia is technically an upper genital tract disorder, the serous ovarian cystadenoma is the only neoplasm listed

**Answer: D**

**Q: Which of the following statements regarding surface epithelial tumors is true?**

- A. Low grade serous carcinoma associated with KRAS mutation
- B. Mucinous tumors usually contain thin clear serous fluid
- C. Metastatic cancers contain psammoma bodies

**Lecture 4**  
**Dr Nisreen Material**

# Q: ONE is true about hydatidiform mole:

- A. Serum hCG is higher in partial moles than in complete moles
- B. Complete moles have a lower risk for development of choriocarcinoma
- C. Partial mole's most classic karyotype is 46, XX
- D. Complete mole has a diploid karyotype that is entirely paternal
- E. Partial mole never contains fetal parts

Feature	Complete Mole	Partial Mole
Karyotype	46,XX (46,XY)	Triploid (69,XXY)
Villous edema	All villi	Some villi
Trophoblast proliferation	Diffuse; circumferential	Focal; slight
Atypia	Often present	Absent
Serum hCG	Elevated	Less elevated
hCG in tissue	++++	+
Behavior	2% choriocarcinoma	Rare choriocarcinoma

Answer: D

**Q: In comparison to normal pregnancy, complete hydatidiform mole is different in all of the following except ONE:**

- A. Does not support the growth of a fetus
- B. The number of chromosomes per cell
- C. Contains only paternal chromatin
- D. Absence of fetal parts
- E. Diffuse trophoblastic proliferation

**Q: All of the following are associated with complete moles and not partial moles except:**

- A. Diploid 46, XX
- B. Diploid 46, XY
- C. Fetal parts are never found
- D. Triploid 69, XXY
- E. Entirely paternal genetic material

# Q: Which of the following statements is true?

- A. Cervical carcinoma is the most frequent cancer in women
- B. Choriocarcinoma is chemosensitive, so it can be treated with chemotherapy
- C. Non-invasive intraepithelial neoplasia is treated with surgery
- D. Mild dysplasia is confined to the epithelium and equivalent to carcinoma in situ
- E. Complete mole is usually triploid

**Q: ONE is a correct description of the trophoblastic condition that carries the karyotype 69, XXY:**

- A. A neoplasm composed of syncytiotrophoblasts and cytotrophoblasts
- B. All genetic makeup of cells is coming from paternal origin
- C. An abnormal gestation containing both maternal and paternal DNA
- D. A type of tumor with large epithelioid trophoblastic cells
- E. A type of gestation that arises from implantation within fallopian tubes

## Q: Regarding the karyotype 69, XXY is true:

- A. Trophoblastic proliferation is slight and focal in some villi
- B. The genetic material is exclusively paternal
- C. Never contains fetal parts
- D. It is the classic karyotype of complete mole
- E. It is diploid

# Q: ONE is true about hydatidiform mole:

- A. Serum hCG is higher in partial moles than in complete moles
- B. Complete moles have a lower risk for development of choriocarcinoma
- C. Partial mole's most classic karyotype is 46, XX
- D. Complete mole has a diploid karyotype that is entirely paternal
- E. Partial mole never contains fetal parts

# **Lecture 5**

## **Dr Maram Material**

# Q: ONE is true about breast diseases:

- A. Gynecomastia is a frequent breast symptom in female
- B. Breast diseases are classically diagnosed in young adult female
- C. Ductal carcinoma in situ is defined as tumor invading the surrounding tissue
- D. Fibrocystic diseases of the breast are associated with moderate fourfold increased risk of breast cancer development
- E. The average size of breast cancers to be detected by mammography is 5 cm.

**Q: All of the following have minimal or no increased risk of breast cancer except:**

- A. Fibrocystic changes
- B. Atypical hyperplasia
- C. Typical hyperplasia
- D. Papillomas
- E. Simple cysts

# Q: ONE is true regarding breast diseases:

- A. Average size of breast cancers to be detectable by mammogram is 3 cm
- B. Ductal carcinoma in situ means tumor invading lymphatic ducts
- C. Fibrocystic diseases are associated with high risk for breast cancer
- D. Gynecomastia is a breast symptom exclusively seen in male patients
- E. Fibroadenomas are classically diagnosed in post-menopausal females

## **Q: One of the following is correct regarding symptoms of breast cancer:**

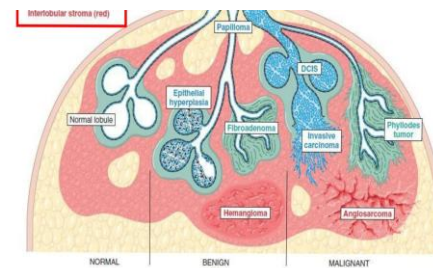
- A. Palpable mass is the most common presentation among breast cancer patients
- B. A 1 cm mass does not need evaluation
- C. Most patients are symptomatic
- D. Inflammation usually mimics inflammatory breast cancer
- E. Nipple discharge is always malignant

The answer key was originally C, which is clearly incorrect. We were stuck between A and D, but chose A as it is definitely true. D might be incorrect cuz Inflammatory breast cancer mimics inflammation of the breast, not the other way around.

**Answer: A**

# Q: One of the following regarding stromal neoplasms is correct:

- A. Borderline phyllodes tumors do not metastasize
- B. Angiosarcoma is one of tumors arising from the intralobular stroma
- C. Fibroadenoma usually occurs in reproductive age
- D. Fibroadenoma usually occurs after menopause
- E. Phyllodes tumor is always benign



Answer: C

**Q: Most breast cancer patients have symptoms:**

- A. True
- B. False

Answer: B

**Q: Regarding stromal tumors, one of the following statements is correct:**

- A. The presence of multiple fibroadenomas is a sign of malignancy
- B. Phyllodes tumors are all benign
- C. Fibroadenomas affect reproductive age patients
- D. Fibroadenomas are mostly adherent to adjacent breast tissues
- E. Fibroadenomas commonly metastasize

## Q: ONE is true about breast cancer subtypes:

- A. Invasive lobular carcinoma is the most common variant
- B. Carcinoma with medullary features is usually ER positive
- C. Invasive ductal carcinoma is always triple negative
- D. Colloid carcinoma contains abundant extracellular mucin
- E. Tubular carcinoma reveals lymph node metastasis in most cases.

Another name for mucinous carcinoma is  
Colloid carcinoma

Answer:D

**Q: All of the following are true regarding breast tumors except:**

- A. Invasive lobular carcinoma is mostly bilateral
- B. In situ carcinomas are confined by the basement membrane
- C. Comedo subtype is frequently associated with calcifications
- D. Invasive carcinomas usually express hormone receptors ER, PR
- E. DCIS does not invade the surrounding stroma

**Q: One of the following is not considered as a risk factor for breast cancer:**

- A. Multiparity
- B. 5-year-old child exposed to chest radiation
- C. Postmenopausal obesity
- D. European descent
- E. Increasing age

# Q: ONE is true about breast diseases:

- A. Gynecomastia is a frequent breast symptom in female
- B. Breast diseases are mostly benign
- C. Ductal carcinoma in situ is defined as tumor invading the surrounding tissues
- D. Fibrocystic diseases of the breast are associated with moderate fourfold increased risk of breast cancer development
- E. Most breast diseases are malignant

# Q: Which of the following is correct:

- A. Average size of breast cancers to be detectable by mammogram is 3 cm
- B. Tubular carcinoma has a good prognosis
- C. Fibrocystic diseases are associated with high risk for breast cancer
- D. Fibroadenomas are classically diagnosed in post-menopausal females
- E. DCIS is defined by invasion through the basement membrane

**Q: Which of the following is characteristic of invasive lobular carcinoma:**

- A. High mitotic index
- B. Single-file pattern of cells
- C. Formation of glandular structures
- D. Central necrosis
- E. Abundant extracellular mucin

**Q: Which of the following is a benign lesion of the breast:**

- A. Invasive ductal carcinoma
- B. Complex sclerosing lesion without atypia
- C. Ductal carcinoma in situ
- D. Lobular carcinoma in situ
- E. Invasive lobular carcinoma

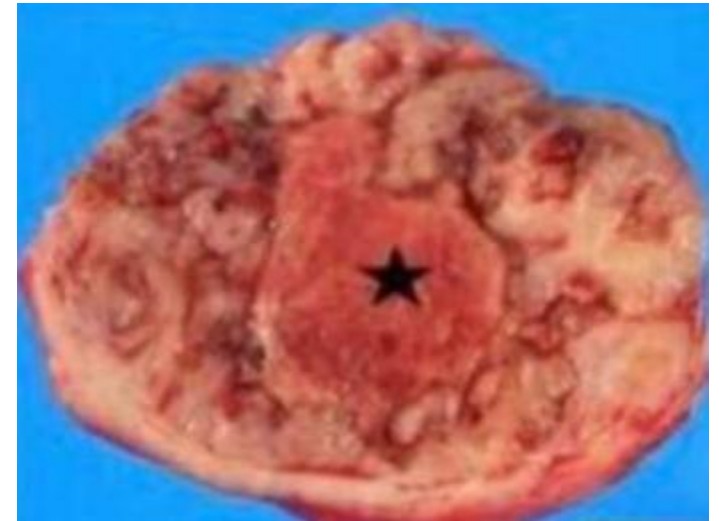
# Lab

My last file : (  
Ts genuinely so sad



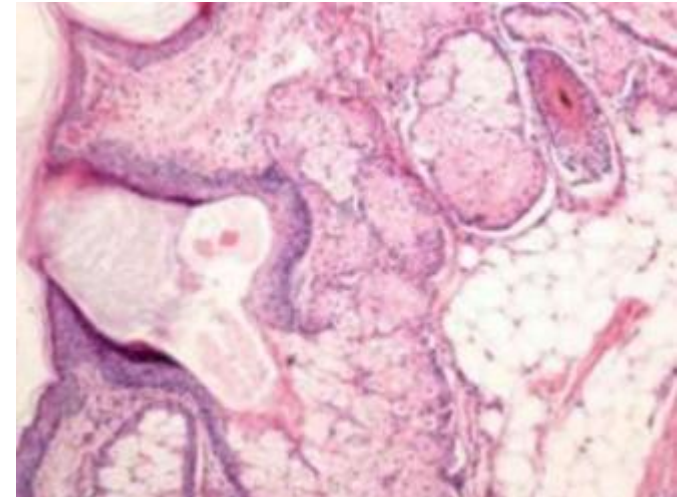
**Q1:ONE is correct regarding this mass identified in the uterus of a 64-year-old female:**

- A. An extremely frequent neoplasm in women
- B. Associated with endometrial hyperplasia
- C. Usually shows ill-defined infiltrative borders
- D. Has a genetic background of BRCA mutations
- E. Usually goes without producing symptoms



**Q2: The condition shown in the following section is called:**

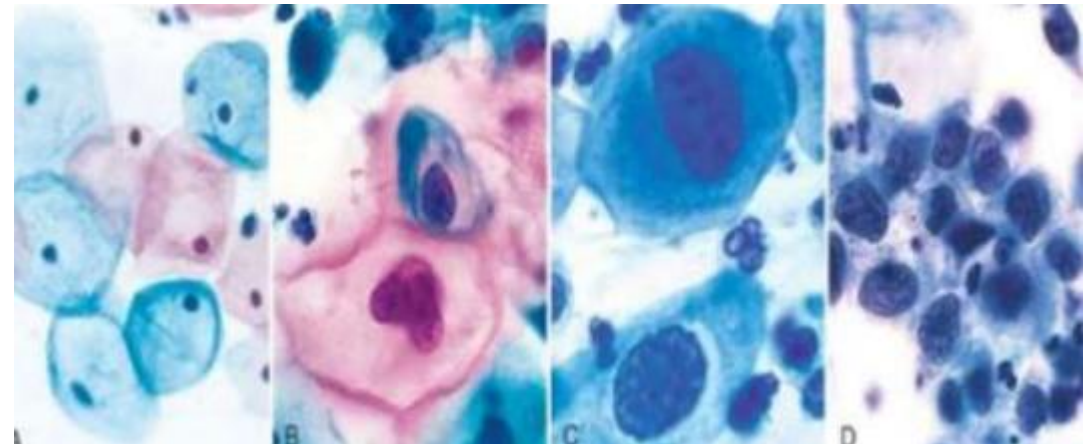
- A. Serous borderline tumor
- B. Teratoma
- C. Invasive ductal carcinoma
- D. Invasive lobular carcinoma
- E. Complete mole



Answer: B

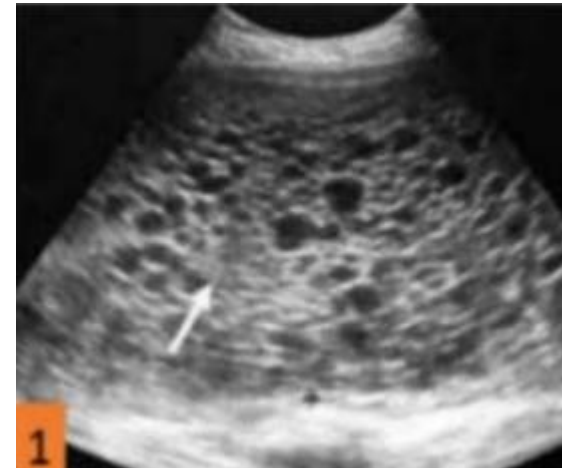
**Q3:ONE is correct regarding the changes seen in microscopic pictures of squamous epithelial cells from four different cervical smear screening tests:**

- A. Picture A is equivalent to a diagnosis of CIN 1
- B. Pictures B, C, and D show invasive squamous cell carcinoma
- C. Picture B shows higher nuclear/cytoplasmic ratio than picture D
- D. The changes seen in picture D are related to HPV types 6 and 11
- E. Picture C is equivalent to a diagnosis of CIN 2



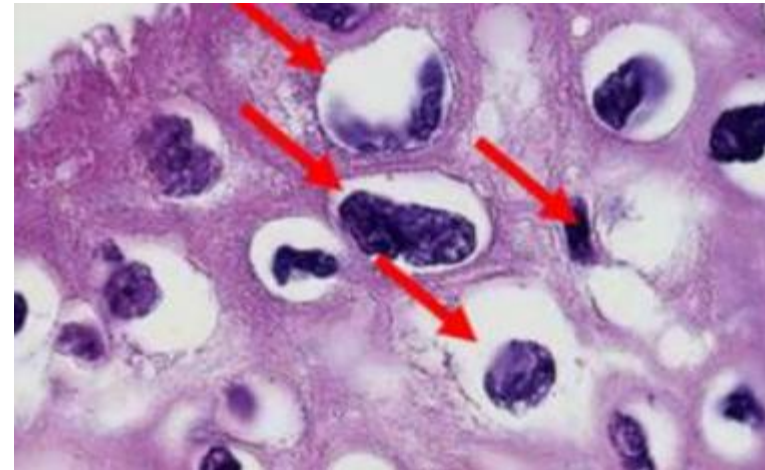
**Q4:A 36-year-old lady went to a gynecology clinic for antenatal care after testing positive with urine pregnancy test. The gynecologist did an ultrasound scan and found the shown picture. Which of the following best describes this case?**

- A. Ectopic pregnancy in the fallopian tube
- B. Partial molar pregnancy
- C. Complete molar pregnancy
- D. A fetus with trisomy 21
- E. Koilocytes



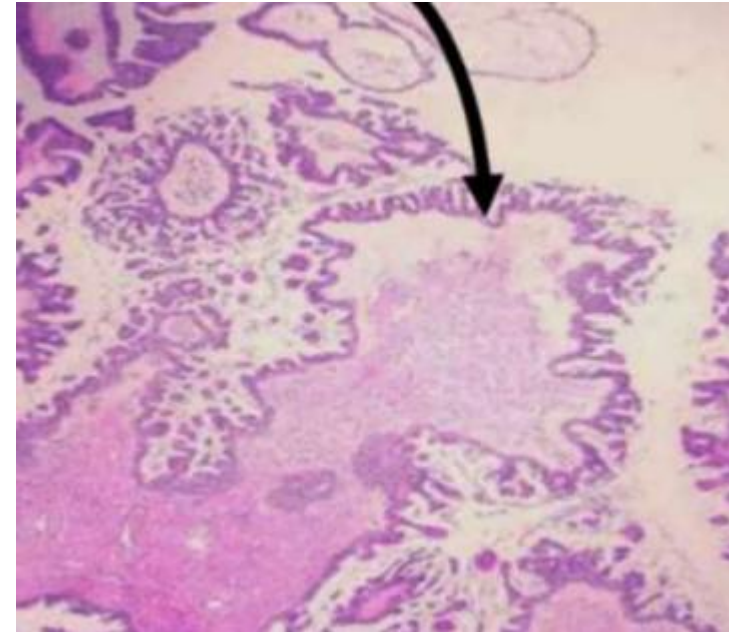
**Q5: A disease that has viral-induced cytologic changes called koilocytes:**

- A. Condyloma acuminatum
- B. Complete mole
- C. Serous borderline tumor
- D. Invasive ductal carcinoma
- E. Leiomyosarcoma



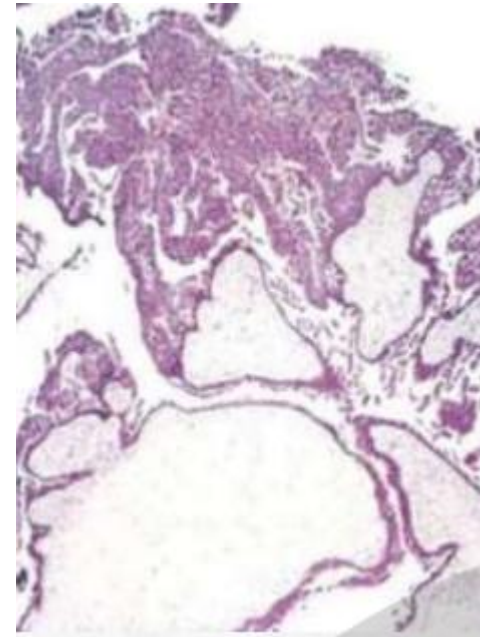
## Q6: A tumor with complex papillae:

- A. Serous borderline tumor
- B. Teratoma
- C. Complete mole
- D. Invasive lobular carcinoma
- E. Condyloma acuminatum



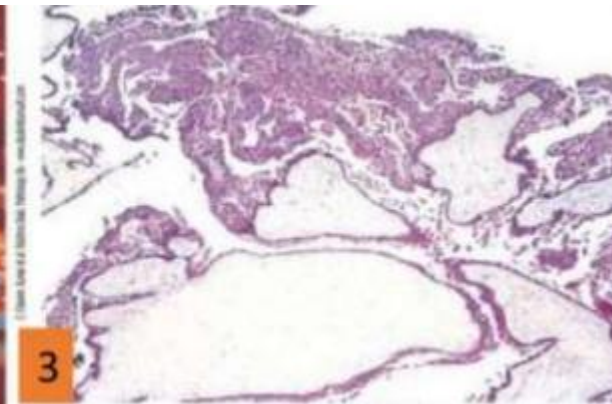
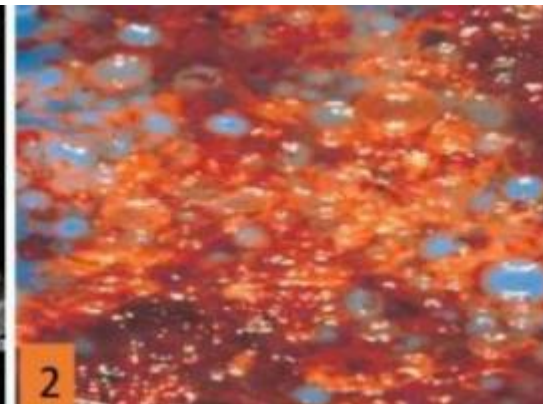
**Q7:A patient who had positive pregnancy test came to your clinic. Examination shows vesicle structures with abnormally swollen chorionic villi and no fetus. What is your diagnosis?**

- A. Teratoma
- B. Partial mole
- C. Choriocarcinoma
- D. Ectopic pregnancy
- E. Complete mole



**Q8: The following picture represents a case of a woman complaining of abdominal pain with no fetal parts:**

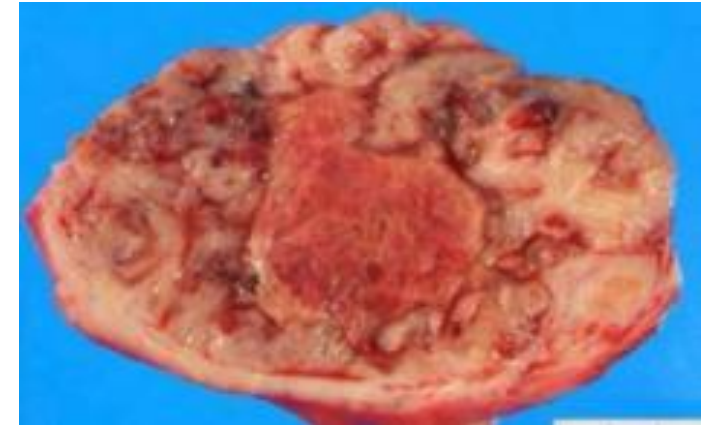
- A. Complete mole
- B. Partial mole
- C. Choriocarcinoma
- D. Serous borderline tumor
- E. Condyloma acuminatum



Answer: A

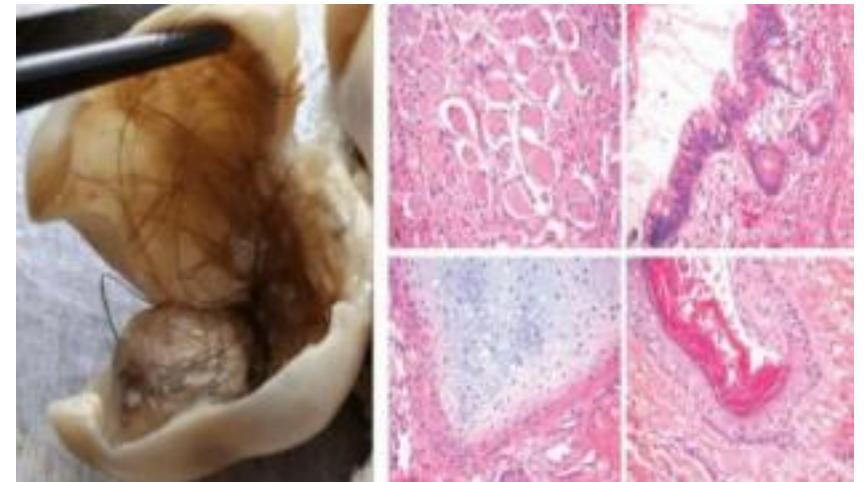
**Q9: A 57-year-old lady presented to GYN clinic complaining of postmenopausal bleeding and underwent hysterectomy. Cut section of the enlarged uterus showed this lesion. What is the likely diagnosis?**

- A. Leiomyoma
- B. Leiomyosarcoma
- C. Complete molar pregnancy
- D. Serous borderline tumor
- E. Mature cystic teratoma



**Q9:A 20-year-old female presented with vague left pelvic pain. Pelvic exam revealed a large adnexal mass. Ultrasound showed a large, heterogeneous, cystic mass replacing much of the left ovary. The contents of the cystic mass included hair, sebaceous material, and a tooth. What is your diagnosis?**

- A. Condyloma accuminatum
- B. Leiomyosarcoma
- C. Mature cystic teratoma
- D. Uterine leiomyoma
- E. Serous cystadenocarcinoma



# Scan the QR code or click it for FEEDBACK



Corrections from previous versions:

Versions	Slide # and Place of Error	Before Correction	After Correction
V0 → V1			
V1 → V2			