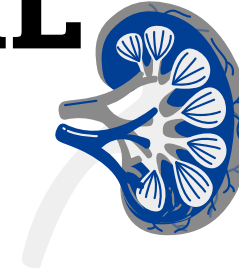


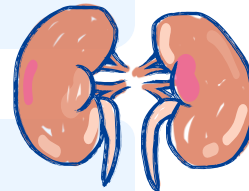
بِسْمِ اللَّهِ الرَّحْمَنِ الرَّحِيمِ



Past paper FINAL ALL Material



Written by: Ehab Alarakza
Osama Hamdan



Reviewed by: Laith Alhuniti

﴿ قُلْ بِفَضْلِ اللَّهِ وَبِرَحْمَتِهِ ۚ فَبِذَلِكَ فَلْيَفْرَحُوا هُوَ خَيْرٌ مِّمَّا يَجْمَعُونَ ﴾

Past papers

Lecture 1-2

Female genital system

Q1: Choose the **WRONG** statement:

- A.** Round ligament of the ovary is attached to the ovary's upper pole
- B.** The posterior vaginal fornix is covered with peritoneum
- C.** The lateral surface of the ovary is related to obturator nerve
- D.** The upper part of the lateral vaginal surfaces is related to ureter
- E.** Supravaginal cervix is related laterally to the uterine artery crossed by the ureter

Q2: Which of the following ligaments is attached to the body of uterus?

- A.** Pubocervical ligaments
- B.** Transverse cervical ligaments
- C.** Broad ligament
- D.** Uterosacral ligaments
- E.** More than one of the above

Q3: Which of the following is false about the broad ligament?

- A.** The uterine tube in the upper free border
- B.** The lower attached border rests on the levator ani
- C.** It's spasm during pregnancy causes pain that increases with coughing
- D.** The lateral 1/5 of the medial border represents the suspensory ligament of the ovary
- E.** None of the above

Q4: The lower inch of the vagina is supplied by:

- A.** Pudendal nerve
- B.** Genitofemoral nerve
- C.** Pelvic splanchnic nerve
- D.** Superior hypogastric plexus
- E.** Inferior hypogastric plexus

Q5: Choose the **WRONG** statement:

- A.** The fundus of uterus is drained by lateral aortic lymph nodes
- B.** Round ligament of the uterus and the Uterosacral ligament are maintaining the uterus anteversion
- C.** The lower part of lateral wall of the vagina is related to superficial transverse perineal muscle
- D.** The lower inch of the vagina is supplied by pudendal nerve
- E.** Suspensory ligament of the ovary extends between the superior end of the ovary and side wall of the pelvis

Q6: All the following structures prevent uterine prolapse, EXCEPT ONE:

- A.** Levator ani and coccygeus muscles
- B.** Round ligament of the uterus
- C.** Mesometrium
- D.** Perineal body

Q7: Ligaments attached to cervix of uterus except:

- A.** Pubocervical ligaments
- B.** Transverse cervical ligaments
- C.** Uterosacral ligaments
- D.** Round ligament

Q8: Lymphatic drainage of utero-tubal junction:

- A.** Superficial inguinal lymph nodes
- B.** External iliac lymph nodes
- C.** Lateral aortic lymph nodes
- D.** Sacral lymph nodes
- E.** Internal iliac lymph nodes

Q9: All about the uterus is correct except:

- A.** Pear-shaped muscular organ situated in the lesser pelvis between the urinary bladder and rectum.
- B.** The uterus is anteverted, anteflexed
- C.** Anterior Inferior to the uterotubal junction it is attached to round ligament of uterus
- D.** Posterosuperior to the uterotubal junction, it is attached to the round ligament of the uterus.

Q10: Which ligament extends laterally from the cervix and upper part of the vagina to the side walls of the pelvis?

- A.** Uterosacral ligament
- B.** Pubocervical ligaments
- C.** Mackenrodt's ligaments
- D.** Transverse cervical ligaments
- E.** Two of the above

Q11: Uterine carcinoma can reach labia majora through:

- A.** lymphatics around round ligament of uterus
- B.** lymphatics around round ligament of the ovary
- C.** lymphatics around broad ligament
- D.** superficial inguinal lymphatics

Q12: One of the following is wrong about vagina:

- A.** Perineal body separates it from rectum
- B.** The posterior upper $\frac{1}{4}$ is covered with peritoneum
- C.** Lined with stratified squamous epithelium
- D.** Posterior to it there is the base of the bladder

Q13: The uterine tube is related to ----- of the ovary.

- A.** Lateral surface
- B.** Posterior border
- C.** Lower pole
- D.** Anterior border

Q14: Culdocentesis is done by the passage of a needle through?

- A.** Anterior vaginal fornix
- B.** Posterior vaginal fornix
- C.** Supravaginal cervix
- D.** Lateral vaginal fornix

Q15: The round ligament of the ovary is attached to the _____ aspect of the uterotubal junction.

- A.** Posterior superior
- B.** Anterior inferior
- C.** Posterior inferior
- D.** Anterior superior

Q16: Supravaginal part of the cervix is related anteriorly to:

- A.** Uterus
- B.** Urinary bladder
- C.** Urethra
- D.** Rectum

Q17: Which of the following is covered with peritoneum?

- A.** Anterior vaginal fornix
- B.** Lateral vaginal fornix
- C.** Posterior vaginal fornix
- D.** Anterior vaginal wall

Q18: During per rectal examination in females which of following structures can't be felt:

- A.** Cervix
- B.** Sacrum
- C.** Coccyx
- D.** Urinary bladder
- E.** Vagina

Q19: Compression of the gravid uterus on ____ vein leads to hemorrhoids

- A.** Internal iliac
- B.** External iliac
- C.** Inferior mesenteric
- D.** Superior vena cava
- E.** Superior mesenteric

Q20: All of the following is true except:

- A.** Pubocervical ligament extend anteriorly from the cervix of the uterus to the pubis
- B.** Transverse cervical ligament extend laterally from the cervix and upper part of the vagina to the side wall of the pelvis
- C.** Uterosacral ligament extend backwards from the posterolateral aspect of the cervix and lateral part of vaginal fornices to the front of S2 and S3
- D.** The antiflexion angle is maintained by the round ligament of the uterine fundus and the backward pull of the uterosacral ligament of the cervix
- E.** The lower attached border of the broad ligament is related to the pelvic floor

Q21: The crossing between ureter and uterine artery occurs at the level of:

- A.** lateral to the supravaginal cervix
- B.** Posterior to the lateral vaginal fornix
- C.** Posterior to uterus

Q22: Anteversion is the right angle between the uterus and the vagina?

A. True

B. False

Answer: B; cervix and vagina

Q23: Most common site of ectopic pregnancy?

Answer: Fallopian Tube

Q24: True about uterine artery:

Answer: Tortuous in the broad ligament

Q25: Choose the **WRONG** match of the following combinations:

- A.** Lymphatic drainage of the ovary — external iliac
- B.** Inferior rectal nerve — ischiorectal fossa
- C.** Greater vestibular glands — superior perineal pouch
- D.** Sphincter urethra — deep perineal pouch

Lecture 3-4

Perineum

Q1: Choose the **WRONG MATCH** of the following combinations:

A. deep nerve of penis - - - pudendal nerve

B. inferior rectal nerve - - - ischiorectal fossa

C. greater vestibular glands - - - superficial perineal pouch

D. sphincter urethra - - - deep perineal pouch

Q2: Regarding the ischiorectal fossa, choose the **WRONG** statement

A. Anterior wall is formed by posterior border of the perineal membrane

B. It contains posterior scrotal nerve

C. Apex is formed by origin of levator ani from the lateral pelvic wall

D. Posterior wall is formed by sacrotuberous ligament and gluteus maximus muscle

E. Pudendal canal is located on its medial wall

Q3: The apex of ischiorectal fossa is formed by the origin of?

- A.** Levator ani
- B.** Obturator internus
- C.** Piriformis
- D.** Coccygeus

Q4: A male patient Fell on metal beam which leads to a rupture of the penile urethra, the urine could be found in following areas EXCEPT:

- A.** Deep to Scarpa's fascia
- B.** Superficial perineal pouch
- C.** Loose connective tissue of the scrotum
- D.** Deep perineal pouch
- E.** Around the penis

Q5: Which of the following is a wrong combination?

- A.** Root of penis - superficial perineal pouch
- B.** Internal pudendal artery – superficial perineal pouch
- C.** greater vestibular gland - deep perineal pouch
- D.** Perineal nerve - deep perineal pouch

Q6: The pouch which is floored by perineal membrane is__ and it contains __

- A.** Ischiorectal fossa, Scrotal nerves
- B.** Superficial perineal pouch, Ischiocavernosus muscles
- C.** Deep perineal pouch, Bulbourethral glands
- D.** Deep perineal pouch, Deep artery of clitoris
- E.** Superficial perineal pouch, Greater vestibular glands.

Q7: The pudendal nerve is related to.....inside the ischiorectal fossa

- A.** Skin on either side of the anal orifice
- B.** Puborectalis muscle
- C.** External anal sphincter
- D.** Lower part of obturator internus muscle and obturator fascia
- E.** Iliolumbar ligament

Q8: A male patient has a rupture membranous urethra due to faulty catheterization, the urine will be found in:

- A.** Superficial perineal pouch
- B.** Around the scrotum
- C.** Deep to fascia lata
- D.** Deep perineal pouch
- E.** Deep to Scarpa's fascia

Q9: After extravasation of urine due to traumatic tear of penial bulb, urine may accumulate in all of the following sites except:

- A.** ischiorectal fossa
- B.** body of the penis
- C.** anterior side of the scrotum
- D.** lateral side of the scrotum
- E.** anterior abdominal wall

Q10: A child with ruptured penile urethra, urine extravasation won't reach:

- A.** Loose connective tissue of the scrotum
- B.** Thigh
- C.** Around the penis
- D.** Anterior abdominal wall

Q11: The muscle that eject last drops of urine during micturition is supplied by?

- A.** Scrotal nerve
- B.** Dorsal nerve of penis
- C.** Perineal nerve
- D.** Pelvic splanchnic nerve
- E.** Inferior hypogastric plexus

Q12: The superficial perineal pouch is superior to the perineal membrane

A. True

B. False

Q13: rupture for one of the following can lead to urine escape to deep perineal pouch

A. membranous urethra

B. spongy urethra

C. Prostatic urethra

D. Pre prostatic urethra

Q14: one of the following muscles help in the ejection of last urine drops in male:

- A.** bulbospongiosus
- B.** ischiocavernosus
- C.** superficial perineal transversus
- D.** deep perineal transversus
- E.** sphincter urethrae

Q15: one of the following pierces the perineal membrane:

- A.** artery of the bulb
- B.** inferior rectal nerves
- C.** Deep artery of the penis
- D.** Dorsal artery of the clitoris
- E.** Pudendal nerve

Q16: Which of the following is a branch of the internal pudendal artery in the deep perineal pouch

- A.** Scrotal artery
- B.** Inferior epigastric artery
- C.** Dorsal artery of penis
- D.** Artery of the bulb

Q17: Which of the following is a content of the superficial perineal pouch:

- A.** Pudendal nerve
- B.** Ischiocavernosus muscles
- C.** Deep transverse perineal muscles
- D.** Levator ani muscles

Q18: True about internal pudendal artery?

Answer: found in lateral wall of ischiorectal fossa

Q19: Wrong combination?

Answer: greater vestibular gland - deep perineal pouch

Lecture 5

Anatomy of the breast

Q1: The area at 5 o'clock of the left breast is drained by:

A. Pectoral (anterior) group of axillary lymph nodes

B. Apical group of axillary lymph nodes

C. Internal mammary (parasternal) lymph nodes

D. Lymphatics of the rectus sheath, linea alba and subdiaphragmatic lymphatics

Q2: The lower lateral part of breast lies superficial to:

- A.** Pectoralis major
- B.** Pectoralis minor
- C.** Serratus anterior
- D.** External oblique muscle

Q3: Tubercles of Montgomery are found in

- A.** Nipple
- B.** Areola
- C.** Fatty stroma

Q4: Which of the following is wrong about the breast?

- A.** The lateral part of the breast is supplied by branches of axillary artery only
- B.** Nipples lie in 4th intercostal space
- C.** Its carcinoma spreads to anterior and posterior axillary lymph nodes but not to central and lateral groups
- D.** Axillary veins are an important station in breast venous drainage

Q5: Choose the **WRONG** statement from the following:

- A.** The upper lateral part of the breast is supplied by pectoral branch of thoracoacromial artery
- B.** Retraction of the nipple in cancer breast is due to extension of the growth along the lactiferous ducts
- C.** Tubercles of Montgomery is sebaceous gland in the areola which enlarged during pregnancy and lactation
- D.** Puckering of the skin in cancer breast is due to invasion of ligament of Cooper
- E.** Lymphatics from the medial part of the breast is drained by apical group of axillary lymph nodes

Q6: The area at 7 o'clock of the right breast is drained by.....Lymph nodes:

- A.** Right parasternal
- B.** Left parasternal
- C.** Anterior group of axillary
- D.** Sub diaphragmatic
- E.** Apical group of axillary

Q7: all of the following features associated with breast carcinoma is true except:

- A.** puckering of the skin is due to invasion of ligament of cooper
- B.** retraction of the nipple is due to invasion of lactiferous tubules
- C.** Superior part of the breast is drained by the parasternal lymph nodes

Q8: the 2 o'clock of right breast drain to:

- A.** parasternal lymph nodes
- B.** Apical
- C.** Anterior group of axillary
- D.** Sub diaphragmatic

Q9: The lateral lower part of the breast is supplied mainly by:

- A.** Lateral thoracic artery
- B.** internal mammary artery
- C.** Anterior intercostal arteries
- D.** Pectoral branch of the thoraco acromial artery

Q10: The lower lateral part of breast lies superficial to:

- A.** Pectoralis minor
- B.** Pectoralis major
- C.** Serratus anterior
- D.** External oblique muscle

Q11: Lactating gland ,the acini appears interrupted with vacuoles of dissolved fat

A. True

B. False

Q12: The medial two-thirds of the base of the breast lies on:

- A.** Pectoralis minor
- B.** Pectoralis major
- C.** Serratus anterior
- D.** External oblique muscle

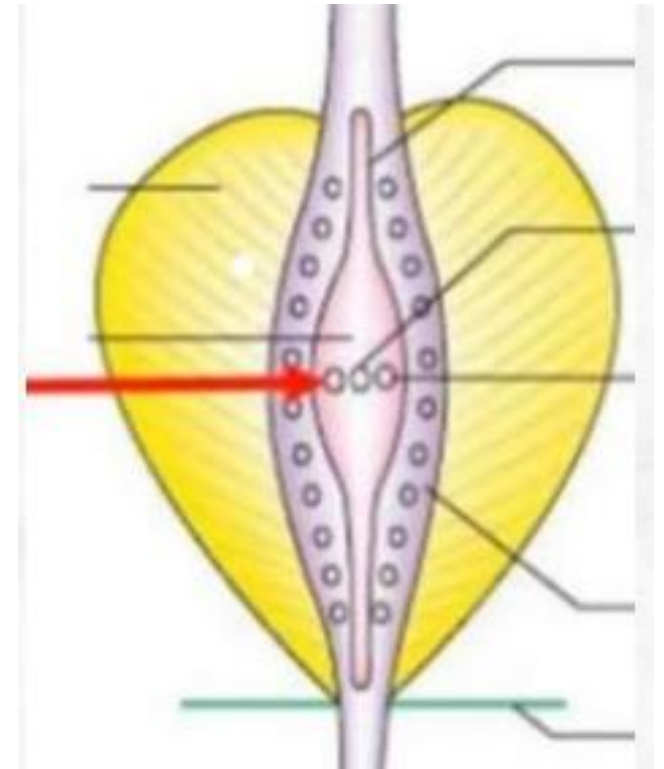
Q13: Choose the **WRONG** statement from the following:

- A.** The upper lateral part of the breast is supplied by pectoral branch of thoracoacromial artery
- B.** Retraction of breast skin is caused by lactiferous duct
- C.** Tubercles of Montgomery is sebaceous gland in the areola which enlarged during pregnancy and lactation
- D.** Puckering of the skin in cancer breast is due to invasion of ligament of Cooper

Lab Material

Q1: The pointed structure is developed from:

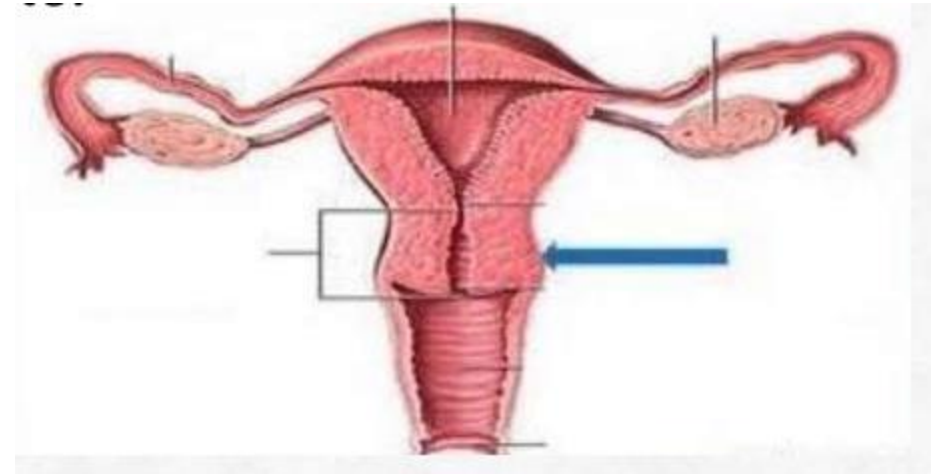
- A.** Mesonephric tubules.
- B.** Pronephric ducts.
- C.** Mesonephric ducts.
- D.** Pronephric tubule.
- E.** Paramesonephric ducts.



Answer: C

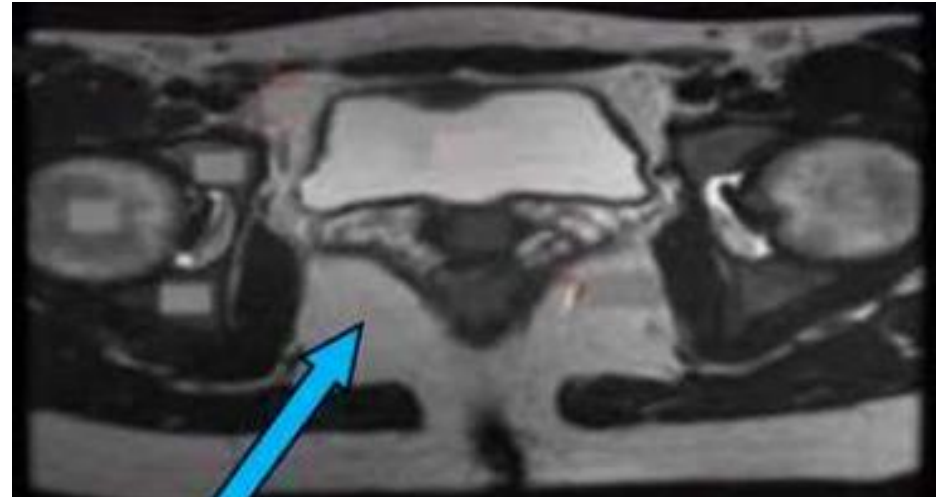
Q2: The pointed structure (blue arrow) is related to:

- A.** Sigmoid colon.
- B.** Coils of small intestine.
- C.** Urogenital diaphragm.
- D.** Douglas pouch.
- E.** Uterine artery crosses the ureter.



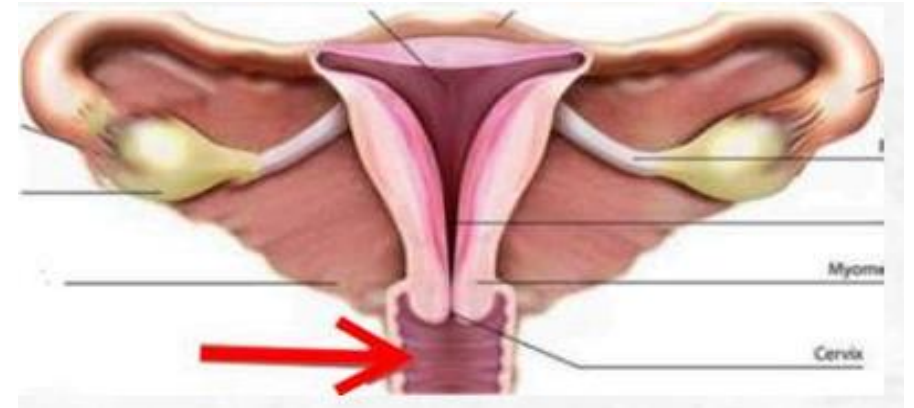
Q3: Which of the following structures passes through the pointed area?

- A.** Artery of bulb
- B.** Bulbospongiosus muscle
- C.** Membranous urethra
- D.** Inferior rectal nerve
- E.** Deep artery of the penis



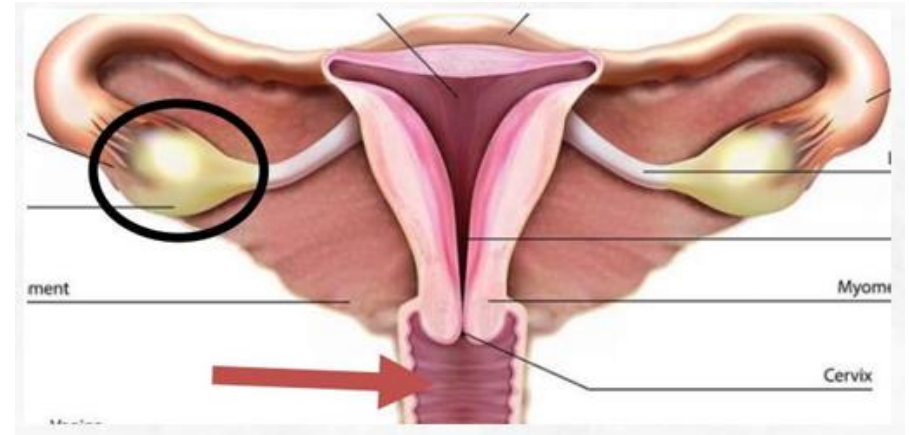
Q4: Regarding the pointed organ...all true about except:

Answer: Posterior wall covered by peritoneum



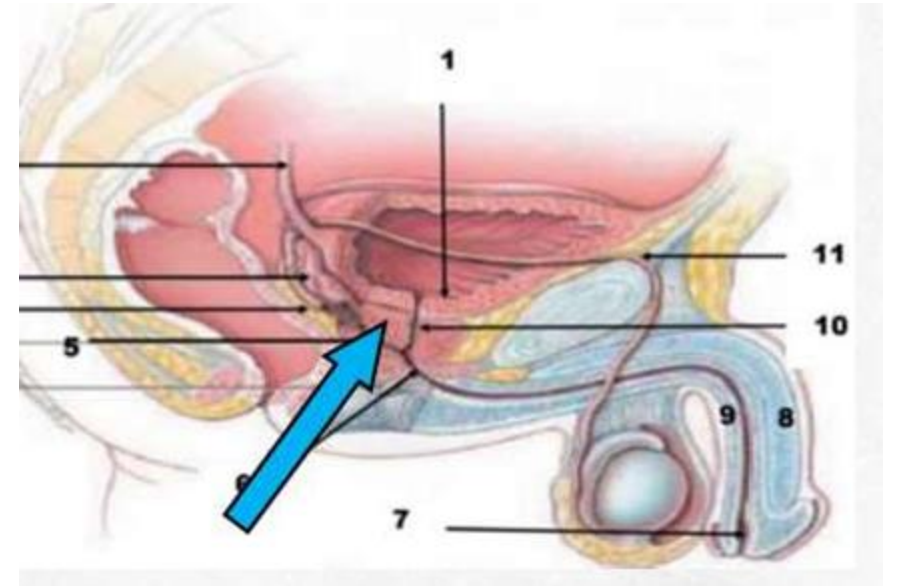
Q5: Which of the following is wrong regarding the red-arrowed structure?

- A.** Perineal body separates it from anal canal
- B.** Its axis makes a right angle with the uterus
- C.** It has both autonomic and somatic innervation



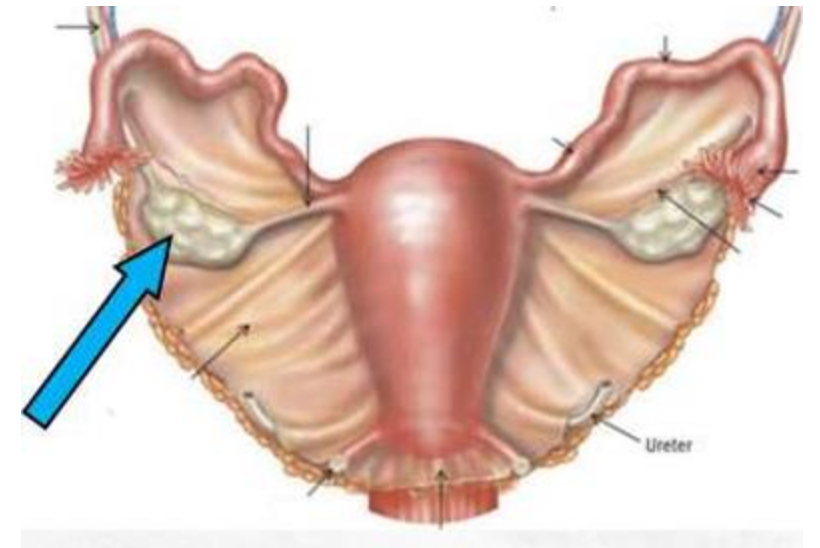
Q6: Regarding the pointed organ ... Which is true?

Answer: Prostate is lying on UG diaphragm



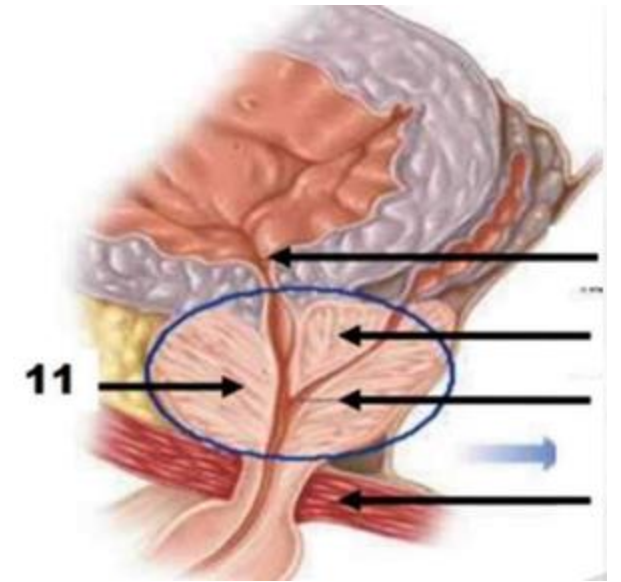
Q7: Regarding the pointed organ ... Which is true?

Answer: Connected to pelvic wall by infundibulopelvic ligament and to broad ligament by mesovarium
(infundibulopelvic = Suspensory ligament)



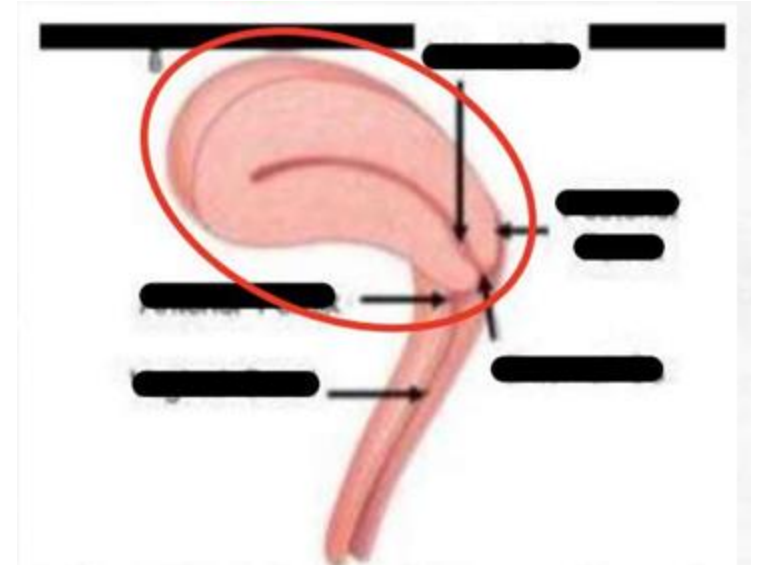
Q8: Which of the following is true regarding structure pointed at with 11?

- A.** It lies on the urogenital diaphragm
- B.** It has three surfaces
- C.** It cannot be palpated
- D.** It is transversed by membranous urethra



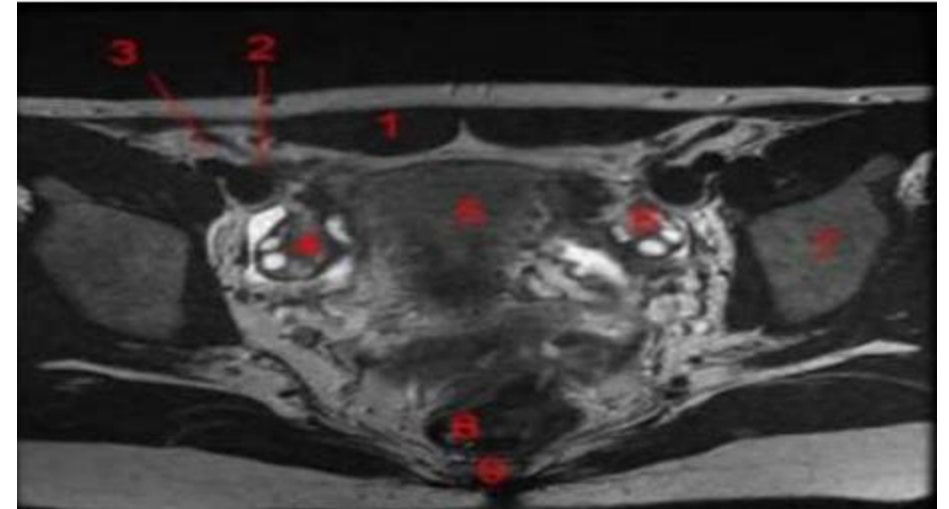
Q9: Which part is covered by peritoneum?

Answer: Fundus



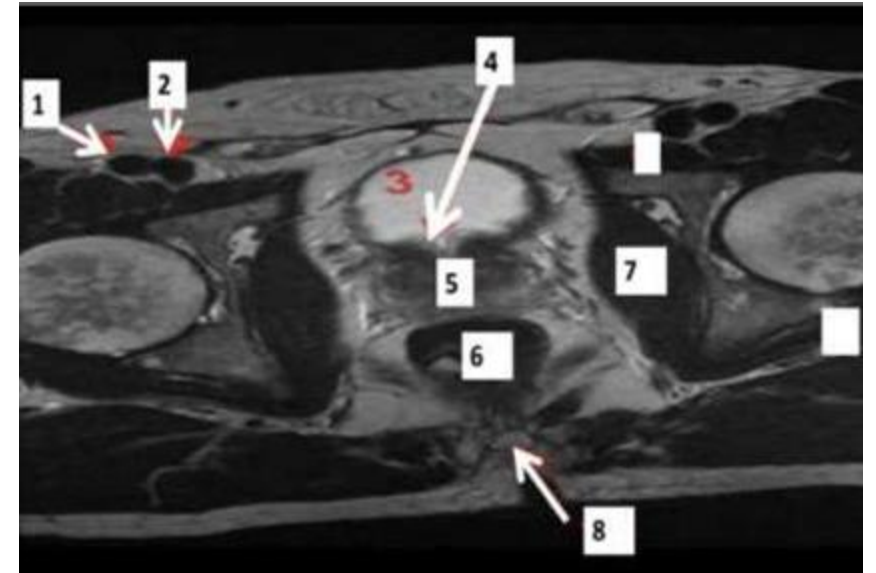
Q10: Structure number 4 lateral border is related to:

- A.** Right obturator nerve
- B.** Left obturator artery
- C.** Ureter
- D.** Right uterine tube
- E.** Left uterine tube



Q11: What is the structure labeled with number 5 called?

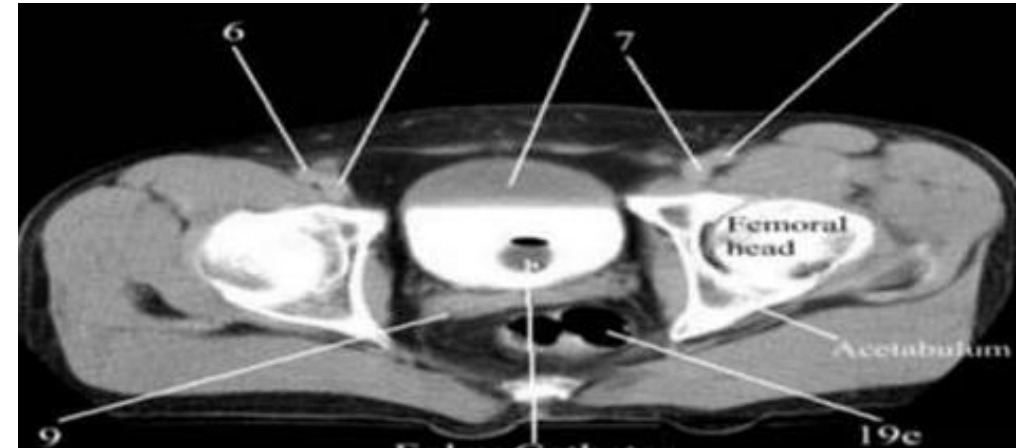
- A.** Urinary bladder
- B.** Seminal Vesicle
- C.** Anal Canal
- D.** Levator ani muscle
- E.** Prostate



Answer: E

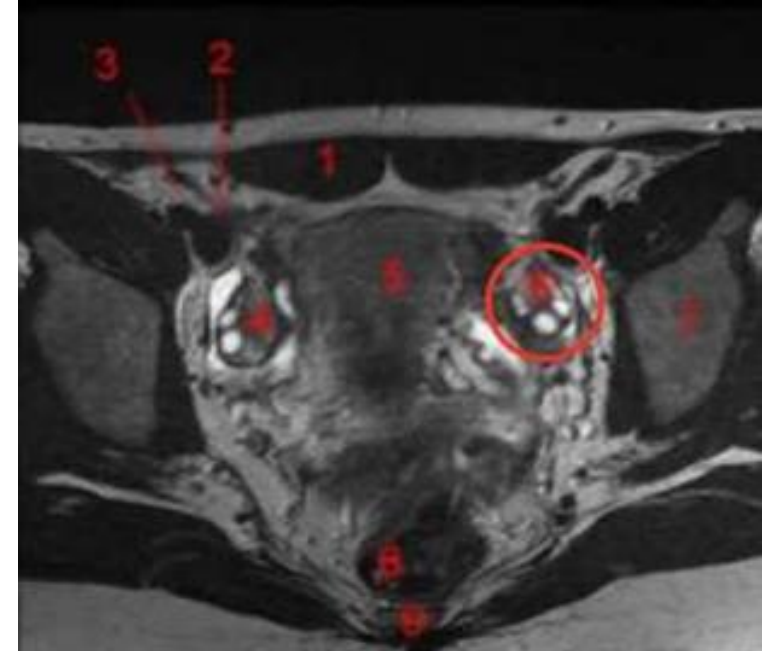
Q12: Number 9 represents:

Answer: Seminal vesicles



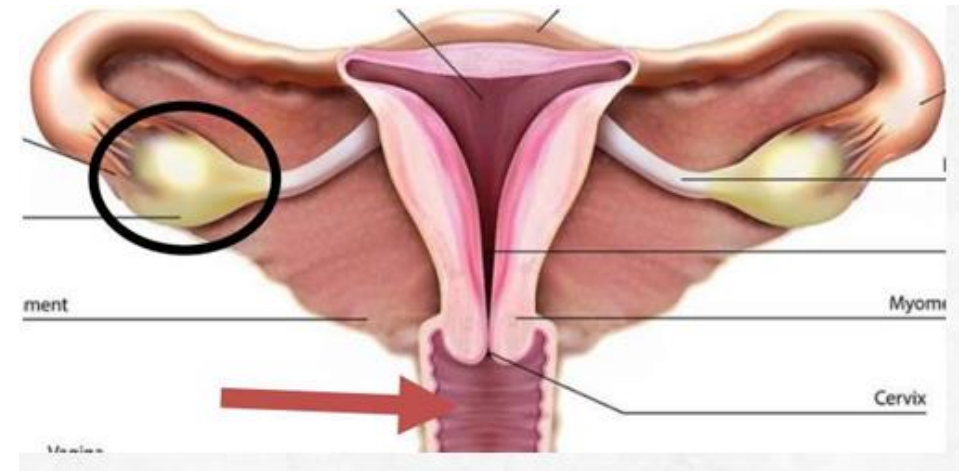
Q13: Pointed structure , it drains into :

Answer: Left renal vein



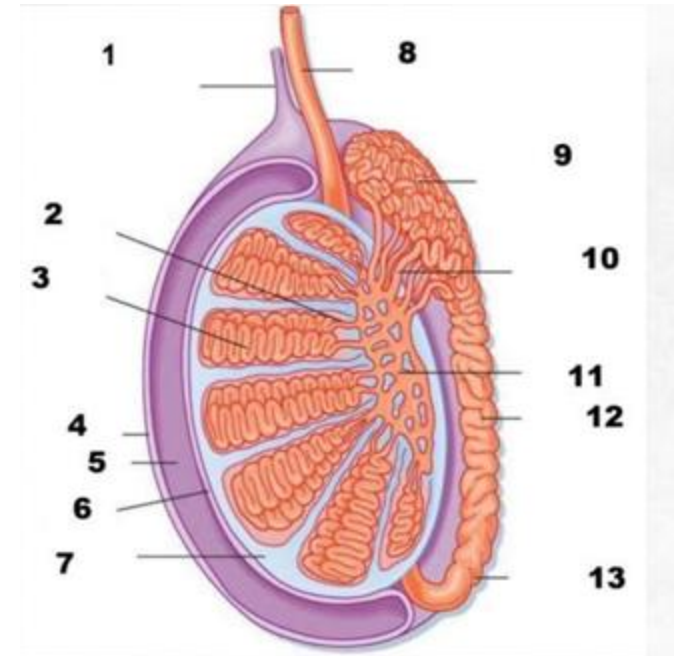
Q14: From the same figure above, which of the following is true regarding the circled structure?

- A.** It is related medially to the obturator nerve
- B.** It is related laterally to the uterine tube
- C.** It is connected to broad ligament by mesovarium
- D.** It is supplied by an artery which is a direct branch from abdominal aorta at level of L3



Q15: The embryonic origin of the structure number 9:

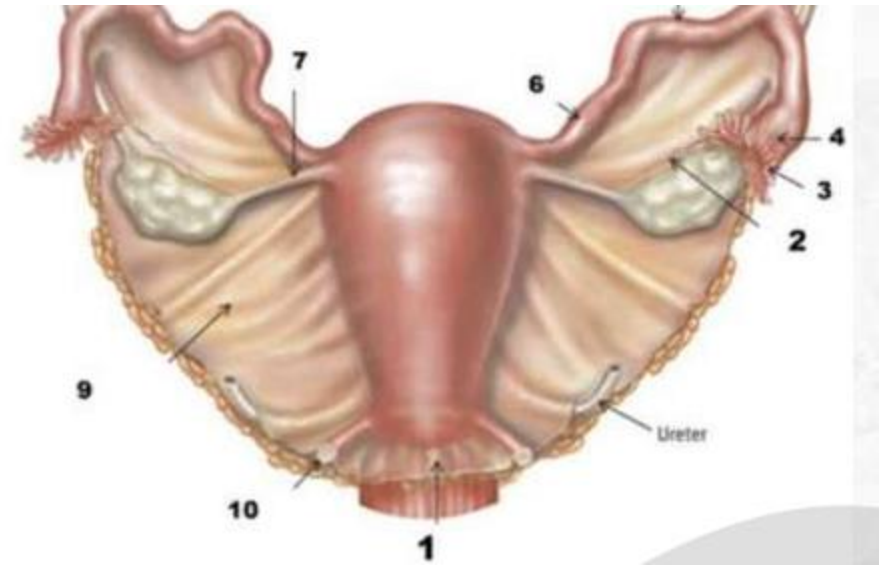
- A.** Mesonephric duct
- B.** Mesonephric tubules
- C.** Vesico-urethral



Answer: B

Q16: Number 7 relation with uterotubal junction:

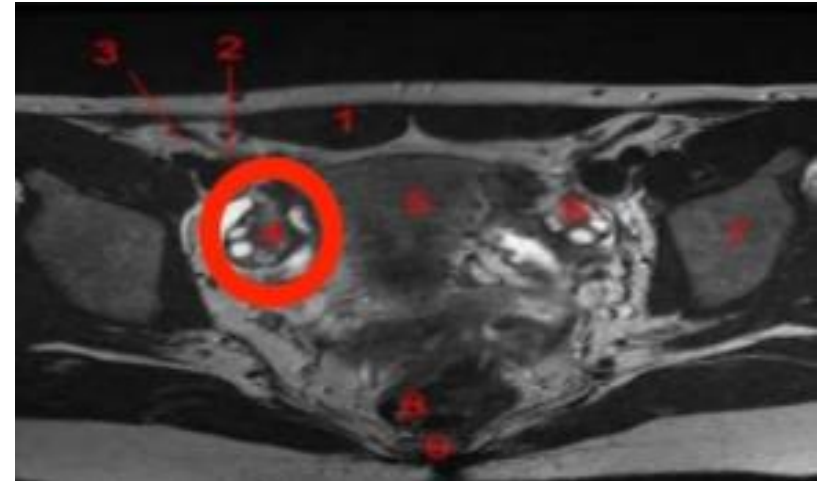
- A.** Posterior superior
- B.** Inferior medial
- C.** Posterior inferior
- D.** Anterior inferior
- E.** Anterior superior



Answer: A

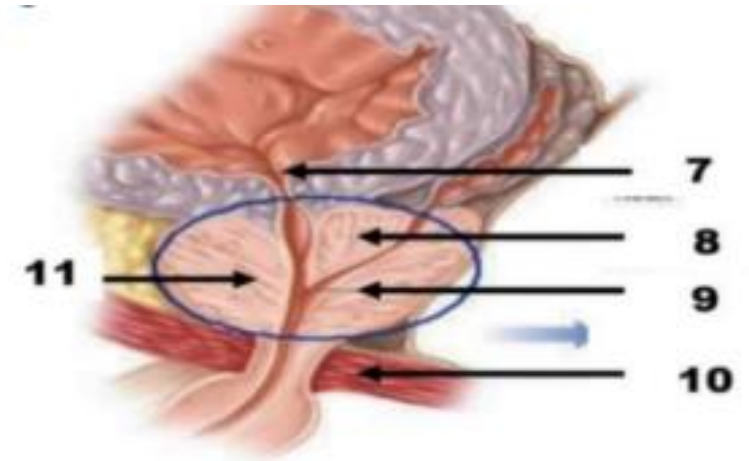
Q17: The circled structure, it drains into:

- A.** Left renal vein
- B.** IVC
- C.** External iliac vein
- D.** Femoral vein



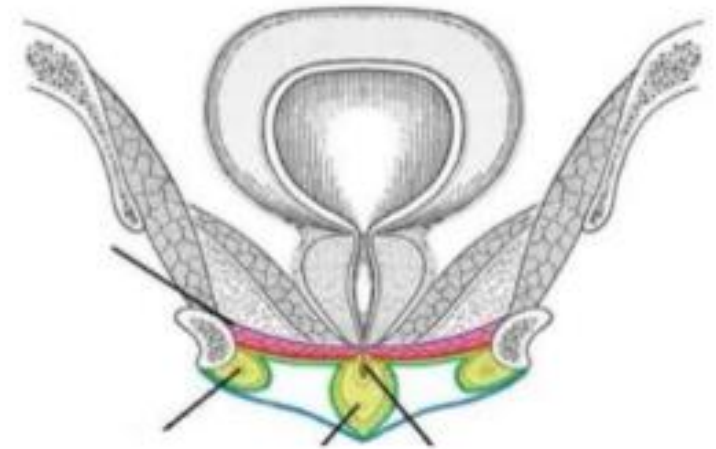
Q18: The structure number 8 is located anterior to which of the following:

- A.** Seminal Vesicle
- B.** Ejaculatory duct
- C.** Urethral crest
- D.** Prostatic sinus



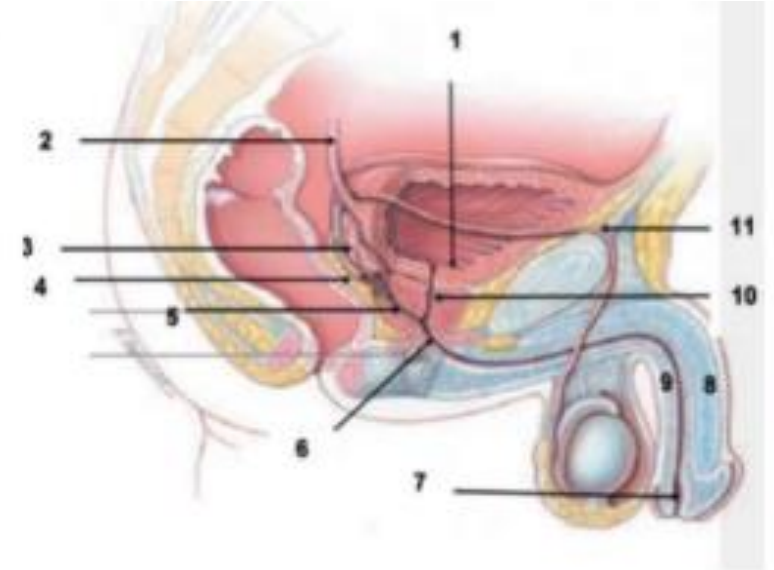
Q19: Which of the following is related to the pink structure:

- A.** Root of penis
- B.** Greater vestibular glands
- C.** Superficial transverse perineal muscles
- D.** Sphincter urethrae



Q20: Which of the following is the embryological origin of the structure 4:

- A.** Urorectal septum
- B.** Coelomic epithelium
- C.** Urogenital sinus
- D.** Mesonephric duct



Scan the QR code or click it for FEEDBACK



Corrections from previous versions:

Versions	Slide # and Place of Error	Before Correction	After Correction
V0 → V1	Slide 25; Q22	A	B
V1 → V2			